



CONTACT INFORMATION

Mining Records Curator
Arizona Geological Survey
416 W. Congress St., Suite 100
Tucson, Arizona 85701
602-771-1601
<http://www.azgs.az.gov>
inquiries@azgs.az.gov

The following file is part of the Doug K. Martin Mining Collection

ACCESS STATEMENT

These digitized collections are accessible for purposes of education and research. We have indicated what we know about copyright and rights of privacy, publicity, or trademark. Due to the nature of archival collections, we are not always able to identify this information. We are eager to hear from any rights owners, so that we may obtain accurate information. Upon request, we will remove material from public view while we address a rights issue.

CONSTRAINTS STATEMENT

The Arizona Geological Survey does not claim to control all rights for all materials in its collection. These rights include, but are not limited to: copyright, privacy rights, and cultural protection rights. The User hereby assumes all responsibility for obtaining any rights to use the material in excess of "fair use."

The Survey makes no intellectual property claims to the products created by individual authors in the manuscript collections, except when the author deeded those rights to the Survey or when those authors were employed by the State of Arizona and created intellectual products as a function of their official duties. The Survey does maintain property rights to the physical and digital representations of the works.

QUALITY STATEMENT

The Arizona Geological Survey is not responsible for the accuracy of the records, information, or opinions that may be contained in the files. The Survey collects, catalogs, and archives data on mineral properties regardless of its views of the veracity or accuracy of those data.

CONCENTRATES

A Concentrated Summary of the Mining Activities in the Southwest

COCHISE

In the Dos Cabezas Mining District, 15 miles east of Wilcox, a number of mining enterprises are under way, including the Central Copper Company, which is making a good form of miners and intends to build a reduction plant, the Gold mine, where a 100-ton concentrating mill is being constructed, the Davies property is operating a small mill; the LeRoy property is now installing oil tanks, preparatory to bringing in development machinery.

It is said a lease has been taken on the old Huerfano Mine located in the Winkelman Mountains. It is the intention of the lessors to work over the large dumps on the property for the high grade silver as well as to mine the vein.

Phelps Dodge Corporation's smelter at Douglas produced 7,931,000 pounds of silver copper in March as follows: 5,355,000 pounds from Copper Queen; 1,786,000 pounds from Moctezuma Copper Company, and 790,000 pounds from custom ore.

The Bernal Leasing Company has resumed operations after having been shut down on account of the railroad strike.

The Leadville Mining Company at Fort Huachuca is reported to be working a crew of 20 men.

The Commonwealth Mining Company is reported to be working 70 men. A cyanide plant is in operation.

The Gray Metals Company has recently been organized in Phoenix for the development of property in the Huachuca Mountains near Hereford. Assays are said to have shown silver, lead, zinc and gold. Work will begin at once on the Soler Mine, known as the Old Winters mine. A small force of men will be put to work until proper machinery and equipment can be installed.

The rumored sale of the property of the Arizona Copper Company, Ltd., has been consummated, according to Mr. Michael, who has returned from New York, the matter having been held over for months for more mature consideration. A report mentioned the Phelps Dodge Corporation as the possible purchaser and the price at £600,000 pounds sterling.

There was an increase of a half million pounds of copper at the Copper Queen smelter during the month of March over February output, while the output at the C. & A. smelter remained at practically the same as for February.

GILA

The Miami Copper Company, Miami, is showing a steady increase in copper output.

The March production totaled 5,011,000 pounds. In March of last year the output was 2,511,110 pounds, and in the same month of 1918 it amounted to 5,174,000 pounds.

The Inspiration Copper Company has leased its holdings in the Miami District the purchase of the Porphyry Consolidated Copper and Barney Copper companies, comprising 567 acres, adjoining the Inspiration mine.

Miami parties have leased the McPherson-Ryan group of claims which will be worked for silver. A 50-foot shaft is being sunk.

Shipments of silver ore are being made to the Selby smelter from the Jumbo Mine near Globe.

The Louis D'Or Mining Company, near Miami, has just completed the building of 3000 feet of 9-foot road for diamond and church drill operations.

The Warrior Copper Company has disposed of most of its holdings to the Inspiration Consolidated Company for \$400,000. This deal includes mill houses, machine shops and other property.

The Porphyry Consolidated Copper Company are preparing to renew churn drill operations.

Much interest is being displayed with regard to the diamond drill work being done by the Superior & Boston to determine if the Great Eastern vein is mineralized in the underlying Pinal schist. Recently this company made a strike of two feet of covellite ore, rich in copper and silver, on the 600-foot level.

GREENLEE

The Shannon Copper Company, which has operated extensively in the Clifton District, according to General Manager Bennie, has turned its attention to oil land leases.

The Duncan Mining & Milling Company has just completed a milling and cyaniding plant at a cost of \$125,000, its capacity being 120 tons a day.

It is reported on good authority that the American Smelting & Refining Company has completed negotiations for the purchase of the Ash Peak Mine near Duncan.

MARICOPA

A company called the Arizona Cave Creek Mines Corporation was recently organized to take over a number of claims in the Cave Creek District, among which are the Norma Girl, the Maricopa, the Pocahontas and a number of others.

The Kay Copper Company's president, George Long, has signed a contract with the Arizona Power Company for electric power. They have also purchased a compressor from the Ingersoll-Rand Company.

MOHAVE

The National group of mines, about six miles west of Pine Springs, is being developed by a small force of men, is the report in Kingman.

To finance its treasury and provide working capital, the Emerald Isle Copper Company, Kingman, has increased its capital stock from 500,000 to 1,500,000. It is said the company will begin development work soon.

It is understood that the Home Pastime and Sabbath Bell mines near Mineral Park, may be soon taken over by a strong company and development work done.

The shaft at the Adams, near Oatman, is being repaired and put in shape to sink another 150 feet.

It is announced that just as soon as the Blossom ledge of the Arizona Ore Reduc-

tion is cut they can make plans for future development.

The Shaft of the I. X. L. mine of the Dudley properties, Kingman, has reached a depth of 250 feet. When the shaft has reached the 300-foot level, crosscuts will be carried into the vein.

The regular annual meeting of the stockholders of the Arizona Western Mines Company was held at Chloride the 3rd of May for the purpose of electing a board of directors and transaction of other business.

It is understood that the Doyle properties in the Aubrey district are to be developed.

The United Eastern at Oatman is reported to be paying close to \$200,000 per month, the shipments of bullion since the first of the year have been larger than that of any other gold mine in the United States.

The Diamond Joe mill, Kingman, has recently shipped six carloads of ore.

Col. Rankin and Mr. Copley of Pittsburg, were in Chloride recently looking over the tunnel project of the Payroll and Marabelle mines. It is said work on the tunnel and mines will start as soon as the necessary arrangements can be made.

The crosscut from the tunnel of the Kingman Consolidated, at Kingman, has encountered good ore, carrying values of 50 to 230 ounces in silver.

The Hackberry Consolidated Silver Mines Company has been incorporated and has taken over the properties of the Hackberry Consolidated and the Senate Silver mines, near Hackberry. The new company expects to have the mines in shape for production within a short time.

A recent report from the Hidden Treasure is to the effect that the drift on No. 3 vein has reached a depth of 65 feet.

The Tuckahoe is working in the drift on the 550 level and the drift is now in about 170 feet.

An excellent strike was reported recently at the Molly-Gibson-Chloride. The ore being rich galena and carries around 40 ounces of silver, making the ore run around \$150 per ton.

The Arizona-Brunswick, Chloride, reports a good vein of ore in the drift on the 250 level. There is about five feet of ore assaying \$24 per ton across the vein.

Superintendent Humphrey is getting matters shaped up for resumption of active operations of the Cyclopic mine. Improvements in the mill with installation of machinery for the mine is in immediate contemplation, is report coming from Kingman.

The Wallapai Mining Company's camp about 50 miles northeast of Seligman, is reported to be opening up copper ore of every variety to be known in the oxidized zones.

Surveyors are at work on the ground plans if the big mill to be built by the Mossback mine, near Kingman. The main shaft of this mine has reached a depth of 700 feet on the incline and on every level vast bodies of ore are reported as having been found.

(Continued to Page 52)

CONCENTRATES

(Continued from Page 43)

The **United Eastern Mining** company and the **Tom Reed** still have the matter of the merger under consideration, is rumored in Oatman.

The **Midway-Moss** at Oatman has installed a new pump and is working three shifts.

Active operations are reported in the **Golden State Mine** at Mineral Park. In cleaning out the old drift on the 150 level an ore body was broken into that gave results of over 400 ounces of silver and \$9 gold. A new shaft will be sunk to the 500 level.

The **Tuckahoe Mine** at Chloride has finished cutting its station on the 550 and started drifting north. The 350 level shows a vein from twelve inches to five feet in width, carrying ruby and spongy native silver in quantities.

The **Chloride Queen** is drifting at 515 feet. The ore cut in running this drift has been excellent.

Drifting is being done on the 80-foot level of the **Home Pasture** mine at Mineral Park. The ore encountered is said to be of excellent grade.

The **Leland-Mitchell** group of mines is to be equipped with new machinery for the purpose of exploring the ground recently opened by the deep working shaft, is announced from Kingman. 64 feet.

The **Highland Mining** company, formerly owned by the **Union Basin Mining** company and the **Middle Golconda Mines** company have installed a large amount of machinery and has a milling plant of 200

tons capacity almost ready to go into commission.

The **Combination Silver Mine** company has purchased machinery for the development of their property on the Hackberry lide and will have it transferred to the property in the near future.

The **Pay Roll Mine** at Chloride, has just been organized under the laws of the state of Delaware with a capitalization of two million fifty cent shares.

Reports from the **Telluride mine** at Oatman, indicate that a strike of great importance has been made on the 430 level.

The **Great Republic** mine in the Cedar Valley district, will make an extensive examination with the view of putting on a campaign to finance the property.

The **Middle Hackberry** company, Kingman, has completed the financing of its treasury, \$50,000 being put up to provide the necessary machinery and carry on active development work for the next six months. It is expected that at an early date the mine will be under operation with three shifts of miners and the shaft is to be equipped with a big gasoline hoist and compressor.

The consolidation of the **Hackberry Consolidated Mining** company and the **Senate Silver Mining** company has been perfected and the deal closed. Work has been discontinued on the **Senate Silver** property and a big development campaign is mapped out so that all work will be done from the new **Hackberry Con.** shaft. The new management plans to discard all the gasoline engines and use the **Semi-Diesel** plant exclusively. All the underground workings will be electrically lighted, electric triplex pumps and an electric hoist will take the place of the gasoline hoist formerly used.

The **United American** at Kingman crosscutting from the 540 level, run both north and south. They are now about 30 feet each way, making about a foot a day in each direction.

The shaft of the **Amalgamated** is 600 feet from which point they will begin crosscutting. It is not known whether the death of **George Babbitt**, who was one of the principal backers of the company will interfere with future plans of the **Amalgamated**.

The **Adams** mine near Oatman are exploring on the 400 in the west drift.

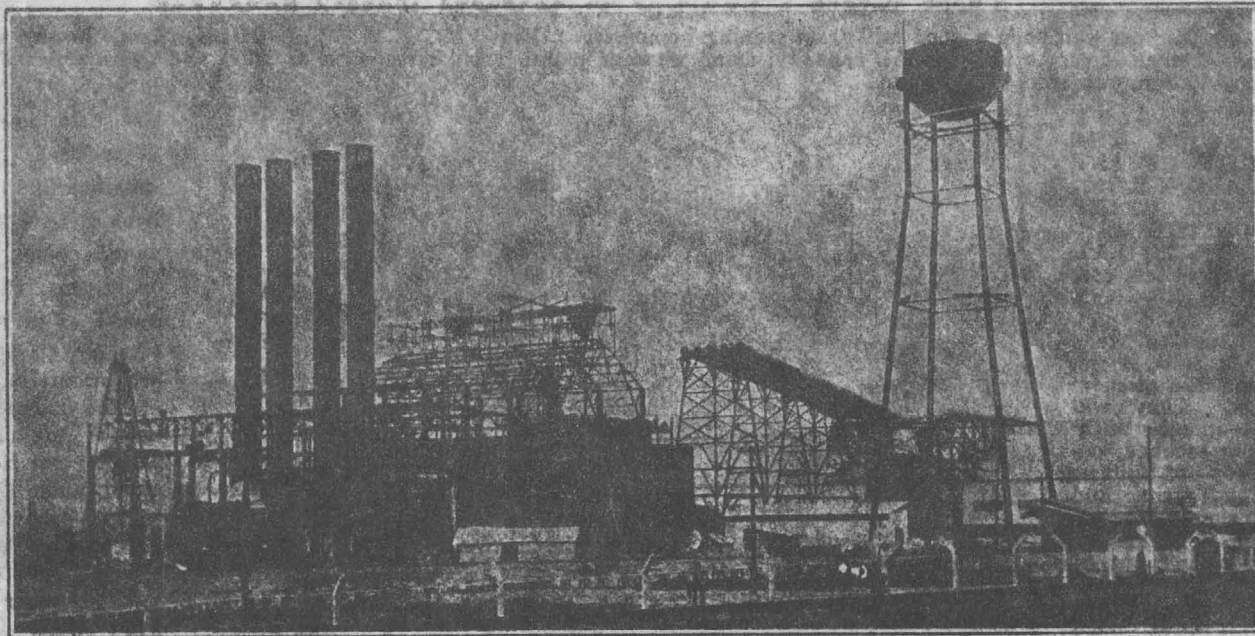
The **Arizona-Buttes Mines** company taken over by the **Kingman Consolidated Mines** company on April 1. A new building house and two bungalow-type houses are under construction. The deep tunnel is electrically lighted as is the pump house and the tunnel camp. A two-stage air compressor will be installed, a tunnel former plant ordered, the present mill the company will be remodeled.

The **Molly Gibson-Chloride** mine is making some quick development work. An engine house has been erected, a blacksmith shop built and equipped and a work done.

The **Gold Dust** mine at Oatman, is reported to have much milling ore in stock. It is said that on the 250 level about 100 feet west of the shaft they have a facies of ore about seven feet wide.

The **Tom Reed** from April 1, 1918 to January 1, 1920, has produced \$8,186 in gold and paid \$2,755,952 in dividends and now pays twenty-four cents per share annually.

Good progress is reported on the shaft of the **Green Quartz** mine at Oatman. They expect to sink to the 400 before attempting to do extensive exploration.



Power Plant and Water Tower—El Paso Milling Co., El Paso, Texas.

EL PASO BRIDGE AND IRON COMPANY

ENGINEERS AND CONTRACTORS



“STRUCTURAL STEEL FOR EVERY PURPOSE”

In transacting business with advertisers please refer to the JOURNAL