



#### CONTACT INFORMATION

Mining Records Curator  
Arizona Geological Survey  
416 W. Congress St., Suite 100  
Tucson, Arizona 85701  
602-771-1601  
<http://www.azgs.az.gov>  
[inquiries@azgs.az.gov](mailto:inquiries@azgs.az.gov)

The following file is part of the Doug K. Martin Mining Collection

#### ACCESS STATEMENT

These digitized collections are accessible for purposes of education and research. We have indicated what we know about copyright and rights of privacy, publicity, or trademark. Due to the nature of archival collections, we are not always able to identify this information. We are eager to hear from any rights owners, so that we may obtain accurate information. Upon request, we will remove material from public view while we address a rights issue.

#### CONSTRAINTS STATEMENT

The Arizona Geological Survey does not claim to control all rights for all materials in its collection. These rights include, but are not limited to: copyright, privacy rights, and cultural protection rights. The User hereby assumes all responsibility for obtaining any rights to use the material in excess of "fair use."

The Survey makes no intellectual property claims to the products created by individual authors in the manuscript collections, except when the author deeded those rights to the Survey or when those authors were employed by the State of Arizona and created intellectual products as a function of their official duties. The Survey does maintain property rights to the physical and digital representations of the works.

#### QUALITY STATEMENT

The Arizona Geological Survey is not responsible for the accuracy of the records, information, or opinions that may be contained in the files. The Survey collects, catalogs, and archives data on mineral properties regardless of its views of the veracity or accuracy of those data.

# CONCENTRATES

A Concentrated Summary of the Mining Activities in the Southwest

## COCHISE

In the Dos Cabezas Mining District, 15 miles east of Wilcox, a number of mining enterprises are under way, including the Central Copper Company, which is working a good form of miners and intends to build a reduction plant, the Gold mine, where a 200-ton concentrating mill is being constructed; the Davies property is operating a small mill; the LeRoy property is now installing oil tanks, preparatory to bringing in development machinery.

It is said a lease has been taken on the old Hearst Mine located in the Winkler Mountains. It is the intention of the lessors to work over the large dumps of the property for the high grade silver as well as to mine the vein.

Phelps Dodge Corporation's smelter at Douglas produced 7,931,000 pounds of silver copper in March as follows: 5,355,000 pounds from Copper Queen; 1,786,000 pounds from Moctezuma Copper Company, and 790,000 pounds from custom ore.

The Boras Leasing Company has resumed operations after having been shut down on account of the railroad strike.

The Leadville Mining Company at Fortland is reported to be working a crew of 20 men.

The Commonwealth Mining Company is reported to be working 70 men. A cyanide plant is in operation.

The Gray Metals Company has recently been organized in Phoenix for the development of property in the Huachuca Mountains near Hereford. Assays are said to have shown silver, lead, zinc and gold.

Work will begin at once on the Soler Mine, known as the Old Winters mine. A small force of men will be put to work until proper machinery and equipment can be installed.

The rumored sale of the property of the Arizona Copper Company, Ltd., has been consummated, according to Mr. Michael, who has returned from New York, the matter having been held over for months for more mature consideration. The report mentioned the Phelps Dodge Corporation as the possible purchaser and the price at 6,000,000 pounds sterling.

There was an increase of a half million pounds of copper at the Copper Queen smelter during the month of March over February output, while the output at the C. & A. smelter remained at practically the same as for February.

## GILA

The Miami Copper Company, Miami, is showing a steady increase in copper output. The March production totaled 5,011,000 pounds. In March of last year the output was 2,811,115 pounds, and in the same month of 1918 it amounted to 5,174,000 pounds.

The Inspiration Copper Company has leased its holdings in the Miami District and the purchase of the Porphyry Consolidated Copper and Barney Copper companies, comprising 567 acres, adjoining the Inspiration mine.

Miami parties have leased the McPherson-Ryan group of claims which will be worked for silver. A 50-foot shaft is being sunk.

Shipments of silver ore are being made to the Selby smelter from the Jumbo Mine near Globe.

The Louis D'Or Mining Company, near Miami, has just completed the building of 3000 feet of 9-foot road for diamond and church drill operations.

The Warrior Copper Company has disposed of most of its holdings to the Inspiration Consolidated Company for \$400,000. This deal includes mill houses, machine shops and other property.

The Porphyry Consolidated Copper Company is preparing to renew churn drill operations.

Much interest is being displayed with regard to the diamond drill work being done by the Superior & Boston to determine if the Great Eastern vein is mineralized in the underlying Pinal schist. Recently this company made a strike of two feet of covellite ore, rich in copper and silver, on the 600-foot level.

## GREENLEE

The Shannon Copper Company, which has operated extensively in the Clifton District, according to General Manager Bennie, has turned its attention to oil land leases.

The Duncan Mining & Milling Company has just completed a milling and cyaniding plant at a cost of \$125,000, its capacity being 120 tons a day.

It is reported on good authority that the American Smelting & Refining Company has completed negotiations for the purchase of the Ash Peak Mine near Duncan.

## MARICOPA

A company called the Arizona Cave Creek Mines Corporation was recently organized to take over a number of claims in the Cave Creek District, among which are the Norman Girl, the Maricopa, the Pocahontas and a number of others.

The Kay Copper Company's president, George Long, has signed a contract with the Arizona Power Company for electric power. They have also purchased a compressor from the Ingersoll-Rand Company.

## MOHAVE

The National group of mines, about six miles west of Pine Springs, is being developed by a small force of men, is the report in Kingman.

To finance its treasury and provide working capital, the Emerald Isle Copper Company, Kingman, has increased its capital stock from 500,000 to 1,500,000. It is said the company will begin development work soon.

It is understood that the Home Pastime and Sabbath Bell mines near Mineral Park, may be soon taken over by a strong company and development work done.

The shaft at the Adams, near Oatman, is being repaired and put in shape to sink another 150 feet.

It is announced that just as soon as the Blossom ledge of the Arizona Ore Reduc-

tion is cut they can make plans for future development.

The Shaft of the I. X. L. mine of the Dudley properties, Kingman, has reached a depth of 250 feet. When the shaft has reached the 300-foot level, crosscuts will be carried into the vein.

The regular annual meeting of the stockholders of the Arizona Western Mines Company was held at Chloride the 3rd of May for the purpose of electing a board of directors and transaction of other business.

It is understood that the Doyle properties in the Aubrey district are to be developed.

The United Eastern at Oatman is reported to be paying close to \$200,000 per month, the shipments of bullion since the first of the year have been larger than that of any other gold mine in the United States.

The Diamond Joe mill, Kingman, has recently shipped six carloads of ore.

Col. Rankin and Mr. Copley of Pittsburgh, were in Chloride recently looking over the tunnel project of the Payroll and Marabelle mines. It is said work on the tunnel and mines will start as soon as the necessary arrangements can be made.

The crosscut from the tunnel of the Kingman Consolidated, at Kingman, has encountered good ore, carrying values of 50 to 230 ounces in silver.

The Hackberry Consolidated Silver Mines Company has been incorporated and has taken over the properties of the Hackberry Consolidated and the Senate Silver mines, near Hackberry. The new company expects to have the mines in shape for production within a short time.

A recent report from the Hidden Treasure is to the effect that the drift on No. 3 vein has reached a depth of 65 feet.

The Tuckahoe is working in the drift on the 550 level and the drift is now in about 170 feet.

An excellent strike was reported recently at the Molly-Gibson-Chloride. The ore being rich galena and carries around 40 ounces of silver, making the ore run around \$150 per ton.

The Arizona-Brunswick, Chloride, reports a good vein of ore in the drift on the 250 level. There is about five feet of ore assaying \$24 per ton across the vein.

Superintendent Humphrey is getting matters shaped up for resumption of active operations of the Cyclopic mine. Improvements in the mill with installation of machinery for the mine is in immediate contemplation, is report coming from Kingman.

The Wallapai Mining Company's camp about 50 miles northeast of Seligman, is reported to be opening up copper ore of every variety to be known in the oxidized zones.

Surveyors are at work on the ground plans if the big mill to be built by the Mossback mine, near Kingman. The main shaft of this mine has reached a depth of 700 feet on the incline and on every level vast bodies of ore are reported as having been found.

(Continued to Page 52)



been made in the recovery of lead and silver values and the lead milling plant now shows a small profit per ton.

The total development work for the quarter was 716 feet, including 600 feet of drifts. Practically all the new work has been through hard limestone without finding any ores of copper.

Operating expense for the quarter was \$89,158.01; milled and lead expense, \$138,793.18, and administrative expense, \$10,041.68. Adding to these three sums the depreciation of equipment of \$18,139.81 leaves from the total income of \$310,626.14, a net income of \$54,303.46.

#### SHANNON COPPER COMPANY

At the special meeting of Shannon Copper stockholders held at Metcalf to act on the sale of the Clifton property to Arizona Copper but 112,449 shares were represented, lacking 38,000 shares of a quorum.

President Amster stated that after the payment of all debts Shannon will have a balance of \$450,000.00 which can be used for development work on the Gleeson and Yaeger properties, which will be retained by the company. He stated that it was either a case of selling the Clifton mine or assessing stockholders in order to raise sufficient money to cover development.

Regarding the Gleeson mine, President Amster stated that it has a large tonnage of ore developed, with sufficient machinery to carry along the work there. Considerable money had been spent on that property during the past few years. The mine was purchased in 1890 for \$80,000.00. It could be sold today, he said, for between \$600,000 and \$800,000.

Experts shortly will examine the Gleeson mine to determine whether it can be worked in conjunction with the Yaeger property. If it proves of too low grade, the Gleeson property may be sold. President Amster stated that if the Gleeson property had a smelter it could produce copper today at a profit. The question is, he continued, whether the Gleeson property has sufficient ore to warrant the erection of a smelter.

## Mohave County News

#### SUMMARY OF OATMAN ACTIVITIES

The mining situation at Oatman on December first is more interesting than it has been at any time since the discovery of the Big Jim just about four years ago. The reason for this is plain. There are several properties now at work that have a good chance to burst into a body of ore any day, just as good a chance as the Big Jim had.

A few of the activities are as follows:

The United Eastern is operating at full capacity. In fact, there is greater tonnage going through the mill than ever, and the values compare favorably with some of the prosperous months in the past. The labor situation at the Eastern is entirely satisfactory.

The Tom Reed mill is putting through their regular tonnage. The Reed has just cut a station on the 600 in the Bald Eagle claim. A 40-foot crosscut will take them to the ledge. This is at a point where the

ore ran \$90 to \$100 per ton on the 500. They will also resume work on the Red Cloud in about ten days.

The Telluride is working its full force from the new shaft, crosscutting north and south, two shifts in each face. In the north crosscut on the 350 they found a small vein of rich ore. It is only 15 inches wide, but it runs \$37.50 to the ton. The men are exploring this vein, hoping it will widen out.

The United American is crosscutting to the north on the 325. They have about 50 feet more to go before encountering the ledge which is traced on the surface. What value it carries is the big question.

The Oatman United is steadily at work exploring on the 600. What they hope to find is a continuation of the Big Jim vein. The next sixty days should tell them all they want to know on that level.

The Adams is drifting both ways on the 400, two crews working both faces at the same time. They have brought in some rock that ran \$15 to \$18 a ton, which shows they have a good chance to open a real ore body.

The Highland Chief is at work extending the Wrigley Tunnel to a point where they expect to intercept the big Highland Chief ledge. This ledge is about the biggest outcropping in the district.

The Green Quartz company are getting ready to start new development. The work is in charge of Mr. Harpending, who has interested some Texas oil men to back the operations. Some real high grade has been found in this ground.

The Midway-Moss intends to let their work by contract. This is the first Oatman property that was ever listed on the Boston curb. They are going to put the shaft to 600 and do 1000 feet of lateral work.

Dr. Etienne A. Ritter, noted Colorado mining engineer, recently made an extended examination of the Arizona Mossback mine at Oatman, and expressed himself as highly pleased with the prospect of a big mine. Will H. Holcomb, manager of this property, has been in Chicago during the past month investigating plans and equipment for the mill which it is proposed to build, a \$400,000 bond issue having been already voted to provide for the same.

Charles Prochnow of Flagstaff, a large owner in the Oatman Amalgamated Mining company, on a recent visit to the property stated that the mine is soon to be operated in a large way. The superintendent has built a nice residence at the mines and is fitting up the property for a long campaign. The Amalgamated lies to the west of Gold Road and the north of Oatman, where the Gold Road and Tom Reed lodes are believed to converge. Some good ore has been opened in the former works, the shaft having been carried to a depth of 500 feet. It will be carried still deeper and the main veins of the group opened through lateral work from the deep level.

The above summary is pretty close to the facts of what the mines in the Oatman district are doing at the present time. It will be noticed there are a good many properties at work, and there are just as many more that should be at work. There are several magnificent prospects in the Oatman district that have fine plants going to rust and waste.

#### CHLORIDE QUEEN

"The Chloride Queen," according to Manager Rhea, "is keeping up its usual pace of development and work will continue in the drift that is reaching out under the apex of the mountain. This objective point will soon be reached and further plans of the company will then be divulged. Good ore has been followed practically the entire length of the drift but whether the company will begin stoping or commence sinking to a greater depth is yet to be decided. It is possible that ore will be taken out on the 200-foot on a small scale and the development proceed in the sinking deeper of the shaft. It has been proven lately in the district that the good ore lies deep and the mistake has been that sinking has been stopped too quickly. Depth makes the good mines in this district and we hope to see the Chloride Queen go down to the 500-foot level at least."

#### PROGRAM FOR HACKBERRY CON

Arrangements are completed for the further financing of the Hackberry Consolidated Silver mines near Kingman. James Murray coming from Butte, Montana, and G. S. Holmes and wife coming from Los Angeles completed the arrangements. William Neagle, superintendent of the property and a large owner in it, also took part in the conference. The mine is now to be developed to an extent that will enable the operation of the mill on a three-shift a day basis. The new shaft, which was agreed upon as a necessity, some time ago, will now be put through to the surface from the 800 level and will be used as a main development shaft, the other shaft being used for the extraction of ore.

The Hackberry mine is now sending out a considerable tonnage of high grade ore from the 400 level to the smelter. This ore carries above \$200 per ton and the ore streak is very large.

#### DEAN MINE

H. S. Stowe of Kingman, advises that St. Louis parties have taken over the Dean mine. Capt. Tom L. Gibson is to have charge of operation, and he has begun the installation of a milling plant on the property to treat the 15,000 or 20,000 tons of ore that is now ready for the mill. Oil flotation will be used. Aside from the large tonnage of ore broken, there is splendid ore showing in both faces of the 150 and 280 drifts.

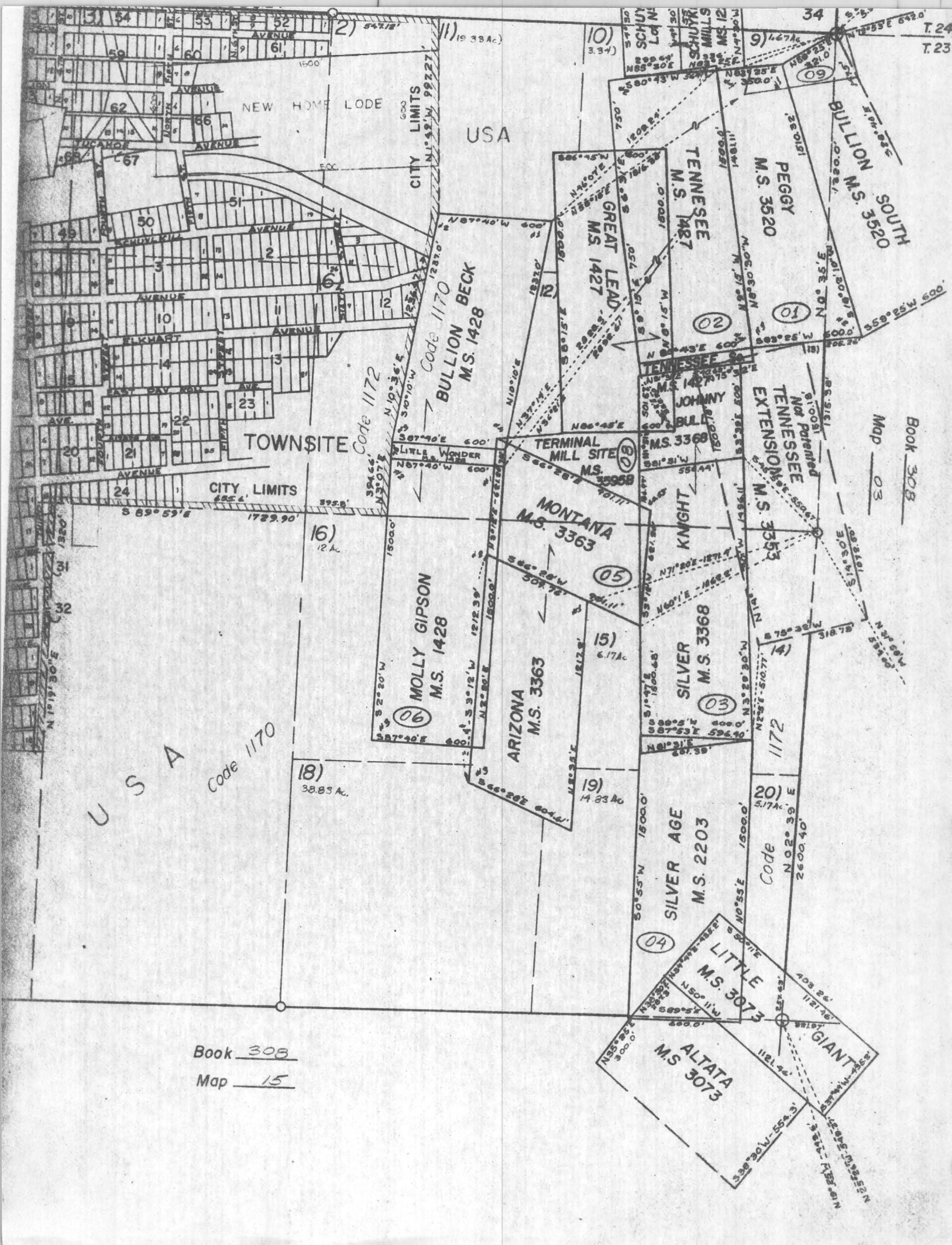
The Dean mine is situated about 15 miles east of Kingman under the high peaks, known as Dean Peak.

The road to the Dean mine has been completed and cars are now running to the mouth of the tunnel with equipment for the mine and mill.

#### MOLLY GIBSON-CHLORIDE

The Molly Gibson-Chloride, Mohave County, will soon be in shape to go to work in the shaft. Lumber for the gallows frame has been delivered on the ground and the erection of same is in progress. The engine and compressor are now in place on concrete foundations, the engine and tool house all completed and upon completion of gallows frame everything will be in readiness to start sinking. Manager Ferguson intends sinking to the 200-foot level before starting any drifts or crosscuts.





Book 308

Map 15

Book 308  
Map 03