



CONTACT INFORMATION

Mining Records Curator
Arizona Geological Survey
416 W. Congress St., Suite 100
Tucson, Arizona 85701
602-771-1601
<http://www.azgs.az.gov>
inquiries@azgs.az.gov

The following file is part of the Doug K. Martin Mining Collection

ACCESS STATEMENT

These digitized collections are accessible for purposes of education and research. We have indicated what we know about copyright and rights of privacy, publicity, or trademark. Due to the nature of archival collections, we are not always able to identify this information. We are eager to hear from any rights owners, so that we may obtain accurate information. Upon request, we will remove material from public view while we address a rights issue.

CONSTRAINTS STATEMENT

The Arizona Geological Survey does not claim to control all rights for all materials in its collection. These rights include, but are not limited to: copyright, privacy rights, and cultural protection rights. The User hereby assumes all responsibility for obtaining any rights to use the material in excess of "fair use."

The Survey makes no intellectual property claims to the products created by individual authors in the manuscript collections, except when the author deeded those rights to the Survey or when those authors were employed by the State of Arizona and created intellectual products as a function of their official duties. The Survey does maintain property rights to the physical and digital representations of the works.

QUALITY STATEMENT

The Arizona Geological Survey is not responsible for the accuracy of the records, information, or opinions that may be contained in the files. The Survey collects, catalogs, and archives data on mineral properties regardless of its views of the veracity or accuracy of those data.

PACIFIC
REGIONAL
OPERATIONS, INC.

P.O. Box 716 • Scottsdale, Arizona 85252 • (602) 994-3147
June 11, 1981

Ms. Hazel C. Gentry
5001 Ridge Avenue #278
Las Vegas, Nevada

Dear Ms. Gentry:

Pacific Regional Operations, Inc., would like to conduct a preliminary geological evaluation of your mining property in the Wallapai District, Mohave County, Arizona.


If this proposal is agreeable to you, please so indicate by signing the enclosed Affidavit of Ingress and Egress which enables our geological staff to enter the property for the preliminary evaluation. No further action will be initiated by Pacific Regional Operations, Inc., until we have received the executed Affidavit of Ingress and Egress.

If at the conclusion of our preliminary evaluation, we determine the possibility that commercial quantities of ore could be found on your property as a result of future intensified exploration, we may be interested in purchasing or leasing the property.

At that time, we would advise you of our intent to proceed, and could offer to purchase the property for as much as \$1,250.00 per acre or leasing the property for a period of three years. Rental payments on the lease basis would be \$50 per acre for the first year, \$200 per acre for the second year and \$500 per acre for the third year. The lease would also provide for a landowner royalty on all produced leased substances.

Should you have any questions or comments, please call collect or write to the above address.

Sincerely,

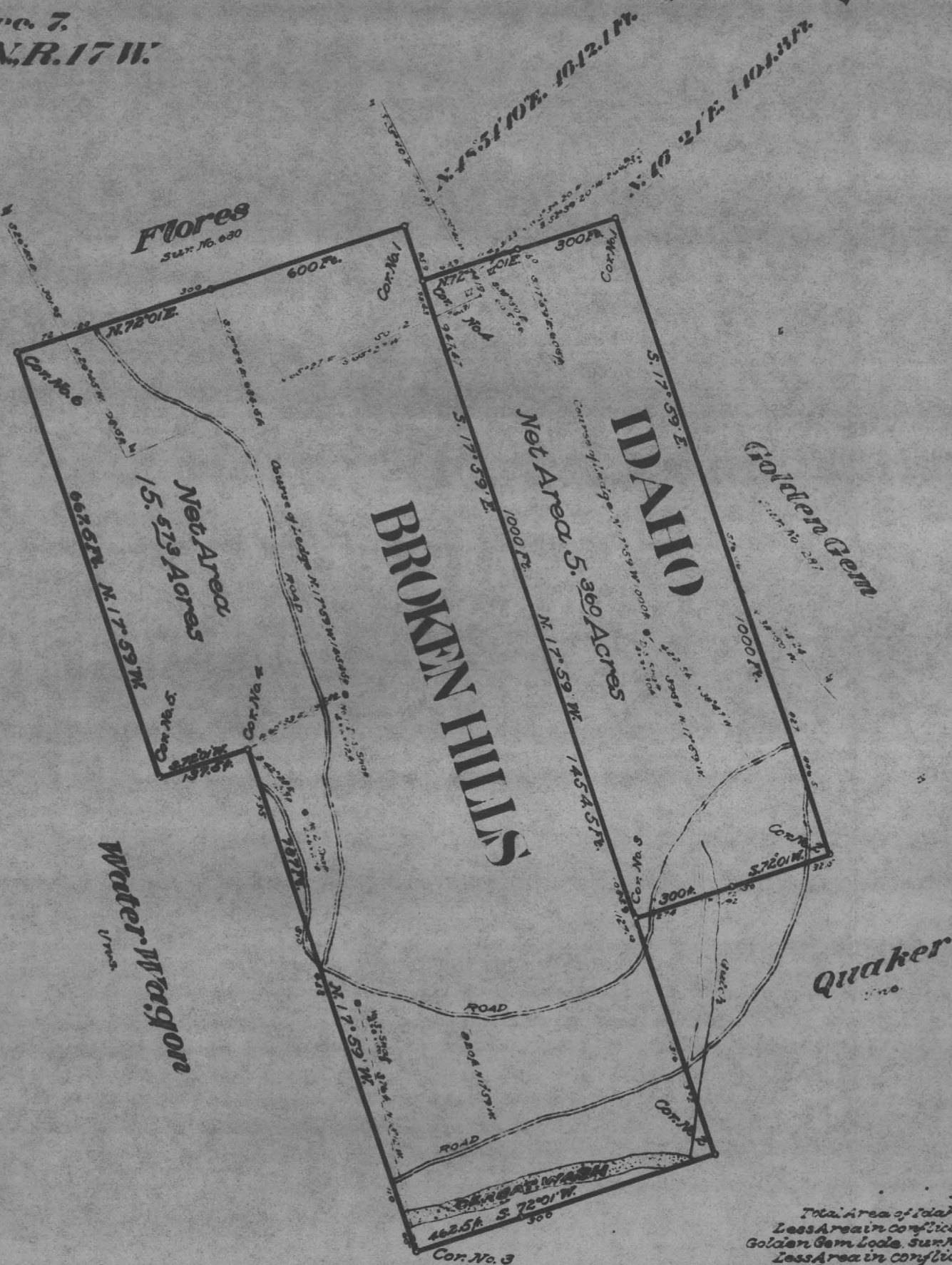


William C. Vanderwall
Geologist

lpk

Enclosure

Sec. 7
T. 22 N. R. 17 W.



Areas		
Total Area of Idaho Lode	6.886	Acres
Less Area in conflict with Golden Gem Lode, Sur. No. 1287	1.446	"
Less Area in conflict with Flores Lode, Sur. No. 630	.380	.526
Net Area of Idaho Lode		5.360
Total " " Broken Hills Lode	7.550	"
Less Area in conflict with Flores Lode, Sur. No. 630	1.977	"
Net Area of Broken Hills Lode		15.573

Unsubstantiated Idaho, Jan. 2, 1871.
Broken Hills " 1, 1903.
Mineral Survey No. 2100

Arizona Land District.

PLAT OF THE CLAIM OF Edward F. Thompson KNOWN AS THE IDAHO AND BROKEN HILLS

In Wallapai Mining District.

Mohave County, Arizona

Containing an Area of 20.923 Acres.

Scale of 200 feet to the inch.

Variation 15° 45' 16" 20" E.

STARTED Sept. 19-21, 1902 BY

Peter McCordell

U.S. Deputy Mineral Surveyor.

The Original Field Notes of the Survey of the Mining Claim of
Edward F. Thompson
known as the

IDAHO AND BROKEN HILLS

from which this plat has been made under my direction, have been examined and approved, and are on file in this office, and I hereby certify that they furnish such an accurate description of said Mining Claim as will, if incorporated into a patent, serve fully to identify the premises, and that such reference is made therein to natural objects or permanent monuments as will perpetuate and fix the locus thereof.

I further certify that Five Hundred Dollars worth of labor has been expended or improvements made upon said Mining Claim by claimant or his grantors, and that said improvements consist of

45 holes value \$2275.

that the location of said improvements is correctly shown upon this plat, and that no portion of said labor or improvements has been included in the estimate of expenditures upon any other claim.

And I further certify that this is a correct plat of said Mining Claim made in conformity with said original field notes of the survey thereof, and the same is hereby approved.

U.S. Surveyor General's Office. *Frank Schaller*

U.S. Surveyor General for

Jan. 3, 1903. ARIZONA

1-26-1911
178293
06563