



CONTACT INFORMATION
Mining Records Curator
Arizona Geological Survey
3550 N. Central Ave, 2nd floor
Phoenix, AZ, 85012
602-771-1601
<http://www.azgs.az.gov>
inquiries@azgs.az.gov

The following file is part of the G. M. Colvocoresses Mining Collection

ACCESS STATEMENT

These digitized collections are accessible for purposes of education and research. We have indicated what we know about copyright and rights of privacy, publicity, or trademark. Due to the nature of archival collections, we are not always able to identify this information. We are eager to hear from any rights owners, so that we may obtain accurate information. Upon request, we will remove material from public view while we address a rights issue.

CONSTRAINTS STATEMENT

The Arizona Geological Survey does not claim to control all rights for all materials in its collection. These rights include, but are not limited to: copyright, privacy rights, and cultural protection rights. The User hereby assumes all responsibility for obtaining any rights to use the material in excess of "fair use."

The Survey makes no intellectual property claims to the products created by individual authors in the manuscript collections, except when the author deeded those rights to the Survey or when those authors were employed by the State of Arizona and created intellectual products as a function of their official duties. The Survey does maintain property rights to the physical and digital representations of the works.

QUALITY STATEMENT

The Arizona Geological Survey is not responsible for the accuracy of the records, information, or opinions that may be contained in the files. The Survey collects, catalogs, and archives data on mineral properties regardless of its views of the veracity or accuracy of those data.

GEORGE M. COLVOCORESSES
MINING AND METALLURGICAL ENGINEER
=====
HUMBOLDT, ARIZONA
1108 Luhrs Tower
Phoenix, Arizona.

Red Bank Place
May 26, 1930.

Mr. John B. Ehrhart,
Phoenix,
Arizona.

REPORT ON WEAVER GULCH GOLD PROPERTY

Dear Sir:

In compliance with your request, I visited this property on the 22nd inst., and made a very Brief examination in order to advise you concerning its probable merit. My examination, as you realize, was of a preliminary nature, and cannot be made the basis for a detailed report, but I think that the information obtained is of considerable importance.

LOCATION, GEOLOGY AND HISTORY

Your claims are located in the southern part of Yavapai County, Arizona, along Weaver Creek, being about seven miles in an air line or twelve miles by fair road distant from the railway at Congress. *They are in Sects 31 & 32 T₁₀ N. R. 4. W.*

The camp on the creek has an elevation of slightly over 3,000 feet above sea level, and the ground rises rapidly to the east, forming the western slopes of the Weaver Mountains, with Rich Hill just to the north. The surface is rough and stony; there are no trees except along the washes and only scant vegetation consisting of cacti and various desert shrubs.

The country is Pre-Cambrian granite and schist, the higher mountains being capped by Tertiary lava. Placer ground in this section comprises a total area of about eight by five miles, principally a sloping mesa composed of boulders, clay and sand formed by the erosion of the mountains and hills.

Gold was first discovered here in the 1860's and for several years there was great mining activity at the vein

mines on Rich Hill and vicinity and at the placers along Weaver and Antelope Creeks. The yield of gold prior to 1883 is said to have amounted to over \$1,000,000 value. Only sporadic mining has been continued since that date and according to the records of the State Bureau of Mines, the reported yield has been only \$75,000 since 1900, and practically negligible since 1914.

The property divides itself into: First - the quartz vein locations; and, Second, the Red Bank placer ground along Weaver Creek.

Two of these quartz veins were visited, the first located about one-half mile north of the creek and 280' above the camp site. At this point a shaft had been sunk to a depth of 80' according to Dan Lucere who accompanied us, and some drifting had been done from the bottom. The shaft was inaccessible, the water rising to within 20' of the collar, so I took a sample of the quartz from the dump which should represent approximately the average of the vein material. The assay showed: Gold .04 oz. per ton (80¢), which shows this ore to be entirely non-commercial, and there is no incentive to further exploration at this point.

The second quartz vein, known as the Honeycomb, is located about one and one-half miles to the east of the camp site and outcropped on the western slope of the mountains, the elevation above the camp I judge to be about 800'. The country is granite and evidence of a fault is apparent, the fissure vein showing a filling of crushed quartz and clay ^{gouge} gangue near the surface, the strike is N 20° W and the dip 45° - N 70° E. The vein appeared to be strong and continuous and possibly might be traced to the working which you indicated as "#312", some distance to the south and beyond toward the Bee Hive Mine. General geological conditions were favorable and the vein should become solid quartz as depth is gained. The width could not be determined from the two shallow pits which have been sunk but is pretty surely in excess of 5'

Two samples were taken, one from the pit known as "Honeycomb #1", which assayed .02 oz. (40¢) gold to the ton; the other from the rock excavated in the second pit known as "Honeycomb #2", which assayed .04 oz. (80¢) gold to the ton. It is evident that this vein is not sufficiently mineralized at least near the surface, to constitute ore, and, considering the location and difficulty of conducting further exploration work, I do not recommend any further development.

RED BANK PLACER

This is located along the banks of Weaver Creek and I am given to understand that the property which you have under option consists of five unpatented placer mining claims of 20 acres each, standing in the name of Dan Lucero, Vincente Lucero, and another brother. These men are said to be American citizens, and the locators and owners of the claims.

The boundaries of these claims as pointed out to me would make the workable limits of the placer approximately 2,000' in length along Weaver Creek, in an east and west direction, 1,000' in width, and the average depth from the surface to bedrock is estimated, from comparatively meager data, at 15'. All of this ground consists of a sedimentary fill between steeply rising hill sides, and is composed principally of boulders and rocks of all sizes and dimensions, cemented together with gravel, sand and clay; the gold occurring in small nuggets and specks. The total content of the placer ground which might be worked on these claims is about one million cubic yards, and a rough estimate of the percentage of boulders to gravel and dirt indicates that the boulders represent approximately 80% of the total yardage.

DEVELOPMENT

Aside from the surface exposure of the entire mesa, extending from Weaver Creek to the point where the mountains rise

sharply, the deposit is cut through to bedrock near its south side by the creek and much of the north bank stands up quite sheer and permits easy inspection and sampling. In this bank a number of short tunnels have been driven and one comparatively long tunnel near the camp has been run, as per sketch, attached to the report, which is based on a rough survey with a Brunton Transit. On this sketch the locations of samples taken are noted.

QUALITY OF MATERIAL

To accurately determine the quantity and quality of the placer ground would involve a very heavy expenditure for the sinking of a number of shafts to bedrock, sampling and assaying all the material excavated and measuring the relative percentage of rock and dirt. A preliminary estimate was made in the following manner: A number of pans of dirt were picked up at various points on the surface of the mesa and dry-panned by Dan Lucero, who was exceptionally skillful at this kind of work. These pans averaged about 15 lbs. apiece and the specks and colors I judged by the eye to run about 3¢ per pan. Along the bed of the creek and in the banks several other samples were panned which gave somewhat erratic results, but appeared to average about the same as the samples taken from the main tunnel. In the tunnel itself five samples were taken by picking down the cementing material between the boulders at points varying from 2' to 5' above the bedrock. These pans were carefully washed and the gold obtained from four of them aggregated 380 milligrams, derived from about 55 lbs. of dirt. The specks of gold were all comparatively coarse and showed evidence of considerable travel and the recovery by panning was probably about what might be expected from any other form of concentration. The fineness of the gold in Weaver Gulch, as given by the U. S. G. S. is 910, and, using the mean value of the surface samples and those obtained from the tunnel and assuming that the dirt susceptible to panning represented about 20% of the total cubic content of the ground, these tests indicated

that each yard of your placer ground, boulders and rocks included, contains slightly over \$2.00 value in gold. The total value of the gold which might be recovered from this placer might, therefore, be figured at approximately \$2,000,000, but no substantial expenditure of money should be based on this figure, nor any approach to it until further exploration and sampling and testing permits its confirmation, or otherwise, on the basis of far more complete data than is available at present. It is probable that some gold is also associated with iron oxide and with small quantities of sulphide, which were noted from time to time, and this would not be recovered by panning or in sluices, but the quantity appears too small to figure since its recovery would involve complicated methods of procedure that would not appear justified by the anticipated returns.

METHODS OF MINING

In considering the possibility of operating this placer, the quantity of water available is of vital importance. Water as at present developed in some small springs or rock tanks along the bed of Weaver Creek and its tributaries shows that there is a certain amount of underflow which is said to be continuous throughout the year. However, the topography of the ground, coupled with the average rainfall which does not exceed 10" or 12" per annum, except near the tops of the mountains, would ^{not} indicate that there is any large amount of water locally available, although no definite statement on this point can be made without further investigation. Although some water might be obtained from Antelope and Martinez Creeks to the west, the nearest flow of any importance is found in the Hassayampa River five to six miles south and east and about 600' below the level of the placers.

The water rights on this river I believe are held by R. M. Merrill of San Francisco who should be consulted before any plans for securing it are made. In any event the cost of a 4" pipe line from the river would run to about \$30,000, plus say

\$20,000 for pumping plant and the cost of pumping would be a continuous operating expense.

Placers similar to the Red Bank, where the gold is free and comparatively coarse, are generally worked by one of the following methods, excluding dry concentration which the moisture in the sand and clay would pretty surely render very inefficient.

- First - Mining by pick and shovel and washing by hand in pans or rockers.
- Second - Mining on a larger scale by pick and shovel, or with plow and scrapers, and washing in sluice boxes with riffles or in ground sluices.
- Third - Mining by mechanical means such as power scraper, drag line excavator, dredge, or steam shovel, and recovery in sluices or washing plant.
- Fourth - Hydraulic mining, that is, washing down the banks with a stream of water under high pressure and running the dirt into washing plants or through sluices with riffles.

With reference to the first method, this is only applicable to high grade deposits where the values are many times those indicated at the Red Bank and, even though some large nuggets might be found from time to time, it is certain that this could not be applied with any continuous profit, and the fact that the present operators, who are very skillful with the pan, have worked along for many years earning only the meagerest kind of a living, and are now willing to sell out at a low figure, tends to substantiate this opinion.

As to the second method, the existence of so large a percentage of rocks and boulders would always make pick and shovel mining very expensive and probably run the cost up to \$2.00 per yard near the creek and a higher figure at greater distance from the banks, which, obviously, would not make this method of mining attractive from the financial standpoint; scrapers and plows could not be used to any extent whatever.

Application of the third method would result in decreasing mining costs, but would involve a substantial expenditure for plant, equipment and water supply; the greatest item of cost

would be moving and stacking the boulders and rocks, which in many cases would be very hard to handle, and would make the progress of the excavators or shovels impossible without the assistance of rock derricks, and the profit in my opinion^{is} extremely doubtful.

I might state that your placer ground is very similar to others which I have examined along Lynx Creek and the Haysampa, Big Bug and Placerita, where the comparatively high values induced operators to install fairly substantial equipment, but the cost of handling the boulders proved prohibitive and every one of these ventures, so far as I can learn, was a financial failure and would serve as a warning against a repetition of any such attempt.

In reference to the fourth method suggested, namely hydraulicing, it can be said that this is by far the cheapest method of placer mining when favorable conditions exist. However, in your case, conditions are not altogether favorable, first, because the cementing dirt between the boulders may prove very difficult and expensive to dislodge by any giant unless working with excessively high pressure and it may require mechanical apparatus to disintegrate the clay. Second, because the boulders themselves will require a certain amount of handling, although less than would be involved in applying other methods, and, third because of the limited local water supply which would make it impossible to handle any large tonnage except by an expensive installation and further necessitate recovering the tailing water from below the flumes and pumping this back to the storage tanks.

Other conditions such as the absence of any difficulty in disposing of debris, the coarse character of the gold and the general topography of the ground, are favorable and I think that this is the most promising method of mining suggested and that the success or failure of the operations at your Red Bank Placer will be largely dependent upon the possibility of hydraulicing on a com-

paratively small scale with reasonable margin of profit, and, since the value of the ground is in itself high, there seems to be a possibility of putting such operations into effect with financial advantage.

RECOMMENDATIONS

I, accordingly, recommend:

- First - That the legal status of the claims should be thoroughly investigated to determine whether the locations are valid and the claims in good standing, and whether the parties with whom you are dealing would be able to deliver clear title. ✓
- Second - If the matters mentioned above are found to be entirely in order, that you extend your present option from the owners for as long a period as possible. ✓
- Third - That you should further investigate the value and extent of your ground and the possibility of hydraulicing, first, by carefully studying the water supply and calculating the maximum amount of water which might be obtained from the various sources, and the approximate cost of bringing this water to one or more suitable points. If it appears that sufficient water can be obtained without prohibitive cost, I suggest that several pits should be sunk from the surface to bed rock and at least three more tunnels run in for say 100' from the bank and if the results are favorable that an experimental plant should be provided through purchasing or leasing a small high-pressure pump to be driven by a gas engine and equipped with pipe line, nozzle, (giant) and to be installed in connection with collecting flumes and sluices in which riffles would be provided. The water for such an experiment could probably be obtained from the well located near the camp which ought to be sufficient to permit a fair trial and an experimental operation of this nature conducted over a period of say three or four weeks should give extremely valuable data, particularly in respect to the following:
- First - The quantity and pressure of water required to actually break down the gravel from the boulders which it now cements and disintegrate the clay. Records of various placer operations indicated that the water required varies within such wide limits that no definite estimate can be made regarding any particular placer ground except after an experimental test of this kind.

Second - The average percentage of boulders and rocks and the cost of handling them to open up channels through the deposit for advancing the hoses and nozzles and installing the sluices.

Third - The average recovery of gold per cubic yard excavated which can be made the basis of reliable calculations as to the ultimate profit, if any, that might be obtained from following this procedure on a much larger scale.

While this experiment was in progress more detailed estimates could be made regarding the initial supply of water required and cost of obtaining same and of reclaiming as much of the water from the tailings as possible and returning this to the storage tanks.

Everything considered, I am inclined to believe that there is a chance of operating this deposit with a reasonable margin of profit and I think that further exploration and testing is justified, but, if you decide to proceed, it would be very advisable to first obtain if possible without much expense, options on additional placer claims located further down the gulch, since if operations proved successful in one section of the gulch, the price at which all other claims could be obtained will mount rapidly. In the lower sections of Weaver Gulch it is to be expected that the percentage of boulders will decrease in proportion to the gravel so that operating costs should diminish, but, on the other hand, the gold will naturally be finer and probably scarcer so that a lower recovery, as well as cheaper costs, must be expected.

Hydraulicizing operations have generally only been successful where a large flow of water was readily available, but for the most part these have been conducted on ground where the values were much less than is the case at the Red Bank.

CONCLUSION

Summing up, I should say that your property is not sufficiently explored, nor are the water conditions and other essentials sufficiently well established to permit any definite statement as to its value. I am satisfied that there is a great deal of gold in the placer and that the average value will probably prove to be in the order of those cited, but I am not satisfied that you can recover the gold with a working and investment cost that will leave a net profit. I do feel that further exploration and investigation is justified and advise you to proceed along the lines indicated without making any large expenditure except for development and testing from which the recovered gold should cover a portion of the expense.

The money which will have to be spent to pretty definitely prove or disprove the value of your property will be essentially a mining gamble and may be entirely lost or yield many hundred per cent of profit. The amount of this expenditure cannot be definitely estimated, but this is not a "poor man's mine" and should not be so considered, and, unless you find legal or water conditions prohibitive, it would be prudent to provide an exploration ^{and testing} fund of at least \$10,000.

I think that this is a good gamble and that it should make an appeal to people who are willing and able to engage in such a speculative venture especially at the present time when the price of all other metals is low and when gold mines are being more sought after than at any time during recent years.

Very truly yours,

GMC:EBH.

L. H. Colver

Mr. John B. Ehrhart,
Phoenix,
Arizona.

J.M.C.

2 copies on this
note

Dear Sir:

REPORT
on the
RICH HILL GOLD PLACERS
OCTAVE
WEAVER MINING DISTRICT
YAVAPAI COUNTY, ARIZONA, U. S. A.

By - John M. Nicol,
Consulting Engineer.

Crocker First National Bank Building,
San Francisco, California.

OBJECT OF THE EXAMINATION:

The object of the examination on which this report is based was to make a reconnaissance of the district as a whole, to check to some extent the data already obtained, but more particularly to collect data as to the geology and the source of the gold, and as to structural conditions of the gravel as affecting the distribution of gold over such a large area; and generally to express an opinion as to the feasibility and value of the project as a whole, more particularly with respect to dredging operations on a large scale on the lower gravels.

No attempt to sample was made during the present examination, as a sufficient amount of work by other engineers appears to have been done along these lines to indicate very valuable areas of gravel, and I would not consider a limited hand sampling as giving any additional data of immediate value. Any further sampling of such a large deposit must be carried out with the proper equipment and in a systematic manner. This matter is referred to in another part of this report.

LOCATION OF THE AREA UNDER CONSIDERATION:

The properties are located a little to the west of the center of the State of Arizona, U. S. A., within the area outlines in red on the accompanying maps.

The immediate gravel areas are deltas built out by Antelope and Weaver Creeks on to the plains to the southwest of Weaver Mountains. The head of the delta is approximately at Octave (see Map) Located about nine miles southeast from Congress Junction on the Sante Fe Railroad.

TOPOGRAPHY, CLIMATE AND GENERAL CONDITIONS:

The district is typical of the desert areas of the Central and southwestern part of Arizona.

Weaver Mountains rise abruptly from a great desert plain. They are a bold and deeply eroded range of mountains, carved out from an extensive area of very early granite intrusives of batholithic proportions.

The eastern portion of Weaver Mountains are of a complex of much more recent (geologically speaking) extrusive volcanic rocks. This area cuts off and forms the head of the valley of Antelope Creek. The highest point being 6,391 feet altitude.

The railroad station at Congress Junction has an altitude of approximately 3,000 feet and the mine camp of Octave (quartz mine) has an altitude of approximately 3,300 feet.

From this point the delta fan of gravels slope gently down to the main drainage valley of the Hassayampa River.

There are two gradually diverging slopes. The first slope is to the south and southeast and is drained by Cuanide and Yaqui Gulches which finally join the Hassayampa above the "Box" (see map) The second slopes to the south and southwest and is the most important body of gravel. It is drained by the lower Weaver and Antelope Creeks. These, after joining Martinez Creek, flow into the Hassayampa below the "Box" (see Topographical map).

The division of these two deltas or gravel slopes, seems to be influenced by a line of low hills, viz, "Round Mountains". The Hassayampa has cut a gorge through this line of hills which is known as the "Box".

The general slope of the gravels gives a grade of approximately 150 feet to the mile and the beds of the present gulches which have been eroded through the gravels have slightly steeper grades, until they all unite in a big flat with the Martinez Creek. Taking a general line at right angles to the slope of the gravel, and also to the erosion of the gulches, it is noticeable that the top, or un-eroded parts of the main gravel banks, show a remarkably even peneplain, as is evidenced on reference to the contour line of the topographic sheet. Further reference will be made to this when discussing the structural nature of the gravel deposits as it is indicative of some rather interesting possibilities.

The total surficial area of the gravels under consideration cover an irregular zone approximately two miles across at the upper end, and about three miles across at the lower end, and about five miles long.

Within this area approximately six thousand acres of placer claims have been tied up and are now held as one group, which forms the placer dredge mining ground the subject of this report.

The climatic conditions are favorable for work all the year, the winters are mild and the summers, although hot, are not subject to the excessive hot spells of some parts of Arizona.

The rainfall is small and erratic as is usual in all the desert areas of the southwest of the United States. Some years there are good seasons, and almost every year there are short spells of heavy rainfall which causes a heavy runoff in the streams and gulches and admits of impounding water where impounding sites are available. In counting on water resources and annual impounding sites, the average of three to four successive dry years should be taken. When the impounding site admits of several years equalization-storage, the mean of several years, including wet years, may be taken, in the appendix, data will be found on this subject.

The average at Congress may be considered as from 10 to 12 inches and for the Kirkland and Peoples Valley water-shed as from 15 to 19 inches; and the upper Hassayampa River drainage areas as from 14 to 16 inches of rainfall.

The average evaporation rate of central and southern Arizona is very high, but would be considerably less in dams at the higher altitudes.

There is a small and constant flow of potable water in Antelope Creek just above Stanton and there is a good well at Stanton.

There is potable water in a well at Weaver, and a very small flow in evidence on Weaver Creek at about the 4000 ft. contour. But over all of the great gravel area of the gravel slopes no water is in evidence and none can be found in shafts. But during heavy rainfall or cloudbursts, the gulches become raging torrents and become impassable for several hours.

There is a camp with a considerable number of good buildings at Octave Quartz mine (at present inoperative) and there is a store, post office, and a telephone line connecting with the outside world. The camp is well supplied with a good supply of drinking water piped in with a pipe line several miles long from springs on Yarnell Mountain.

Excellent facilities for camp arrangements could probably be made here, also a supply of water for test purposes, by rental from the company owning the property. This could be a great consideration during the operations of thorough test-sampling and also during the first stages of actual construction work.

TRANSPORT AND LINES OR COMMUNICATION:

The Santa Fe Railroad (branch line) between Phoenix (the capital of Arizona) and Ashfork Junction on the main line, passes within a few miles of the property. The nearest station siding is at Harquahala, about four miles from the lower end of the property, but there are no roads, but an auto truck road could easily be built.

The railroad point generally used is Congress Junction. Here there is a railroad, depot, post office, telegraph office, two hotels, restaurant, two stores, garage and repair shop and a total population of about fifty. From this point to Octave there is a rough road passable for autos, distance about nine miles.

The nearest town at which medical assistance can be obtained is Wickenburg. The nearest city of importance is Prescott, about fifty miles to the north.

There is a new highway of excellent construction and well surfaced which is now nearly completed and passes through both Wickenburg and Congress. This is the main State highway from Phoenix to Prescott, and forms a valuable and convenient addition to the means of communication and places the mines in easy communication with the outside world.

There would be no difficulty in opening up truck roads to any part of the property. For the transport of heavy dredging machinery, I consider a line from the lower end of the property to some point on the railroad as being better than to Congress Junction; but for all preliminary work Congress Junction should be the point of connection with the railroad.

AREA OF CLAIMS AND TITLES:

I have not investigated this matter as I have accepted the owners statement that an area up to 6,000 acres can be delivered with clear title when required.

WATER SUPPLY FOR DREDGING OR PLACER OPERATIONS:

As I have already indicated there are ample and excellent sources of water supply for camp and testing purposes; but in the immediate vicinity there is no water for mining purposes. This is the real reason why this valuable body of gravel is still intact.

All the recorded production to date has been from easy and shallow points of considerable natural concentration in mountain gulches and cross-wash gulches near the head of the delta or on the upper gravels.

The work has been entirely dependent on the flood waters in good winters, or on crude hand dry-washing methods. Nothing but the richest zones of concentration averaging several dollars per cubic yard and upwards have so far been worked, and only relatively coarse gold could be saved by this means, and therefore all the large bodies of gravel are entirely virgin and intact.

Within the zone under consideration there are large areas suitable for standard dredging operations; these areas are the large flats of gravels of secondary concentration in the bottom of the lower gulches.

The delivery point for water for the first areas to be considered would be about the 2800 foot contour (see Topographic

Map). Water may ultimately be required as high as the 3100 foot contour.

A preliminary study of the water situation has been made and a report rendered by Mr. Charles Kirby Fox. With certain reservations given below, I find that this report covers most of the available water sources. It shows conclusively that with sufficient capital ample water can be obtained for a number of dredges.

Briefly reviewing the report, it shows that there are four main sources of water supply:

- > (1) The main Hassayampa River at the Walnut Grove Dam Site:
- (2) An impounding site at the outlet of the Lower Kirkland Valley:
- (3) An impounding site at the outlet of Peoples Valley:
- (4) Pumping water from the lower Hassayampa River.

There are several other minor sources of water which I consider as insufficient for any dredging operations of importance.

As a summary I may state that sufficient water can be made available to work these placers by dredging even on a large scale if desired, and the cost will not be prohibitory considering the reported richness of the ground, and furthermore, any water system developed will always have value for agricultural purposes, and would be a permanent asset long after the mines are worked out.

The water question is more of a political and legal one than one of engineering difficulty. With sufficient capital I see no difficulty in providing all the water required.

GENERAL GEOLOGY OF THE DISTRICT:

All the central and southwestern part of Arizona is, geologically speaking, of great age. Weathering and erosion of the rock surfaces of mountain ranges has developed on a vast scale and through out great epoches of time, with the result that large areas of underlying rocks of great age have been discovered by erosion. In other words, the gradual wearing down of the mountains and the leveling off processes and corresponding filling-up of the valley (constructional) has been going on with less interruption from young or recent mountain building forces and extrusive processes than is the case in California.

There is evidence over considerable areas of tertiary eruptives, and some later flows of basalt, but over the greater part of central and southwestern Arizona there are very limited areas of the later sedimentary rocks. The mountain ranges are either a complex of schists (mostly archean), with intrusions of granitic rocks (mostly pre-cambrian), or else the remains of massive tertiary extrusives.

There has been no detail geological work done in the vicinity of Octave (Rich Hill) and in the short time available during a rather hasty reconnaissance I could not possibly do more than make a general observation of the quite complex geological conditions surrounding the base of Rich Hill. I took no geological samples and made no identifications of rocks other than megascopic field approximations.

But pending further investigation, I think the following will

be found useful as a tentative if rather hypothetical interpretation of the surficial phenomena in evidence.

Rich Hill is a mass of very early intrusives, - granite, and appears to be distinctive to the main granite of Weaver Mountains to the northwest.

There is a fairly strong belt of schists with an almost vertical dip, and a general north-south strike that is in evidence on Antelope Creek, and which can be traced for a considerable distance above Stanton. A similar belt can be traced between Octave and Weaver on the east side of Weaver Creek.

Tentatively I can co-relate these schists as Archean. The granite is evidently intrusive to the schists, a little above Weaver and again right on the top of the north end of Rich Hill, there are two large masses of what appear to be a dark, highly silicified schistose-slate, of great age, highly metamorphosed and contorted. I would classify them as a partly eroded roof-pendant of what were the overlying rocks at the time of the intrusion. They are similar to many of the early Paleozoic sedimentaries.

I noticed a great number of fragments of the same rock scattered all through the gravel even as far as four miles down the gulches.

There appears to have been a considerable amount of magma differentiation, and there are areas of rock rich in the ferro-magnesian minerals, in places forming almost a hornblende-gabbro, this in places has been intrusive as irregular masses and vein-dikes into the fractured complex zone surrounding the granite. There are also a number of large pegmatite dikes cutting both granite and schists.

Later than these are a number of small vein-dikes of actinolite, intrusive and at times faulting an early series of quartz veins. I noticed a number of stringers of vein dike quartz veins cutting these almost at right angles and again evidencing faulting.

There is a more or less regular system of quartz veins, which have a NW to SE strike and dip into the hills. These have been worked as gold quartz mines, of which Octave was the principal producer. But in addition to these larger veins there is a vast complex network of quartz stringers, lenses, and pockety deposits which cover Rich Hill and particularly the slopes of the hill to the east between Octave and Weaver and also above Stanton, and to a lesser extent on the slopes to the west of Antelope Creek.

The gradual weathering and decomposition of this vast complex of small gold bearing veins has been the source of the gold in the detrital gravels below.

I consider the general indications are that there have been a number of successive periods of gold impregnation in and about the Rich Hill granite plug; from very early geological times up to and probably including a final mineralization during tertiary times, - the corresponding period of enrichment accompanying the Miocene intrusives in Mexico and California.

There is evidence of great movement as affecting the granite plug of Rich Hill, which I could not trace in the main granite range to the northwest or at any rate they are not as clearly in evidence. These movements, which were profound and intense, have developed a series of flat dipping cleavage planes in the granite mass, striking about NW and SE and dipping into the mountains. Towards the north the dip increases until in the northern central part of Rich Hill they appear to be almost vertical. Movement and pressure have

developed a gneissoid structure in some places.

It is also evident that there was formerly an extensive "blanket" of earlier rocks into which the granites intruded, and that there have all been removed by erosion, the slate roof-pendants, mentioned above, being the only remaining evidence; and that it is more than probable that there were numerous and possibly richer gold quartz veins in this eroded "blanket". This probably represents at least several thousand feet removed through a period of many millions of years.

It is of course true that the greater part of the gold eroded during these earlier periods has gone far down the streams, but what I wish to emphasize is that the geological evidence shows intensive gold impregnation with successive periods of enrichment of gold quartz veins of the Rich Hill District, also the great age of the District, with consequent long periods of erosion, with concentration and re-concentration of the gravels; so that there is the opportunity for a very general distribution of gold over large areas and far down on the course of the gravel deposition, - providing that we keep within the limits of the zone that has developed from the source of the gold, viz. The gold bearing veins in the general zone of impregnation. This zone is covered by a "fan" of gravels developing from Weaver and Antelope Creeks south, southeast and southwest.

Another fact that I wish to draw attention to is the following: Antelope Creek has eroded a valley following the line of the belt of schists (already referred to) and gives evidence of being the deepest valley cutting through the mountain barrier of granite, of any valley except the present Hassayampa River. The head of Antelope Valley is cut off by a mass of Tertiary eruptives (volcanic flow rocks). The valley is evidently older than these eruptives. It seems quite possible and even probable that the present Antelope Valley is the lower end of an extensive pre-tertiary valley that at one time drained a large area to the north; possibly an area now drained by the upper Hassayampa and Kirkland Rivers.

When the Tertiary eruptions started they dammed this valley; and eventually new drainage lines were formed. Possibly a large lake was formed, the overflow of which excavated the gorge of the Hassayampa below Walnut Grove. There is some correlative evidence of this in that there are large areas of stratified water deposited tuffs in the Walnut Grove section.

Continued and extensive eruptions completely changed the topography and built up a high chain of mountains north of the head of Antelope Valley and new drainage lines were developed.

This larger valley that certainly once existed and continued southwards below the mouth of Antelope must have maintained a deeply eroded pre-tertiary channel down to some meeting point with other valleys, say at some point of the present lower Hassayampa, probably a little west of Round Mountain.

When the main flow was dammed back, the erosional power of the stream would be less, and it would begin to fill in and become constructional, especially as there was probably a great deal of detrital matter from the volcanic action.

It seems therefore highly probable that there are deep-seated underlying beds of gravel, of pre-tertiary age; and also probably one or more well defined old river channels, which are now buried under the existing layers of Tertiary and Quaternary gravels.

These earlier gravels, naturally represent a much longer

period of erosion, of sorting, concentration and reconcentration and may be completely preserved by the present fan of constructional gravels.

I consider it essential to explore and prove the question by a series of carefully located shafts and some drifting. It must also be remembered that there have been many changes of climate and that in the pleistocene period, subsequent to the volcanic eruption, there was a long period of very heavy rainfall and the sorting action of the flood waters was very active, and that therefore in any case there should be a zone of considerable re-concentration at the point where the grade changed, from the grade of Antelope Creek to the juncture point of the Hassayampa and Martinez Creek, at or about the flats just north and west of Round Mountain. Pit sinking and test work should be developed at this point.

I would suggest that if deep pits or shafts are put down to actual true bed-rock, that these should be located by survey and a cross-section should also be made, and as far as possible a contour line of the underlying bedrock established.

There are a number of other interesting geological features but which do not have an immediate relationship to the interpretation of these gravel deposits, so they are not germane to this report.

SUMMARY OF GEOLOGICAL INTERPRETATION:

(1) That the district is one of great geological age and erosion and gravel concentration has been active through a great period of time.

(2) That Rich Hill forms the center of a zone of intensive gold impregnation, as evidenced by the great number of veins and that furthermore there appears to have been a number of different and successive periods of mineralization.

(3) That Antelope Valley shows indications of having been part of a main valley of a larger drainage system, and that this may account for the great number of water worn boulders in the lower gravels; and that as a consequence there are great probabilities of there being buried old channels under the present fan-blanket of gravels.

(4) That the great age of the deposit and the evident long period of deposition, erosion and re-concentration of the gravels make it likely that there is a very general distribution of the gold and also that the lower true bedrock zones should be rich and that it is necessary to explore for these. They will probably occur in well marked channels. There is also a chance of greater deposition at the meeting point of the lower cross valleys and lower Antelope valley - though this may be deep.

THE GRAVEL DEPOSITS:

Their extent, nature and structural conditions, zone of distribution of gold and reported values; The whole of the slope from the foot of Weaver mountains extending over the plains is covered with a great blanket of "wash", a great part of which is more or less waterworn and partly stratified gravel.

The area that debouches from Antelope Creek and Weaver Creek (marked with yellow on the topographic sheet) shows a far larger proportion of well washed gravel, and the positive evidence of being true

I state, I am 50 and a

Y. Press 2
Cage, say by the bridge
m. - 1/2 - 1 billion here

200 acres of 230 in diameter = 1,000,000 yds X
 Ann depth of 10 yds = 10,000,000 cu yds or X
 0.13% of 50 yds = 5,000,000

~~100%~~

river gravels. This area is the only one that is known to be gold bearing in a marked degree.

I have found various statements in which it is asserted that these gravels are relatively shallow. This is not true - I find the existing exposed or surficial gravels may be classified as:

(1) Original primary gravels, in places, even on the surface, these are compact and partly cemented by infiltration of alkaline matter, - the so-called "caliche".

(2) Gravels in part re-concentrated and washed down by recent (late quaternary) gulch waters, and forming intermediary benches and gradual slopes, up to the main banks of No. 1.

(3) Loose and sandy gravels forming the most recent and actual stream beds in the floor of the existing gulches, forming a third stage of very recent re-concentration.

These later gravels generally rest directly on a floor of No. 1, with "Caliche" structure, and so-called false bed-rock.

I have already mentioned that the main body (No. 1) of gravels shows a remarkably even level at any point where a cross section is made at right angles to the median course of Antelope and Weaver Creeks it forms what geologically is termed a peneplain.

With a hand level I took several approximate cross sections, and I found that the level of the peneplain is generally from 60 to 80 ft. above the surface of the wash on top of No. 3 gravel.

In two cases I found shafts over 30 ft. deep below the level of No. 3, so in this case the total depth of original gravel was over 110 ft. So far true bedrock has never been reached.

From the general structural conditions and the position of bedrock at the upper end (it is exposed at Antelope and Weaver Creek where they debouch from the mountains) and also the slope of Round Mountain, I expect that bedrock will be found within 50 ft. at the upper end, and within 80 ft at the lower end of the present bottom gulch levels. In any event there is overwhelming evidence that the main body of No. 1 gravel will average over 75 ft in depth over the whole property.

The surficial area of the 6,000 acres is approximately 30 million square yards, and the average depth 25 yards gives a gross cubic content of 750 million yards of gravel.

There is good evidence that the source of all this gravel was gold bearing, and that it has been concentrated and reconcentrated over a vast period of time. There seems to be reasonable evidence that at least all the gravels of No. 2 and No. 3 class are recent local gulch concentrations, and that a large part of these carry gold in commercial quantities.

The structural nature of this great fan of gravels is not altogether easy to explain. If it was built up of more or less fine and well stratified gravel, it could be explained by the usual constructional out-building effect of a stream delta debouching from a mountain valley on to a plain. But there is very little regular stratification, and relatively coarse gravel and occasional large boulders are "peppered" all through the mass. Furthermore, rather large and perfectly waterworn gravel and occasional small boulders are to be found right on the surface of the top banks, at least four miles south

of the mountain valley limit.

Tentatively, I think, that while it is not in any way a glacial deposit, I believe "levee building" by minor snow and ice action, has helped to control the flood and maintained the water within, at times, narrow limits, thus facilitating the transportation of coarse material over relatively great distances on the surface of the fan delta. This probably represents a period of heavy rainfall during the end of the ice age in the late Pleistocene.

However it came about, there is a very general and rather regular distribution of a limited amount of well water worn and coarse gravel over the whole fan of gravel.

Where recent flood action has cut gullies through the main mass of the gravel it has tended to wash away the lighter material and "drop" and concentrate a blanket of coarse rock on the bottom.

These blankets of coarse gravel and boulders, being very much in evidence, having caused some of the investigating engineers to form a wrong idea of the extent of these "boulders" to be handled in case of dredging operations being commenced.

The photograph taken just at the outlet of Twinshaft Flat, (see photos) shows a typical extreme case in the middle section of the ground. Actually just above the ground and just below there are shafts sunk to approximately 30 feet which show no excessive proportion of heavy gravel, and also clearly indicate structural conditions, - showing that the boulders are a total concentration out of 90 feet (vertical) of erosion, and that they rest on "Caliche" or a false bedrock formed of average primary gravels. In another section I suggest a method of which these boulders can be uncovered, mined and broken up or removed in advance of the actual dredge out.

The recent, and up to the present, erosional forces that have cut the existing gulches below the general peneplain of what I term primary or No. 1 gravel, have also tended to concentrate the gold, so that the No. 2 and No. 3 gravels contain a considerable enrichment, representing all the gold out of the gravels eroded to form the gulch this as already stated is from 60 to 90 feet vertical depth, and as No. 2 gravels generally form a relatively shallow blanket of from 2 to 20 feet, averaging about 9 to 10 feet, the ratio of concentration has varied at from 8 or 10, to 1.

This accounts for some of the high sampling results of some of the shallow pits in No. 2, and also that the drywashers have been able to make a living on the edges between No. 2 and No. 3. If the original average of the upper parts of the primary banks averages 40¢ or 50¢ it accounts for shallow pit sampling in No. 2 showing returns of several dollars per cubic yard. It also shows what we might expect if we can find, yet undisturbed, the original channels on true bedrock, and shows that it is well worth looking for them.

It is to be noted that even on the flat surface of the tops of the high banks there has been a certain amount of enrichment due to the concentrating action of the run-off of rain water, and there is a shallow blanket all over the surface of from 6 inches to 2 feet in depth that represents a probably concentration of from 3 to 5 to 1, so that all work on sampling must take into account the above structural facts, and the results of the blanket enrichments must be recorded separately from the average. This is also particularly true of all minor gulches, gullies, washes, draws, etc.

Care must also be taken to distinguish between upper primary gravels, 1. E. No. 1 and gravels of the No. 2 and No. 3 grade, and if deep shafts are sunk, careful watch must be made to distinguish between the great mass of No. 1 gravels and possible underlying pre-tertiary gravels.

The existence throughout the upper exposed portions of even the big banks of rock fragments of the tertiary lavas, shows that all of the banks at present exposed are of quaternary constructional periods, although they may contain a considerable portion of reconcentration of early banks and benches. This seems probable as I noticed many fragments and even some boulders of the metamorphic rocks and schistose-slates, which evidently correspond to an erosional period of the upper capping of rocks above the granites.

I noticed that the proportion of heavy and large boulders is excessive in the upper gulches close to the debouchment from the mountains, but that further down the gullies the proportion steadily decreases, until from the middle section south I consider the ground as suitable for dredging, providing large sized and powerful dredges are used, with not less than 12 cubic ft. buckets. This is dealt with under another section.

The zone of the distribution of the gold is evidently limited to the fan debouching from Antelope and Weaver Creeks, and to a minor degree from the gulches to the southeast up to Foot's Canyon. But to the northwest immediately you pass the zone of gravels built out by Antelope, gold in paying quantities is no longer found.

The Hassayampa River undoubtedly brings down a certain amount of fine gold, and there are indications which I did not have time to investigate, that it at one time flowed northwest from the entrance of the "Box" and probably passed to the north of Round Mountain and probably there was a general junction just about where Martinex, Antelope and Weaver now come together.

Gold seems to be distributed all the way down the fan to this point and also on the southeast slope, down to the Hassayampa River above the Box.

REPORTED VALUE OF THE GRAVEL:

Personally I did no sampling, as I could see no use in duplicating work already done, unless I could apply more thorough methods, which I did not have the time or equipment to carry out. I refer to a proposed plan of sampling in another section.

I did, however, see ample evidence that it has been a recognized dry placer district of considerable import; and I saw dry washing at work, and quite a number of samples of gold that had been bought by merchants. There is also sufficient data in the U. S. G. records to show the recognized importance of the camp.

A great quantity of data and various reports have been submitted to me, and I hereby - beg to quote from these as follows:

"VALUE" DATA OF OTHER REPORTS:

J. E. Russell states: "I found gold in every pan--Where I panned it would run from 30¢ to 60¢ per cubic yard, if not better... I got 60¢ from one pan...and \$1.38 from another... I took out a ditch and ran 25 or 30 yds. of gravel... the recovery was about \$4.80 per cubic yd.

W. L. Leland states: "You have in my judgement, made a big

mistake in not going below your so-called false bedrock, because it is possible, and in fact quite likely, that your best values will be found down deeper ... As a matter of fact, I got my best sample down in the false bedrock ... If the gold I found has been flaky, or if I had found places barren of gold altogether, which I did not, I would not, after making only 30 tests, even touch on the subject of values in this letter. However, the evidence of extensive dry-washing in all directions is a factor to be considered in connection with my own sampling. I did not weigh the gold I panned out, but from forty years experience I am positive it was not less than \$1.50 per cubic yard after estimating that half of your yardage is composed of small boulder and coarse gravel that does not carry values, and which are always thrown out in filling a pan ... Now it is highly improbable, considering the general law of averages, that I would happen to stumble on to only rich spots every time, yet it might possible be so. Noone suggested where I should take the samples and no one was given the slightest chance to salt any of the dirt I took as samples.

"So much for values so far as 30 samples can be considered as establishing same on a very large area."

W. A. Farish states: "In sampling this ground I dug a cubic yard of the ground at various points, loaded it into a wagon (after placing a canvas in the wagon to prevent any loss) and hauled each hard so obtained to the river and ran it through a small sluice box, catching and keeping the gold content of each sample separate. The results were taken to a laboratory and their amount and value carefully determined. I took about a dozen samples, over an area of about 300 acres, and the results ranged from 30¢ to \$1.47 per cu. yd. As I remember throwing out the high sample of \$1.47, the results averaged about 45¢ per cubic yard ... I met Mr. Axtell, who informed me he had made extensive drilling tests of the ground and the engineer referred to above was present and did the sampling of the holes and after throwing out the heavier particles of gold, to be safe, the ground ran over \$1.00 per cubic yard."

A. H. McNeer states: The area of ground under consideration (see diagram) is shown as follows:....placing a reasonable average at 20 feet; throughout the entire area checked on the diagram amounting to about 4,100,000 cubic yards. This at \$1.51 per cubic yard, making a total value of about \$6,191,000.00" (for the area of this section.)

Chas. Kirby Fox states: "The lowest values I have heard of are about \$1.30 per cubic yard. Along the benches near the Hassayampa River South of Rich Hill, it is said that the values are greater the higher one goes. At the east base of Rich Hill lying along Weaver Creek a plot of ground containing about 180 acres with about 80% boulders runs about \$3.25 per cubic yd. One acres of this ground I tested, and would feel sure in saying that it would run considerably over \$10.00 per yd. Taking ten pans from this acre I recovered \$26.30. The values at this point are very rich and coarse.

W. E. Plank states: "This ground is no exception to the rule and although there are 7,665 acres under location, I feel sure, speaking with circumspection, that but 200 acres of it are workable...While no where near sufficient prospecting has been done for operating purposes I have no hesitation in stating that it is my belief that the entire 200 acres will run some 1.35 per cubic yard.

1905 - U. S. Geological Survey Mineral Resources, "Weaver District, the Rich Hill, in this district, has yielded from the surface fabulous sums in the past. It was the scene of much activity during the spring months of the year. A total of \$16,273.00 in gold dust extracted from the gravel on the Rich Hill and vicinity, was sold to

storekeepers in the neighborhood camps."

1899 - Report of the Governor of Arizona to the Secretary of the Interior: "The gold placer deposits of Weaver are celebrated for their richness and the coarseness of the weight of the grains of gold. (Nuggetts). They are at the southern base of the mountain and west of the Hassayampa River at the foot of Rich Hill at Stanton. They have been worked for many years, Thirty or more.)

History of Arizona by Farish: "The Rich Hill channel is noted for its coarse heavy gold (nuggets) ... One of the largest found was worth \$400.00, another \$300.00, and another \$150.00 ... Three lumps taken out were worth \$1008.00 ... Nuggets to the aggregate value of some \$2,000.00 were taken out within a small area ... Pedro Lucero, at Weaver, found one piece worth \$450.00."

While I do not endorse the methods used to sample, and while I think some of the conclusions drawn in the reports are altogether correct, still we must accept, at their face value, the statements of so many different men, and there must be some ground for a tentative appraisal of the property.

Frankly, I think everybody has both over-estimated on the basis of shallow pits in No. 2, and entirely under-estimated, because none of them ever reached true bedrock or sampled it. I consider this to be absolutely essential.

The high bank of gravel to the right is a block of partly eroded No. 1 gravel, sloping to the right (east) with a blanket of No. 2, down to the flats of Oro Fino, just out of the limit of the photo.

From the starting point up to this point the flat averaged 500 yards across, and I estimate an average of 40 ft. as an arbitrary convenient working depth below pond level; there is no real level of false bedrock. It is simple a question of how deep do you want to cut into the primary gravels, or how deep do you want to dredge. Based on this arbitrary depth I estimate that this first section is 1,500 yards long, averages 500 yards wide and as 16 yds. average depth; (8 ft. to 10 ft. above pond level and 40 ft. below pond level); this gives an available 12,000,000 cubic yards.

The second section above this I estimate contains 4,000,000 cubic yards, or a total of sixteen million cubic yards for this No. 1 zone, consisting of Lower and Upper Rabbit Flat.

I made no cross section or survey of the other three zones, but I think it safe to say that sixty million cubic yards of dredgeable ground suitable for standard methods can be developed within the flats of these lower gulches.

Until I sample the ground myself I have no means of making even an approximate appraisal of the real value of this property. But based on the statements laid before me which I have quoted above we make a tentative estimate to obtain some idea of its possibilities.

If we take the value of the dredgeable areas of these bottom gulches, as averaging 50¢ per cubic yard at 80% extraction, with a recoverable value of 40¢, and even if we placed dredging costs as high say as 10¢ per yard and add to this costs for pumping water for breaking upper bank by hydraulic mining, and for extra high stacking, etc. and bring the total costs up to 20¢, it would still

leave us a net valuation of these four zones of approximately \$12,000,000.00.

In addition to this we have the possibilities of True bed-rock gravels, and of the far greater area of high banks, for which I am prepared to suggest a suitable method of mining. These statements must be taken with the reservations that I have made, but I have seen sufficient to state that I consider the body of gravel one of the largest desert placers that I know, and that there are sufficient values in evidence to warrant a thorough, complete and systematic sampling; and if the values are then found to check up, I would in that event unhesitatingly urge the investment of the large capital necessary to bring on the water and equip with large dredges.

METHODS OF DREDGING SUGGESTED:

Due to the scarcity of water and the necessity of conserving it, dredging should be commenced at the upper end of any given section, and work driven down grade. By this means tight water-holding ground will be maintained as a water-dam on the down grade side, and the loose and porous tailings will remain behind on the up-stream side. The pond can be so maintained that the tailings piles will act as a break to protect the dredge in case of cloud-burst floods.

This method would have a further advantage in developing any water that came "down gulch" as seepage or from upper ponds or during moderate rain flows.

In those cases where it is desired to work into fairly high banks and break ground hydraulically in advance of the dredge, it will be found that there will be an excessive load for the stacker, and that the increased volume to be handled will need very high stacking. In this case the "fines" can be handled by a dredge pump, and delivered a considerable distance back on to the top of the coarse tailings pile. In this case the water would filter down and return to the pond and thus conserve water, whereas, if dredging was up-stream this could not be done.

Until further exploration is undertaken with deep shafts the nature and "position-depth" of true bedrock is unknown. The value found in true bedrock gravels will determine if it will be worth while to dig to the probably great depth required. Meanwhile I am assuming a digging depth of 40 feet below gulch floor, and in this case we would be creating a false bedrock and be simply digging to a given depth in No. 1 gravels.

Assuming this to be the case I suggest the following procedure as a means to meeting the difficulty of the blanket of boulders that exists in places (as shown in Photo No. 4).

The dredge pond level to be maintained a few feet below the level of the "Caliche" floor on which the boulders are resting; an auxiliary pontoon with pressure pump to be provided to supply water to a small hydraulic mining outfit to "break bank" to a bench in advance of the dredge cut, thus exposing the boulders, the surrounding "fines" being sluiced to the dredge pond and taken care of in the normal process of digging.

The boulders as exposed could either be "block-holed" and blasted down to a size that can easily be handled by the dredge buckets, or else they could be stacked back by a derrick to one side, or to bedrock back of the digging ladder the derricks could be mounted on the side at the forepart of the dredge.

In case of required deep digging or in the event of it being

found that the big banks will pay to mine, I can see no reason why an extension of this system should not be developed to take care of quite high banks in advance of the dredge cut; of course in this event extra high stacking of the additional coarse material would be required, and also a rather larger proportion of water; also there would be added costs for pumping back a considerable volume of fines. But there is no reason why a combination of pump-sluice hydraulicing and standard dredge work should not be worked out, which would, in my opinion, meet the requirements of extra-deep digging or of mining the high banks. Its adoption will entirely depend on the values found when the properties are systematically sampled. If these are high enough to warrant the dual and increased cost, there appears to me to be no mining-engineering difficulty in the way of finding means to work all of the gravels.

This view adds greatly to the prospective possibilities of the deposit viewed as a whole, and is an additional argument for a thorough study and sampling by pits of all of the types of gravels, and to prove bedrock depths.

It is evident that if the greater part of this vast deposit can be mined and it is proved that it will pay as a commercial venture, and that we have here a very, very large undertaking, but at the same time one that can be proved-up by careful stages, and in which it will be a definite engineering development of an appraisable asset.

THE PROBABLE COSTS OF DREDGING:

I am personally satisfied that the structural conditions that built out this deposit and the richness and nearness of the source of the gold, and the long period of gravel concentration, all indicate a probability that this ground will be found to be far richer than the average California ground that consists essentially of lower river deltas.

But conversely the larger proportion of heavy gravels, the greater depth, the local absence of water, requiring considerable engineering work and expense to bring it in, and other factors, will necessarily make costs higher and require a certain amount of engineering constructive effort, to meet conditions not entirely in accord with standard practice. This however is a matter of small moment providing savable values are found to be correspondingly higher.

Tentatively I therefore estimate a base cost of 10¢ per yard for the easily worked flats of No. 2 gravels. But to meet the requirements of all four zones that I have mentioned, and to be in a position to meet possible special work, I think we should tentatively estimate as follows:

Standard heavy ground dredging.....	10¢
Extra high stacking costs.....	3¢
Pumping-fines, back over tailings.....	3¢
Cost of water conservation and delivery...	4¢
Total cost.....	20¢

This is a conservative and safe estimate. We may be able to cut costs to 12¢ or 15¢, but water costs alone will always average 3¢ to 4¢ on this basis - and assuming the data given by other engineers as more or less correct, and taking a mean average value of 50¢ per cubic yard and a recoverable value of 80%, we have a net valuation of 20¢ per cubic yard on the basis of an individual dredge capacity of 200,000 yds. for a 12 cubic foot bucket dredge. We would have a possible profit of \$40,000. per month, and with ten months working season, a net redeemable value per dredge of \$400,000. per

year. And on the same basis the four proposed zones of dredging would have a net valuation of \$12,000,000. as already stated. It must be clearly understood that this is not to be taken as my appraisal of the property, but merely as a tentative estimate based on such data as is available, and merely for the purpose of visualizing the possibilities of the property. The real appraisal can only be made by a complete study and a proper sampling with the right equipment.

Furthermore I wish to draw attention to the fact that I do not consider the above should be taken as a "limiting" valuation, because the total area of gravel is very great, and even if they prove to be lower than the estimate made, for the zones given above, if they are found to be of a commercial grade, and if a system of mining can be developed that will include the high banks and also the true bedrock zones, which so far have never been sampled, we may have to revise these tentative estimates and place the gross valuation on a much larger scale.

The above must only be considered as an economic perspective based on the limited data available.

SUMMARY:

Location: Middle of Arizona - 9 miles east and southeast of Congress Junction on Santa Fe Railroad.

Communication: Santa Fe Railroad and State Highway, Post Office on Property. Telegraph 9 miles.

Topography: Desert plains, and delta, debouching from Weaver and Antelope Creeks in Weaver Mountains. Altitude at mines 3300 ft.

Climate: Good for desert, open for mining all year. Rainfall about 10 inches. Evaporation high.

Water: Good drinking and camp supply at head of property. No water for mining on property. Abundance can be developed and brought in with sufficient capital outlay and no great engineering difficulties.

Area: Over 200 acres gravel claim can be obtained.

Gravel Structure: A large delta of quaternary gravels with part reconcentration of tertiary gravels and possibly underlying bedrock area of pre-tertiary gravels. Gravels have been re-concentrated into three types by gulch waters:

- (1) Primary gravels, deep--over 100 ft.
- (2) Secondary gravels forming flats in bottom of lower gulches. Dredgeable gravels.
- (3) Actual loose bulch wash.

Volume of Gravels: Surficial area 200 acres, or average depth 25 yds. - gives gross total of 63,000,000. cubic yards.

Value of Gravels: No sampling made - data from other reports shows \$1.50 to \$4.00 per cubic yard as average. Estimated average for working basis of valuation \$1.50 cubic yd.

General Geology: Archean schists, pre-cambrian granitic intrusives, relatively recent tertiary eruptives. Gold source from complex of rich veins in, and surrounding Rich Hill - at head of Delta.

CONCLUSION:

Well worth complete sampling and further exploration. Possible valuation very great. Immediate tentative valuation on data available

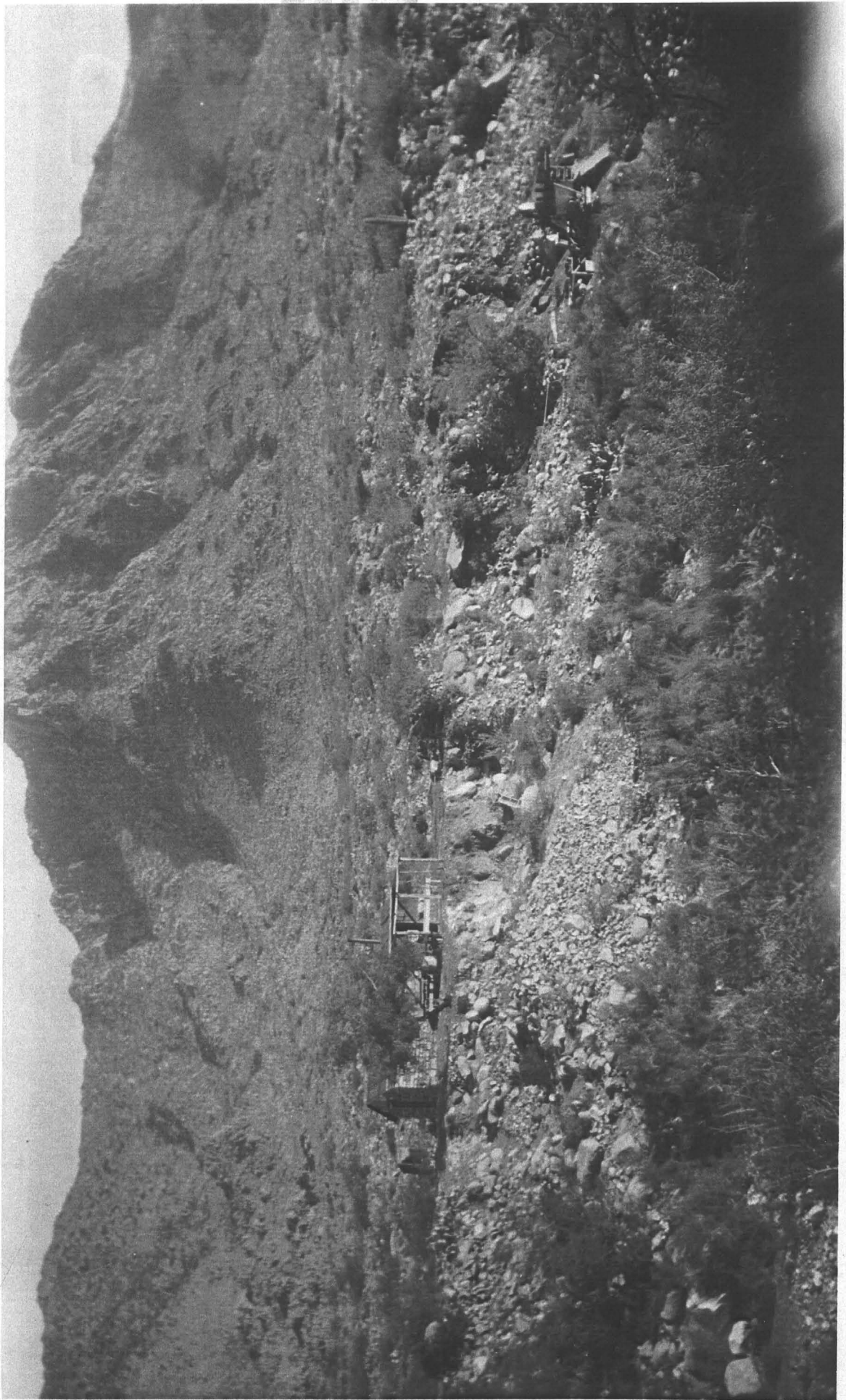
\$12,000,000.

Submitted,

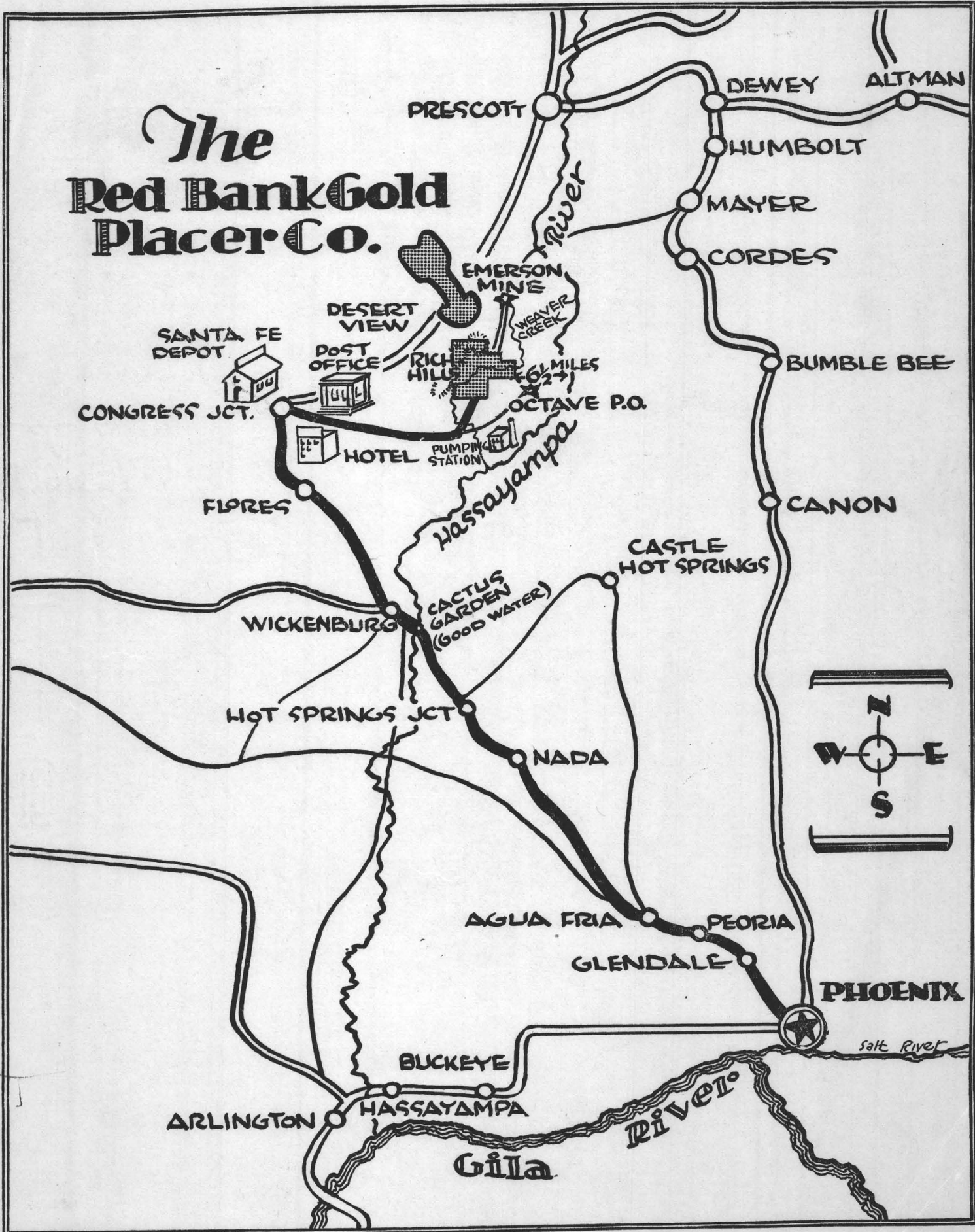
(signed) John M. Nicol.

? Date

has form to 1930

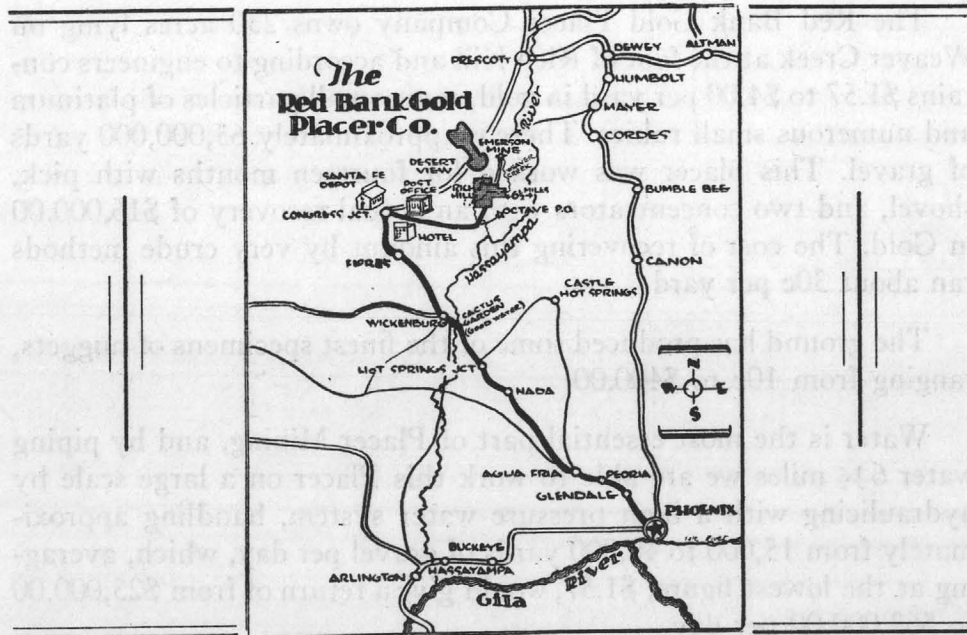


The Red Bank Gold Placer Co.



Below is an approximate cost sheet of money to be spent for the purchase of machinery, pipes, lumber, and labor to operate this Placer Mine:

6 1/2 miles (34,320 ft.) of 4-inch pipe costing 80c per ft.	\$27,456.00
Labor to lay pipe.....	3,200.00
Pumping Plant.....	4,250.00
Diesel Engine.....	8,190.00
Well (developed Water).....	3,050.00
Giant Nozzels and Connections.....	1,000.00
Lumber.....	2,000.00
Tools.....	1,500.00
Air Compressor.....	650.00
Drag Lines.....	1,500.00
Labor.....	5,000.00
Houses and Buildings.....	1,500.00
	\$59,296.00



History of **RED BANK GOLD PLACER COMPANY**

OCTAVE, ARIZONA

INCORPORATED
Laws of Arizona
PERMIT NO. 17

OFFICE
Luhrs Tower
PHOENIX, ARIZ.

Red Bank Gold Placer Company's property lies 72 miles northeast of Phoenix. Leaving Phoenix you travel Route 89, 62 miles to Congress Junction; reaching the Santa Fe Railroad Station you turn directly to the right, or in an eastwardly direction and continue for 10 miles on this road to within one mile of Octave Post Office, the Octave Mine being in plain view. At this point there is a sign with hand pointing north one mile to Red Bank Gold Placer Company property.

In May of 1928, this Placer was located and after seventeen months very extensive testing and exploring, we are able to submit supplements of some of the best engineers.

According to G. M. Butler, Director of the University of Arizona, the Weaver Mountains which are made up mainly of Pre-Cambrian granites and schists; overlain by Tertiary lavas, contain numerous Gold bearing quartz veins that were the source of these Placers. In 1899 there were a score or so of men who were working these Placers recovering over \$2,000.00 per month by panning and dry-washing.

According to G. M. Colvocresses, Phoenix, Arizona, the fineness of the Gold in Weaver Gulch as given by U. S. G. S. is 910. Tests indicated that each yard of present ground, boulders and rocks included contains slightly over \$2.00 value in Gold. The total value of Gold which might be recovered from this Placer could be figured at approximately \$2,000,000.00.

According to J. E. Russel—"I found gold in every pan where I panned and got 60c from one pan. Tests indicate this ground will run \$1.27 to \$2.60."

According to W. A. Farish—"In sampling this ground I took a cubic yard at various points, run it through a small sluice box; the results were taken to a laboratory and their amount carefully determined. From a dozen samples over an area of 300 acres the results ranged \$1.00 to \$1.47 a cubic yard."

According to A. H. McNear—"Placing a reasonable average at 20 feet throughout the entire area, amounting to 4,100,000 yards. This at \$1.51 per cubic yard, making a total value of \$6,191,000.00."

1905 U. S. G. *Mineral Resources Weaver District*—"The Rich Hill in this district has yielded from the surface fabulous sums in the past. It was the scene of much activity during the spring months of the year. A total of \$162,750.00 extracted from the gravel of the Rich Hill vicinity was sold to store keepers in the neighborhood camps."

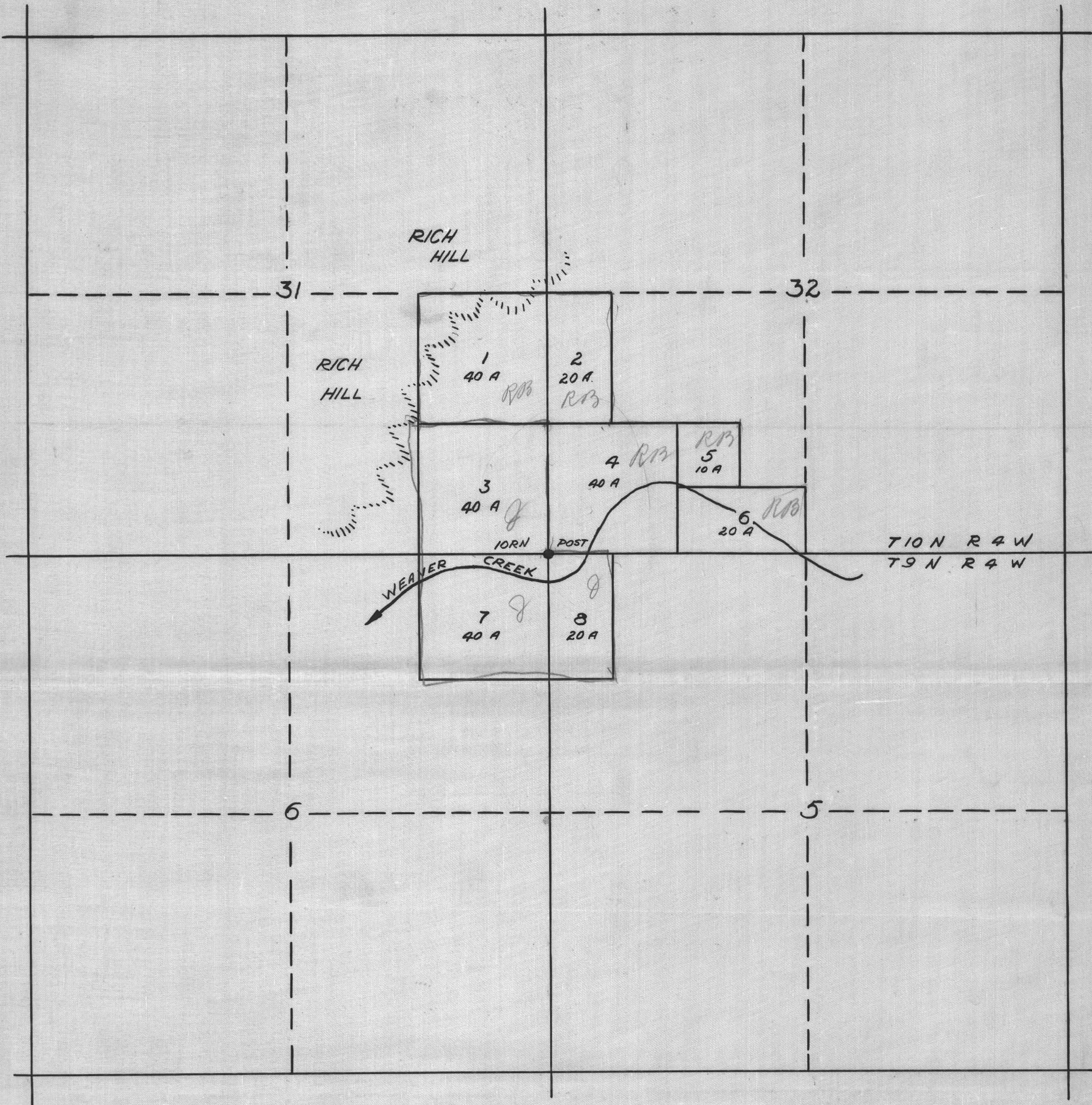
In 1899—Report of the Governor of Arizona to the Secretary of Interior—"The Gold Placer deposits of Weaver are celebrated for their richness and the coarseness of the weight of the grains of gold (nuggets). They are at the southern base of the Mountains and west of the Hassayampa River at the foot of Rich Hill."

History of Arizona, by Farish—"The Rich Hill channel is noted for its coarse, heavy Gold nuggets. One of the largest found was worth \$400.00, another \$300.00; another \$250.00. Three lumps were taken out worth \$1,008.00. Nuggets to the aggregate value of some \$20,000.00 were taken out within a small area. Pedro Lucero, at Weaver, found one nugget worth \$450.00."

The Red Bank Gold Placer Company owns 230 acres lying on Weaver Creek at the foot of Rich Hill and according to engineers contains \$1.57 to \$4.00 per yard in gold, some small particles of platinum and numerous small rubies. There is approximately 63,000,000 yards of gravel. This placer was worked for fourteen months with pick, shovel, and two concentrators with an actual recovery of \$16,000.00 in Gold. The cost of recovering this amount by very crude methods ran about 30c per yard.

The ground has produced some of the finest specimens of nuggets, ranging from 10c to \$400.00.

Water is the most essential part of Placer Mining, and by piping water 6½ miles we are able to work this Placer on a large scale by hydraulicing with a high pressure water system, handling approximately from 15,000 to 40,000 yards of gravel per day, which, averaging at the lowest figure, \$1.57, would give a return of from \$23,000.00 to \$62,000.00 per day.



PLACER CLAIMS
 OF THE
 RED BANK ^{Gold} PLACER CO.
 WEAVER MINING DISTRICT
 OCTAVE, ARIZ.
 SCALE:- 1" = 1000'
 SURVEYD (IN PART) BY:- H.D. PHELPS.
 PRESCOTT, ARIZ
 JUNE, 1930.