



CONTACT INFORMATION
Mining Records Curator
Arizona Geological Survey
3550 N. Central Ave, 2nd floor
Phoenix, AZ, 85012
602-771-1601
<http://www.azgs.az.gov>
inquiries@azgs.az.gov

The following file is part of the G. M. Colvocoresses Mining Collection

ACCESS STATEMENT

These digitized collections are accessible for purposes of education and research. We have indicated what we know about copyright and rights of privacy, publicity, or trademark. Due to the nature of archival collections, we are not always able to identify this information. We are eager to hear from any rights owners, so that we may obtain accurate information. Upon request, we will remove material from public view while we address a rights issue.

CONSTRAINTS STATEMENT

The Arizona Geological Survey does not claim to control all rights for all materials in its collection. These rights include, but are not limited to: copyright, privacy rights, and cultural protection rights. The User hereby assumes all responsibility for obtaining any rights to use the material in excess of "fair use."

The Survey makes no intellectual property claims to the products created by individual authors in the manuscript collections, except when the author deeded those rights to the Survey or when those authors were employed by the State of Arizona and created intellectual products as a function of their official duties. The Survey does maintain property rights to the physical and digital representations of the works.

QUALITY STATEMENT

The Arizona Geological Survey is not responsible for the accuracy of the records, information, or opinions that may be contained in the files. The Survey collects, catalogs, and archives data on mineral properties regardless of its views of the veracity or accuracy of those data.



INDEPENDENCE MINE PLACER PROPERTY

CHECK MINE OR PLACER PROPERTY

Nov-14th

1930

HEARD BUILDING - PHOENIX, ARIZONA

This certifies that samples submitted for assay by A. C. Haegler
contains as follows per ton of 2000 lbs. of Avoir.

[illegible]

Book.

not clear



ROAD

VEIN OUTCROP

CHURN DRILL HOLE

OLD SHAFT

TUNNEL NO 1

INDEPENDENCE VEIN

MAIN TUNNEL NO 2

TUNNEL NO 3

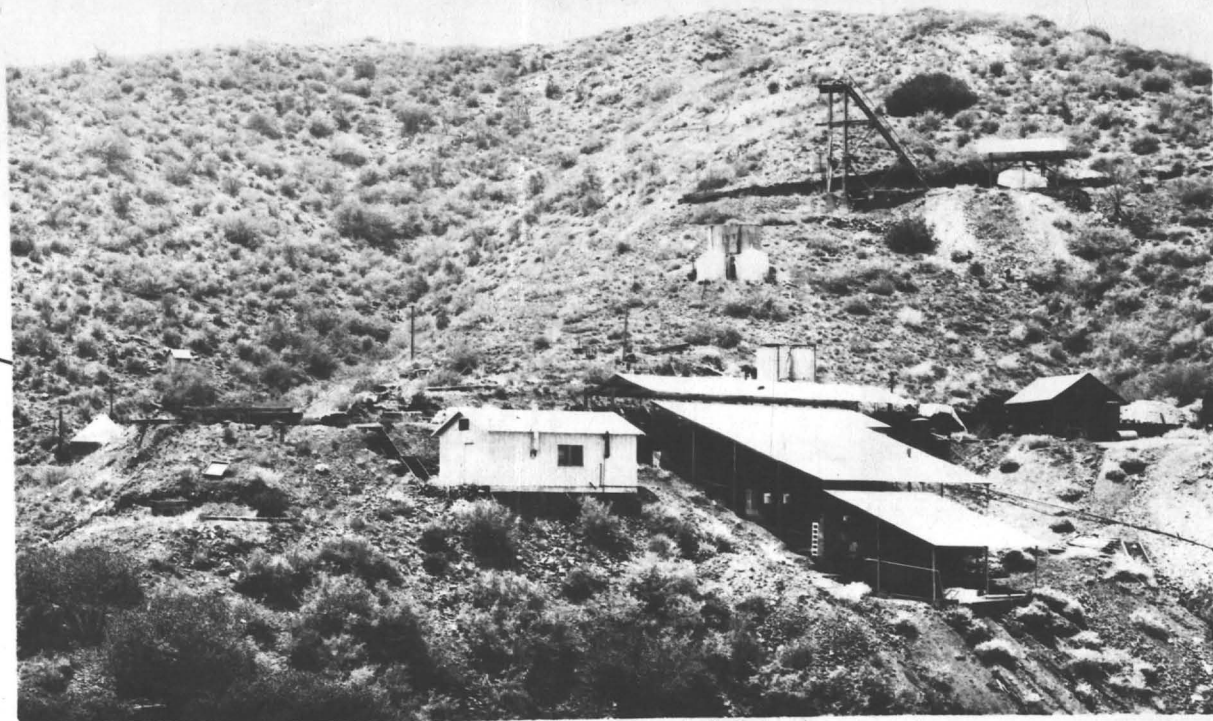
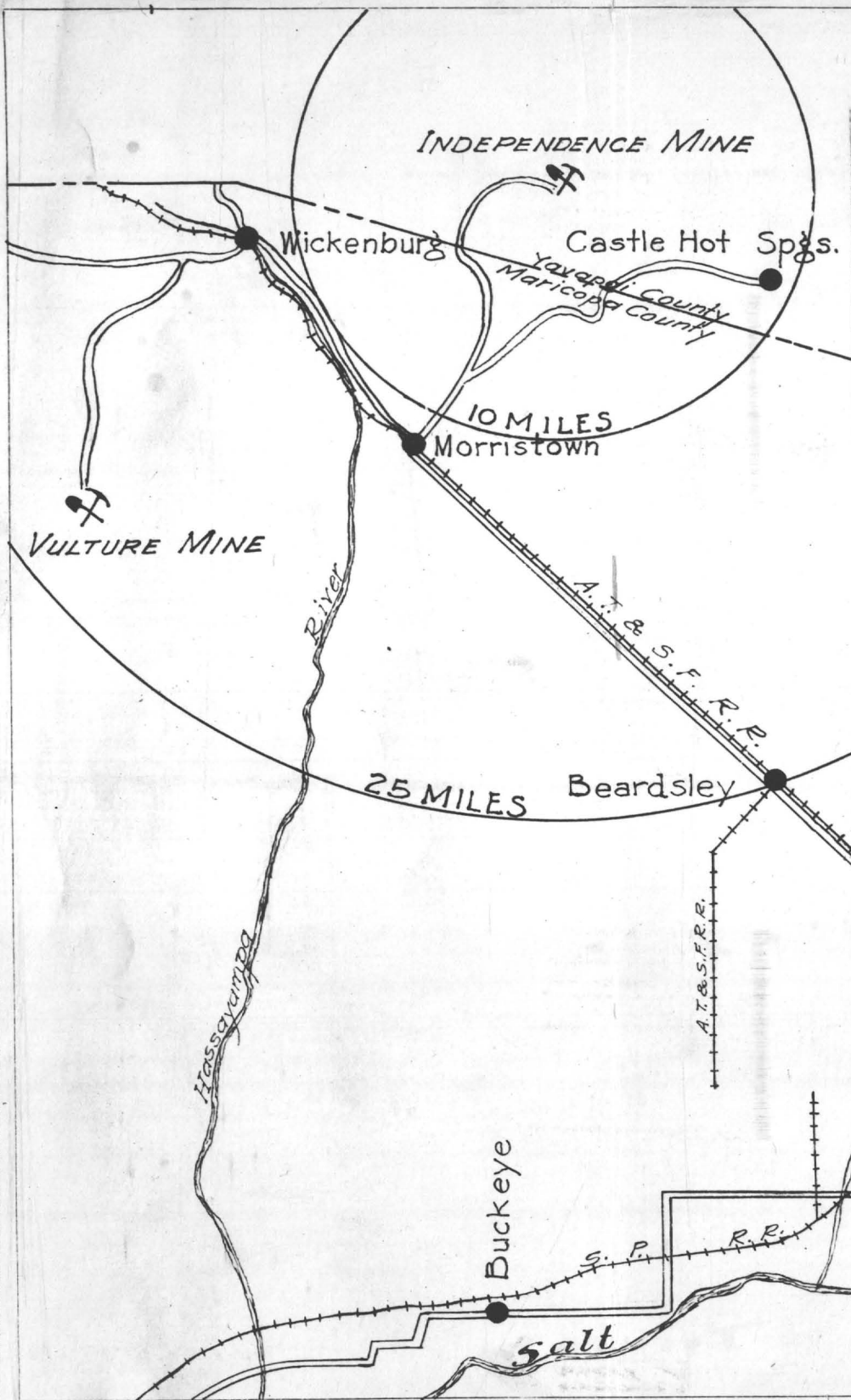
MILL

DIKE

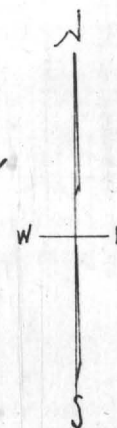
VEIN

RAND VEIN

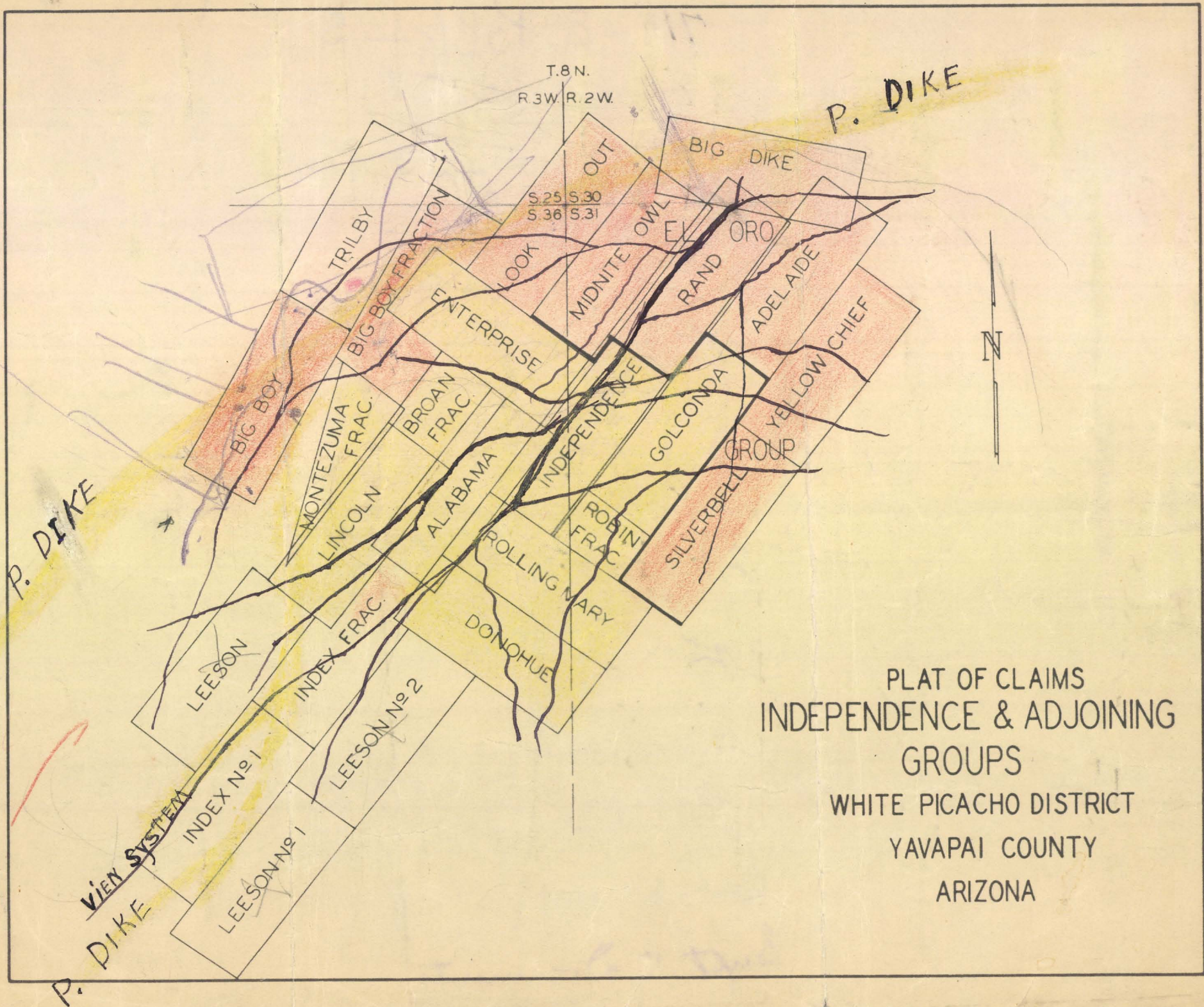
RAND VEIN



INDEPENDENCE MINE
Yavapai County, Arizona.



Diorite



714-E, Bdk-5
20 000 25- @ 5000

10 000 50 @ 5000

155-
25-

180

50000

20 50 @ 10000

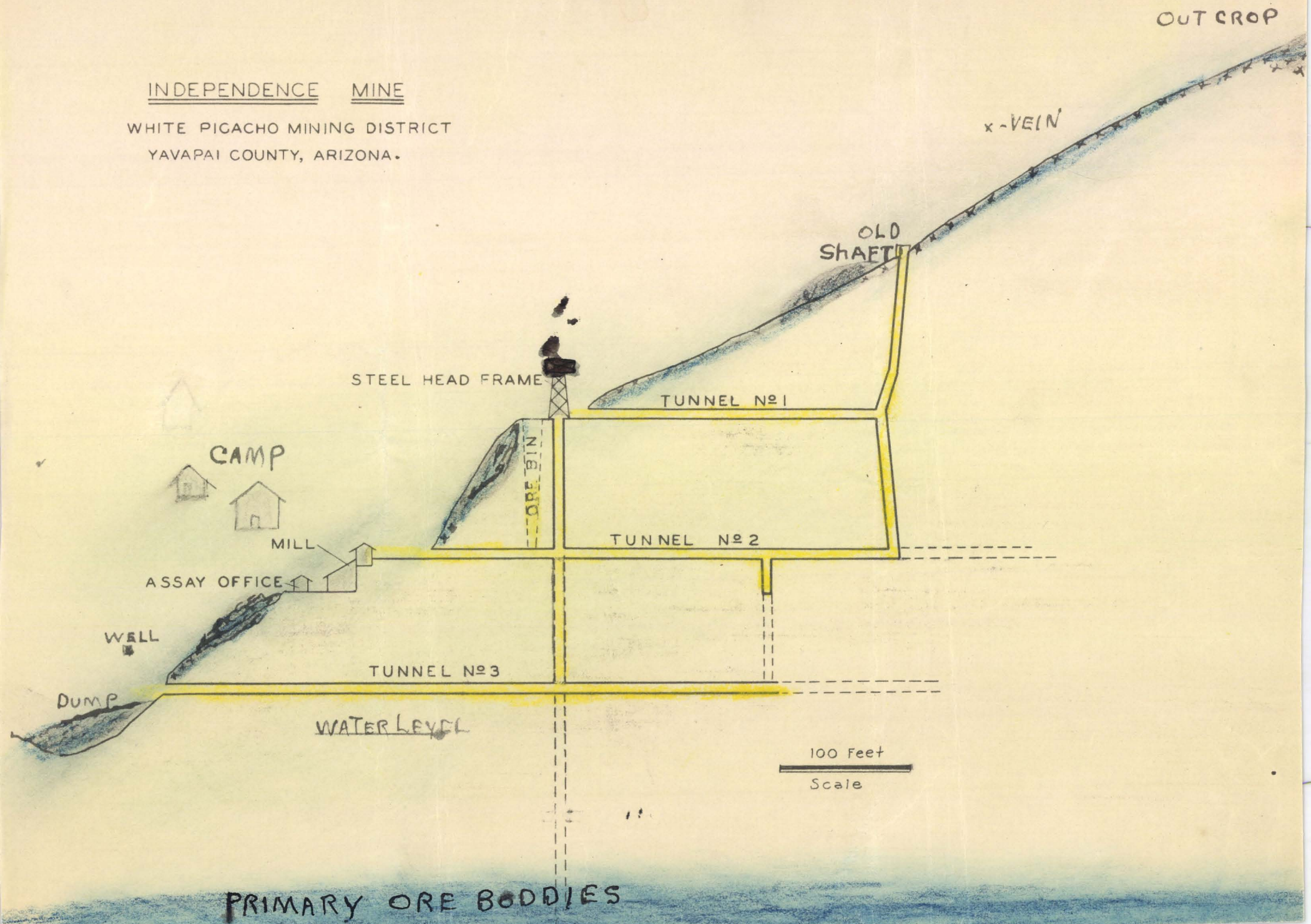
25-

H W. Stevens

University of
Bradley & Bradley
Series Q1927-1903
Bapt. of Documents
made S.C.

INDEPENDENCE MINE

WHITE PICACHO MINING DISTRICT
YAVAPAI COUNTY, ARIZONA.



GEOLOGY: Of this area is Pre-Cambrian schist of a blocky character which has been intruded by large pegmatite dikes, fracturing and slightly throwing the strike and dip of the schist in the immediate vicinity of this property.

The main vein on the claims is along a sheared zone of a large fissure filled with a mineralized porphyry, replaced in chutes with calc-spar and quartz. The fissure cuts the schist at an angle of about 80 degrees and indicates depth, traceable for miles; the mineralization took place in and near the intrusives forming deep-seated reservoirs of ore.

DEVELOPMENT: The Independence Mine has about 1500 feet of tunnel and shaft work and 30,000 tons of ore blocked out which will run about \$12.00 per ton gold, silver and lead, a 50 ton mill, assay office, steel head-frame and hoist, good well and a well-equipped camp.

On account of shortage of water in well cannot operate mill; by sinking shaft 250 feet sufficient water will be developed to operate mill. This development work is necessary to keep the ore blocked out ahead and have a place for your men to work. Cut a station at No.4 level and drift on No.5 450 feet, then run a 100 foot cross-cut, this will put you under the apex; this will block out an additional 50,000 tons of commercial ore.

It is estimated that this development work will cost about \$15,000, and will increase the value of this property, this has been recommended by some of this state's ablest Mining Engineers, the late Charles M. Donohue, Kirby Thomas, Arthur Murphy, Henry Willard and I. A. Ettlinger. Yavapai County has a record of \$500,000,000 in gold, silver, lead and copper. See U.S. Geological Survey, Washington, D.C.

