



CONTACT INFORMATION
Mining Records Curator
Arizona Geological Survey
3550 N. Central Ave, 2nd floor
Phoenix, AZ, 85012
602-771-1601
<http://www.azgs.az.gov>
inquiries@azgs.az.gov

The following file is part of the G. M. Colvocoresses Mining Collection

ACCESS STATEMENT

These digitized collections are accessible for purposes of education and research. We have indicated what we know about copyright and rights of privacy, publicity, or trademark. Due to the nature of archival collections, we are not always able to identify this information. We are eager to hear from any rights owners, so that we may obtain accurate information. Upon request, we will remove material from public view while we address a rights issue.

CONSTRAINTS STATEMENT

The Arizona Geological Survey does not claim to control all rights for all materials in its collection. These rights include, but are not limited to: copyright, privacy rights, and cultural protection rights. The User hereby assumes all responsibility for obtaining any rights to use the material in excess of "fair use."

The Survey makes no intellectual property claims to the products created by individual authors in the manuscript collections, except when the author deeded those rights to the Survey or when those authors were employed by the State of Arizona and created intellectual products as a function of their official duties. The Survey does maintain property rights to the physical and digital representations of the works.

QUALITY STATEMENT

The Arizona Geological Survey is not responsible for the accuracy of the records, information, or opinions that may be contained in the files. The Survey collects, catalogs, and archives data on mineral properties regardless of its views of the veracity or accuracy of those data.

ASSAY PLAT OF
865 X-CUT
10-Scale

© sta. 10

Sludge		Core		Grabs		Cut	
From	To	% Cu	From	To	% Cu	From	To
0 - 5	0.73	0 - 5	---				
		5 - 6	4.10				
5 - 10	1.01						
10 - 15	0.20	6 - 17	0.42				
15 - 20	0.47						
20 - 25	0.81	17 - 27	0.74				
25 - 30	0.74						
30 - 35	0.35	27 - 40	Tr				
35 - 40	1.23						
40 - 45	1.10	40 - 44	1.32	40 - 44	2.63		
45 - 50	2.18	44 - 48	1.50	44 - 47	3.40	43 - 48	1.76
		48 - 50	2.40	47 - 51	3.37	48 - 53	3.33
50 - 55	0.81	50 - 56	0.71	51 - 54	2.88		
				54 - 57	1.90	53 - 58	1.47
55 - 60	1.93			57 - 60	1.90	58 - 63	1.45
		56 - 65	3.50				
60 - 65	2.34			60 - 64	2.34		
				64 - 67		63 - 68	1.08
65 - 70	0.21	65 - 74	0.58	67 - 70			

o ← { Begin of 865
X-C., & Collar
of D.O. Hotel No 1.

Cut

1.45

0.85

2.11

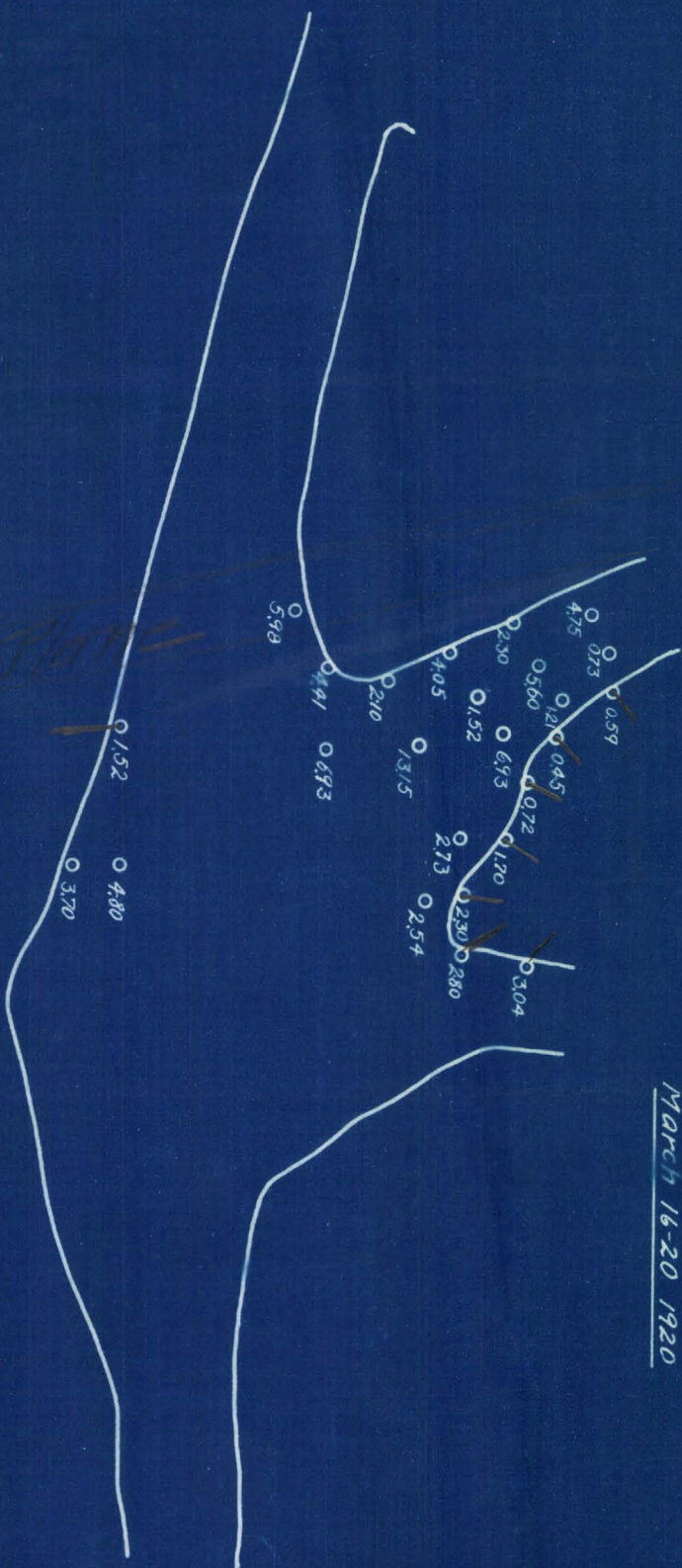
1.96

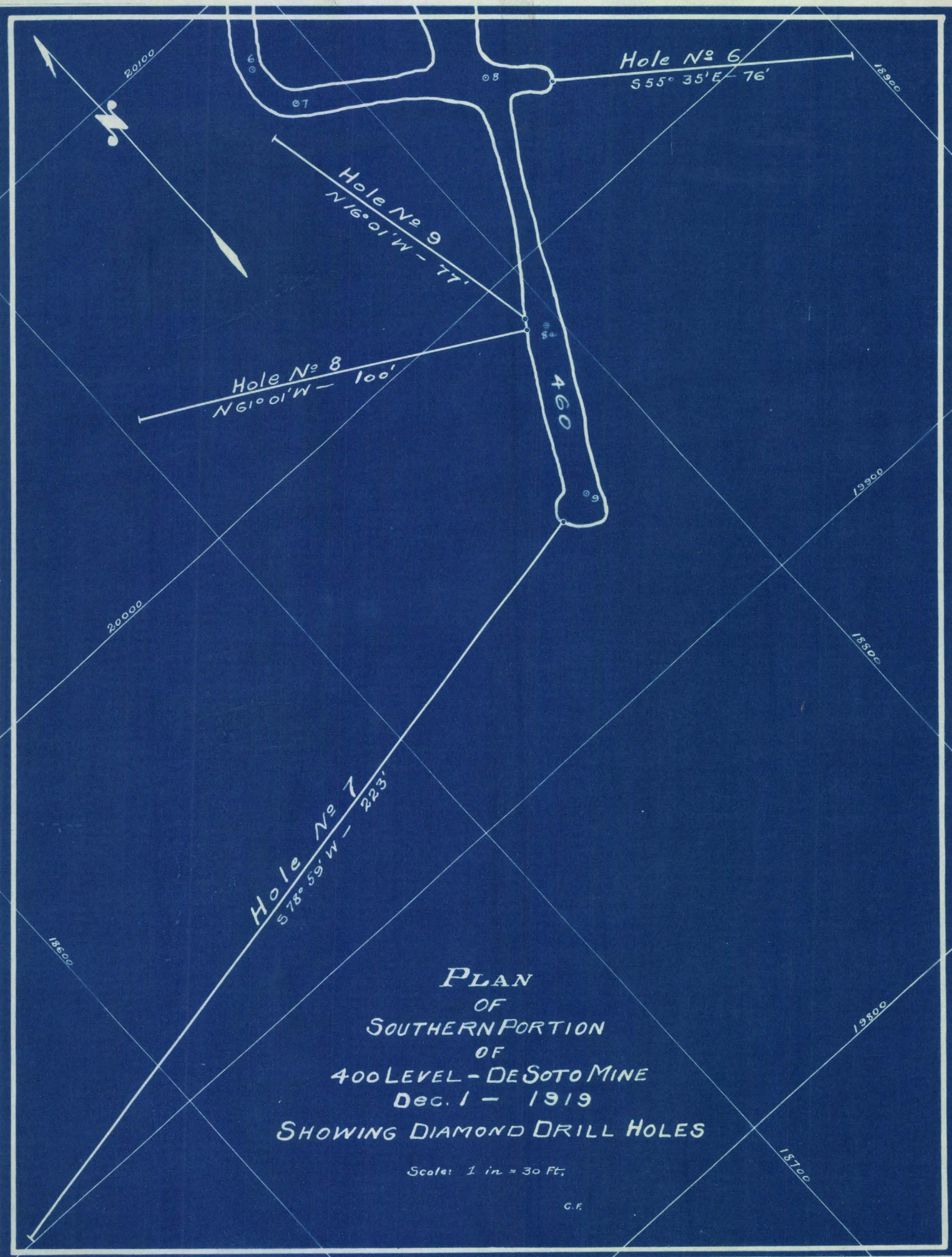
0.89

565 SILL

SHOWING COPPER VALUES
OF DRILL HOLE SAMPLES

MARCH 16-20 1920





Main Adit

From To

0-7' Light Chloritic Schist & Quartz.

7-23

Aluminum Schist

23-49

Chloritic Schist, with occasional bunches of small seams pyrite

49-61

Silicified Chloritic Schist, & Qtz Stringers

61-70

Decomposed Qtz and Schist; (Water-course?)

70-73

Highly Silicified Chloritic Schist, some "Bony" Qtz.

73-102

Latite Porphyry

102-111

Highly Silicified Chloritic Schist, with bunches of pure Qtz.

% Cu

Samples Ran From N.1 to 0.19%

Hole No 11 - 111 Ft.

% Cu

From To
24 to 26' -
18 to 24' -
10 to 18' -
6 to 10' -
0 to 6' -

Samples Ran N.1 to 0.50%

Hole No 12

Material

Black Hornblende Schist, Knapfined Chloritic Schist & Qtz.

Hornblende Schist

Chlor Schist & Qtz, Broken up. Chloritic Schist & Qtz; Oxidized

92 Ft.

Material

Latite Porphyry

Silicified Chloritic Schist

Latite Porphyry

Highly Silicified Light Schist

Silicified Chloritic Schist, with bunches of Qtz; occasional trace of Cu Fe S₂

Light Barren Silicious Schist, Altered from Chloritic Schist.

Silicious Chloritic Schist

Light Silicious Chloritic Schist, with considerable

White Qtz; Broken Ground.

LOGS

OF DRILL HOLES NOS

11, 12, And 13.

Whale workings

De Soto Mine

Dec. - 1919

Scale: 1 in = 30 ft.

C.F.

Drillings Show Considerable Mineral -

1' Mixed Qtz + Ore - No Assay as yet
5' Sample No. 1 - 4.25%
5' Sample No. 2 - 1.60%
5' Sample No. 3 - 1.59%

5' - 3.82%
5' - 5.78%
5' - 5.78%
5' - 1.76%

395-X

© 148

340 "New"

© 147a

360

320
And
330

330 Sill

340

375+

350

SKETCH
OF PORTION OF
300 LEVEL
DE SOTO MINE
SHOWING RECENT WORK
Jan. 4-1920
30 Scale



LOG
OF DRILLHOLE No 7
400 LEVEL-DE SOTO MINE
Nov. 1919
Scale 1 in. = 30 Ft.

Hole No 9
 N 16° 01' W - 77'

Hole No 8
 N 6° 01' W - 100'

From-To	% Cu	Material
0-20'		Light Siliceous Schist
20-35'		Hornblende Schist
35-38'		Dark Siliceous Schist; Consid. Qtz
38-96'		Barren Hornblende Schist Occasional Stringers of Qtz, and a sparse Scattering of Marcasite -

All Samples Ran From

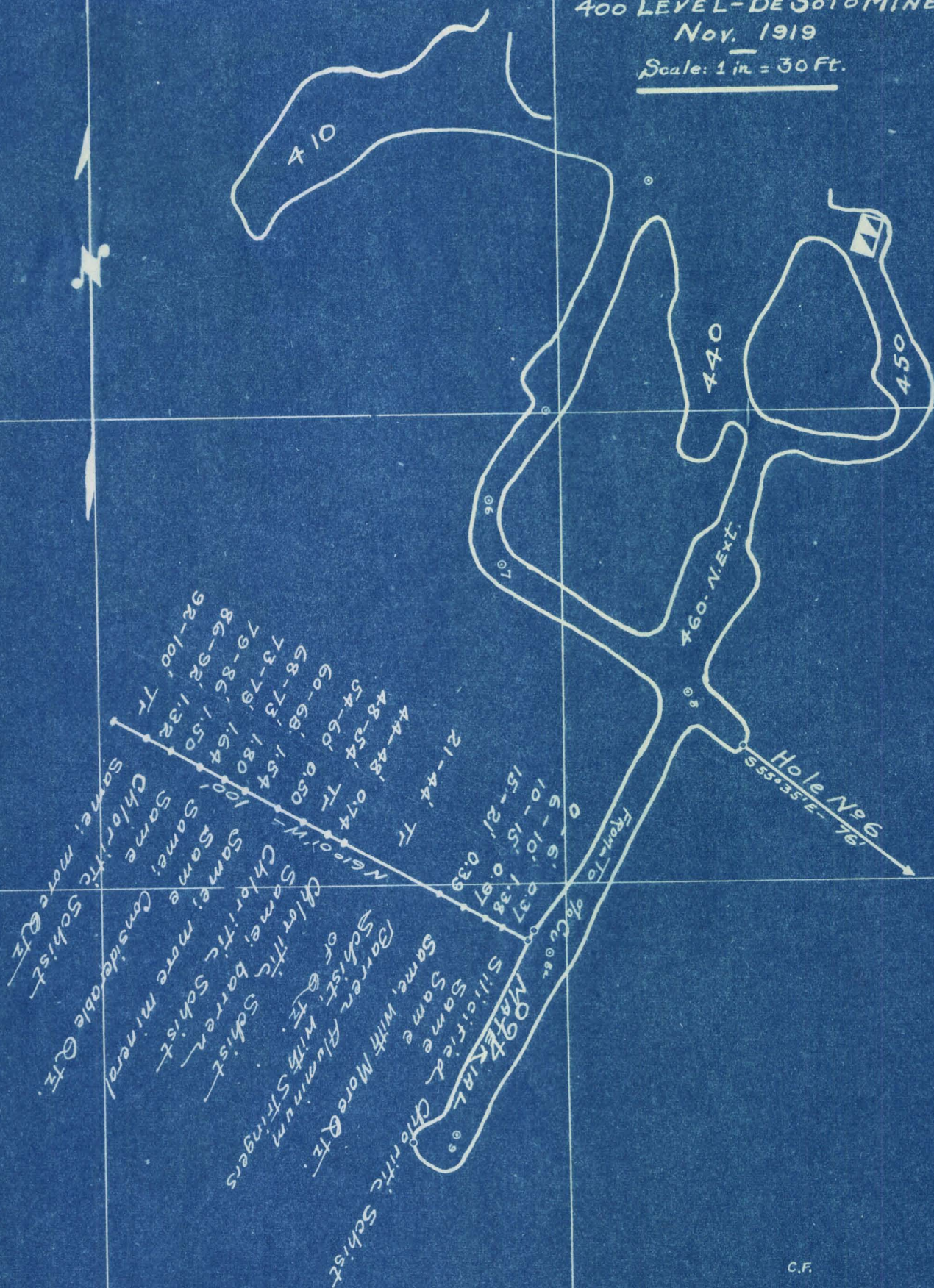
96-155' 578.59' W. - 223' "N 1° 1' to "Trace"

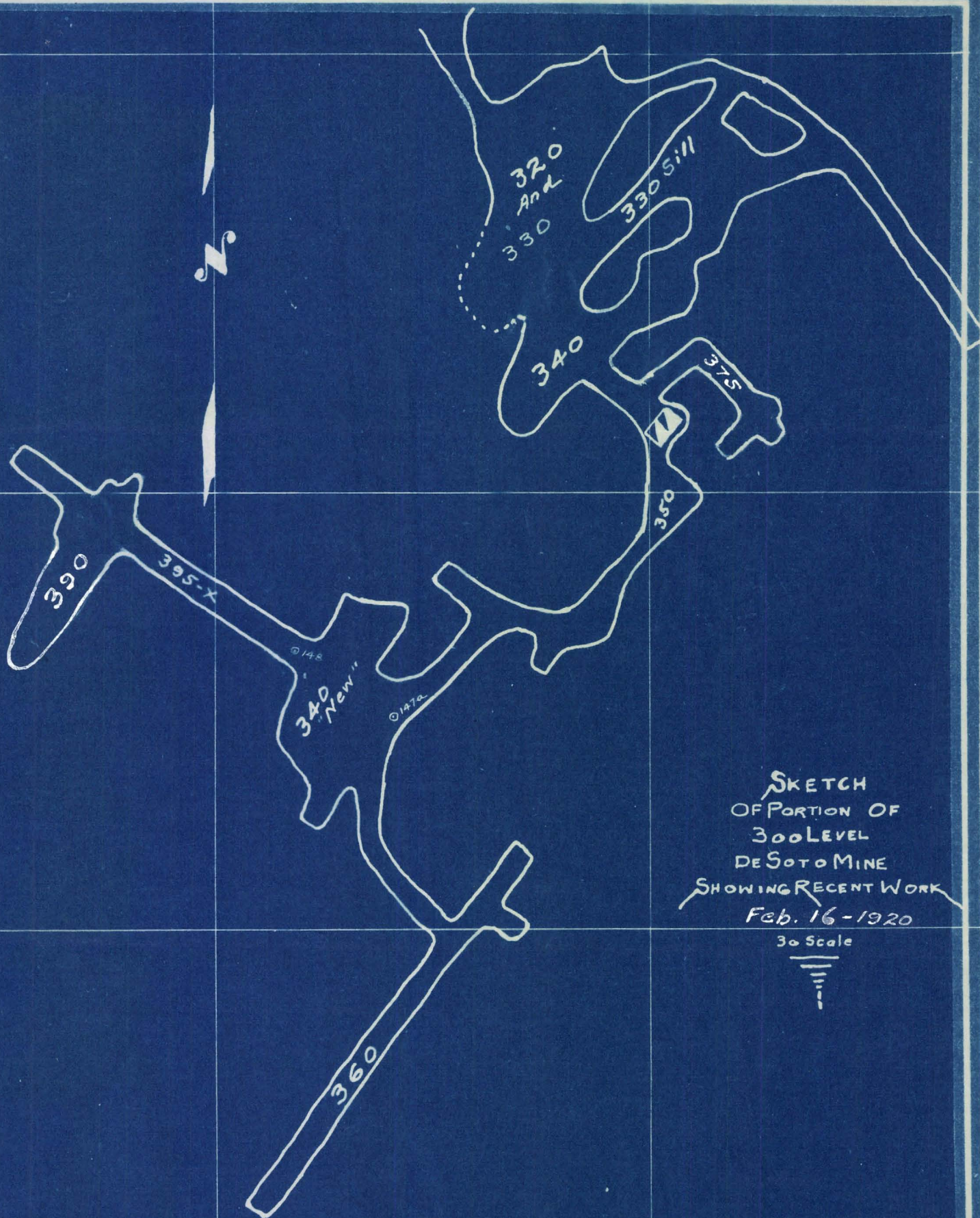
Same: Schist somewhat
 darker (more hornblende), with
 more Qtz.

155-157'	Bluish Siliceous Schist
157-172'	Light Siliceous Schist; Decomposed; Consid. gouge-like Material, giving no core -
172-177'	Lt. Siliceous Schist; Broken up -
177-185'	Same: Consid. bl "Glassy" Qtz -
185-197'	Decomposed Schist and "Bony" Qtz; Broken up -
197-207'	Same: Very little Core -
207-223'	Mixed Schist and Qtz; Badly Broken up -

Note: The Main Fault was probably encountered at about 157' -
 Altho there is a perceptible air current thru this Hole, the Drill Water was returned from the end.

Log
OF DRILLHOLE No 8
400 LEVEL-DE SOTO MINE
Nov. 1919
Scale: 1 in. = 30 Ft.

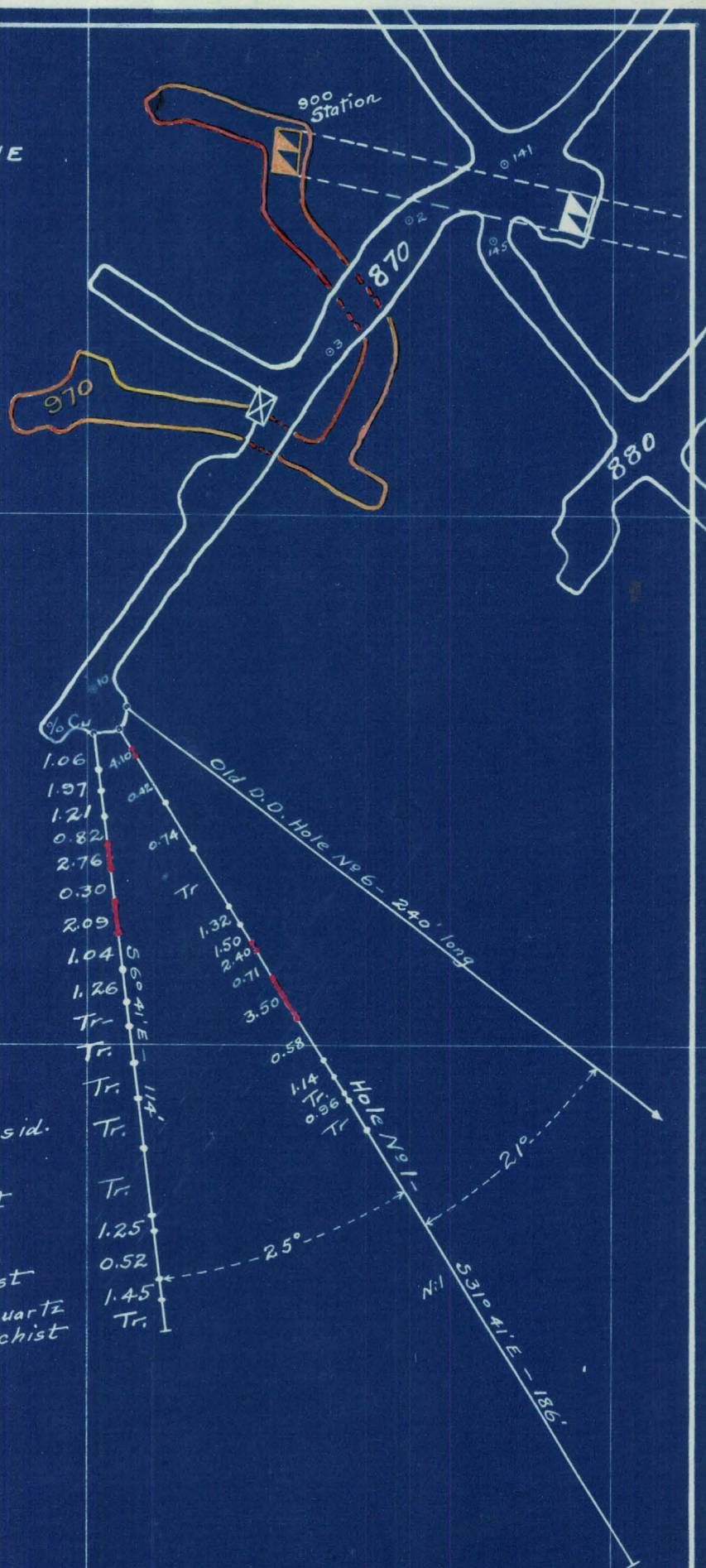




SKETCH
OF PORTION OF
300 LEVEL
DE SOTO MINE
SHOWING RECENT WORK
Feb. 16-1920
30 Scale

Scale 1 in = 30 Ft.

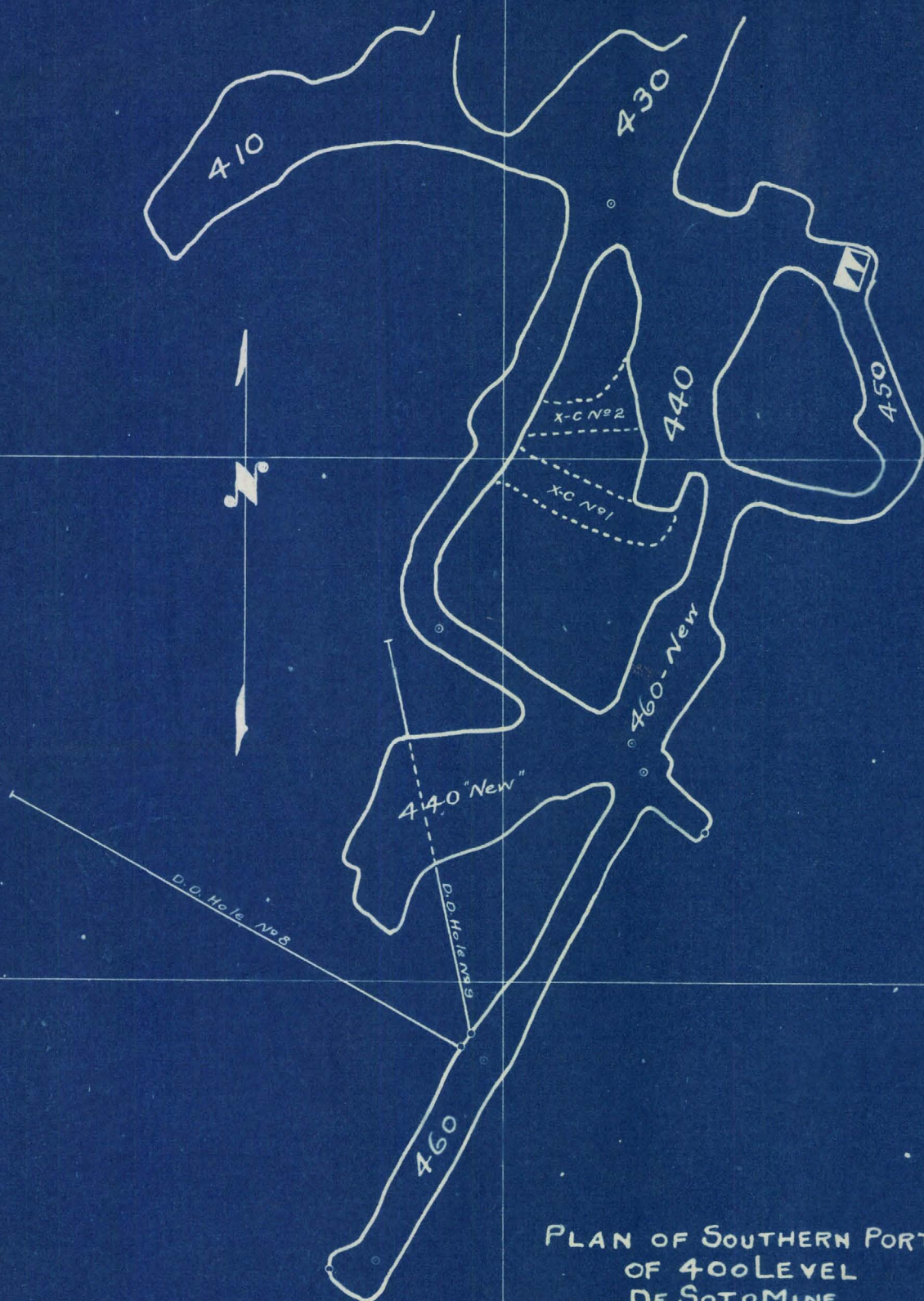
Scale 1 in = 30 Ft.



LOG

MATERIAL

FROM-TO	MAPE	
0 - 7'	Light Alum. Schist	1.0
7 - 11'	Chloritic Schist	1.2
11 - 16'	Same	0.
16 - 21'	Same	2
21 - 26'	Same + Consid. Hornblende	0
26 - 32'	Same + Considerable Qtz	2
32 - 38'	Chloritic Schist & Qtz	1
38 - 45'	Hornblende Schist	
45 - 51'	Chloritic Schist & Qtz	
51 - 56'	Light Schist & Qtz	
56 - 63'	Lt. Hornblende Schist & Qtz	
63 - 70'	Same	
70 - 79'	Chloritic Schist + Consid. White Quartz.	
79 - 92'	Gray Hornblende Schist	
92 - 95'	Chloritic Schist	
95 - 104'	Light Aluminum Schist	
104 - 108'	Chloritic Schist & Quartz	
108 - 114'	Decomposed Chloritic Schist	

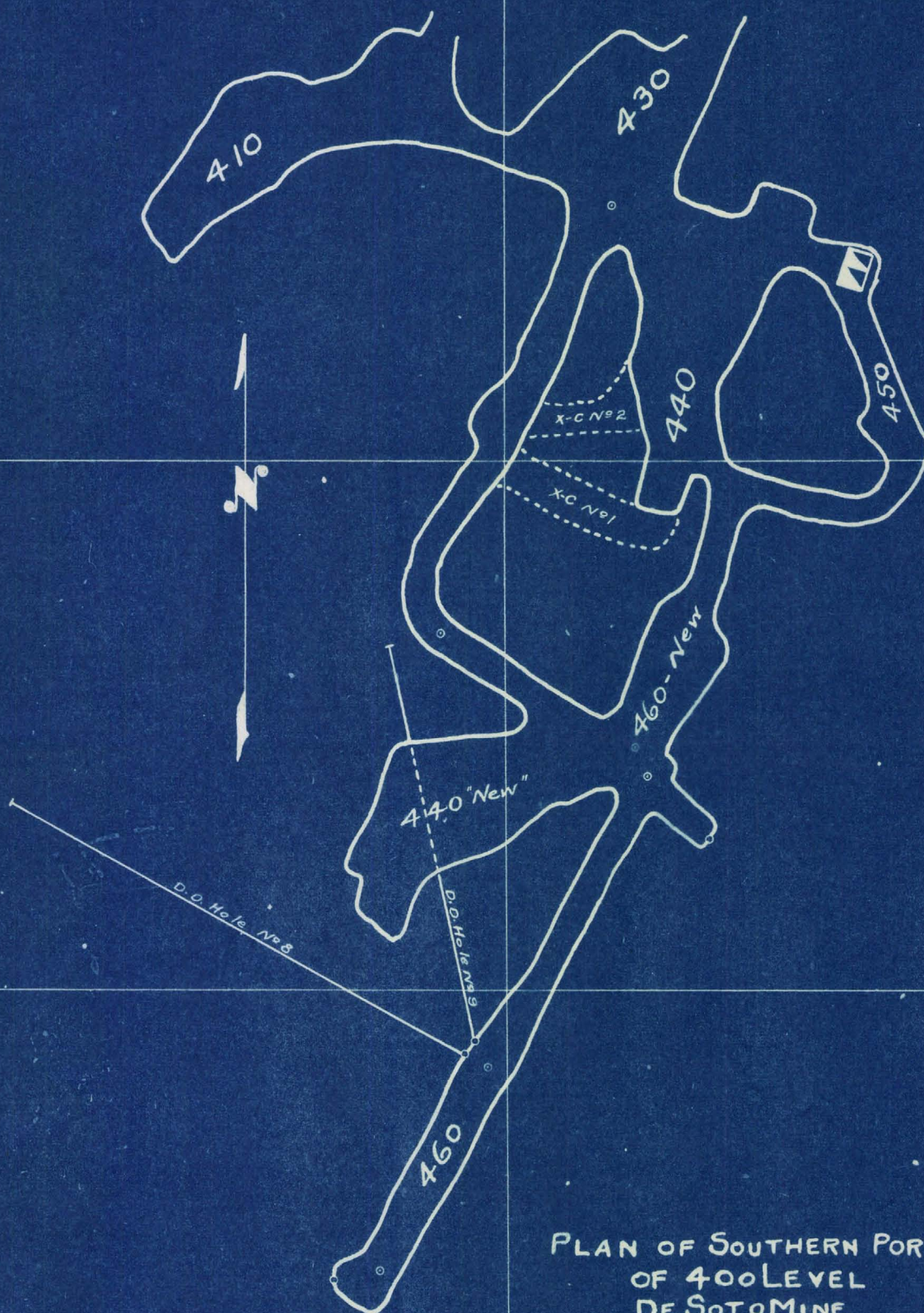


PLAN OF SOUTHERN PORTION
OF 400 LEVEL
DE SOTO MINE

SHOWING RECENT WORK

Feb. 1 - 1920

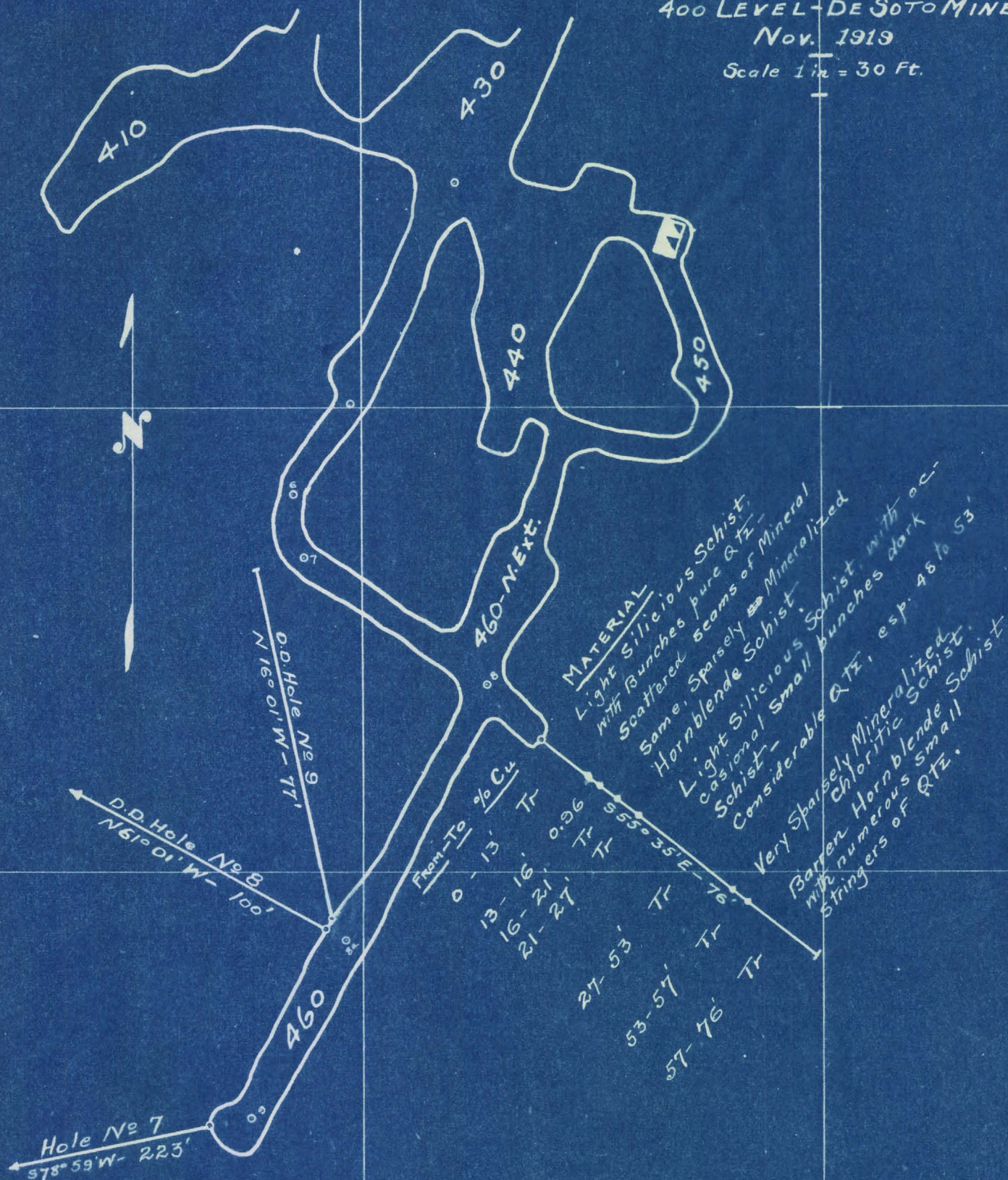
Scale: 1 in. = 30 Ft.



PLAN OF SOUTHERN PORTION
OF 400 LEVEL
DE SOTO MINE
SHOWING RECENT WORK
Feb. 1 - 1920

Scale: 1 in. = 30 Ft.

LOG
OF DRILLHOLE N°6
400 LEVEL-DE SOTO MINE
Nov. 1919
 Scale 1 in = 30 Ft.



Cutlass Exploration works in Arizona



Westward

The Prescott Courier's Weekly Feature Magazine

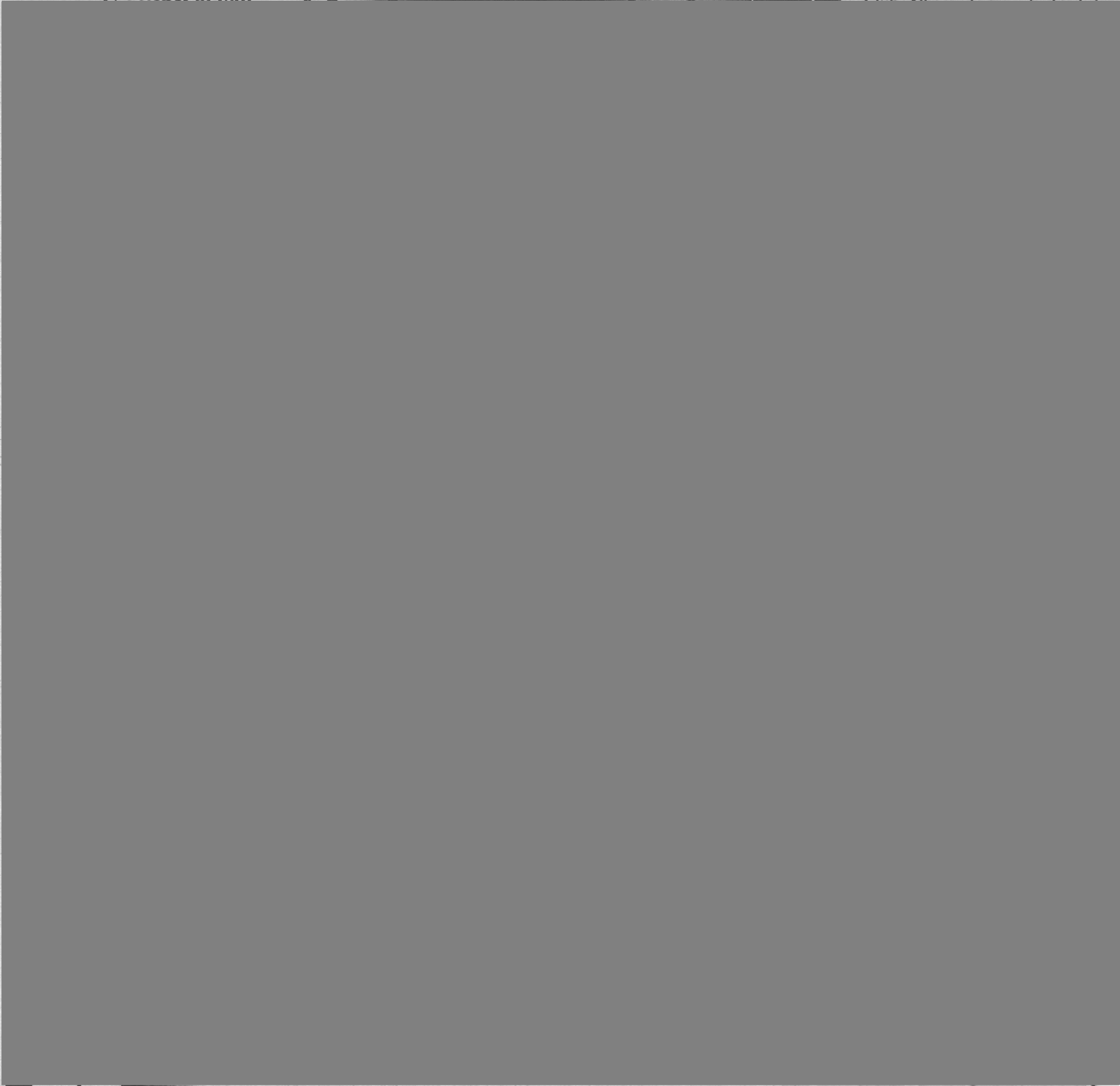
October 9, 1981

Vol. 8 No. 40

25 Cents

On
10/15/81

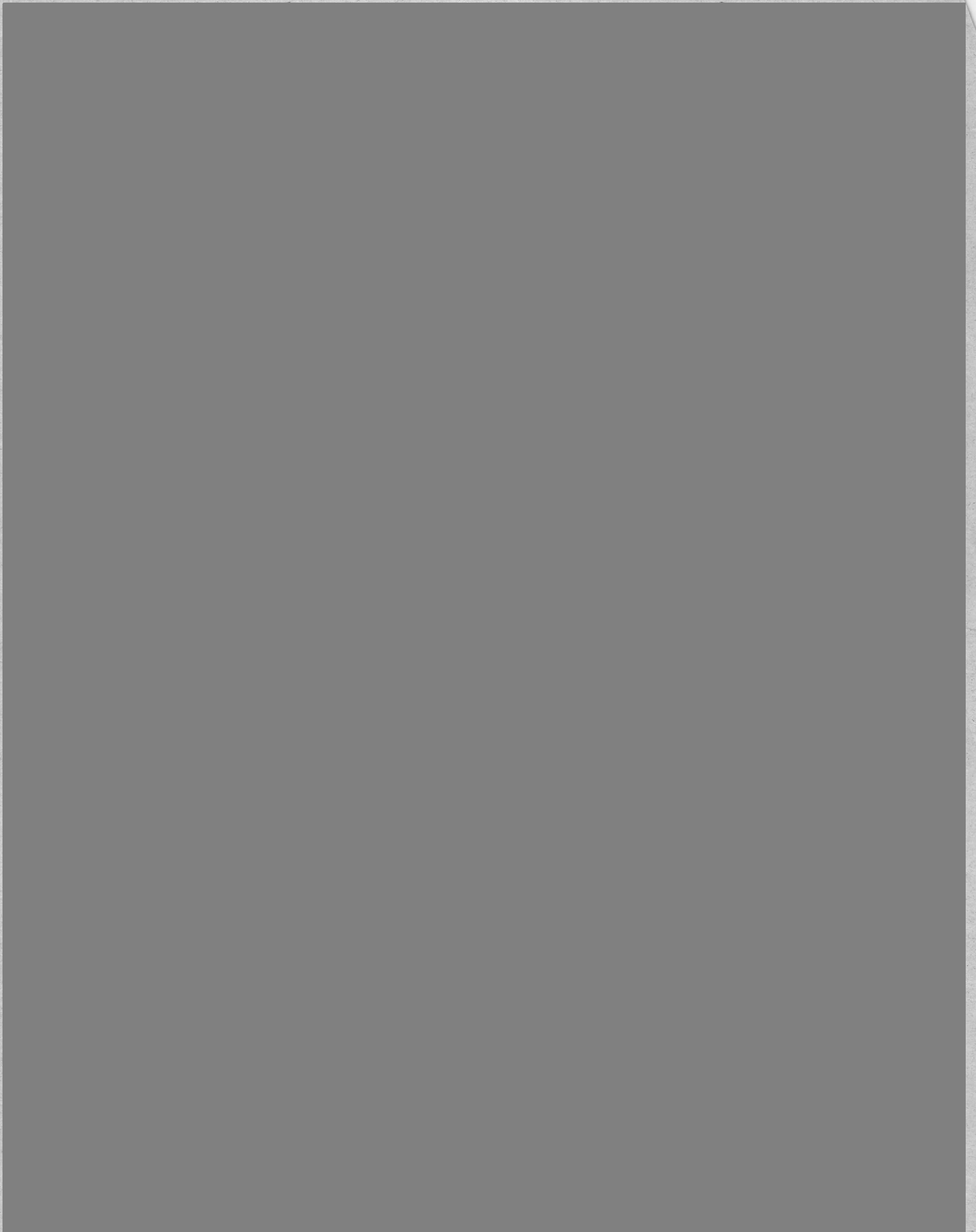
Includes television listings for October 10 through October 16



Westward

Westward is a list of...





View of Bradshaw Mountains from the mine

Friday, October 9, 1981 — 3



The Art Of Inner Seeing

**George Lovgren Writes
And Talks About How
Imagination Keeps
People Mentally Healthy**

By Barbara Sjostrom

