



CONTACT INFORMATION  
Mining Records Curator  
Arizona Geological Survey  
3550 N. Central Ave, 2nd floor  
Phoenix, AZ, 85012  
602-771-1601  
<http://www.azgs.az.gov>  
[inquiries@azgs.az.gov](mailto:inquiries@azgs.az.gov)

The following file is part of the Edwin Noel Pennebaker Mining Collection

### **ACCESS STATEMENT**

These digitized collections are accessible for purposes of education and research. We have indicated what we know about copyright and rights of privacy, publicity, or trademark. Due to the nature of archival collections, we are not always able to identify this information. We are eager to hear from any rights owners, so that we may obtain accurate information. Upon request, we will remove material from public view while we address a rights issue.

### **CONSTRAINTS STATEMENT**

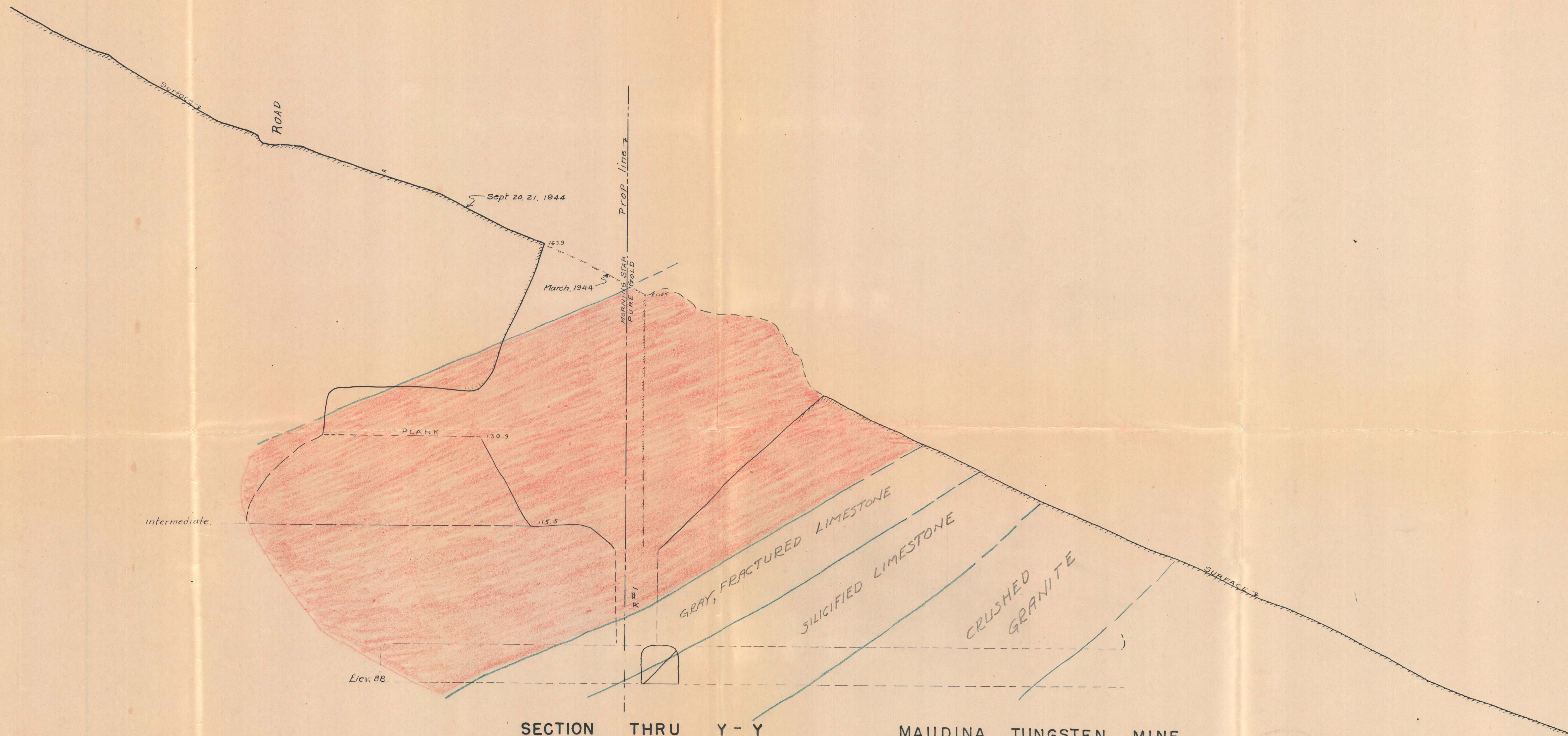
The Arizona Geological Survey does not claim to control all rights for all materials in its collection. These rights include, but are not limited to: copyright, privacy rights, and cultural protection rights. The User hereby assumes all responsibility for obtaining any rights to use the material in excess of "fair use."

The Survey makes no intellectual property claims to the products created by individual authors in the manuscript collections, except when the author deeded those rights to the Survey or when those authors were employed by the State of Arizona and created intellectual products as a function of their official duties. The Survey does maintain property rights to the physical and digital representations of the works.

### **QUALITY STATEMENT**

The Arizona Geological Survey is not responsible for the accuracy of the records, information, or opinions that may be contained in the files. The Survey collects, catalogs, and archives data on mineral properties regardless of its views of the veracity or accuracy of those data.





SECTION THRU Y - Y

SCALE 1" = 10'

SEPT. 20-21, 1944

MAUDINA TUNGSTEN MINE  
CAMPO BONITO MINES INC.  
OLD HAT MINING DISTRICT

*J. N. Stevens*

Reg. Engr.









E.H. Molson Copy  
2nd Draft

Parallel Pure Gold End Lines  
N23°36'E

Parallel Morning Star End Lines  
N10°W

Main

Should these  
Lines be  
Removed?

Should this line be  
Moved from here  
To here?

VERTICAL SECTION A-B

LOOKING EAST

1 in. = 10 ft.

Use Stevens Section  
A-B (after it has  
been corrected)  
in place of  
this -

PURE GOLD CLAIM  
MORNING STAR CLAIM  
HANGING WALL  
FOOTWALL

Side-Line Bears  
East-West

PURE GOLD CLAIM  
MORNING STAR CLAIM

Use same term  
as that on  
U.S.G.S. Map

LIMESTONE  
Hanging Tunnel

SILICIFIED  
MAGNIF. FAULT

Extend the  
MAGNIF. FAULT

BEAR TRENCHED

COVERED BY SOIL

OPEN PIT PERIMETER  
ON MARCH 26, 1944

263.24 ft West from  
Iron Pipe

214.87 ft West from  
Corner No. 4 of  
Pure Gold Claim

Strike  
Line

1 in. = 10 ft.

N

DETAILED VIEW  
RELATION OF VEIN TO SIDE-LINE

GENERAL VIEW  
RELATION OF VEIN TO SIDE-LINE

PURE GOLD  
MORNING STAR

East-West

N10°W

N23°36'E

Remove  
these  
Lines?

1 in. = 200 ft.



