



CONTACT INFORMATION  
Mining Records Curator  
Arizona Geological Survey  
3550 N. Central Ave, 2nd floor  
Phoenix, AZ, 85012  
602-771-1601  
<http://www.azgs.az.gov>  
[inquiries@azgs.az.gov](mailto:inquiries@azgs.az.gov)

The following file is part of the Edwin Noel Pennebaker Mining Collection

### **ACCESS STATEMENT**

These digitized collections are accessible for purposes of education and research. We have indicated what we know about copyright and rights of privacy, publicity, or trademark. Due to the nature of archival collections, we are not always able to identify this information. We are eager to hear from any rights owners, so that we may obtain accurate information. Upon request, we will remove material from public view while we address a rights issue.

### **CONSTRAINTS STATEMENT**

The Arizona Geological Survey does not claim to control all rights for all materials in its collection. These rights include, but are not limited to: copyright, privacy rights, and cultural protection rights. The User hereby assumes all responsibility for obtaining any rights to use the material in excess of "fair use."

The Survey makes no intellectual property claims to the products created by individual authors in the manuscript collections, except when the author deeded those rights to the Survey or when those authors were employed by the State of Arizona and created intellectual products as a function of their official duties. The Survey does maintain property rights to the physical and digital representations of the works.

### **QUALITY STATEMENT**

The Arizona Geological Survey is not responsible for the accuracy of the records, information, or opinions that may be contained in the files. The Survey collects, catalogs, and archives data on mineral properties regardless of its views of the veracity or accuracy of those data.

January 31, 1963

Mr. Paul C. Henshaw  
Vice President, Exploration  
Homestake Mining Company  
100 Bush Street  
San Francisco 4, California

Dear Paul:

Re: Virginia City Mining Co. Claims  
Maricopa County, Arizona

On January 30, 1963, I made a brief inspection of part of the unpatented mining claims controlled by Virginia City Mining Company. This ground was brought to my attention by Howard Twitty, the attorney whom you met in Scottsdale. Mr. Twitty was an old friend of the late "Rip" Borden, well-known tax attorney and god-father of "Economics of the Mineral Industries" published by AIME. Borden and several of his friends, including Jim Bradley of San Francisco, control this property. My inspection was made as a matter of courtesy to these people as well as to look over a region that has been given considerable attention in the past few years.

I neglected to discuss this examination when we met in Reno last week, but I did mention it to Breck Parker.

The area of present interest lies in Sections 21 and 22, T7N, R3W, Gila and Salt River Base and Meridian. It is about 6 miles NNE of Morristown, a mile south of the Yavapai County Line. The mineral holdings cover about 15 sections and are mostly placer claims. Five lode claims control copper showings. About 15 miles farther north (in Yavapai County) a large group of lode claims is in a pegmatite area.

The region is one of schist intruded by Precambrian granite and cut by numerous pegmatite dikes. Parts of it are covered by Cretaceous andesite, and the granite is intruded by sills and dikes of a dark, andesitic-appearing rock. To the south the region is masked by sand and gravel, tongues of which extend up the present gulches.

The mineral showings are of four kinds, as follows:

1. Copper. Small showings of oxidized copper minerals occur in Section 21. These are localized where the granite is cut by an inclined sill of andesite, and they make a modest showing where exposed on a dip-slope. Although a few small hand-

Mr. Paul C. Henshaw - 2 - January 31, 1963

sorted shipments have been made, the area is small and of little economic importance. The host rock presents none of the characteristics of the porphyry copper type.

2. Placer Gold. The gravels to the south carry small and variable amounts of placer gold. Various large scale attempts to work them by dry placer methods have been unsuccessful to date, and the scarcity of water precludes their testing by the usual means. I believe that you looked over similar ground nearby on the south a few years ago. My general impression was not favorable.

3. Gold in Schist. Gold occurs in narrow quartz veins cutting the schist, but these deposits are of little or no economic importance. Gold is also alleged to occur in the upper few inches of schist exposed on the erosion surface. This is supposedly re-distributed placer gold trapped by "natural riffles" formed by the steeply inclined schistose layers. A few dollars in value is said to be widespread but confined to a very few inches below the outcrop surface. These areas are laced by hard pegmatite dikes, and the commercial recovery of this gold is not promising.

4. The pegmatite area on the north was not visited because of the known erratic distribution of the better showings in this region. The pegmatites here are said to contain some euxenite.

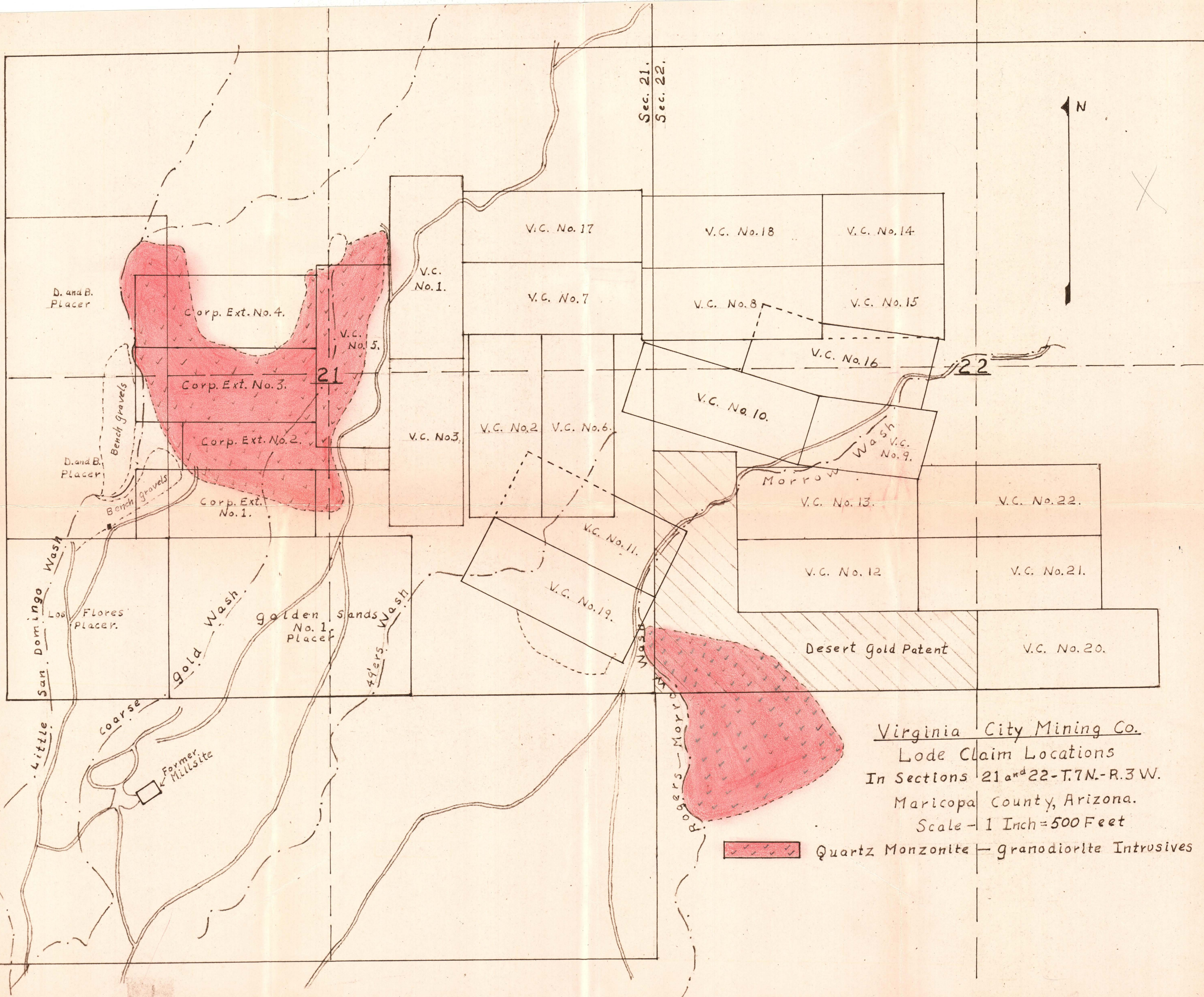
My conclusion is that the claims of the Virginia City Mining Company are of dubious worth.

Yours very truly

E. N. Pennebaker

ENP:mc





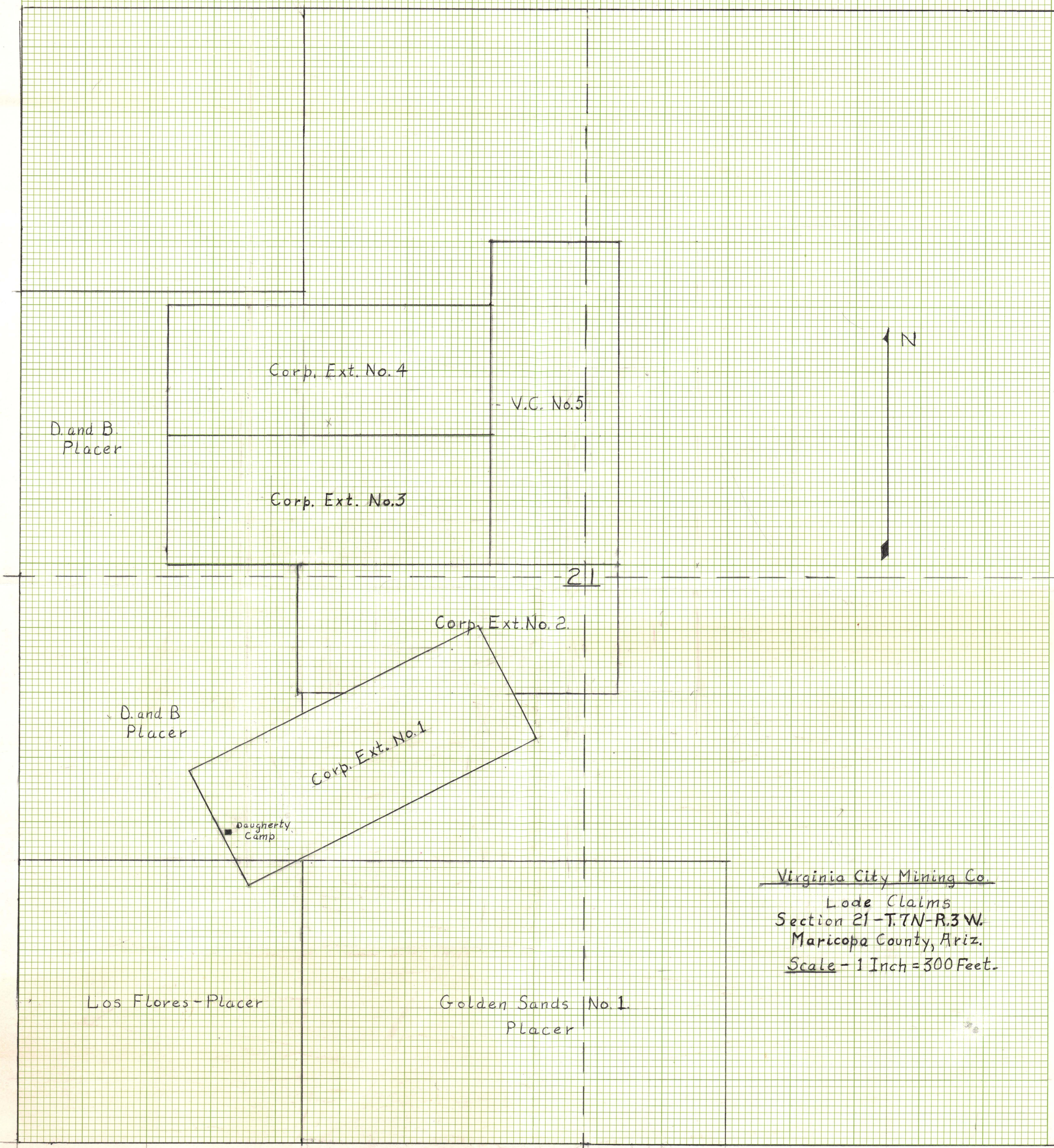
Virginia City Mining Co.  
Lode Claim Locations  
In Sections 21 and 22-T.7N.-R.3W.  
Maricopa County, Arizona.  
Scale-1 Inch=500 Feet

 Quartz Monzonite-granodiorite Intrusives



Orig. Corp. Ext. Map





Virginia City Mining Co.  
Lode Claims  
Section 21 - T.7N-R.3W.  
Maricopa County, Ariz.  
Scale - 1 Inch = 300 Feet.

Los Flores - Placer

Golden Sands No. 1  
Placer

Daugherty  
Camp

Corp. Ext. No. 1

Corp. Ext. No. 2

Corp. Ext. No. 3

Corp. Ext. No. 4

V.C. No. 5

D. and B.  
Placer

D. and B.  
Placer

21

