



## **CONTACT INFORMATION**

Mining Records Curator  
Arizona Geological Survey  
1520 West Adams St.  
Phoenix, AZ 85007  
602-771-1601  
<http://www.azgs.az.gov>  
[inquiries@azgs.az.gov](mailto:inquiries@azgs.az.gov)

The following file is part of the

Arizona Department of Mines and Mineral Resources Mining Collection

## **ACCESS STATEMENT**

These digitized collections are accessible for purposes of education and research. We have indicated what we know about copyright and rights of privacy, publicity, or trademark. Due to the nature of archival collections, we are not always able to identify this information. We are eager to hear from any rights owners, so that we may obtain accurate information. Upon request, we will remove material from public view while we address a rights issue.

## **CONSTRAINTS STATEMENT**

The Arizona Geological Survey does not claim to control all rights for all materials in its collection. These rights include, but are not limited to: copyright, privacy rights, and cultural protection rights. The User hereby assumes all responsibility for obtaining any rights to use the material in excess of "fair use."

The Survey makes no intellectual property claims to the products created by individual authors in the manuscript collections, except when the author deeded those rights to the Survey or when those authors were employed by the State of Arizona and created intellectual products as a function of their official duties. The Survey does maintain property rights to the physical and digital representations of the works.

## **QUALITY STATEMENT**

The Arizona Geological Survey is not responsible for the accuracy of the records, information, or opinions that may be contained in the files. The Survey collects, catalogs, and archives data on mineral properties regardless of its views of the veracity or accuracy of those data.

PRINTED: 09/12/2002

ARIZONA DEPARTMENT OF MINES AND MINERAL RESOURCES AZMILS DATA

PRIMARY NAME: ZIMMERMAN ASBESTOS POINTS

ALTERNATE NAMES:

IRON KING CLAIMS  
FERRO CLAIMS  
FERROUS CLAIMS

GILA COUNTY MILS NUMBER: 268B

LOCATION: TOWNSHIP 5 N RANGE 14 E SECTION 20 QUARTER S2  
LATITUDE: N 33DEG 45MIN 20SEC LONGITUDE: W 110DEG 56MIN 00SEC  
TOPO MAP NAME: MCFADDEN PEAK - 15 MIN

CURRENT STATUS: EXP PROSPECT

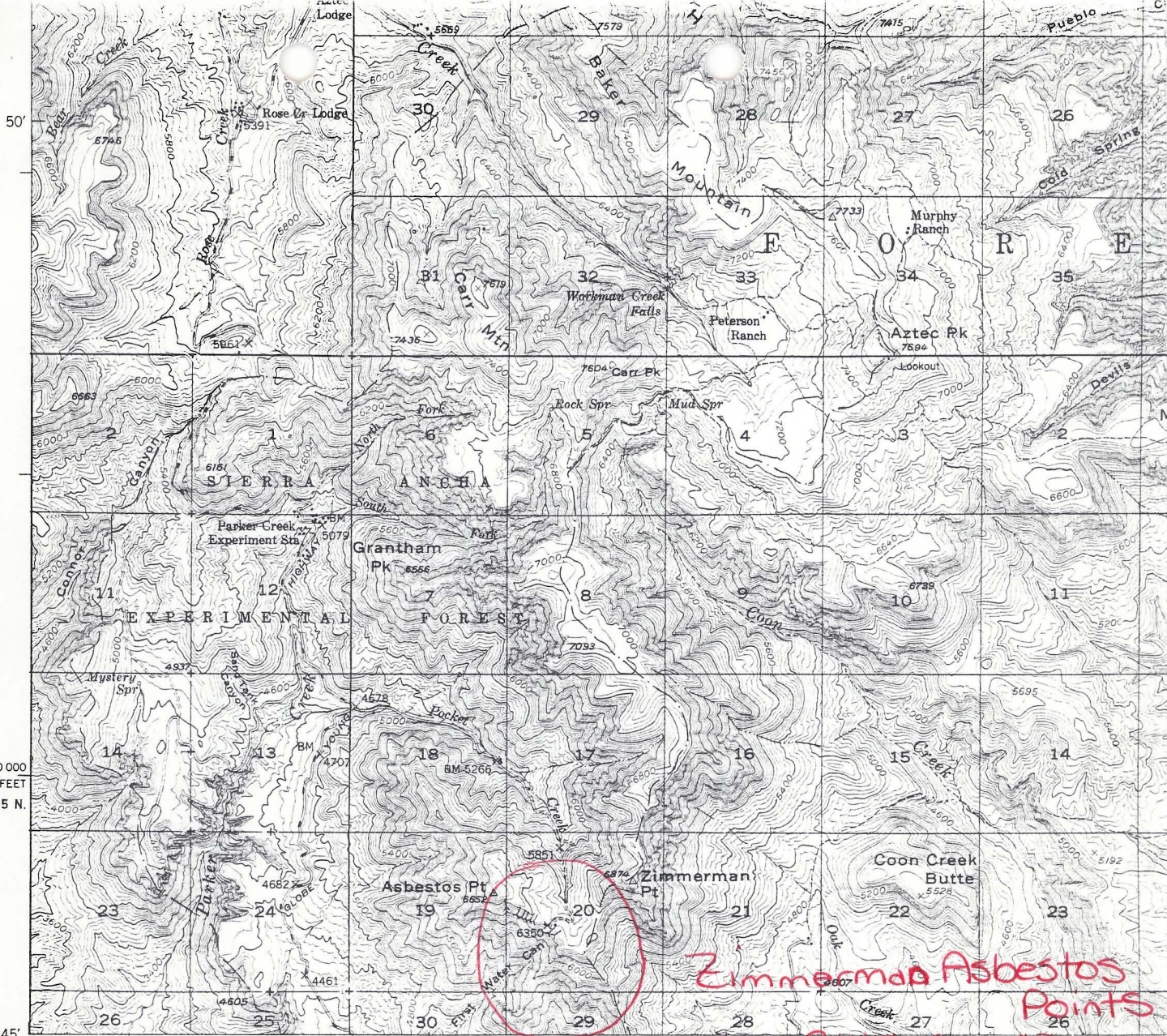
COMMODITY:

IRON HEMATITE

BIBLIOGRAPHY:

ADMMR ZIMMERMAN ASBESTOS POINTS FILE  
HARRER, CM "RECONN OF IRON RES IN AZ" USBM IC  
8236, P 56; 1964  
AZBM BULL 180, "MIN & WATER RES AZ" P 173,176  
CLAIMS EXTEND INTO SEC 21 & 29





1010000  
FEET  
T. 5 N.

33°45' 111°00' R. 13 E. | 250 000 FEET 18 MI. TO ARIZ. 88 GLOBE 36 MI.

Mapped, edited, and published by the Geological Survey

Control by USGS, USC&GS, and USFS

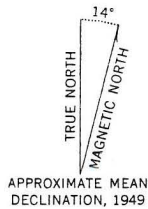
Topography from aerial photographs by multiplex methods

Aerial photographs taken 1947. Field check 1949

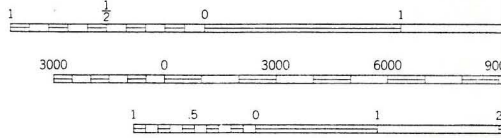
Polyconic projection. 1927 North American datum  
10,000-foot grid based on Arizona coordinate system,  
east zone

Unchecked elevations are shown in brown

(ROOSEVELT)  
1:125 000



Zimmerman Asbestos Points  
T5N R14E Sec. 20 (ROCKINST)



CONTOUR INTERVAL IS MEAN DATUM  
THIS MAP COMPLIES WITH NATIONAL MAP ACT  
FOR SALE BY U. S. GEOLOGICAL SURVEY, FEDERAL CENTER  
A FOLDER DESCRIBING TOPOGRAPHIC MAPS

McFadden Peak, Az 15'



Do Not Reproduce

Mr. Charles H. Jonas was in relative to his Iron King magnetite deposit in the Sierra Ancha Mountains. Tests on his ore by Bethlehem Research Division indicated that the material crushed to  $\frac{1}{4}$  inch yielded 60% iron and when crushed to 200 mesh yielded 69.7% iron. He was interested in extrusion or nodulizing of the concentrates which he would obtain. LAS WR 4-14-61

---

Mr. Charles H. Jonas address is 4031 E. Van Buren, Apt. 9, Starlight Motel, Phoenix  
LAS 6-20-61

---

Mr. Charles H. Jonas called to report that he at last had received the logs of the holes drilled by Cerro Corp. at the Iron King mine, Sierra Ancha. As soon as he has completed his study of them they will be available for inspection by us.  
LAS WR 11-24-61

---

Abstract from "Arizona Iron Ore Deposits" in IRON COMMODITY file: The Iron King deposit, Gila County, is near Larson's Ranch, on the east slope of Asbestos Peak, in the Sierra Ancha Mountains. (Sec.20-21, T5N, R14E)

This deposit, according to Charles Jonas, Mining Engineer, covers 40 claims and consists of a bed of magnetite (with some epidote) which replaces mesal limestone. The bed of magnetite crops out, intermittently on 14 claims. He estimated that the deposit contains roughly enough ore to produce three million tons of concentrate that assays 64 percent iron and which would pass through 100-mesh. The 30-mesh screenings ran 60 percent iron and the 200-mesh screenings ran over 69 percent iron. The samples, for testing mainly came from the north part of the deposit. Cerro Corporation drilled 14 holes, but to date have not released the logs of the holes. The magnetite bed varies considerably in thickness. The preceding ore reserve is contained in an area where the stripping ratio is considered to be favorable.

The property according to Jonas, who is Chief Mining Engineer, is controlled by Arizona Mines Inc., which is composed of Charles Jonas, and Robert Peugh, both of Phoenix, and Charles S. Older of Los Angeles. Jonas lives at the Starlite Motel, 4031 E. Van Buren, in Phoenix (Apt 9).

---



DEPARTMENT OF MINERAL RESOURCES  
STATE OF ARIZONA  
FIELD ENGINEERS REPORT

Mine Iron King Date June 20, 1961  
District Sierra Ancha Dist., Gila County Engineer Lewis A. Smith  
Subject: Interview with Charles Jonas, Mining Engineer

Claims: 40

Location: Secs. 20-21, T. 5 N., R. 14 E. (near Asbestos Peak)

Mineral: Magnetite (iron)

Owners: Arizona Mines Inc., the principal stockholders being Charles Jonas, Mining Engineer of 4031 East Van Buren, (Starlite Motel) Phoenix, Robert L. Pew of Phoenix and Charles S. Older, Los Angeles.

Work: Cerro Corp. recently drilled 14 test holes and ran magnetic surveys on the property. Their results are not yet available. However, according to Jonas the magnetite bed is roughly estimated to contain sufficient ore to yield 8,000,000 tons of concentrates (at 100 mesh). Preliminary tests indicate that this concentrate would assay about 63 percent iron, with no notable impurities. The tests also showed that when ground to minus 200 mesh the grade was raised to 69 percent iron.

Geology: According to Jonas the magnetite replaces Mescal limestone near to its contact with the Dripping Springs quartzite and near to a diabase sill. The magnetite is affiliated with some epidote.