



CONTACT INFORMATION

Mining Records Curator
Arizona Geological Survey
1520 West Adams St.
Phoenix, AZ 85007
602-771-1601
<http://www.azgs.az.gov>
inquiries@azgs.az.gov

The following file is part of the

Arizona Department of Mines and Mineral Resources Mining Collection

ACCESS STATEMENT

These digitized collections are accessible for purposes of education and research. We have indicated what we know about copyright and rights of privacy, publicity, or trademark. Due to the nature of archival collections, we are not always able to identify this information. We are eager to hear from any rights owners, so that we may obtain accurate information. Upon request, we will remove material from public view while we address a rights issue.

CONSTRAINTS STATEMENT

The Arizona Geological Survey does not claim to control all rights for all materials in its collection. These rights include, but are not limited to: copyright, privacy rights, and cultural protection rights. The User hereby assumes all responsibility for obtaining any rights to use the material in excess of "fair use."

The Survey makes no intellectual property claims to the products created by individual authors in the manuscript collections, except when the author deeded those rights to the Survey or when those authors were employed by the State of Arizona and created intellectual products as a function of their official duties. The Survey does maintain property rights to the physical and digital representations of the works.

QUALITY STATEMENT

The Arizona Geological Survey is not responsible for the accuracy of the records, information, or opinions that may be contained in the files. The Survey collects, catalogs, and archives data on mineral properties regardless of its views of the veracity or accuracy of those data.

PRINTED: 09/12/2002

ARIZONA DEPARTMENT OF MINES AND MINERAL RESOURCES AZMILS DATA

PRIMARY NAME: ZELLE

ALTERNATE NAMES:

MOHAVE COUNTY MILS NUMBER: 725

LOCATION: TOWNSHIP 16 N RANGE 15 W SECTION 18 QUARTER NE
LATITUDE: N 34DEG 43MIN 57SEC LONGITUDE: W 113DEG 51MIN 49SEC
TOPO MAP NAME: BEECHER CANYON - 7.5 MIN

CURRENT STATUS: UNKNOWN

COMMODITY:
UNKNOWN

BIBLIOGRAPHY:
ADMMR ZELLE FILE

UNITED STATES
DEPARTMENT OF THE INTERIOR
GEOLOGICAL SURVEY

113° 52' 30" 237000m.E
34° 45'

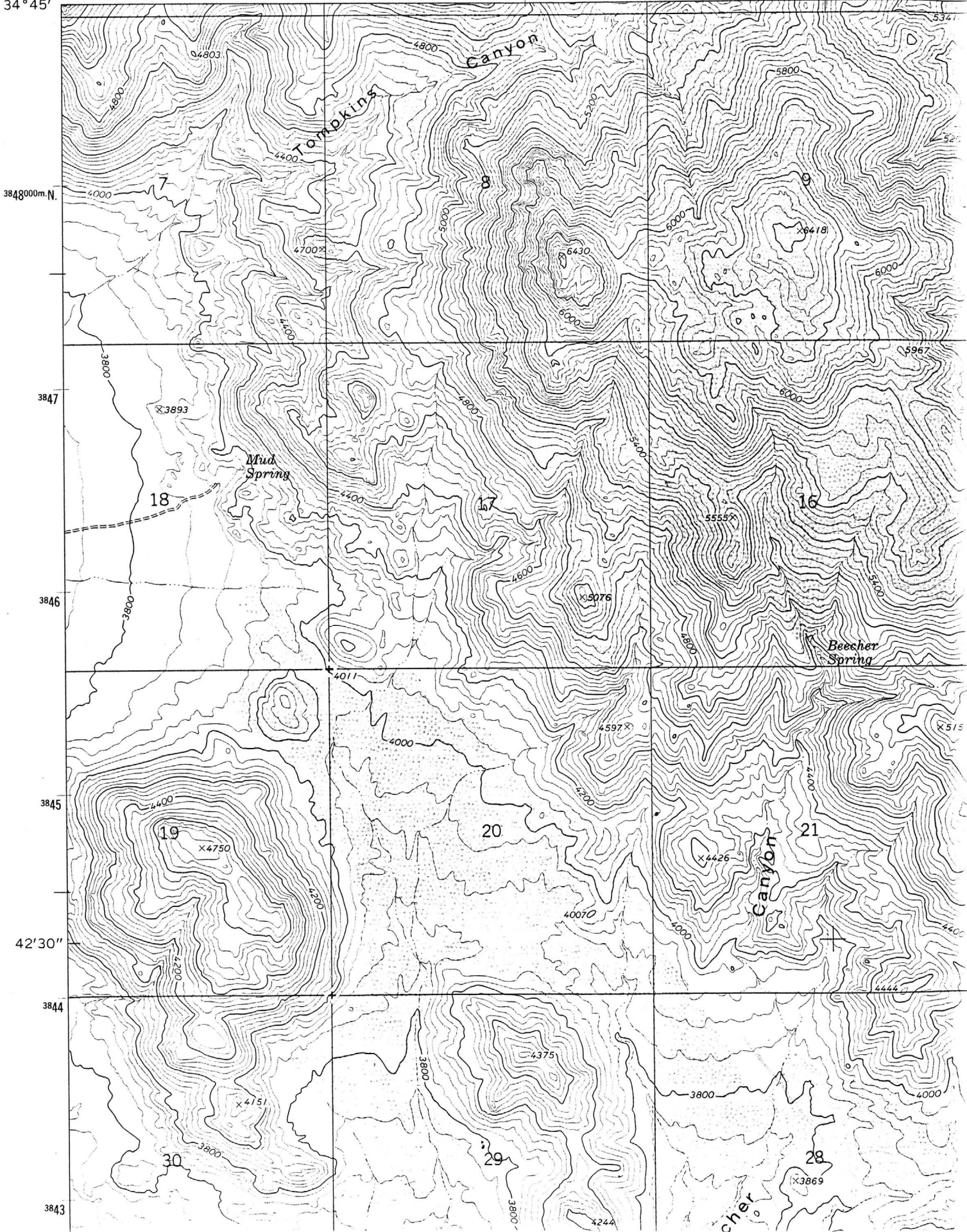
238

239

240

50'

241



ZELLE

MOHAVE COUNTY

NJN WR 9/28/84: Hal Perry (c) reported discovering a mine dump while aerial prospecting for pegmatites in the Hualapai Mountains. Subsequent examination on the ground revealed the dump to have plan dimensions of 30' x 100' and to be composed of altered country and quartz vein material. The dump came from a drift located in NE1/4 Sec 18, T16N R15W but not shown on Beecher Canyon 7.5 quad. Although the rails still head into the drift, the portal has been dammed to supply water to a stock tank. Mr. Perry's speculation was that it was a silver prospect but he will supply further information after he receives the assay results from his samples. The last evidence of activity at the site was a partial location notice with the name Aelle and the date, August, 1966 on it.

NJN WR 11/16/84: Jim Weatherby (c) reported the samples taken by Hal Perry at the Zelle contained no precious metals. Material assayed was weathered granite and possible fault gouge.
