



CONTACT INFORMATION

Mining Records Curator
Arizona Geological Survey
1520 West Adams St.
Phoenix, AZ 85007
602-771-1601
<http://www.azgs.az.gov>
inquiries@azgs.az.gov

The following file is part of the

Arizona Department of Mines and Mineral Resources Mining Collection

ACCESS STATEMENT

These digitized collections are accessible for purposes of education and research. We have indicated what we know about copyright and rights of privacy, publicity, or trademark. Due to the nature of archival collections, we are not always able to identify this information. We are eager to hear from any rights owners, so that we may obtain accurate information. Upon request, we will remove material from public view while we address a rights issue.

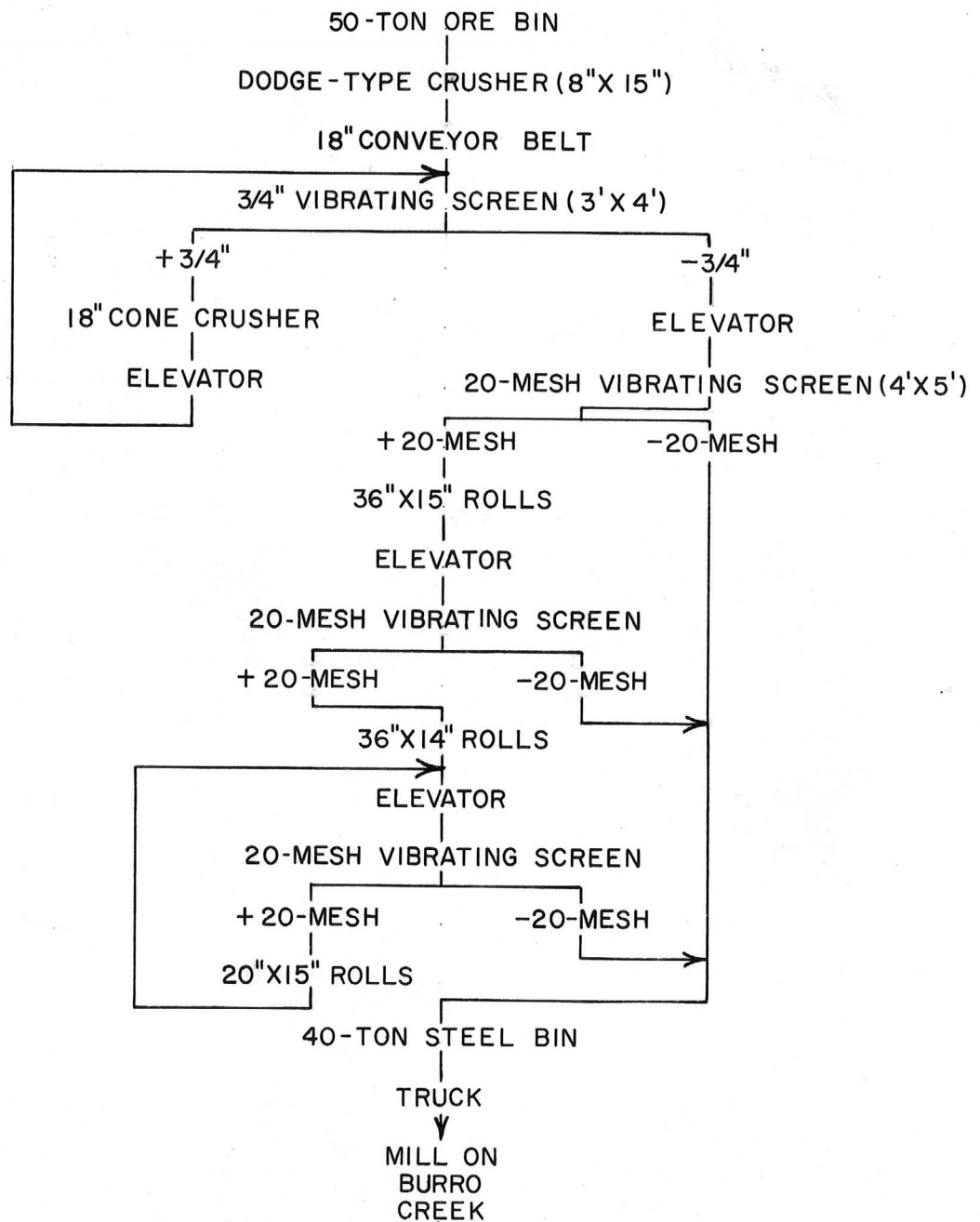
CONSTRAINTS STATEMENT

The Arizona Geological Survey does not claim to control all rights for all materials in its collection. These rights include, but are not limited to: copyright, privacy rights, and cultural protection rights. The User hereby assumes all responsibility for obtaining any rights to use the material in excess of "fair use."

The Survey makes no intellectual property claims to the products created by individual authors in the manuscript collections, except when the author deeded those rights to the Survey or when those authors were employed by the State of Arizona and created intellectual products as a function of their official duties. The Survey does maintain property rights to the physical and digital representations of the works.

QUALITY STATEMENT

The Arizona Geological Survey is not responsible for the accuracy of the records, information, or opinions that may be contained in the files. The Survey collects, catalogs, and archives data on mineral properties regardless of its views of the veracity or accuracy of those data.



All vibrating screens are electrically powered.

Figure 27.- Flowsheet of Zannarapolis crushing plant

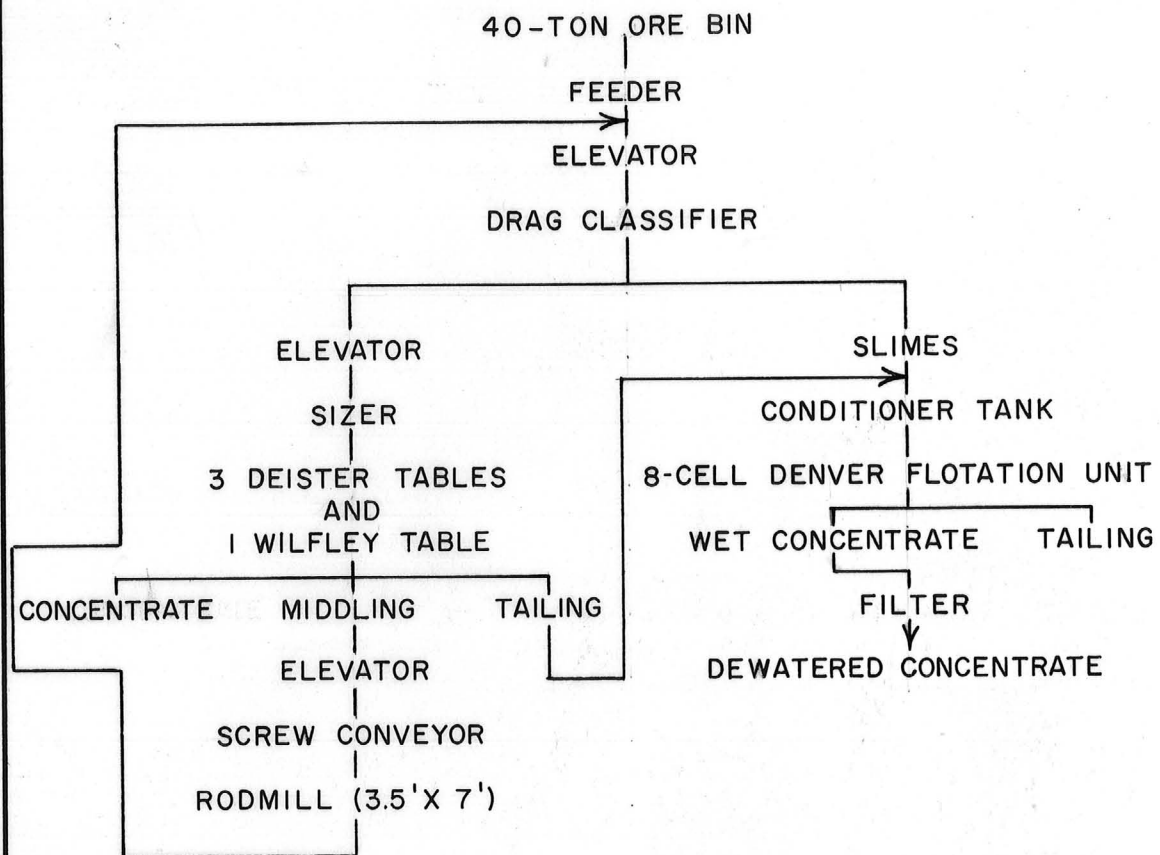


Figure 28.- Flowsheet of Zannarapolis mill.

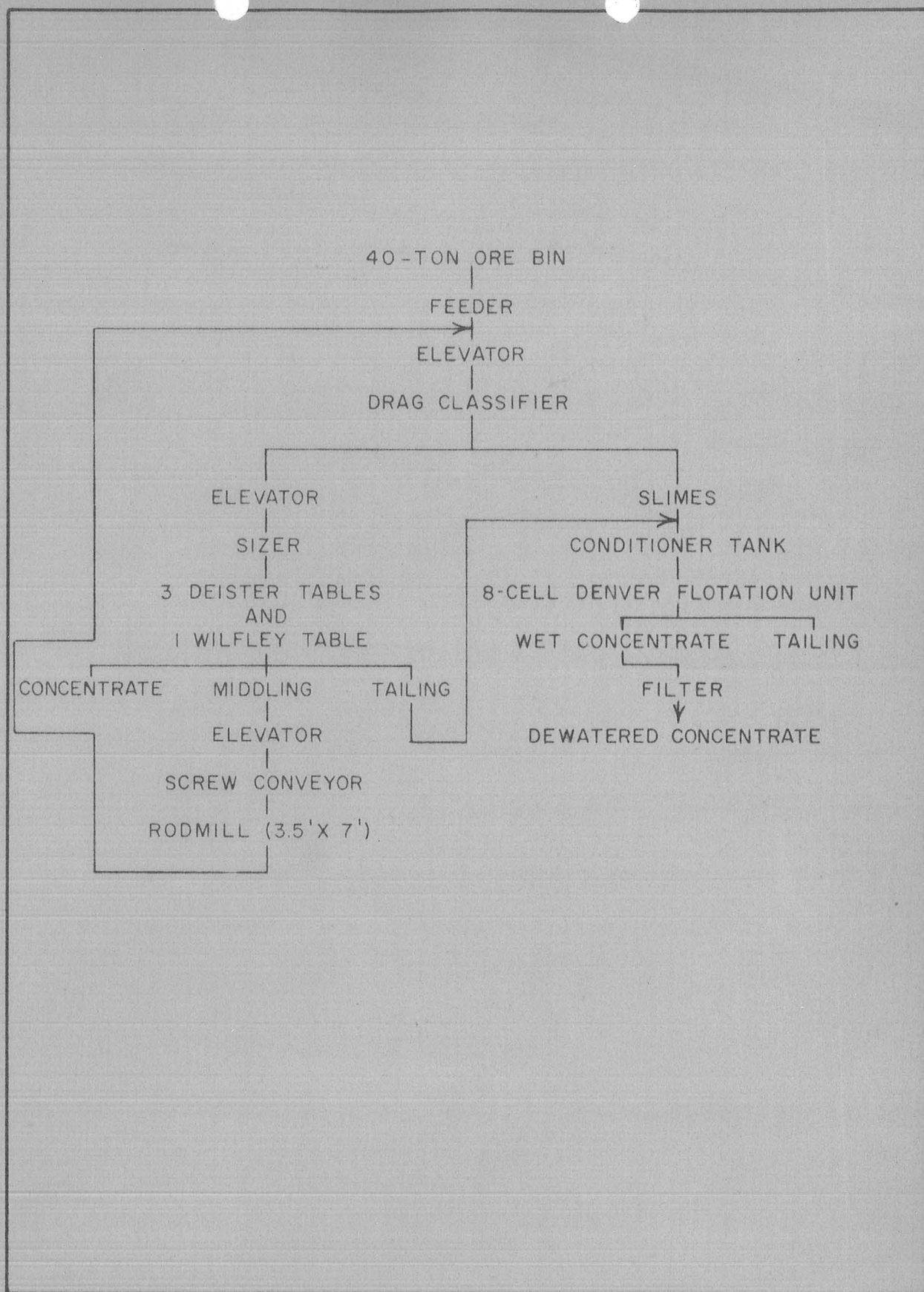


Figure 28.- Flowsheet of Zannarapolis mill.

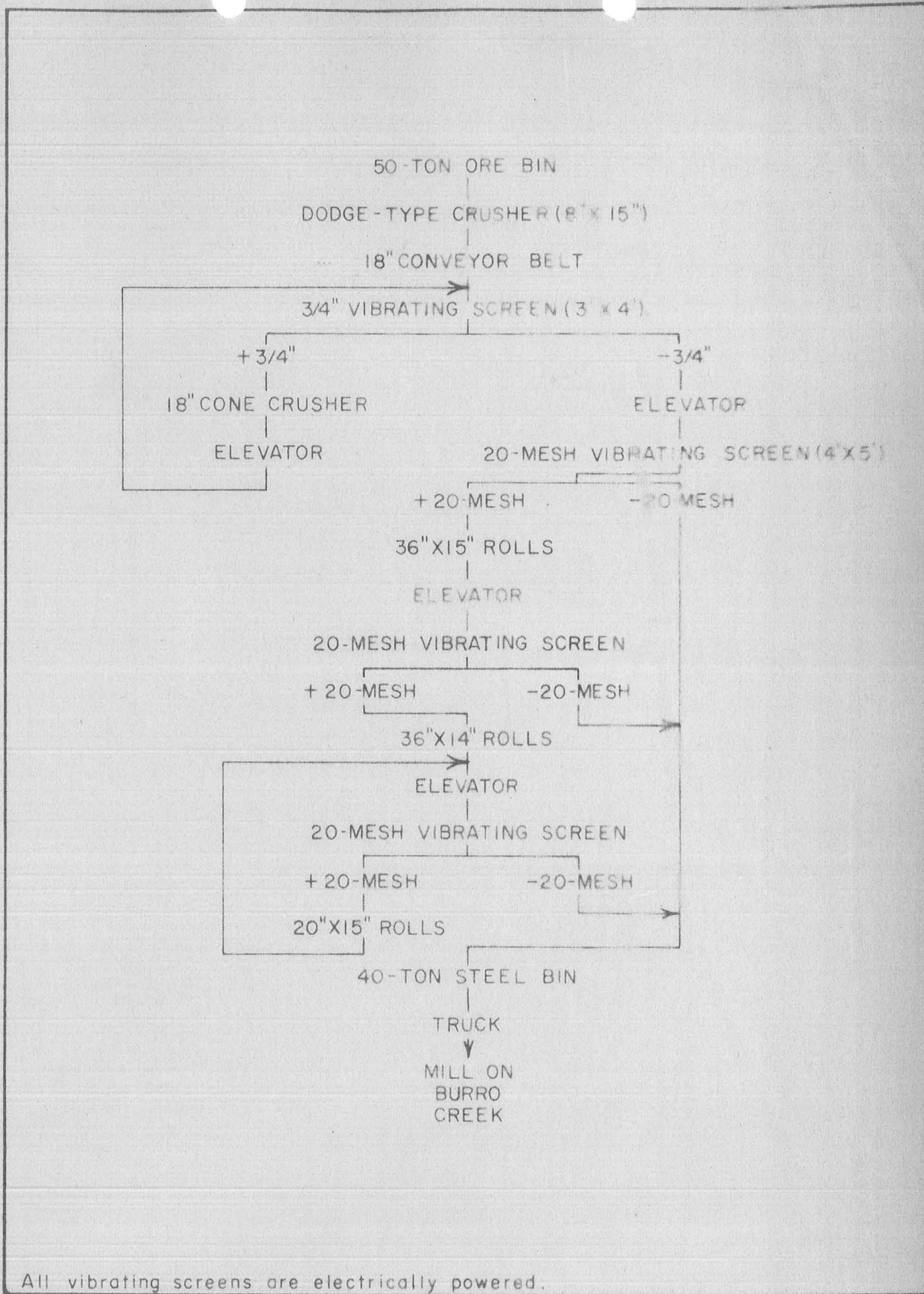


Figure 27.- Flowsheet of Zannarapolis crushing plant

10-27-66

1"=5000'

13R10

2-3

Ca 530
Sag 57
f-88.52



10-27-66

1" = 5000'

13R10

2-4

Ca 530
Sag 57
1-88.52



10-27-66

1"=5000'

13R10

2-5

Ca 530
Sag 57
f-88.52



10-27-66

1"=5000'

13R10

2-6

Ca 530
SA 57
1-88.52



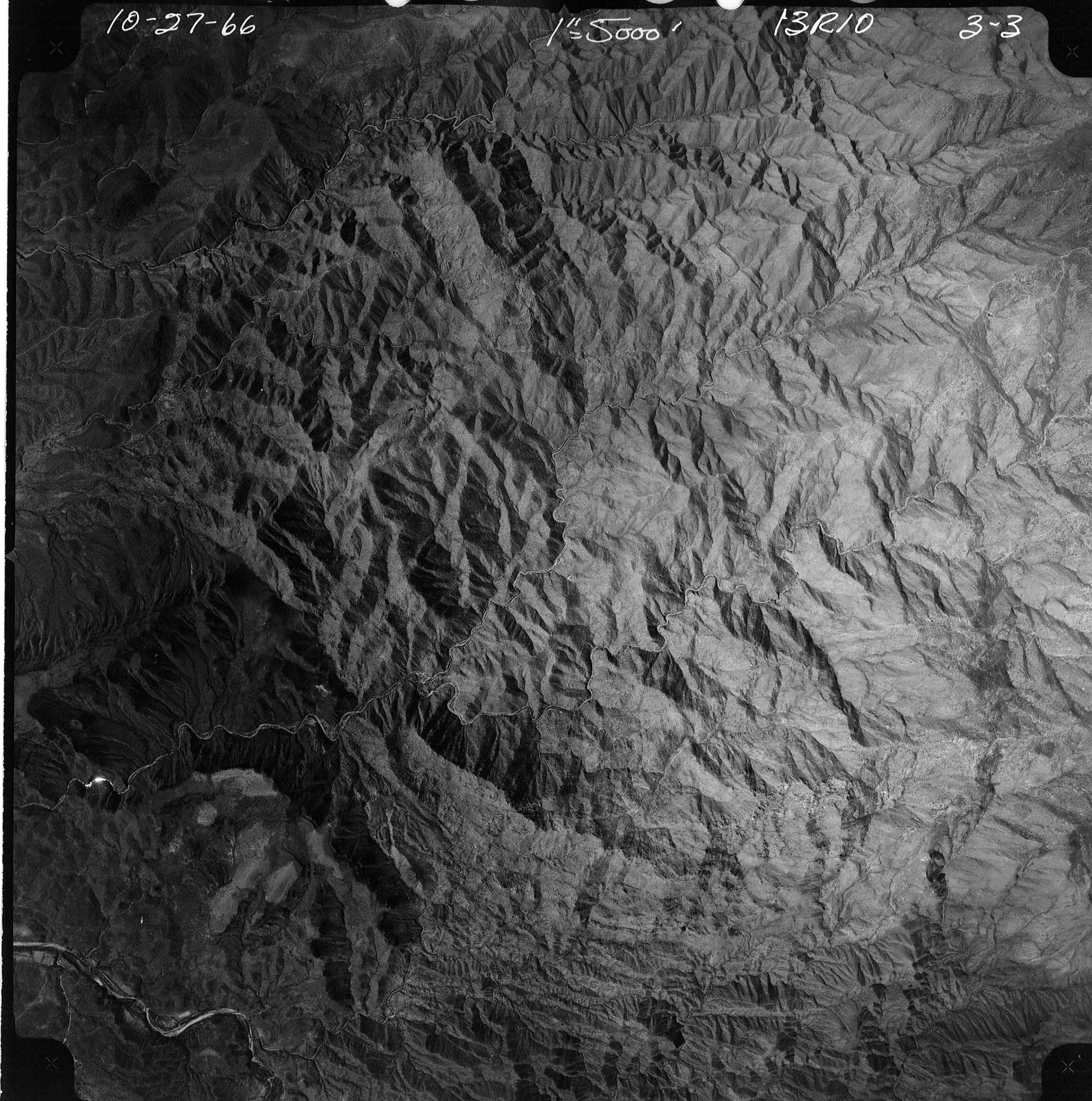
10-27-66

1" = 5000'

13R10

3-3

Ca 530
SAg 57
f=88,52



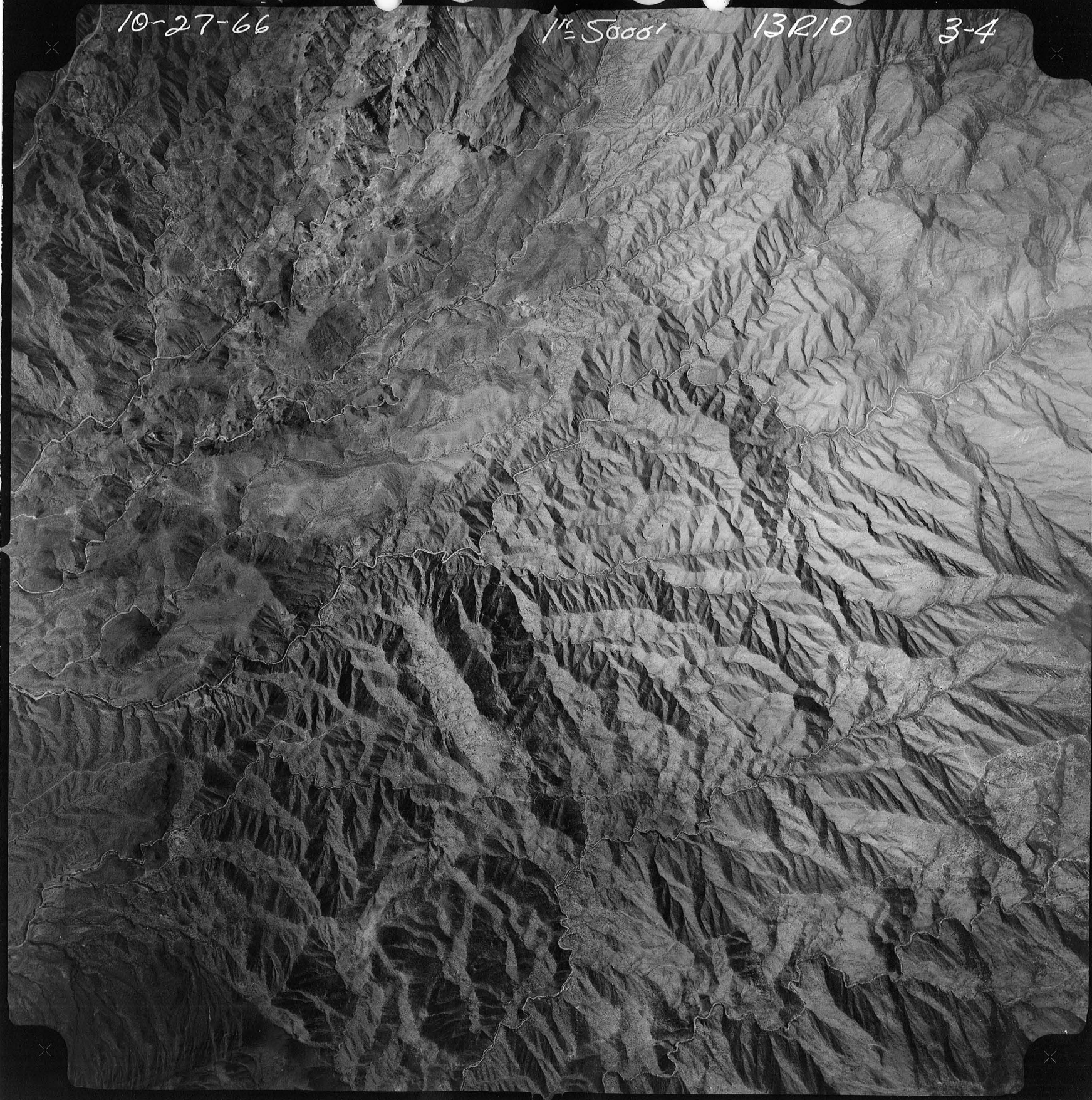
Ca 530
SAg 57
f=88,52

10-27-66

1"=5000'

13R10

3-4



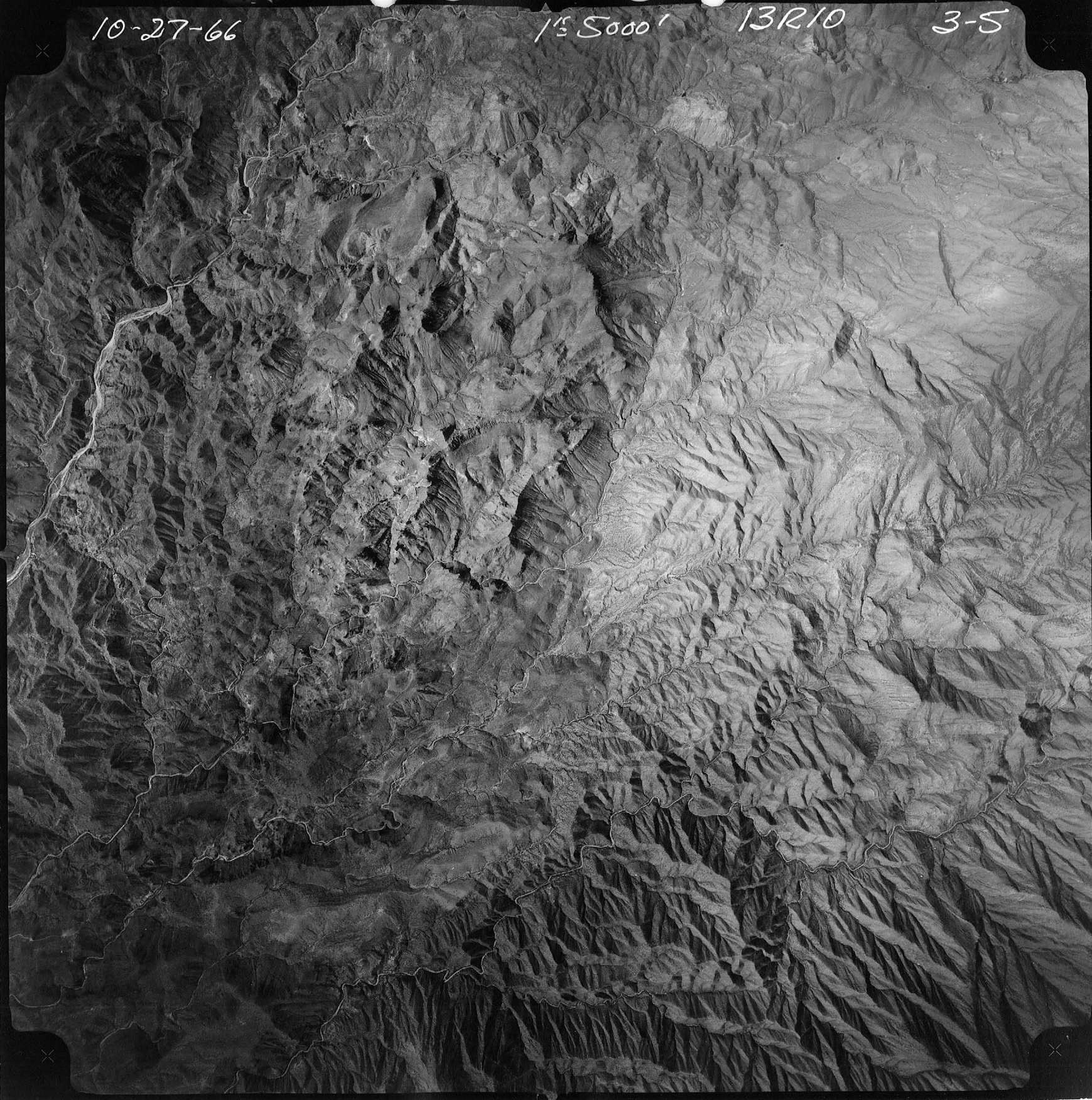
Ca 530
Sag 57
f=88,52

10-27-66

1° 5000'

13R10

3-5



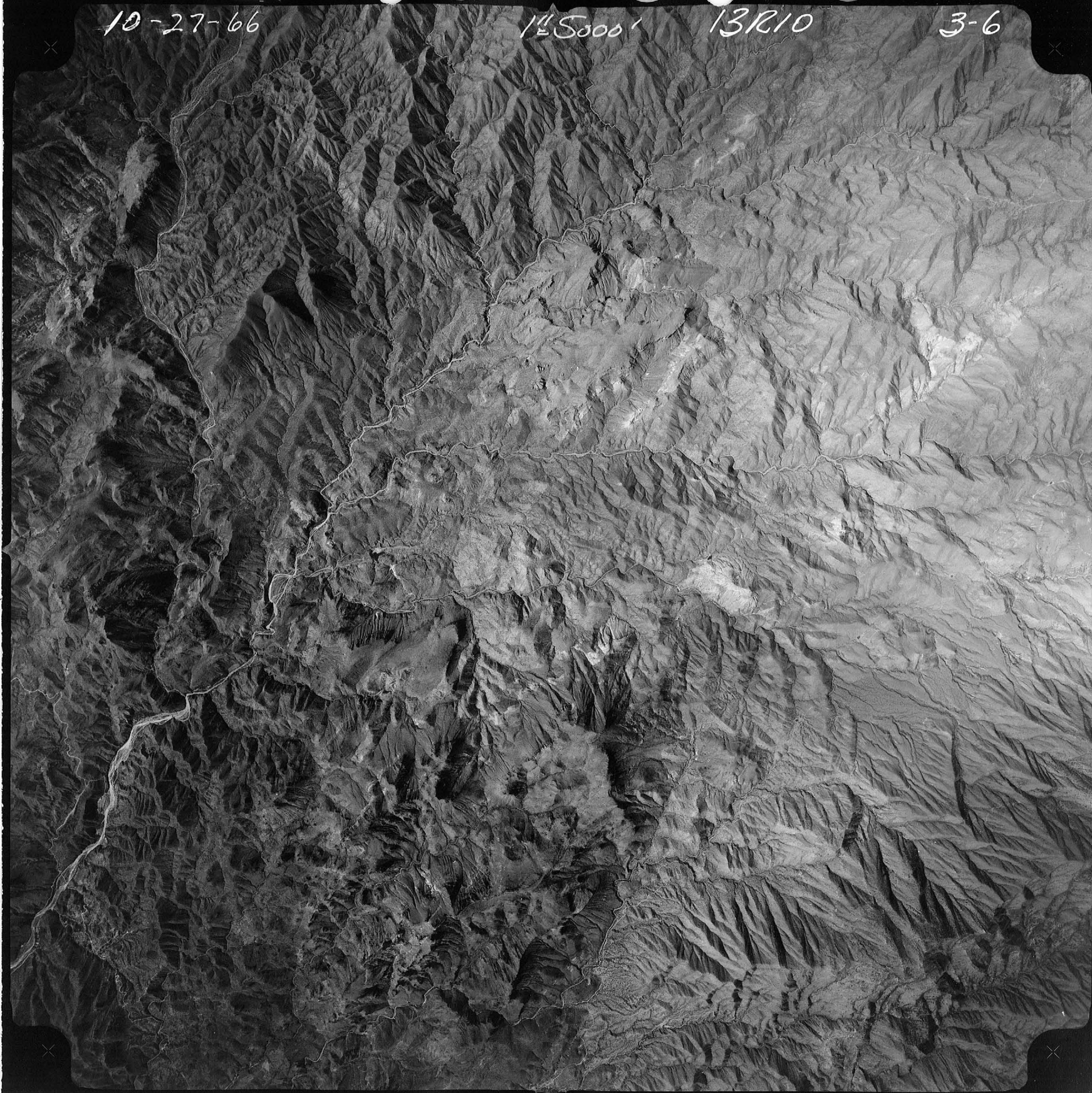
Ca 530
SAG 57
f=88,52

10-27-66

14500'

13R10

3-6



REPORT ON A VISIT TO ZANNARAPOLIS NO. 19 CLAIM IN YAVAPAI COUNTY ARIZONA

This report was written for Mr. George Kokalis Executor of the Zannarapolis Claims owned by the Greek Orthodox Archdiocese Of North & South America. A copy will be given to Mr. Kokalis and to Mr. Nyal Niemuth, Mining Engineer of the Department Of Mines & Mineral Resources of the State Of Arizona. Mr. Niemuth has been very helpful to me making it possible to write this report. The second copy will be placed in the Zannarapolis file.

This No. 19 Claim includes the Crushing Plant, the Open Pit Mine to the rear of the Plant, and the Worker's Camp Site one mile to the north of the plant. This Claim was visited by my son James Taseos, and Socrates G. Taseos, writer of this report, on November 6, 1993.

LOCATION OF THIS NO. 19 CLAIM

The Crushing Plant is located on Topographic Quadrangle, "Arrastra MT NE", T13N, R10W, Section 1. The Camp Site is located on Topographic Quadrangle "Grayback MTS", T14N, R10W, Section 36.

DIRECTIONS TO NO. 19 CLAIM FROM SUN CITY WHERE THE WRITER LIVES

From Sun City to the Crushing Plant is a distance of about 86 miles as follows: north-west on Route 60 to Wickenburg; Route 93 north-west to the junction with Route 97 which leads to Bagdad, AZ; turn right on Route 97, go about 1 mile, turn left onto a dirt road containing a sign "Zannarapolis", go about 3 miles to arrive at the Crushing Plant, 1 mile to the north of the Plant is the Camp Site for the Workers.

DESCRIPTION OF THE EQUIPMENT THAT WAS USED IN THE CRUSHING PLANT

1. 50 Ton Raw Ore Bin.
2. Crusher (8" x 15").
3. 18" Conveyor Belt.
4. 3/4" Vibrating Screen (3" x 4").
5. + 3/4" 18" Cone Crusher & Elevator.
6. -3/4" Mesh & Elevator.
7. 20 Mesh Vibrating Screen
8. +20 Mesh, 36" x 15" Rolls & Elevator.
9. 20 Mesh Vibrating Screen.
10. +20 Mesh, 36" x 14" Rolls & Elevator.
11. 20 Mesh Vibrating Screen.
12. +20 Mesh, 20" x 15" Rolls
13. -20 Mesh Elevator.
14. 40 Ton, -20 Mesh Storage Bin.
15. All Power Equipment, and Wiring.

The -20 Mesh Ore was trucked about 10 miles to Mill near the intersection of Burro Creek and Bonanza Wash shown on Topographic Quadrangle "Grayback MTS", T14N, R10W.

CONDITION OF ZANNARAPOLIS NO. 19 CLAIM - NOVEMBER 6, 1993

The Steel Frame Work of the Crushing Plant is void of all equipment listed on Page 1: items No. 1 to No. 12 inclusively and item No. 15. The only items remaining are item No. 13 (-20 Mesh Elevator) and item No. 14 (40 Ton, -20 Mesh Storage Bin). See attached Photoes No. 1 - No. 5.

Apparently, the above missing items were either sold and or vandalized.

There is no equipment at the Open Mine Pit to the rear of the Crushing Plant. See attached Photoes No. 6 - No. 7.

All of the buildings in the Worker's Camp Site are just standing empty shells stripped of everything in their interiors. See attached Photoes No. 8 - No. 13.

The dirt road to this No. 19 Claim is in good condition.

BRIEF HISTORY OF THE ZANNARAPOLIS CLAIMS

Scheelite (CaWO_4) was discovered in 1941 by J. P. Zannarapolis and J. P. Robinson Jr. Thirty-one of the claims were located by J. P. & C. P. Zannarapolis, and J. P. Robinson, Jr., between October 1941 and February 1942.

Production in the early 1940's amounted to 10 tons of ore containing 1.94 percent of WO_4 , and according to J. P. Zannarapolis, about 4,000 pounds of concentrates containing 40 to 50 percent of WO_4 . This grade of ore was produced at the buyer's request. Due to increased production of Tungsten from other mines, and a sharp drop in the price of Tungsten the buyer's demand dried up, production at the Zannarapolis Claim was terminated some time in the late 1940's.

Also, the World Wide price of Tungsten dropped even further soon after large deposits of high grade Tungsten ore was discovered in China. It is estimated that China now controls 75 percent of the World's Market.

The Zannarapolis brothers died in the early 1980's and deeded their claims to the Greek Orthodox Archdiocese of North & South America.

MINING LAW REFORM BILLS

Bills: Craig's S.775, Bumpers S.257 and H. R. 322 by Rahill will have a strong effect on how mines in the U. S. can operate. What effect these Bills will have on Zannarapolis Claims must be looked into by the G.O.A. of N. & S. A. to determine whether to hold onto these Claims and or drop them.

THIS REPORT

Report was written by Socrates G. Taseos on November 13, 1993 in Sun City Arizona.



PHOTO NO. 1



PHOTO NO. 2



PHOTO NO. 3

It wasn't possible to take one Photo of the Crushing Plant's Full Elevation with my camera. Therefore, the above three Photos were taken. One has to visualize the Photos superimposed on top of each other to see the true length of the Crushing Plant's Steel Frame.

Only the -20 Mesh Ore Elevator was left as shown to the right in Photo No. 3. All of the other Equipment that previously filled the Steel Frame was either sold and or vandalized.



PHOTO NO. 4

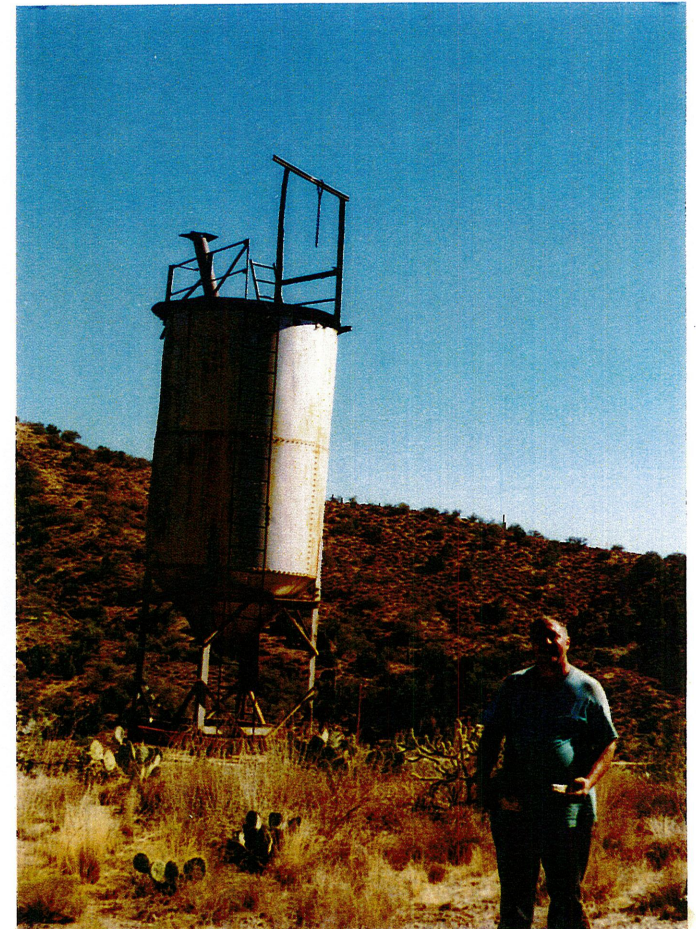


PHOTO NO. 5

Photo No. 4 shows the Laboratory and Storage Building which is now an empty shell completely stripped of its equipment and electrical wirings.

Photo No. 5 shows my son James Taseos standing in front of the 40 ton, -20 mesh Storage Bin which has been disconnected from the -20 mesh ore Elevator shown to the right of Photo No. 3.



PHOTO NO. 6



PHOTO NO. 7

Photos No. 6 and No. 7 show the Open Pit Mine directly behind the Crushing Plant. It is approximately 60 feet long, 30 feet wide, with a 30 foot face. A few small samples of rock taken from this Pit showed some Scheelite was present when viewed under violet light. That is, the characteristic Blue Light radiated from the rocks.



PHOTO NO. 8

Photo No. 8 shows the remains of two small buildings at the Worker's Camp Site.



PHOTO NO. 9

Photo No. 9 shows the remains of the Water Tower and Pump House at the Worker's Camp Site.



PHOTO NO. 10



PHOTO NO. 11

Photos No. 10 and No. 11 show the shell remains of buildings at the Worker's Camp Site.



PHOTO NO. 12



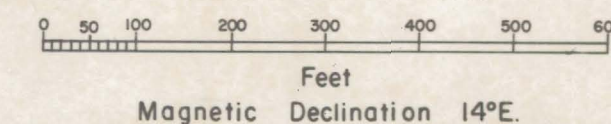
PHOTO NO. 13

Photo No. 12 and No. 13 show the shell remains of buildings at the Worker's Camp Site.

MINERAL SURVEY NO. 4623 ARIZONA

CLAIM OF
JOHN PHILIP ZANNARAS
CONSTANTINE PHILIP ZANNARAS &
JOHN PIERCE ROBINSON, JR.
KNOWN AS THE
MINERAL DYKE NO.21

SITUATE IN
Sec.30, T.14N., R.9W., G.&S.R.M.
YAVAPAI COUNTY
Eureka Mining District
Arizona Land District
Lat.34°31'41"N., Long.113°14'32"W., at Cor. No. 4,
Mineral Dyke No.21



Surveyed Aug. 3, 1964 to Feb. 7, 1965
By Harvey W. Smith, Mineral Surveyor

UNITED STATES DEPARTMENT OF THE INTERIOR
BUREAU OF LAND MANAGEMENT

Phoenix, Arizona, March 1, 1965
I hereby certify that this plat of Mineral Survey
No. 4623, Arizona is strictly conformable to the field notes
of said survey which have been examined and approved.

W. J. Weiler
State Director

T.14N., R.9W., G.&S.R.M.

S.E. 1/4

Sec. 19
Sec. 30

1/4 Cor.

N.E. 1/4

Mineral Dyke No. 20
Sur. No. 4578

MINERAL DYKE No.21

True Meridian

N. 27° 14' 10" W.
1418.16

N. 30° 52' E.
538.73

N. 25° 26' 40" E.
600.0

S. 57° 09' E.
715.

S. 30° 52' W.
600.34

1180.34

1180.34

EAST

300.

600.0

C.D.N. 2
S. 25° 26' 40" W.
600.0

Disc. Pt.

WEST

300.

600.0

(II)

(XI)

ZANNARAS PROPERTY
YAVAPAI COUNTY, ARIZONA

SCALE 1"=500'
COUNT INT 20'
JULY JUNE,
1965

N

Albite Porphyry and related rocks

Bridle Formation (undifferentiated) Mostly Mica Schists

Dark Rhyolite Formation

Bleached

Diorite and/or Basalt Volcanics

Moderate to Strong Mineralization

Strong Mineralization

T.14N.,R.10W.

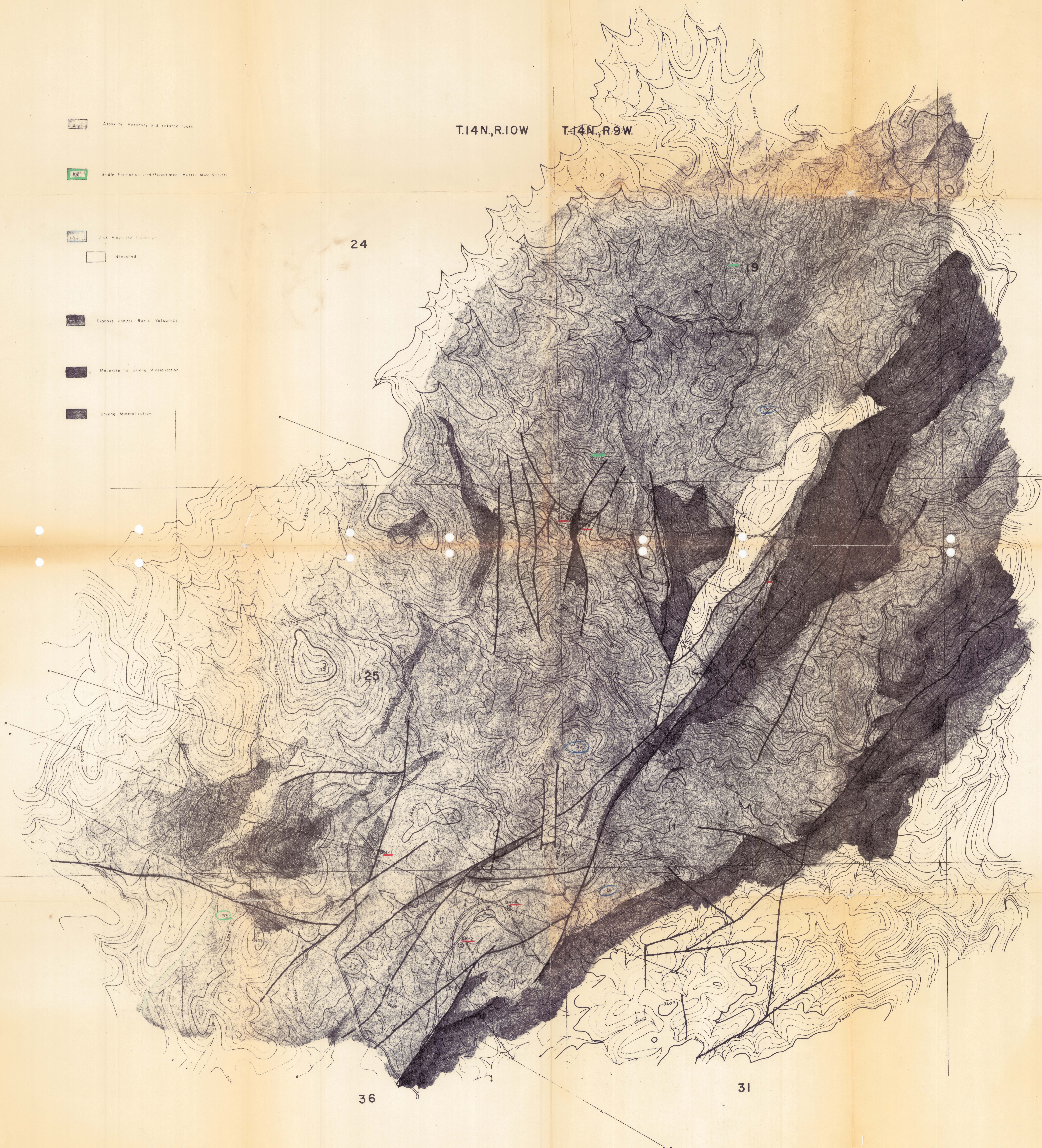
T.14N.,R.9W.

24

25

36

31



GEOLOGY
ZANNARAS PROPERTY
Yavapai County