



CONTACT INFORMATION

Mining Records Curator
Arizona Geological Survey
1520 West Adams St.
Phoenix, AZ 85007
602-771-1601
<http://www.azgs.az.gov>
inquiries@azgs.az.gov

The following file is part of the

Arizona Department of Mines and Mineral Resources Mining Collection

ACCESS STATEMENT

These digitized collections are accessible for purposes of education and research. We have indicated what we know about copyright and rights of privacy, publicity, or trademark. Due to the nature of archival collections, we are not always able to identify this information. We are eager to hear from any rights owners, so that we may obtain accurate information. Upon request, we will remove material from public view while we address a rights issue.

CONSTRAINTS STATEMENT

The Arizona Geological Survey does not claim to control all rights for all materials in its collection. These rights include, but are not limited to: copyright, privacy rights, and cultural protection rights. The User hereby assumes all responsibility for obtaining any rights to use the material in excess of "fair use."

The Survey makes no intellectual property claims to the products created by individual authors in the manuscript collections, except when the author deeded those rights to the Survey or when those authors were employed by the State of Arizona and created intellectual products as a function of their official duties. The Survey does maintain property rights to the physical and digital representations of the works.

QUALITY STATEMENT

The Arizona Geological Survey is not responsible for the accuracy of the records, information, or opinions that may be contained in the files. The Survey collects, catalogs, and archives data on mineral properties regardless of its views of the veracity or accuracy of those data.

PRINTED: 09/12/2002

ARIZONA DEPARTMENT OF MINES AND MINERAL RESOURCES AZMILS DATA

PRIMARY NAME: YELLOW ROOT

ALTERNATE NAMES:

YELLOW BIRD PROSPECT
O' CONNER TUNGSTEN
PATENTED CLAIMS MS 4379

MOHAVE COUNTY MILS NUMBER: 601

LOCATION: TOWNSHIP 23 N RANGE 14 W SECTION 12 QUARTER SW
LATITUDE: N 35DEG 23MIN 24SEC LONGITUDE: W 113DEG 43MIN 33SEC
TOPO MAP NAME: VALENTINE - 7.5 MIN

CURRENT STATUS: DEVEL DEPOSIT

COMMODITY:

TUNGSTEN

BIBLIOGRAPHY:

ADMMR YELLOW ROOT MINE FILE
DALE, V.B., 1961 TUNGSTEN DEPOSITS OF GILA,
YAVAPAI AND MOHAVE COUNTIES, ARIZ, US BUREAU
OF MINES INFMN CIRCULAR IC 8078, P. 98-99
BLM MINING DISTRICT SHEET 396
ADMMR MOHAVE COUNTY CARD FILE
ADMMR "U" FILE MOHAVE W 25

396

NE 1/4, T. 23N., R. 14 W.
PEACOCK DIST.

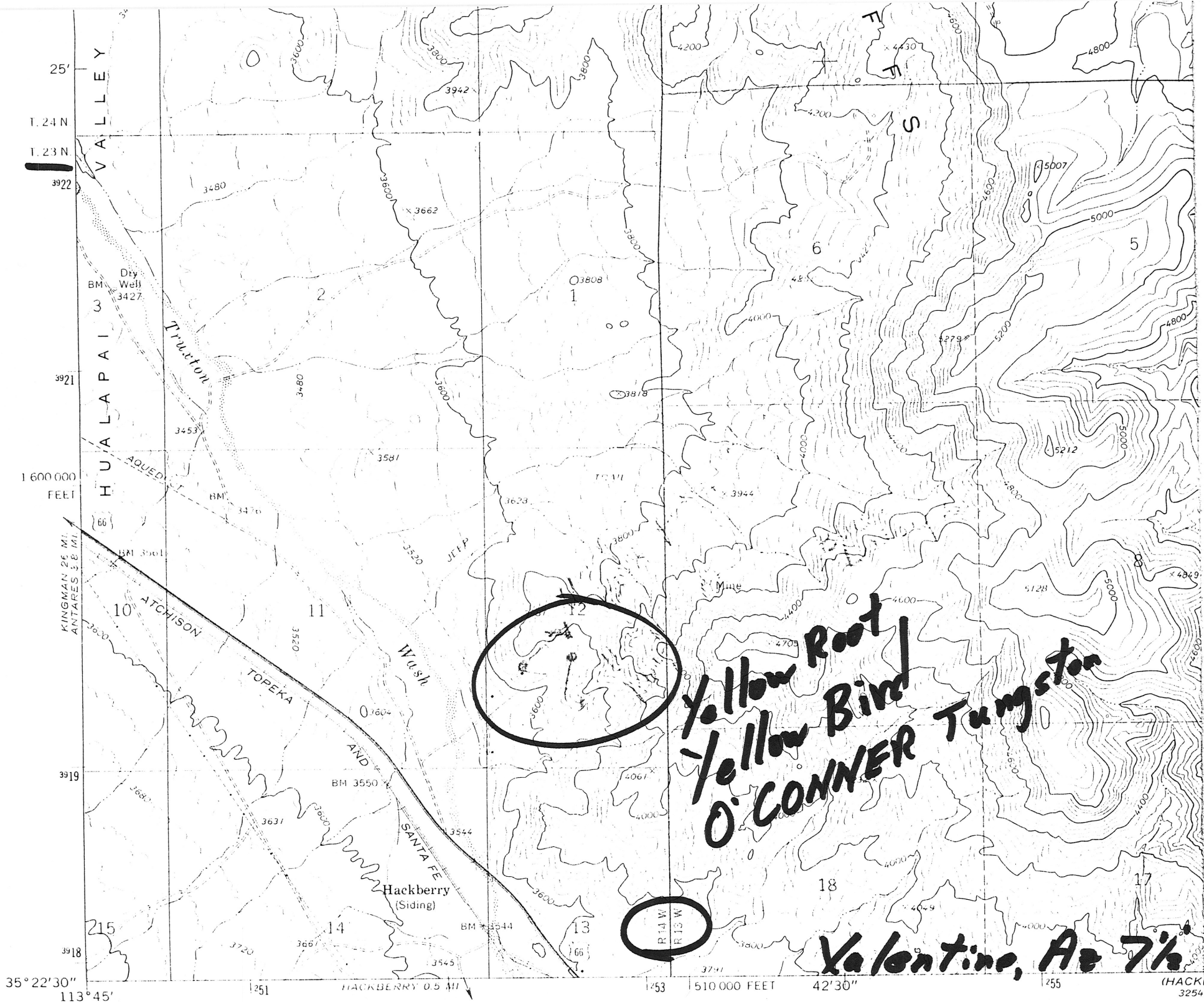
Sec. 1

Sec. 12

YELLOW BIRD
4379 1-17

YELLOW ROOT
4379 2-12

YELLOW BIRD
4379 1-17
YELLOW ROOT 4379 2-12



Yellow Root
Yellow Bird
O' CONNER Tungston

Valentine, Az 7 1/2

R14W
R15W

35° 22' 30"
113° 45'

HACKBERRY 0.5 MI

510 000 FEET

42' 30"

HACK
3254

DEPARTMENT OF MINERAL RESOURCES
STATE OF ARIZONA
FIELD ENGINEERS REPORT

Mine Yellow Root (O'Conner) Tungsten

Date January, 1953.

District Hackberry, 2.miles North of Hackberry

Engineer George F. Reed

Subject: General Description.

Location & General Conditions:-

The property is in Mohave County in probably Sec.6, Twp.23N, Range 13W. It is reached from Hackberry by driving west across the bridge on highway 66 to a dim road which crosses back over the wash in a North-Easterly direction about $2\frac{1}{2}$ miles to the workings and O'Conner's trailer house, clearly visable from highway 66. Elevation is about 4000 feet. A gentle slope leads up almost to the mine which is at the beginning of the rugged Southward extension of the Grand Wash Cliffs. Water and power are available at Hackberry, possibly closer. The two unpatented claims, Yellow Root #1 and #2 and held by location by H.M. O'Conner, General Delivery, Kingman. He usually lives at the mine.

Geology and Ore Conditions:

The veins being explored by O'Conner are in a dark green Chlorite Schist area trending in a North-Easterly direction. Schistosity and the mineralization strikes in the same direction, and have almost vertical dip. Surrounding the roof pendant of schist is a large area of granite of probable Pre-Cambrian age like the schist.

The principal ore showing has been opened with a cut which shows a vertical face of ore about ten feet high. The mineralization is about $2\frac{1}{2}$ -3 feet wide and consists of yellowish to green mixture of quartz, actinolite?, some copper stain (green), etc., with specks of Scheelite up to $1/8$ inch in diameter. The scheelite fluoresces yellowish as though it might carry molybdenum. ~~Selected~~ Selected specimens or samples have run around 1.0% WO₃ according to O'Conner. This was what he evidently thought he might produce by sorting. A guess at grade with the lamp across $2\frac{1}{2}$ feet was possibly 0.5% WO₃.

Conclusion:

This is a raw prospect. If the scheelite is not undesirable due to Molybdenum, further prospecting might open minable scheelite.

George F. Reed