



CONTACT INFORMATION

Mining Records Curator
Arizona Geological Survey
1520 West Adams St.
Phoenix, AZ 85007
602-771-1601
<http://www.azgs.az.gov>
inquiries@azgs.az.gov

The following file is part of the

Arizona Department of Mines and Mineral Resources Mining Collection

ACCESS STATEMENT

These digitized collections are accessible for purposes of education and research. We have indicated what we know about copyright and rights of privacy, publicity, or trademark. Due to the nature of archival collections, we are not always able to identify this information. We are eager to hear from any rights owners, so that we may obtain accurate information. Upon request, we will remove material from public view while we address a rights issue.

CONSTRAINTS STATEMENT

The Arizona Geological Survey does not claim to control all rights for all materials in its collection. These rights include, but are not limited to: copyright, privacy rights, and cultural protection rights. The User hereby assumes all responsibility for obtaining any rights to use the material in excess of "fair use."

The Survey makes no intellectual property claims to the products created by individual authors in the manuscript collections, except when the author deeded those rights to the Survey or when those authors were employed by the State of Arizona and created intellectual products as a function of their official duties. The Survey does maintain property rights to the physical and digital representations of the works.

QUALITY STATEMENT

The Arizona Geological Survey is not responsible for the accuracy of the records, information, or opinions that may be contained in the files. The Survey collects, catalogs, and archives data on mineral properties regardless of its views of the veracity or accuracy of those data.

PRINTED: 09/12/2002

ARIZONA DEPARTMENT OF MINES AND MINERAL RESOURCES AZMILS DATA

PRIMARY NAME: YAVAPAI MATERIALS PIT

ALTERNATE NAMES:

BORROW PIT 59
AZ DEPT TRANSPRTATION PIT 5162
PIONEER

YAVAPAI COUNTY MILS NUMBER: 618

LOCATION: TOWNSHIP 15 N RANGE 1 W SECTION 31 QUARTER NW
LATITUDE: N 34DEG 38MIN 20SEC LONGITUDE: W 112DEG 24MIN 30SEC
TOPO MAP NAME: CHINO VALLEY SOUTH - 7.5 MIN

CURRENT STATUS: PAST PRODUCER

COMMODITY:

SAND & GRAVEL

BIBLIOGRAPHY:

ADMMR YAVAPAI MATERIALS PIT FILE
AZ DEPT TRANSPORTATION, (CIRCA 1967), ARIZONA
MATERIALS INVENTORY A13-436, P 26,55
ADMMR, 1994, DIR ACTIVE MINES IN ARIZ, P A21
USGS CHINO VALLEY SO. 7.5' QUADRANGLE

08/31/94

ARIZONA DEPARTMENT OF MINES AND MINERAL RESOURCES FILE DATA

PRIMARY NAME: YAVAPAI MATERIALS PIT

ALTERNATE NAMES:

BORROW PIT 59
AZ DEPT TRANSPRTATION PIT 5162

YAVAPAI COUNTY MILS NUMBER: 618

LOCATION: TOWNSHIP 15 N RANGE 1 W SECTION 31 QUARTER NW
LATITUDE: N 34DEG 38MIN 20SEC LONGITUDE: W 112DEG 24MIN 30SEC
TOPO MAP NAME: CHINO VALLEY SOUTH - 7.5 MIN

CURRENT STATUS: ACTIVE 1994

COMMODITY:

SAND & GRAVEL

BIBLIOGRAPHY:

ADMMR YAVAPAI MATERIALS PIT FILE
AZ DEPT TRANSPORTATION, (CIRCA 1967), ARIZONA
MATERIALS INVENTORY A13-436, P 26,55
ADMMR, 1994, DIR ACTIVE MINES IN ARIZ, P A21
USGS CHINO VALLEY SO. 7.5' QUADRANGLE

Date Printed: 08/31/94

ARIZONA DEPARTMENT OF MINES AND MINERAL RESOURCES

VERBAL INFORMATION SUMMARY

Information from: **An office visitor**

Company:

Address:

City, State ZIP:

Phone:

MINE: Yavapai Materials Pit

ADMMR Mine File: Yavapai Materials Pit

County: Yavapai

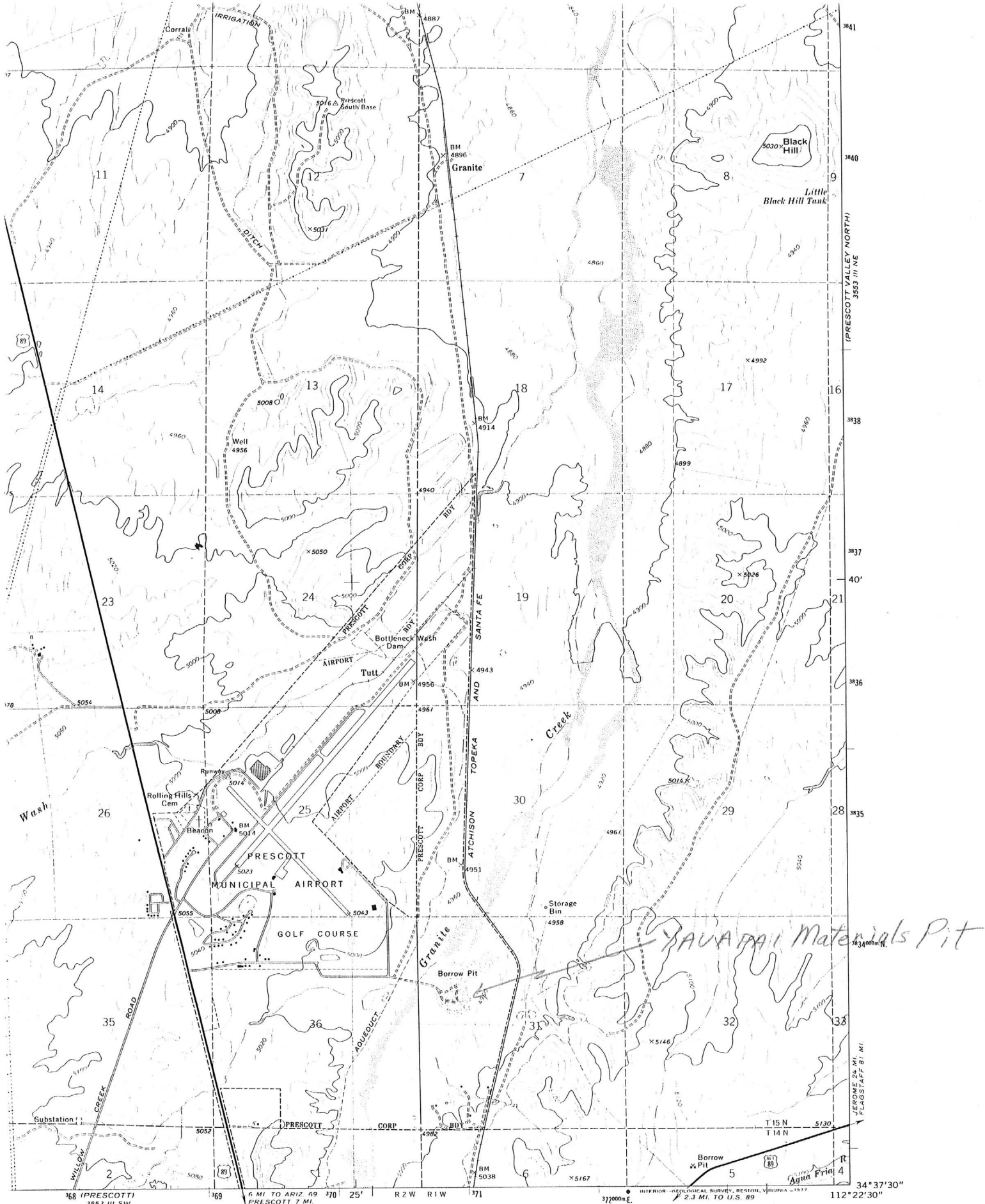
AzMILS Number: 618

SUMMARY

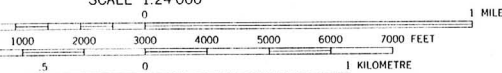
A visitor interested in acquiring land valuable for sand and gravel production requested information on this deposit. He explained that it is being operated by Yavapai Materials, Inc., P.O. Box 814, 5899 Wilkinson, Prescott, AZ 86301. It is producing construction aggregate for the Prescott and Chino Valley areas.

Ken A. Phillips, Chief Engineer

Date: August 30, 1994



SCALE 1:24 000



CONTOUR INTERVAL 20 FEET
DOTTED LINES REPRESENT 10-FOOT CONTOURS
NATIONAL GEODETIC VERTICAL DATUM OF 1929



QUADRANGLE LOCATION

ROAD CLASSIFICATION

- Primary highway, hard surface
- Secondary highway, hard surface
- Light-duty road, hard or improved surface
- Unimproved road
- Interstate Route
- U. S. Route
- State Route

CHINO VALLEY SOUTH, ARIZ.

NW/4 PRESCOTT 15' QUADRANGLE
M2275 W1122 E75

34° 37' 30"
112° 22' 30"
T 15 N
T 14 N
R 2 W
R 1 W
R 371
R 4
3553 III SE
(PRESCOTT SOUTH)

Yavapai Materials Pit