



CONTACT INFORMATION

Mining Records Curator
Arizona Geological Survey
1520 West Adams St.
Phoenix, AZ 85007
602-771-1601
<http://www.azgs.az.gov>
inquiries@azgs.az.gov

The following file is part of the

Arizona Department of Mines and Mineral Resources Mining Collection

ACCESS STATEMENT

These digitized collections are accessible for purposes of education and research. We have indicated what we know about copyright and rights of privacy, publicity, or trademark. Due to the nature of archival collections, we are not always able to identify this information. We are eager to hear from any rights owners, so that we may obtain accurate information. Upon request, we will remove material from public view while we address a rights issue.

CONSTRAINTS STATEMENT

The Arizona Geological Survey does not claim to control all rights for all materials in its collection. These rights include, but are not limited to: copyright, privacy rights, and cultural protection rights. The User hereby assumes all responsibility for obtaining any rights to use the material in excess of "fair use."

The Survey makes no intellectual property claims to the products created by individual authors in the manuscript collections, except when the author deeded those rights to the Survey or when those authors were employed by the State of Arizona and created intellectual products as a function of their official duties. The Survey does maintain property rights to the physical and digital representations of the works.

QUALITY STATEMENT

The Arizona Geological Survey is not responsible for the accuracy of the records, information, or opinions that may be contained in the files. The Survey collects, catalogs, and archives data on mineral properties regardless of its views of the veracity or accuracy of those data.

PRINTED: 09/12/2002

ARIZONA DEPARTMENT OF MINES AND MINERAL RESOURCES AZMILS DATA

PRIMARY NAME: WUPATKI NE - 3

ALTERNATE NAMES:

COCONINO COUNTY MILS NUMBER: 470

LOCATION: TOWNSHIP 27 N RANGE 10 E SECTION 20 QUARTER SW
LATITUDE: N 35DEG 42MIN 17SEC LONGITUDE: W 111DEG 20MIN 37SEC
TOPO MAP NAME: WUPATKI NE - 7.5 MIN

CURRENT STATUS: UNKNOWN

COMMODITY:
UNKNOWN

BIBLIOGRAPHY:

PRINTED: 05/21/2001

ARIZONA DEPARTMENT OF MINES AND MINERAL RESOURCES AZMILS DATA

PRIMARY NAME: WUPATKI NE NO. 3 BORROW PIT

ALTERNATE NAMES:

COCONINO COUNTY MILS NUMBER: 471

LOCATION: TOWNSHIP 27 N RANGE 10 E SECTION 22 QUARTER SW
LATITUDE: N 35DEG 42MIN 17SEC LONGITUDE: W 111DEG 18MIN 58SEC
TOPO MAP NAME: WUPATKI NE - 7.5 MIN

CURRENT STATUS: UNKNOWN

COMMODITY: SAND & GRAVEL BORROW

BIBLIOGRAPHY:
ADMMR WUPATKI NE NO. 3 BORROW PIT FILE

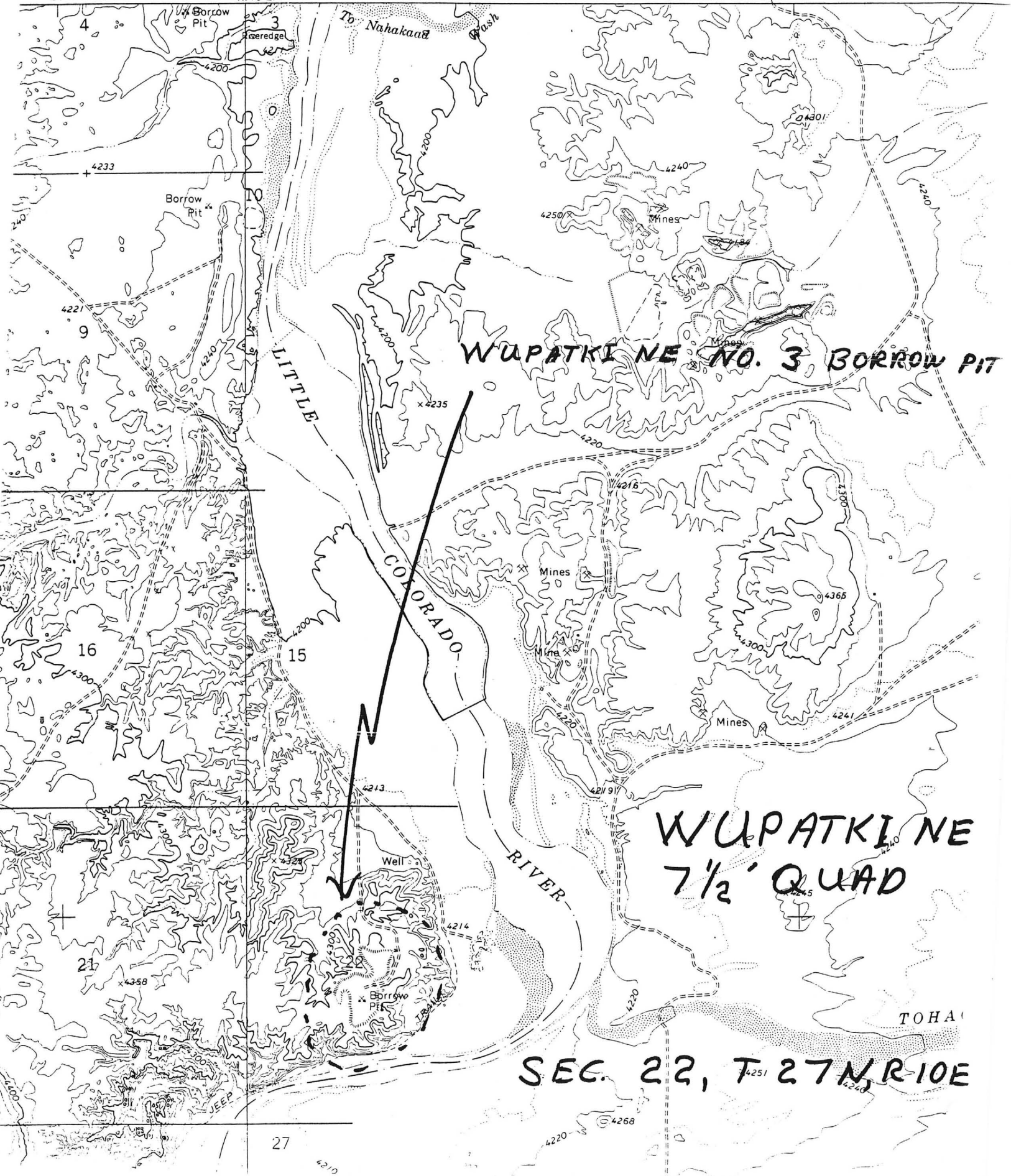
20' 470

R. 10 E. 471

3755 IV
(CAMERON 1:62 500)

CAMERON 13 MI. 17'30"

474



WUPATKI NE NO. 3 BORROW PIT

WUPATKI NE
7 1/2' QUAD

SEC. 22, T 27 N, R 10 E

Arizona Department of Mines and Mineral Resources

MINE AND PROSPECT FIELD VISIT DATA SUMMARY

Sheet 1 of 2

COMMODITIES: Stone - Basalt

MILS ID No.: Coconino #471

DATE: May 15, 1990

ENGINEER: Ken Phillips

INFORMATION FROM: Field visit May 1989

PROPERTY SUMMARY

I. MINE NAME: Wupatki NE #3 Borrow Pit

OTHER POSSIBLE NAMES
INCL. ANY CLAIM NAMES NOTED:II. LOCATION: T 27N R 10E SEC(S): W²⁷₁ MINE DISTRICTELEV.: 4300' COUNTY Coconino TOPO QUAD Wupatki NE 7¹/₂'

DIRECTIONS:

MAP ATTACHED:

III. OWNERSHIP: NAME Believed to be Babbit Ranch PHONE:

ADDRESS:

COMPANY NAME IF ANY:

PERTINENT PEOPLE:

IV. PROPERTY AND HOLDINGS: Private lease

V. PAST PRODUCTION-NOTED, KNOWN, PROBABLE, UNKNOWN, NONE: Several
thousand ton for highway construction useVI. CURRENT STATUS: In operation to supply material for highway
resurfacing projectVII. WORKINGS: Pit approximately 300' x 300' x 30 feet deep along
the south wall

Sheet 2 of 2

VIII GEOLOGY AND MINERALOGY: DEPOSIT TYPE: Basalt flow

LENGTH: Extensive WIDTH STRIKE DIP

HOST ROCK: Basalt

ECONOMIC MINERALS: Basalt with few to no vesicles and nearly free
of caliche contamination.

COMMENTS: Material was sampled for possible use in Sahuaro
Petroleum's slurry seal program. A whole rock analysis was
done on sample ADMMR 28239

IX. EQUIPMENT ON SIGHT: Movable crushing and screening plant to produce
material for highway construction.

X. SAMPLING: NOTE TYPE IF ANY, DRILLING?

XI. REFERENCES AND REMARKS:

Bondar-Clegg & Company Ltd.
130 Pemberton Ave.
North Vancouver, B.C.
V7P 2R5
(604) 985-0681 Telex 04-352667



**Geochemical
Lab Report**

ARIZONA DEPARTMENT OF MINES
MR. KEN PHILLIPS
MINERAL BUILDING,
FAIRGROUNDS
PHOENIX, AZ. 85007

RECEIVED

JUN 14 1989

DEPT. OF MINES &
MINERAL RESOURCES

Bondar-Clegg & Company Ltd.
130 Pemberton Ave.
North Vancouver, B.C.
V7P 2R5
(604) 985-0681 Telex 04-352667



Geochemical Lab Report

REPORT: V89-01868.0 (COMPLETE)

REFERENCE INFO:

CLIENT: ARIZONA DEPARTMENT OF MINES
PROJECT: NONE GIVEN

SUBMITTED BY: K.PHILLIPS
DATE PRINTED: 9-JUN-89

ORDER	ELEMENT		NUMBER OF ANALYSES	LOWER DETECTION LIMIT	EXTRACTION	METHOD
1	Al2O3	Alumina (Al2O3)	2	0.01 PCT	BORATE FUSION	Plasma Emission Spec
2	CaO	Calcium (CaO)	2	0.01 PCT	BORATE FUSION	Plasma Emission Spec
3	Fe2O3	Total Iron as Fe2O3	2	0.01 PCT	BORATE FUSION	Plasma Emission Spec
4	K2O	Potassium (K2O)	2	0.01 PCT	BORATE FUSION	Plasma Emission Spec
5	LOI	Loss On Ignition	2	0.01 PCT		Gravimetric
6	MgO	Magnesium (MgO)	2	0.01 PCT	BORATE FUSION	Plasma Emission Spec
7	MnO	Manganese (MnO)	2	0.01 PCT	BORATE FUSION	Plasma Emission Spec
8	Na2O	Sodium (Na2O)	2	0.01 PCT	BORATE FUSION	Plasma Emission Spec
9	P2O5	Phosphorous (P2O5)	2	0.01 PCT	BORATE FUSION	Plasma Emission Spec
10	SiO2	Silica	2	0.01 PCT	BORATE FUSION	Plasma Emission Spec
11	TiO2	Titanium (TiO2)	2	0.01 PCT	BORATE FUSION	Plasma Emission Spec
12	Totals	Whole Rock Totals	2	0.01 PCT		
13	Ba	Barium	2	0.01 PCT	BORATE FUSION	Plasma Emission Spec
14	Cr	Chromium	2	0.01 PCT	BORATE FUSION	Plasma Emission Spec
15	S tot	Sulfur (Total)	2	0.02 PCT		Leco

SAMPLE TYPES	NUMBER	SIZE FRACTIONS	NUMBER	SAMPLE PREPARATIONS	NUMBER
R ROCK OR BED ROCK	2	2 -150	2	PULVERIZING	2

REPORT COPIES TO: MR. KEN PHILLIPS

INVOICE TO: MR. KEN PHILLIPS

Bondar-Clegg & Company Ltd.
130 Pemberton Ave.
North Vancouver, B.C.
V7P 2R5
(604) 985-0681 Telex 04-352667



Geochemical Lab Report

REPORT: V89-01868.0

PROJECT: NONE GIVEN

PAGE 1A

SAMPLE NUMBER	ELEMENT UNITS	Al2O3 PCT	CaO PCT	Fe2O3 PCT	K2O PCT	LOI PCT	MgO PCT	MnO PCT	Na2O PCT	P2O5 PCT	SiO2 PCT	TiO2 PCT
R2 ADMMR 28239		13.19	0.92	1.54	5.00	0.92	0.21~	0.06	4.07	0.02	73.58	0.30
R2 ADMMR 28240	<i>Australia</i>	14.98	6.44	10.72	1.65	2.31	7.42	0.12	3.87	0.49	50.21	1.66

COCONINO AZ MILLS #471

Bondar-Clegg & Company Ltd.
130 Pemberton Ave.
North Vancouver, B.C.
V7P 2R5
(604) 985-0681 Telex 04-352667



Geochemical Lab Report

REPORT: V89-01868.0

PROJECT: NONE GIVEN

PAGE 1B

SAMPLE NUMBER	ELEMENT UNITS	Totals PCT	Ba PCT	Cr PCT	S tot PCT
R2 ADMMR 28239		99.81	0.03	0.01	<0.02
R2 ADMMR 28240		99.87	0.04	0.04	<0.02