



CONTACT INFORMATION

Mining Records Curator
Arizona Geological Survey
1520 West Adams St.
Phoenix, AZ 85007
602-771-1601
<http://www.azgs.az.gov>
inquiries@azgs.az.gov

The following file is part of the

Arizona Department of Mines and Mineral Resources Mining Collection

ACCESS STATEMENT

These digitized collections are accessible for purposes of education and research. We have indicated what we know about copyright and rights of privacy, publicity, or trademark. Due to the nature of archival collections, we are not always able to identify this information. We are eager to hear from any rights owners, so that we may obtain accurate information. Upon request, we will remove material from public view while we address a rights issue.

CONSTRAINTS STATEMENT

The Arizona Geological Survey does not claim to control all rights for all materials in its collection. These rights include, but are not limited to: copyright, privacy rights, and cultural protection rights. The User hereby assumes all responsibility for obtaining any rights to use the material in excess of "fair use."

The Survey makes no intellectual property claims to the products created by individual authors in the manuscript collections, except when the author deeded those rights to the Survey or when those authors were employed by the State of Arizona and created intellectual products as a function of their official duties. The Survey does maintain property rights to the physical and digital representations of the works.

QUALITY STATEMENT

The Arizona Geological Survey is not responsible for the accuracy of the records, information, or opinions that may be contained in the files. The Survey collects, catalogs, and archives data on mineral properties regardless of its views of the veracity or accuracy of those data.

PRINTED: 09/12/2002

ARIZONA DEPARTMENT OF MINES AND MINERAL RESOURCES AZMILS DATA

PRIMARY NAME: WINIFRED MINE

ALTERNATE NAMES:

SANTA CRUZ COUNTY MILS NUMBER: 215

LOCATION: TOWNSHIP 23 S RANGE 16 E SECTION 28 QUARTER NW
LATITUDE: N 31DEG 24MIN 08SEC LONGITUDE: W 110DEG 43MIN 00SEC
TOPO MAP NAME: LOCHIEL - 15 MIN

CURRENT STATUS: PAST PRODUCER

COMMODITY:
COPPER OXIDE

BIBLIOGRAPHY:
USGS LOCHIEL QUAD
USBM FIELD NOTES
AZBM CARD FILE SANTA CRUZ CO.
SCHRADER, F.C., 1915, USGS BULL. 582, P. 320
ADMMR WINIFRED MINE FILE
ADMMR "U" FILE CU 13 NOT MAPPED
USGS PP 658-E, P. 3

02/21/91

ARIZONA DEPARTMENT OF MINES AND MINERAL RESOURCES FILE DATA

PRIMARY NAME: WINIFRED MINE

ALTERNATE NAMES:

SANTA CRUZ COUNTY MILS NUMBER: 215

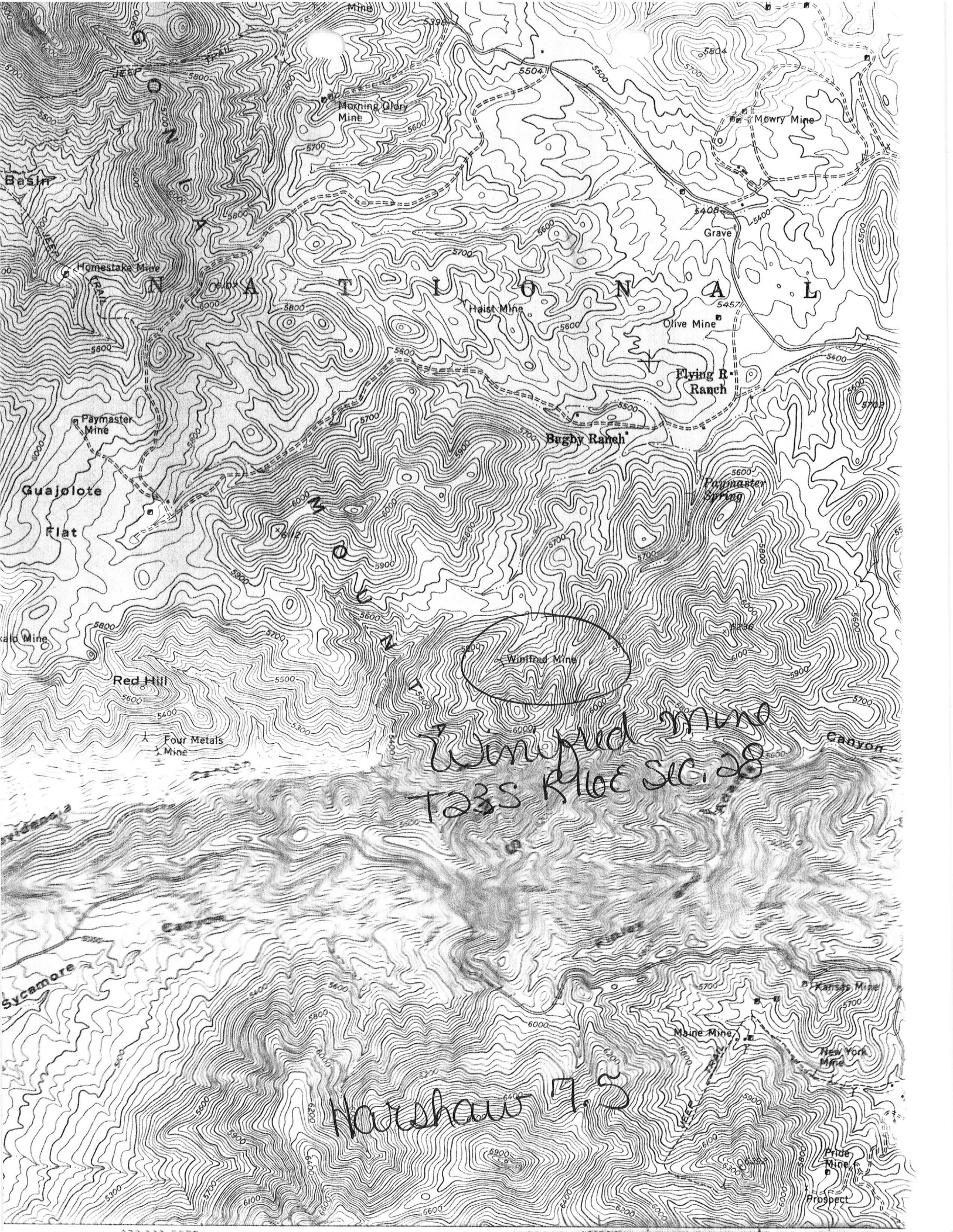
LOCATION: TOWNSHIP 23 S RANGE 16 E SECTION 28 QUARTER NW
LATITUDE: N 31DEG 24MIN 08SEC LONGITUDE: W 110DEG 43MIN 00SEC
TOPO MAP NAME: LOCHIEL - 15 MIN

CURRENT STATUS: PAST PRODUCER

COMMODITY:
COPPER

BIBLIOGRAPHY:

USGS LOCHIEL QUAD
USBM FIELD NOTES
AZBM CARD FILE SANTA CRUZ CO.
SCHRADER, F.C., 1915, USGS BULL. 582,
P. 320-321
ADMMR WINIFRED MINE FILE
USGS PP 658-E, P. 3



Basin

Guajolote Flat

Red Hill

Four Metals Mine

Sycamore Canyon

Nashua 7.5

Winifred mine
T23S R10E SEC. 28

Mine

Morning Glory Mine

Mowry Mine

Homestake Mine

Paymaster Mine

Haist Mine

Olive Mine

Flying R Ranch

Bugby Ranch

Paymaster Spring

Winifred Mine

Canyon

Maine Mine

Kansas Mine

New York Mine

Pride Mine

Prospect

Grave

Old Mine

Basin

Basin

Old Mine

Sycamore Canyon

Prospect

Basin

Basin

Old Mine

Sycamore Canyon

Prospect

WINIFRED MINE

9/84

SANTA CRUZ COUNTY
PATAGONIA DISTRICT
T23S R16E Sec. 28

MILS Santa Cruz Index #215

USGS Bull. 582, p. 320-321

USGS PP 658-E, p. 3

Harshaw 7.5 (included in file)

* GENERAL REFERENCES

- REFERENCE 1 F1 < USBM FILES, WINIFRED MINE
- REFERENCE 2 F2 < SCHRADER, F.C., 1915, USGS BULL. 582, p. 320-321
- REFERENCE 3 F3 < SIMONS, F.S., 1972, USGS PROFESSIONAL PAPER 658-E, p. 3
- REFERENCE 4 F4 < SIMONS, FRANK S., 1974, GEOLOGIC MAP AND SECTIONS OF THE NOGALES AND LOCHIEL QUADRANGLE SANTA CRUZ COUNTY, ARIZONA; USGS MAP I-762 (1:48000)

K5 < RHYOLITE >

N75 < LOCALLY MUCH ALTERED TO HORNBLANDE AND MAGNETITE; RHYOLITE PORPHYRY IS VITREOUS.

N80 < IRREGULAR BODIES >

N85 < SHOW NO MINERALIZATION OTHER THAN MINOR AMOUNTS OF IRON STAINING ON GULGE OF E-W FAULT, WHICH IS ABOUT 7 INCHES WIDE >

miles # 015

U.S. CRIB-SITE FORM

RECORD IDENTIFICATION

RECORD NUMBER B10 < > RECORD TYPE B20 < X, I, M > DEPOSIT NUMBER B40 < >
 REPORT DATE G1 < 3, 2, 0, 4 > INFORMATION SOURCE B30 < 1, 2, > FILE LINK IDENT. B50 < USBM-0040230408 >
 (YR. MO.)
 REPORTER (SUPERVISOR) G2 < CALDER, SUSAN R. > (last, first, middle initial) (last, first, middle initial)
 REPORTER AFFILIATION G5 < ABG-MT > SITE NAME A10 < WINIFRED MINE >
 SYNONYMS A11 < >

LOCATION

MINING DISTRICT/AREA A30 < PATAGONIA DISTRICT >
 COUNTY A60 < SANTA CRUZ > STATE A50 < AZ > COUNTRY A40 < U. S. >
 PHYSIOGRAPHIC PROV A63 < 1, 2, >
 DRAINAGE AREA A62 < 1, 5, 0, 5, 0, 3, 0, 1, > LOWER COLORADO LAND STATUS A64 < 4, 1, >
 QUADRANGLE NAME A90 < LOCHIEL > (1, 9, 5, 8,) QUADRANGLE SCALE A100 < 6, 2, 5, 0, 0, >
 SECOND QUAD NAME A92 < HARSHAW > (1, 9, 4, 8,) SECOND QUAD SCALE A91 < 2, 4, 0, 0, 0, >
 ELEVATION A107 < 5, 7, 5, 0, > FT.

UTM *ACCURACY GEODETTIC
 *NORTHING A120 < 3, 4, 7, 4, 0, 0, 0, > ACCURATE ACC (circle) (circle) LATITUDE A70 < 3, 1, - 2, 4, - 0, 7, N, >
 *EASTING A130 < 5, 2, 6, 9, 2, 5, > ESTIMATED EST < > LONGITUDE A80 < 1, 1, 0, - 4, 3, - 0, 0, W, >
 *ZONE NUMBER A110 < 1, 1, 2, >

CADASTRAL
 *TOWNSHIP(S) A77 < 0, 2, 3, 5, > RANGE(S) A78 < 0, 1, 6, E, >
 *SECTION(S) A79 < 28 >
 *SECTION FRACTION(S) A76 < SE OF NW >
 *MERIDIAN(S) A81 < GILA AND SALT RIVER >

POSITION FROM NEAREST PROMINENT LOCALITY A82 < 2.0 MILES NW OF WASHINGTON CAMP >
 LOCATION COMMENTS A83 < 3.5 MILES SSW OF MOWRY MINE, IN THE HEAD OF A SMALL CANYON AT SW HEAD OF MOWRY WASH >

* ESSENTIAL INFORMATION
 + ESSENTIAL SOMETIMES OR HIGHLY RECOMMENDED

COMMODITY INFORMATION

*COMMODITIES PRESENT C10 < C U >
 *ORE MINERALS C30 < AZURITE, MALACHITE, COPRITE >
 COMMODITY SUBTYPES C41 < >
 *GEN. ANALYTICAL DATA C43 < ORE SHIPPED IN 1904 BY G. GROSS SAID TO HAVE AVERAGED 80% CU >
 COM. INFO. COMMENTS C50 < >

* SIGNIFICANCE

	PRODUCER	NON-PRODUCER
MAJOR PRODUCTS	MAJOR < C U >	MAIN COMMODITIES PRESENT C11 < >
MINOR PRODUCTS	MINOR < >	MINOR COMMODITIES PRESENT C12 < >
POTENTIAL PRODUCTS	POTEN < >	
OCCURRENCES	OCCUR < >	OCCUR < >

*PRODUCTION

	PRODUCER	NON-PRODUCER
PRODUCTION YES (circle)	PRODUCTION SIZE SML MED LGE (circle one)	PRODUCTION UND NO (circle one)

*STATUS

	PRODUCER	EXPLORATION OR DEVELOPMENT	NON-PRODUCER
	STATUS AND ACTIVITY A20 < 4 >		STATUS AND ACTIVITY A20 < >

*DISCOVERER L20 < >
 *YEAR OF DISCOVERY L10 < > *NATURE OF DISCOVERY L30 < > *YEAR OF FIRST PRODUCTION L40 < > *YEAR OF LAST PRODUCTION L45 < >
 *PRESENT/LAST OWNER A12 < >
 *PRESENT/LAST OPERATOR A13 < >
 *EXPL./DEV.COMMENTS L110 < OWNERS INCLUDED GEORGE GROSS (1905), FOUR METALS MINING CO. (1905-1915); PRODUCTION DATA NOT AVAILABLE; SOME ORE SHIPPED IN 1904 >

DESCRIPTION OF DEPOSIT

*DEPOSIT TYPE(S) C40 < SHEAR ZONE; STRATABOUND >
 *DEPOSIT FORM/SHAPE M10 < TABULAR; IRREGULAR >
 *DEPTH TO TOP M20 < > *UNITS M21 < > *MAXIMUM LENGTH M40 < > *UNITS M41 < >
 *DEPTH TO BOTTOM M30 < > *UNITS M31 < > *MAXIMUM WIDTH M50 < 6 > *UNITS M51 < FT >
 *DEPOSIT SIZE M15 < SMALL > M15 < MEDIUM > M15 < LARGE > (circle one) *MAXIMUM THICKNESS M60 < > *UNITS M61 < >
 *STRIKE M70 < > *DIP M80 < 20 ENE >
 *DIRECTION OF PLUNGE M100 < > *PLUNGE M90 < >
 *REP. DESC. COMMENTS M110 < ORE CONTAINED IN NEARLY FLAT-LYING BODY OF ORE BED THAT DIPS 20 ENE >

DESCRIPTION OF WORKINGS

*Workings are: SURFACE M120 UNDERGROUND M130 BOTH M140 (circle one) *OVERALL LENGTH M190 < > *UNITS M191 < >
 *DEPTH BELOW SURFACE M160 < > *UNITS M161 < > *OVERALL WIDTH M200 < > *UNITS M201 < >
 *LENGTH OF WORKINGS M170 < 1000 > *UNITS M171 < FT > *OVERALL AREA M210 < > *UNITS M211 < >
 *DESC. OF WORK. COM. M220 < DEVELOPED BY 1000 FT OF TUNNELS, DRIFTS, AND STOPES, MOSTLY ON LOWER LEVEL (ELEVATION 5725 FT.); LOWER LEVEL CONTAINS 415-FT TUNNEL DRIVEN TO SOUTH WITH 175 FT. OF DRIFT IN WHICH THERE IS A 60-FT WINZE >

GEOLOGY

*AGE OF HOST ROCK(S) K1 < T.R.I. - JUR. >
 *HOST ROCK TYPE(S) K1A < SILICIFIED SHALE AND QUARTZITE >
 *AGE OF IGNEOUS ROCK(S) K2 < T.R.I. - JUR. >
 *IGNEOUS ROCK TYPE(S) K2A < RHYOLITIC, ALKALI RHYOLITIC, AND QUARTZ LATITIC LAVA, TUFF, AND VITREOUS PORPHYRY >
 *AGE OF MINERALIZATION K3 < L.C.R.E.T. - TERT. >
 *PERT. MINERALS (NOT ORE) K4 < LIMONITE; ORE MINERALS IN BANDED QUARTZ GANGUE >
 *ORE CONTROL/LOCUS K5 < ORE BODY IS INTERBEDDED IN SILICIFIED SEDIMENTARY ROCKS AND CAPPED BY >
 *MAJ. REG. TRENDS/STRUCT. N6 < SANDSTONE AND QUARTZ-RICH TUFFACEOUS SANDSTONE INTERLAYERED WITH VOLCANIC ROCKS >
 *TECTONIC SETTING N15 < UX RANCHA FAULT BLOCK >
 *SIGNIFICANT LOCAL STRUCT. N70 < SEDIMENTARY BEDS IN VICINITY STRIKE N9E-SSW AND DIP 30 NW >
 *SIGNIFICANT ALTERATION N75 < SEDIMENTARY ROCKS VARIABLY REPLACED BY EPIDOTE AND TOURMALINE; VOLCANIC ROCKS >
 *PROCESS OF CONC./ENRICH. N80 < MINERALIZATION ALONG BEDDING PLANES AND FAULT FISSURES; CONCENTRATION IN LARGE >
 *FORMATION AGE N30 < >
 *FORMATION NAME N30A < >
 *SECOND FM AGE N35 < >
 *SECOND FM NAME N35A < >
 *IGNEOUS UNIT AGE N50 < >
 *IGNEOUS UNIT NAME N50A < >
 *SECOND IG. UNIT AGE N55 < >
 *SECOND IG. UNIT NAME N55A < >
 *GEOLOGY COMMENTS N85 < LOWER MINE WORKINGS ARE PRINCIPALLY IN ALTERED RHYOLITE UNDERLAIN BY QUARTZITE AND TRAVERSED BY SEVERAL N-S FISSURES AND AN E-W FAULT; THESE WORKINGS >

GENERAL COMMENTS

GENERAL COMMENTS GEN < >