



## **CONTACT INFORMATION**

Mining Records Curator  
Arizona Geological Survey  
1520 West Adams St.  
Phoenix, AZ 85007  
602-771-1601  
<http://www.azgs.az.gov>  
[inquiries@azgs.az.gov](mailto:inquiries@azgs.az.gov)

The following file is part of the

Arizona Department of Mines and Mineral Resources Mining Collection

## **ACCESS STATEMENT**

These digitized collections are accessible for purposes of education and research. We have indicated what we know about copyright and rights of privacy, publicity, or trademark. Due to the nature of archival collections, we are not always able to identify this information. We are eager to hear from any rights owners, so that we may obtain accurate information. Upon request, we will remove material from public view while we address a rights issue.

## **CONSTRAINTS STATEMENT**

The Arizona Geological Survey does not claim to control all rights for all materials in its collection. These rights include, but are not limited to: copyright, privacy rights, and cultural protection rights. The User hereby assumes all responsibility for obtaining any rights to use the material in excess of "fair use."

The Survey makes no intellectual property claims to the products created by individual authors in the manuscript collections, except when the author deeded those rights to the Survey or when those authors were employed by the State of Arizona and created intellectual products as a function of their official duties. The Survey does maintain property rights to the physical and digital representations of the works.

## **QUALITY STATEMENT**

The Arizona Geological Survey is not responsible for the accuracy of the records, information, or opinions that may be contained in the files. The Survey collects, catalogs, and archives data on mineral properties regardless of its views of the veracity or accuracy of those data.

PRINTED: 09/12/2002

ARIZONA DEPARTMENT OF MINES AND MINERAL RESOURCES AZMILS DATA

PRIMARY NAME: WING MINE

ALTERNATE NAMES:  
NO NAME CLAIM

COCHISE COUNTY MILS NUMBER: 894

LOCATION: TOWNSHIP 15 S RANGE 21 E SECTION 18 QUARTER SW  
LATITUDE: N 32DEG 07MIN 25SEC LONGITUDE: W 110DEG 14MIN 20SEC  
TOPO MAP NAME: SAN PEDRO RANCH - 7.5 MIN

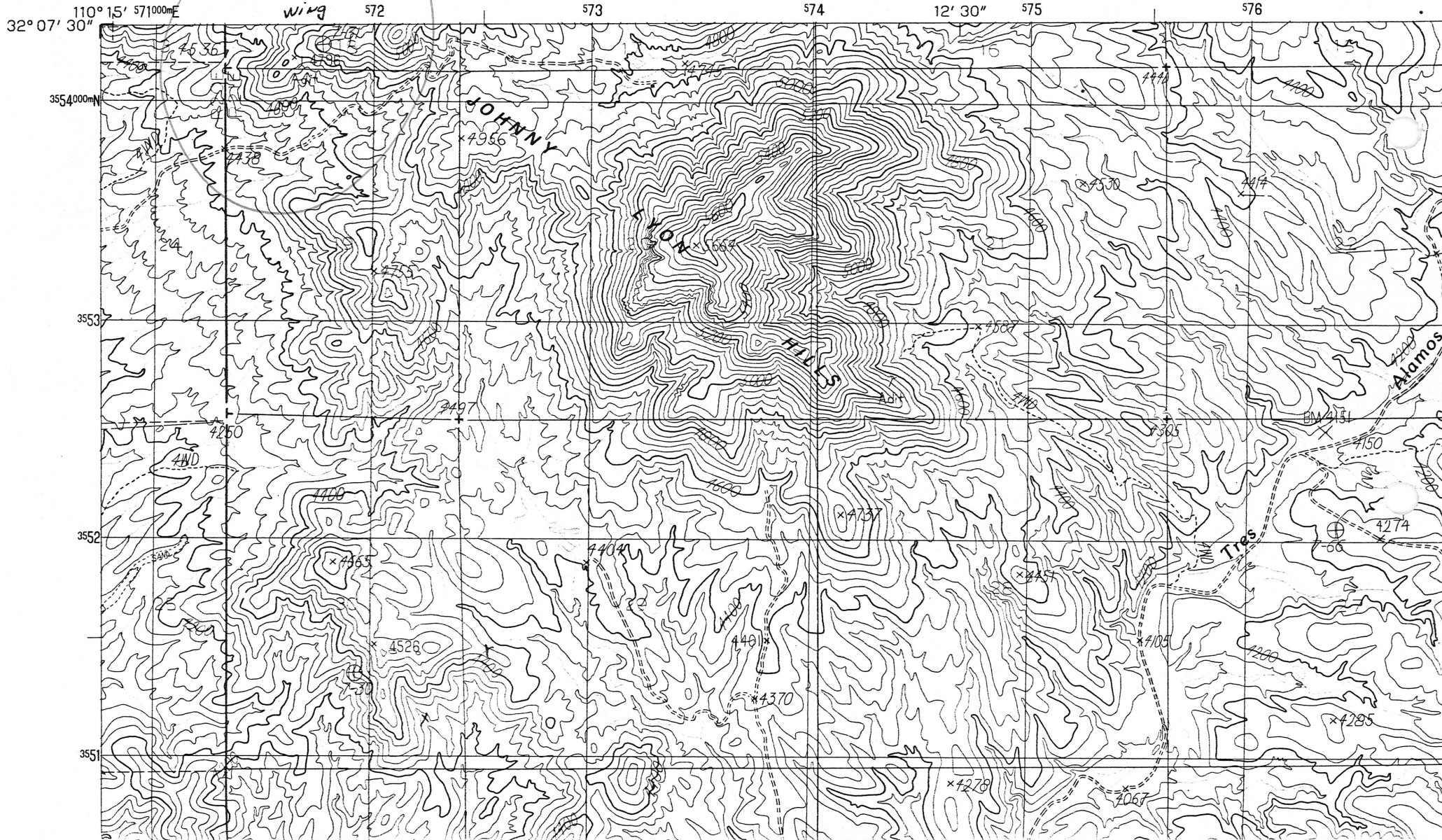
CURRENT STATUS: RAW PROSPECT

COMMODITY:  
GOLD

BIBLIOGRAPHY:  
ADMMR WING MINE FILE  
USGS PP 416, P 162

UNITED STATES  
DEPARTMENT OF THE INTERIOR  
GEOLOGICAL SURVEY

*wing  
mine*



ARIZONA DEPARTMENT OF MINES AND MINERAL RESOURCES

VERBAL INFORMATION SUMMARY (SHORT FORM)

May be Reproduced

May Be Inserted Into Mine File Or Added To "Rumor Page"

1. Information from: Don Hearn

Address: P.O. Box 658

Benson, AZ 85602

2. Phone: 586-3326

3. Mine: Wing

4. ADMMR Mine File: WING MINE

5. County: Cochise

6. MILS Number 894

7. Operational Status: Raw Prospect

8. Summary of information received, comments, etc.: Don Hearn reported

that an old man named John Wing worked this property for gold over a

number of years. He thought that Wing may have made a living at the mine

for a while. Current claims are held by Marion Keith, local rancher, and

are called No Name.

\_\_\_\_\_

\_\_\_\_\_

\_\_\_\_\_

\_\_\_\_\_

\_\_\_\_\_

\_\_\_\_\_

\_\_\_\_\_

\_\_\_\_\_

\_\_\_\_\_

Date: February 21, 1989

Harrison E. Matson

(signature) ADMMR