



CONTACT INFORMATION

Mining Records Curator
Arizona Geological Survey
1520 West Adams St.
Phoenix, AZ 85007
602-771-1601
<http://www.azgs.az.gov>
inquiries@azgs.az.gov

The following file is part of the

Arizona Department of Mines and Mineral Resources Mining Collection

ACCESS STATEMENT

These digitized collections are accessible for purposes of education and research. We have indicated what we know about copyright and rights of privacy, publicity, or trademark. Due to the nature of archival collections, we are not always able to identify this information. We are eager to hear from any rights owners, so that we may obtain accurate information. Upon request, we will remove material from public view while we address a rights issue.

CONSTRAINTS STATEMENT

The Arizona Geological Survey does not claim to control all rights for all materials in its collection. These rights include, but are not limited to: copyright, privacy rights, and cultural protection rights. The User hereby assumes all responsibility for obtaining any rights to use the material in excess of "fair use."

The Survey makes no intellectual property claims to the products created by individual authors in the manuscript collections, except when the author deeded those rights to the Survey or when those authors were employed by the State of Arizona and created intellectual products as a function of their official duties. The Survey does maintain property rights to the physical and digital representations of the works.

QUALITY STATEMENT

The Arizona Geological Survey is not responsible for the accuracy of the records, information, or opinions that may be contained in the files. The Survey collects, catalogs, and archives data on mineral properties regardless of its views of the veracity or accuracy of those data.

PRINTED: 09/12/2002

ARIZONA DEPARTMENT OF MINES AND MINERAL RESOURCES AZMILS DATA

PRIMARY NAME: WINDER STONE

ALTERNATE NAMES:
PDQ STONE

YAVAPAI COUNTY MILS NUMBER: 1388

LOCATION: TOWNSHIP 21 N RANGE 9 W SECTION 31 QUARTER ALL
LATITUDE: N 35DEG 09MIN 37SEC LONGITUDE: W 113DEG 16MIN 00SEC
TOPO MAP NAME: FORT ROCK RANCH - 7.5 MIN

CURRENT STATUS: RAW PROSPECT

COMMODITY:
STONE CRUSHED
STONE LANDSCAPE
CALCIUM DOLOMITIC

BIBLIOGRAPHY:
ADMMR WINDER STONE FILE

03/18/93

ARIZONA DEPARTMENT OF MINES AND MINERAL RESOURCES FILE DATA

PRIMARY NAME: WINDER STONE

ALTERNATE NAMES:

YAVAPAI COUNTY MILS NUMBER: 1388

LOCATION: TOWNSHIP 21 N RANGE 9 W SECTION 31 QUARTER ALL
LATITUDE: N 35DEG 09MIN 37SEC LONGITUDE: W 113DEG 16MIN 00SEC
TOPO MAP NAME: FORT ROCK RANCHE - 7.5 MIN

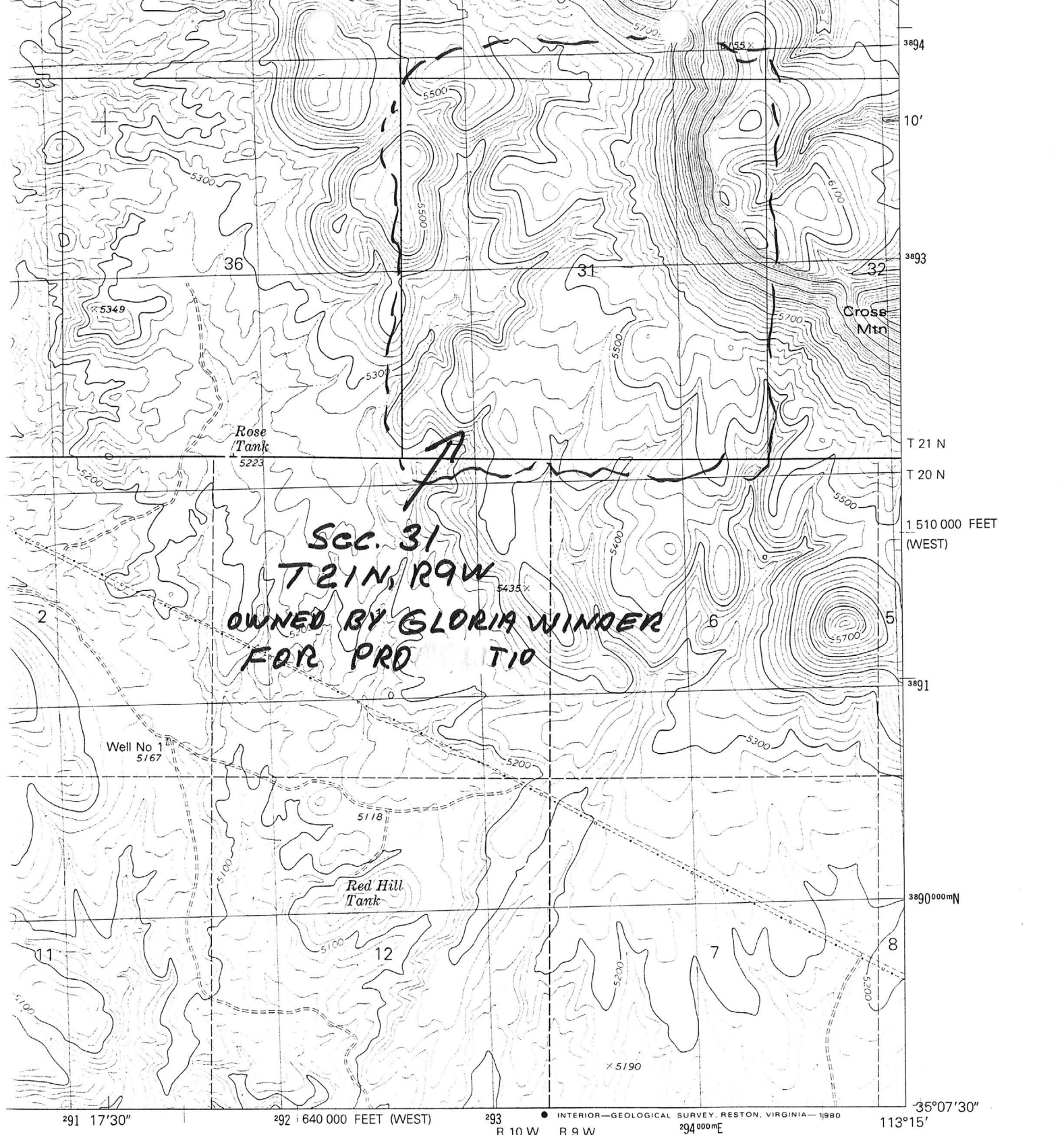
CURRENT STATUS: RAW PROSPECT

COMMODITY:

STONE CRUSHED
STONE LANDSCAPE

BIBLIOGRAPHY:

ADMMR WINDER STONE FILE



**SEC. 31
T 21 N, R 9 W
OWNED BY GLORIA WINDER
FOR PRO TIO**

1 MILE



QUADRANGLE LOCATION

ROAD CLASSIFICATION

Primary highway, hard surface	Light-duty road, hard or improved surface
Secondary highway, hard surface	Unimproved road
Interstate Route	U. S. Route
	State Route

From **FORT ROCK RANCH, ARIZ.**
 WIDE WORLD OF MAPS, INC.
 ARIZ. MAP SHOP & GALLERY
 N3507.5-W11315/7.5

Date Printed: 04/15/94

ARIZONA DEPARTMENT OF MINES AND MINERAL RESOURCES

VERBAL INFORMATION SUMMARY

Information from: Gloria A. Winder (Her husband actually)

Company: PDQ Rock and Sand
Address: 4223 E. Lynda Ave.
City, State ZIP: Arcadia, California 91006
Phone:

MINE: WINDER STONE

ADMMR Mine File: Winder Stone
County: Yavapai
AzMILS Number: 1388

SUMMARY

Mr. Winder, husband of Gloria Winder (See my Verbal Information Summary of November 20, 1992) of PDQ Sand And Gravel with an aggregate mine in Irwindale, S. California reported they are continuing the slow process of developing a landscape stone quarry on the section of land (Sec. 31, T.21N.,R.9W.) in Yavapai County they purchased.

They are currently in the process of obtaining a perpetual right of way across State Trust Lands to provide continual access to their planned operation.

Ken A. Phillips, Chief Engineer Date: April 15, 1994

Date Printed: 11/23/92

ARIZONA DEPARTMENT OF MINES AND MINERAL RESOURCES

VERBAL INFORMATION SUMMARY

Information from: **Gloria A. Winder**

Company: PDQ Rock and Sand

Address: 4223 E. Lynda Ave.

City, State ZIP: Arcadia, California 91006

Phone:

MINE: WINDER STONE

ADMMR Mine File: Winder Stone

County: **Yavapai**

AzMILS Number:

SUMMARY

Gloria Winder of PDQ Sand And Gravel with an aggregate mine in Irwindale, S. California reported she has purchased a section of land (Sec. 31, T.21N.,R.9W.) in Yavapai County from which to produce landscape crushed rock. They are currently in the aggregate business in Southern California.

She explained that the sandstones and limestones in section 31 have a great range of colors suitable for decorative landscape stone. They plan a crushing and screening plant and to do most of their marketing in Southern California.

Ken A. Phillips, Chief Engineer Date: November 20, 1992