



## **CONTACT INFORMATION**

Mining Records Curator  
Arizona Geological Survey  
1520 West Adams St.  
Phoenix, AZ 85007  
602-771-1601  
<http://www.azgs.az.gov>  
[inquiries@azgs.az.gov](mailto:inquiries@azgs.az.gov)

The following file is part of the

Arizona Department of Mines and Mineral Resources Mining Collection

## **ACCESS STATEMENT**

These digitized collections are accessible for purposes of education and research. We have indicated what we know about copyright and rights of privacy, publicity, or trademark. Due to the nature of archival collections, we are not always able to identify this information. We are eager to hear from any rights owners, so that we may obtain accurate information. Upon request, we will remove material from public view while we address a rights issue.

## **CONSTRAINTS STATEMENT**

The Arizona Geological Survey does not claim to control all rights for all materials in its collection. These rights include, but are not limited to: copyright, privacy rights, and cultural protection rights. The User hereby assumes all responsibility for obtaining any rights to use the material in excess of "fair use."

The Survey makes no intellectual property claims to the products created by individual authors in the manuscript collections, except when the author deeded those rights to the Survey or when those authors were employed by the State of Arizona and created intellectual products as a function of their official duties. The Survey does maintain property rights to the physical and digital representations of the works.

## **QUALITY STATEMENT**

The Arizona Geological Survey is not responsible for the accuracy of the records, information, or opinions that may be contained in the files. The Survey collects, catalogs, and archives data on mineral properties regardless of its views of the veracity or accuracy of those data.

PRINTED: 09/12/2002

ARIZONA DEPARTMENT OF MINES AND MINERAL RESOURCES AZMILS DATA

PRIMARY NAME: WILLYS 1-4 PLACER

ALTERNATE NAMES:

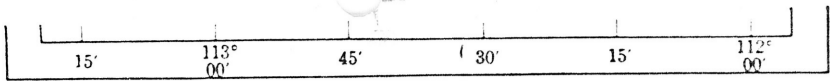
YAVAPAI COUNTY MILS NUMBER: 1282

LOCATION: TOWNSHIP 12.5N RANGE 1 W SECTION 28 QUARTER SE  
LATITUDE: N 34DEG 26MIN 14SEC LONGITUDE: W 112DEG 21MIN 40SEC  
TOPO MAP NAME: POLAND JUNCTION - 7.5 MIN

CURRENT STATUS: UNKNOWN

COMMODITY:  
GOLD PLACER

BIBLIOGRAPHY:  
ADMMR WILLYS 1-4 PLACER FILE



7-81 MILS #1282

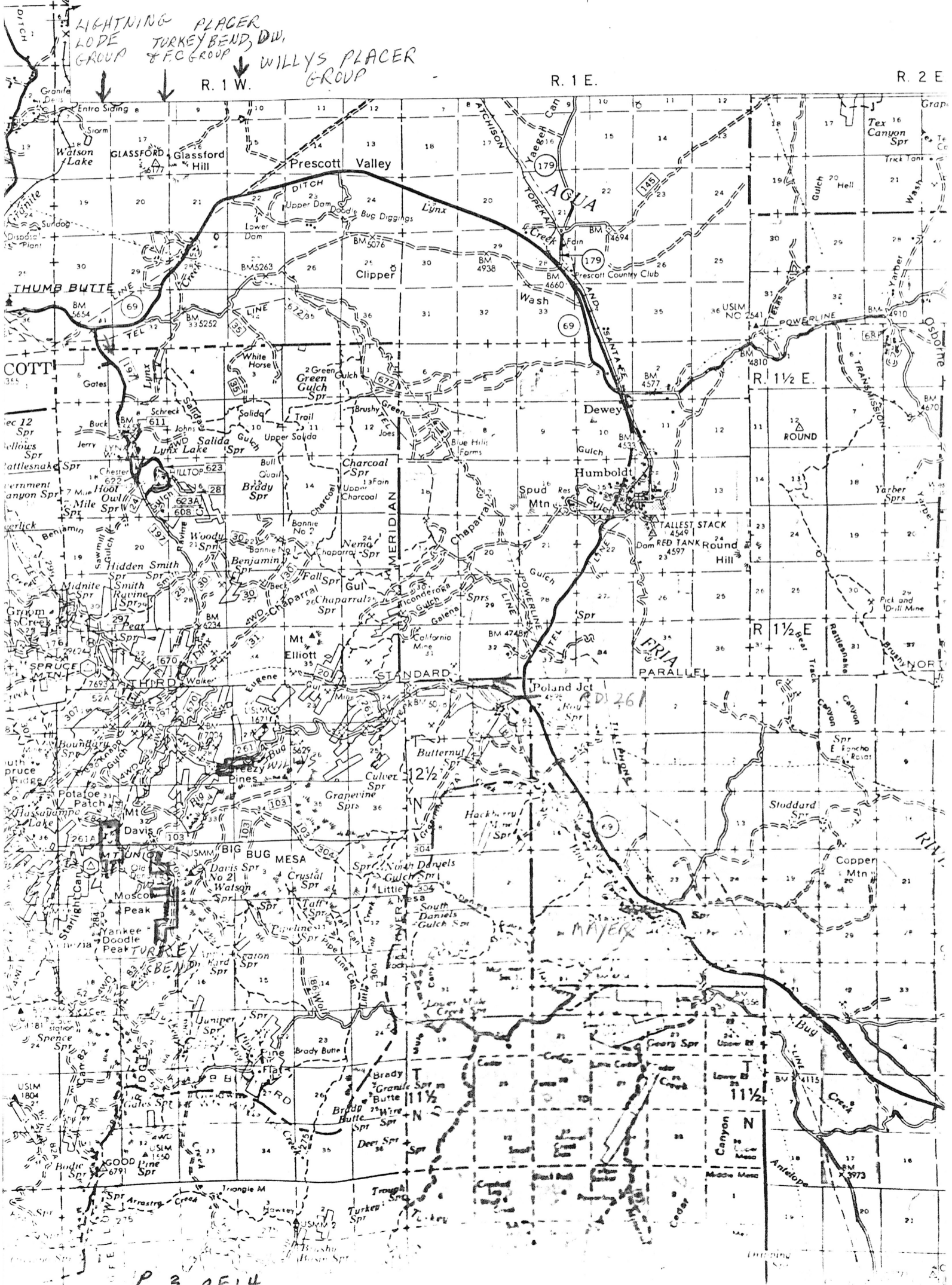
MR. CHARLES A. CARPENTER  
4301 EAST AVALON DRIVE  
PHOENIX, ARIZONA 85018

T. 15 N.

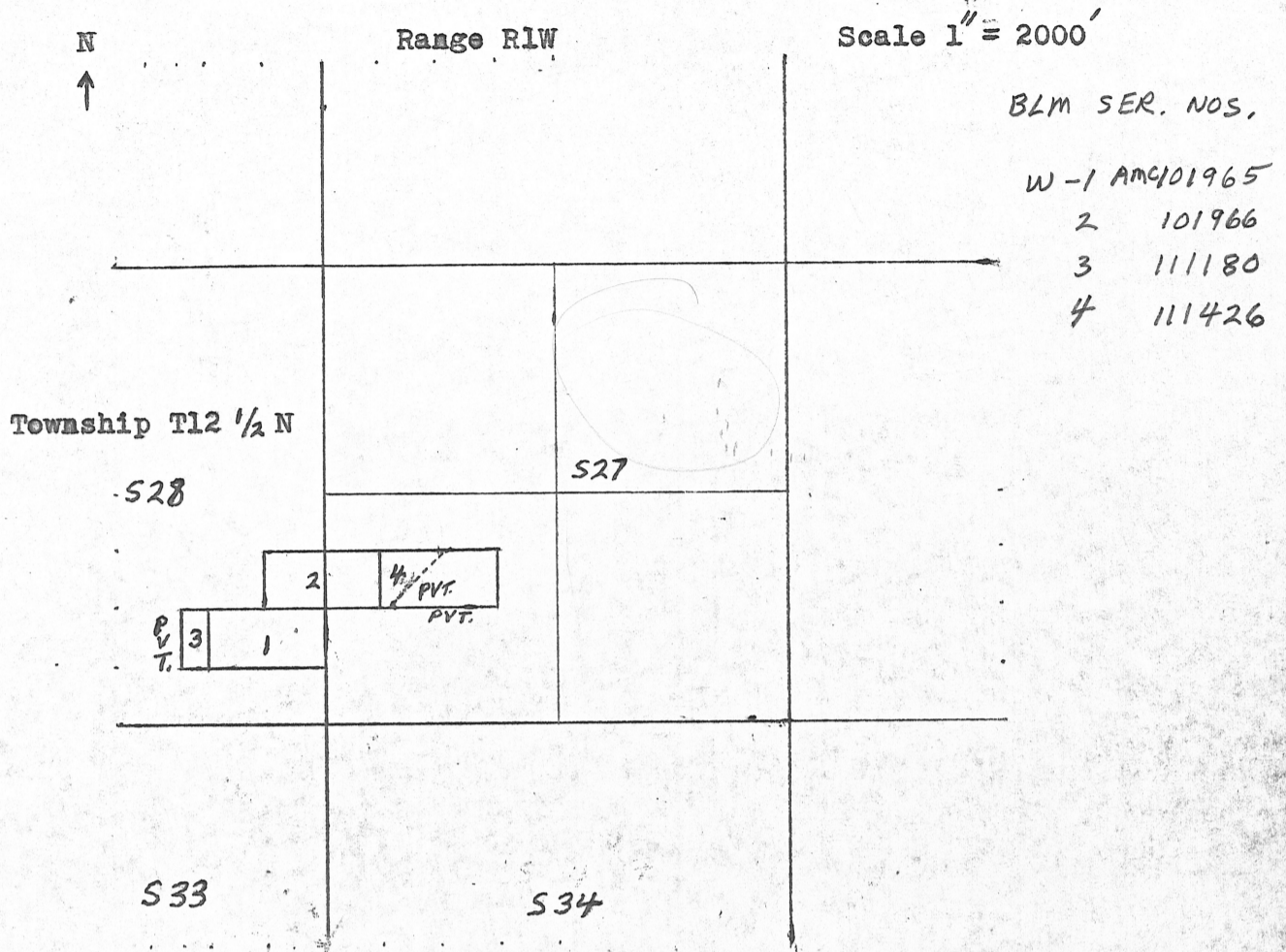
G

112°15'00"

H



PLAT OF THE WILLYS #1-4 PLACER MINING CLAIMS , BIG BUG CREEK  
 YAVAPAI COUNTY, ARIZONA



Note:

WILLYS mining claims are as drawn above except for inclusions of privately controlled or owned lands with mineral rights, withdrawn lands and patented mining claims.

Submitted by: MR. CHARLES A. CARPENTER  
 4301 EAST AVALON DRIVE  
 PHOENIX, ARIZONA 85018

Date:

GEOLOGY - SCHIST BED ROCK. ELEVATION - APPROX. 6,000'

METAL - PLACER GOLD. BLACK SANDS CONTAIN SILVER MINERALS.

ASSAYS - .01 TO .09 OZ / CU YD.

DEPOSITS - PRESENT STREAM BED AND OLDER BENCHES.  
 ESTIMATE APPROX. 15,000 CU/YDS.

WATER - CREEK. MINIMAL FLOW AFTER SPRING RUNOFF.

POWER - MEDIUM VOLTAGE POWER LINE.

TERMS - LEASE FOR FRONT MONEY. MONTHLY ADV.  
 ROYALTY AND PRODUCTION ROYALTY.

OPT. TO PURCHASE: PR. (\$45,000) EFF. UNTIL OCT. 31, 1981  
 + SMALL ROYALTY (5%)