



## **CONTACT INFORMATION**

Mining Records Curator  
Arizona Geological Survey  
1520 West Adams St.  
Phoenix, AZ 85007  
602-771-1601  
<http://www.azgs.az.gov>  
[inquiries@azgs.az.gov](mailto:inquiries@azgs.az.gov)

The following file is part of the

Arizona Department of Mines and Mineral Resources Mining Collection

## **ACCESS STATEMENT**

These digitized collections are accessible for purposes of education and research. We have indicated what we know about copyright and rights of privacy, publicity, or trademark. Due to the nature of archival collections, we are not always able to identify this information. We are eager to hear from any rights owners, so that we may obtain accurate information. Upon request, we will remove material from public view while we address a rights issue.

## **CONSTRAINTS STATEMENT**

The Arizona Geological Survey does not claim to control all rights for all materials in its collection. These rights include, but are not limited to: copyright, privacy rights, and cultural protection rights. The User hereby assumes all responsibility for obtaining any rights to use the material in excess of "fair use."

The Survey makes no intellectual property claims to the products created by individual authors in the manuscript collections, except when the author deeded those rights to the Survey or when those authors were employed by the State of Arizona and created intellectual products as a function of their official duties. The Survey does maintain property rights to the physical and digital representations of the works.

## **QUALITY STATEMENT**

The Arizona Geological Survey is not responsible for the accuracy of the records, information, or opinions that may be contained in the files. The Survey collects, catalogs, and archives data on mineral properties regardless of its views of the veracity or accuracy of those data.

ARIZONA DEPARTMENT OF MINES AND MINERAL RESOURCES AZMILS DATA

PRIMARY NAME: WHITE OAK

ALTERNATE NAMES:

WHITE OAK ADIT  
WHITE OAK NO. 1 ADIT

SANTA CRUZ COUNTY MILS NUMBER: 64B

LOCATION: TOWNSHIP 24 S RANGE 12 E SECTION 2 QUARTER NE  
LATITUDE: N 31DEG 22MIN 21SEC LONGITUDE: W 111DEG 05MIN 03SEC  
TOPO MAP NAME: RUBY - 15 MIN

CURRENT STATUS: PAST PRODUCER

COMMODITY:

LEAD  
SILVER  
COPPER  
GOLD  
ZINC  
URANIUM

BIBLIOGRAPHY:

KEITH, S.B., 1975, INDEX OF MINING PROP. IN  
SANTA CRUZ CO., AZBM  
AZBM CARD INDEX SANTA CRUZ CO.  
USGS BULL. 1147, P. A42  
ADMMR WHITE OAK FILE  
AZBM BULL 180, P. 289

WHITE OAK

SANTA CRUZ COUNTY

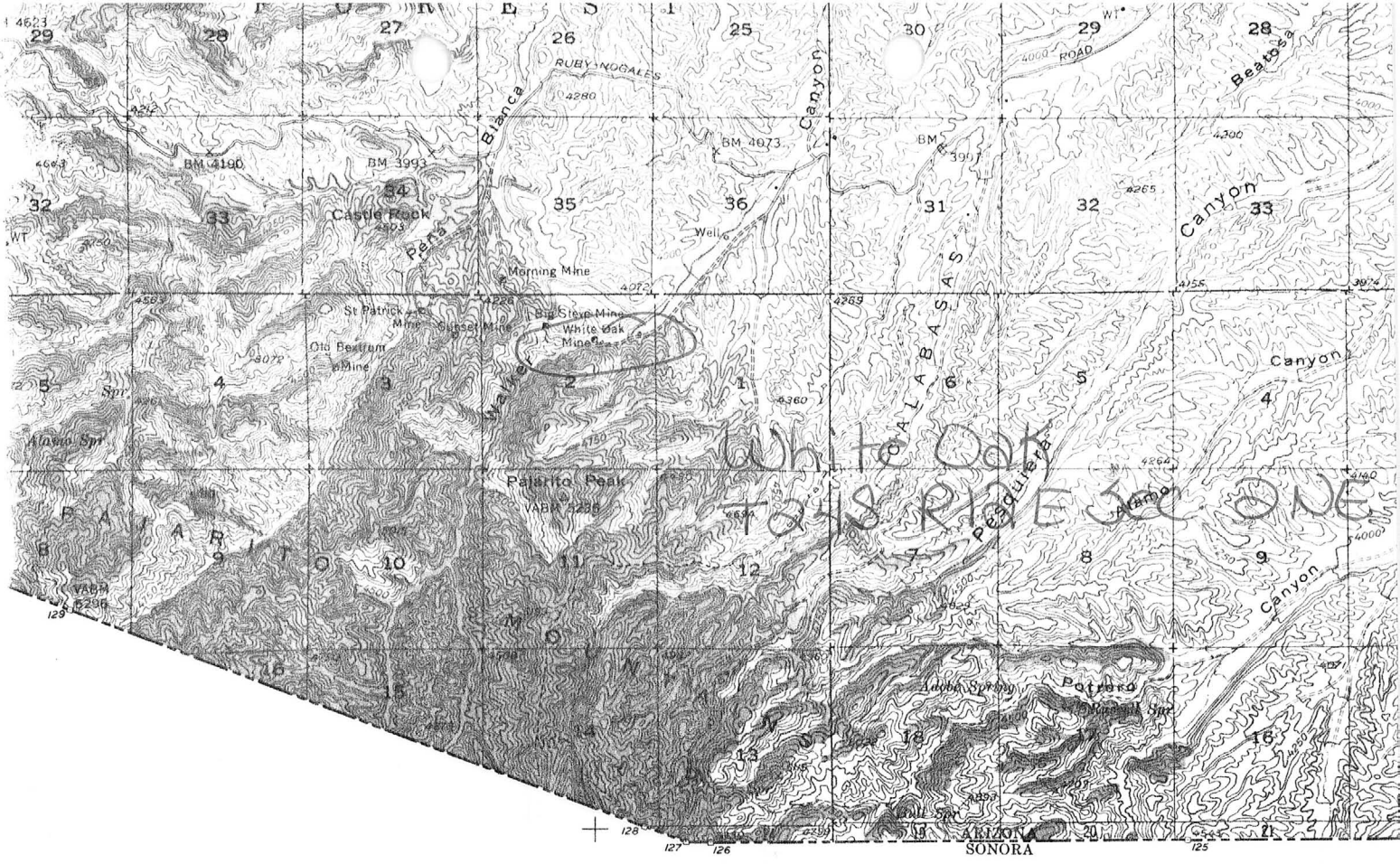
USGS Bull. 1147A p. A42

AEC 172-489 p. 30

See: Heylman, Edgar B., "The Pajarito Mining District", Geology (File)

3x3" B+W  
print

(over)



White Oak Mine  
 Pajarito Peak  
 Pajarito Canyon

Ruby 15'



WHITE OAK

SANTA CRUZ COUNTY

Joe Sirgo looking for a small property to install his flotation mill on. Is at present looking at White Oak & Big Steve mine - Sec. 2 T24S, R12E (Ruby Quad.) GWI WR 5-7-66

---

ERDA Report #TEM 511 (Microfiche) "A Lead-Uranium Deposit at the White Oak No. 1 Mine, Santa Cruz County" August 1953

---

GWI WR 5/6/80: Bruce Burris reported that Daniel V. Madrill had claimed the White Oaks, Big Steve, and St Pat Mines in Santa Cruz County.

---

\* GENERAL REFERENCES

- REFERENCE 1 F1 < USBM - AB T PRODUCTION FILE DATA
- REFERENCE 2 F2 < USBM FILE DATA - CLUSTER #19 - WHITE OAKS; CLUSTER #20 - BIG STEVE MINE
- REFERENCE 3 F3 < ADMR FILE DATA; BIG STEVE MINE FILE; WHITE OAK FILE
- REFERENCE 4 F4 < KEITH, S. B., 1975, ARM BULL. 191, P. 72

C30 < AZURITE, CHRYSOCOLLA, PYROMORPHITE, KASOLITE, URANOPHANE, AUTUNITE, DUMONTITE >

C43 < MINOR CU; SELECTED SAMPLES ASSAYED UP TO 0.82% U AND A CHIP SAMPLE ASSAYED 0.47% U >

N75 < CERUSSITE ALSO FILLS FISSURES AND PARTLY REPLACES BRECCIA AND GOUGE >

N85 < IN 2 SMALL INTERSECTING VEINS (DIPPING 75 AND 41 DEGREES) ABOUT 15 FT LONG, 6 IN WIDE AND 10 FT THICK AT THE WHITE OAK MINE. >

F5 < GRANGER, H.C. AND RAUP, P.B., 1962, USGS BULL. 1147-A, P. A42-A44 >

F6 < USAEC PRELIMINARY RECONNAISSANCE REPORT D-441, 1952, A-R-2, 1953 >

F7 < NELSON, F.S., 1963, THE GEOLOGY OF THE PENA BLANCA AND WALKER CANYON AREAS, SANTA CRUZ COUNTY, ARIZONA; UNIV. ARIZ. MS THESIS >

U.S. CRIB-SITE FORM

RECORD IDENTIFICATION

RECORD NUMBER B10 < \_\_\_\_\_ > RECORD TYPE B20 < X.I.M. > DEPOSIT NUMBER B40 < \_\_\_\_\_ >  
 REPORT DATE C1 < 8/20/5 > INFORMATION SOURCE B30 < I.A. > FILE LINK IDENT. B50 < USBM-0040230405  
 USBM-0040230114 >  
 REPORTER (SUPERVISOR) G2 < LABARA, PETER (last, first, middle initial) > (CALDER, SUSAN (last, first, middle initial) >  
 REPORTER AFFILIATION G5 < ARGMT > SITE NAME A10 < WHITE OAKS AND BIG STEVE MINES >  
 SYNONYMS A11 < OLD CLARKE; WHITE OAK ADIT. >

LOCATION

MINING DISTRICT/AREA A30 < PASARITO DISTRICT >  
 COUNTY A60 < SANTA CRUZ > STATE A50 < AZ > COUNTRY A40 < U.S. >  
 PHYSIOGRAPHIC PROV A63 < I.A. >  
 DRAINAGE AREA A62 < 15,050,300.1 >  
 QUADRANGLE NAME A90 < PASARITO PEAK, ARIZ. - SONORA (1921) > LAND STATUS A64 < H.L. (1979) >  
 SECOND QUAD NAME A92 < RUBY, ARIZ. (1957) > QUADRANGLE SCALE A100 < 24,000 >  
 ELEVATION A107 < 4,200 FT > SECOND QUAD SCALE A91 < 62,500 >

UTM  
 NORTHING A120 < 3470800 > ACCURACY  
 EASTING A130 < 492100 > ACCURATE (ACS) (circle) ESTIMATED EST  
 ZONE NUMBER A110 < 11A > GEODETIC  
 LATITUDE A70 < 31-22-24 N >  
 LONGITUDE A80 < 111-04-59 W >

CADASTRAL  
 TOWNSHIP(S) A77 < 024S > RANGE(S) A78 < 012E >  
 SECTION(S) A79 < 2 >  
 SECTION FRACTION(S) A76 < N 1/2 >  
 MERIDIAN(S) A81 < GILA AND SALT RIVER >

POSITION FROM NEAREST PROMINENT LOCALITY A82 < 1 MILE N OF PASARITO PEAK (ELV. 5236) >  
 LOCATION COMMENTS A83 < UTM TAKEN TO THE WHITE OAKS SHAFT AT THE HEAD OF WALKER CANYON; THE BIG STEVE MINE SHAFT IS ABOUT 1/4 MILE W OF THE WHITE OAKS SHAFT. >

\* ESSENTIAL INFORMATION  
 \* ESSENTIAL SOMETIMES OR HIGHLY RECOMMENDED

COMMODITY INFORMATION

\*COMMODITIES PRESENT C10 <PB, MAG, U, FLA, VZ, W, S, B, I, L, K, M, N, O, P, Q, R, S, T, U, V, W, X, Y, Z, AA, AB, AC, AD, AE, AF, AG, AH, AI, AJ, AK, AL, AM, AN, AO, AP, AQ, AR, AS, AT, AU, AV, AW, AX, AY, AZ, BA, BB, BC, BD, BE, BF, BG, BH, BI, BJ, BK, BL, BM, BN, BO, BP, BQ, BR, BS, BT, BU, BV, BW, BX, BY, BZ, CA, CB, CC, CD, CE, CF, CG, CH, CI, CJ, CK, CL, CM, CN, CO, CP, CQ, CR, CS, CT, CU, CV, CW, CX, CY, CZ, DA, DB, DC, DD, DE, DF, DG, DH, DI, DJ, DK, DL, DM, DN, DO, DP, DQ, DR, DS, DT, DU, DV, DW, DX, DY, DZ, EA, EB, EC, ED, EE, EF, EG, EH, EI, EJ, EK, EL, EM, EN, EO, EP, EQ, ER, ES, ET, EU, EV, EW, EX, EY, EZ, FA, FB, FC, FD, FE, FF, FG, FH, FI, FJ, FK, FL, FM, FN, FO, FP, FQ, FR, FS, FT, FU, FV, FW, FX, FY, FZ, GA, GB, GC, GD, GE, GF, GG, GH, GI, GJ, GK, GL, GM, GN, GO, GP, GQ, GR, GS, GT, GU, GV, GW, GX, GY, GZ, HA, HB, HC, HD, HE, HF, HG, HH, HI, HJ, HK, HL, HM, HN, HO, HP, HQ, HR, HS, HT, HU, HV, HW, HX, HY, HZ, IA, IB, IC, ID, IE, IF, IG, IH, II, IJ, IK, IL, IM, IN, IO, IP, IQ, IR, IS, IT, IU, IV, IW, IX, IY, IZ, JA, JB, JC, JD, JE, JF, JG, JH, JI, JJ, JK, JL, JM, JN, JO, JP, JQ, JR, JS, JT, JU, JV, JW, JX, JY, JZ, KA, KB, KC, KD, KE, KF, KG, KH, KI, KJ, KK, KL, KM, KN, KO, KP, KQ, KR, KS, KT, KU, KV, KW, KX, KY, KZ, LA, LB, LC, LD, LE, LF, LG, LH, LI, LJ, LK, LL, LM, LN, LO, LP, LQ, LR, LS, LT, LU, LV, LW, LX, LY, LZ, MA, MB, MC, MD, ME, MF, MG, MH, MI, MJ, MK, ML, MM, MN, MO, MP, MQ, MR, MS, MT, MU, MV, MW, MX, MY, MZ, NA, NB, NC, ND, NE, NF, NG, NH, NI, NJ, NK, NL, NM, NN, NO, NP, NQ, NR, NS, NT, NU, NV, NW, NX, NY, NZ, OA, OB, OC, OD, OE, OF, OG, OH, OI, OJ, OK, OL, OM, ON, OO, OP, OQ, OR, OS, OT, OU, OV, OW, OX, OY, OZ, PA, PB, PC, PD, PE, PF, PG, PH, PI, PJ, PK, PL, PM, PN, PO, PP, PQ, PR, PS, PT, PU, PV, PW, PX, PY, PZ, QA, QB, QC, QD, QE, QF, QG, QH, QI, QJ, QK, QL, QM, QN, QO, QP, QQ, QR, QS, QT, QU, QV, QW, QX, QY, QZ, RA, RB, RC, RD, RE, RF, RG, RH, RI, RJ, RK, RL, RM, RN, RO, RP, RQ, RR, RS, RT, RU, RV, RW, RX, RY, RZ, SA, SB, SC, SD, SE, SF, SG, SH, SI, SJ, SK, SL, SM, SN, SO, SP, SQ, SR, SS, ST, SU, SV, SW, SX, SY, SZ, TA, TB, TC, TD, TE, TF, TG, TH, TI, TJ, TK, TL, TM, TN, TO, TP, TQ, TR, TS, TT, TU, TV, TW, TX, TY, TZ, UA, UB, UC, UD, UE, UF, UG, UH, UI, UJ, UK, UL, UM, UN, UO, UP, UQ, UR, US, UT, UY, UZ, VA, VB, VC, VD, VE, VF, VG, VH, VI, VJ, VK, VL, VM, VN, VO, VP, VQ, VR, VS, VT, VU, VV, VW, VX, VY, VZ, WA, WB, WC, WD, WE, WF, WG, WH, WI, WJ, WK, WL, WM, WN, WO, WP, WQ, WR, WS, WT, WU, WV, WW, WX, WY, WZ, XA, XB, XC, XD, XE, XF, XG, XH, XI, XJ, XK, XL, XM, XN, XO, XP, XQ, XR, XS, XT, XU, XV, XW, XX, XY, XZ, YA, YB, YC, YD, YE, YF, YG, YH, YI, YJ, YK, YL, YM, YN, YO, YP, YQ, YR, YS, YT, YU, YV, YW, YX, YY, YZ, ZA, ZB, ZC, ZD, ZE, ZF, ZG, ZH, ZI, ZJ, ZK, ZL, ZM, ZN, ZO, ZP, ZQ, ZR, ZS, ZT, ZU, ZV, ZW, ZX, ZY, ZZ, AA, AB, AC, AD, AE, AF, AG, AH, AI, AJ, AK, AL, AM, AN, AO, AP, AQ, AR, AS, AT, AU, AV, AW, AX, AY, AZ, BA, BB, BC, BD, BE, BF, BG, BH, BI, BJ, BK, BL, BM, BN, BO, BP, BQ, BR, BS, BT, BU, BV, BW, BX, BY, BZ, CA, CB, CC, CD, CE, CF, CG, CH, CI, CJ, CK, CL, CM, CN, CO, CP, CQ, CR, CS, CT, CU, CV, CW, CX, CY, CZ, DA, DB, DC, DD, DE, DF, DG, DH, DI, DJ, DK, DL, DM, DN, DO, DP, DQ, DR, DS, DT, DU, DV, DW, DX, DY, DZ, EA, EB, EC, ED, EE, EF, EG, EH, EI, EJ, EK, EL, EM, EN, EO, EP, EQ, ER, ES, ET, EU, EV, EW, EX, EY, EZ, FA, FB, FC, FD, FE, FF, FG, FH, FI, FJ, FK, FL, FM, FN, FO, FP, FQ, FR, FS, FT, FU, FV, FW, FX, FY, FZ, GA, GB, GC, GD, GE, GF, GG, GH, GI, GJ, GK, GL, GM, GN, GO, GP, GQ, GR, GS, GT, GU, GV, GW, GX, GY, GZ, HA, HB, HC, HD, HE, HF, HG, HH, HI, HJ, HK, HL, HM, HN, HO, HP, HQ, HR, HS, HT, HU, HV, HW, HX, HY, HZ, IA, IB, IC, ID, IE, IF, IG, IH, II, IJ, IK, IL, IM, IN, IO, IP, IQ, IR, IS, IT, IU, IV, IW, IX, IY, IZ, JA, JB, JC, JD, JE, JF, JG, JH, JI, JJ, JK, JL, JM, JN, JO, JP, JQ, JR, JS, JT, JU, JV, JW, JX, JY, JZ, KA, KB, KC, KD, KE, KF, KG, KH, KI, KJ, KK, KL, KM, KN, KO, KP, KQ, KR, KS, KT, KU, KV, KW, KX, KY, KZ, LA, LB, LC, LD, LE, LF, LG, LH, LI, LJ, LK, LL, LM, LN, LO, LP, LQ, LR, LS, LT, LU, LV, LW, LX, LY, LZ, MA, MB, MC, MD, ME, MF, MG, MH, MI, MJ, MK, ML, MM, MN, MO, MP, MQ, MR, MS, MT, MU, MV, MW, MX, MY, MZ, NA, NB, NC, ND, NE, NF, NG, NH, NI, NJ, NK, NL, NM, NN, NO, NP, NQ, NR, NS, NT, NU, NV, NW, NX, NY, NZ, OA, OB, OC, OD, OE, OF, OG, OH, OI, OJ, OK, OL, OM, ON, OO, OP, OQ, OR, OS, OT, OU, OV, OW, OX, OY, OZ, PA, PB, PC, PD, PE, PF, PG, PH, PI, PJ, PK, PL, PM, PN, PO, PP, PQ, PR, PS, PT, PU, PV, PW, PX, PY, PZ, QA, QB, QC, QD, QE, QF, QG, QH, QI, QJ, QK, QL, QM, QN, QO, QP, QQ, QR, QS, QT, QU, QV, QW, QX, QY, QZ, RA, RB, RC, RD, RE, RF, RG, RH, RI, RJ, RK, RL, RM, RN, RO, RP, RQ, RR, RS, RT, RU, RV, RW, RX, RY, RZ, SA, SB, SC, SD, SE, SF, SG, SH, SI, SJ, SK, SL, SM, SN, SO, SP, SQ, SR, SS, ST, SU, SV, SW, SX, SY, SZ, TA, TB, TC, TD, TE, TF, TG, TH, TI, TJ, TK, TL, TM, TN, TO, TP, TQ, TR, TS, TT, TU, TV, TW, TX, TY, TZ, UA, UB, UC, UD, UE, UF, UG, UH, UI, UJ, UK, UL, UM, UN, UO, UP, UQ, UR, US, UT, UY, UZ, VA, VB, VC, VD, VE, VF, VG, VH, VI, VJ, VK, VL, VM, VN, VO, VP, VQ, VR, VS, VT, VU, VV, VW, VX, VY, VZ, WA, WB, WC, WD, WE, WF, WG, WH, WI, WJ, WK, WL, WM, WN, WO, WP, WQ, WR, WS, WT, WU, WV, WW, WX, WY, WZ, XA, XB, XC, XD, XE, XF, XG, XH, XI, XJ, XK, XL, XM, XN, XO, XP, XQ, XR, XS, XT, XU, XV, XW, XX, XY, XZ, YA, YB, YC, YD, YE, YF, YG, YH, YI, YJ, YK, YL, YM, YN, YO, YP, YQ, YR, YS, YT, YU, YV, YW, YX, YY, YZ, ZA, ZB, ZC, ZD, ZE, ZF, ZG, ZH, ZI, ZJ, ZK, ZL, ZM, ZN, ZO, ZP, ZQ, ZR, ZS, ZT, ZU, ZV, ZW, ZX, ZY, ZZ

SIGNIFICANCE

MAJOR PRODUCTS MAJOR <PB, MAG, U, FLA, VZ, W, S, B, I, L, K, M, N, O, P, Q, R, S, T, U, V, W, X, Y, Z, AA, AB, AC, AD, AE, AF, AG, AH, AI, AJ, AK, AL, AM, AN, AO, AP, AQ, AR, AS, AT, AU, AV, AW, AX, AY, AZ, BA, BB, BC, BD, BE, BF, BG, BH, BI, BJ, BK, BL, BM, BN, BO, BP, BQ, BR, BS, BT, BU, BV, BW, BX, BY, BZ, CA, CB, CC, CD, CE, CF, CG, CH, CI, CJ, CK, CL, CM, CN, CO, CP, CQ, CR, CS, CT, CU, CV, CW, CX, CY, CZ, DA, DB, DC, DD, DE, DF, DG, DH, DI, DJ, DK, DL, DM, DN, DO, DP, DQ, DR, DS, DT, DU, DV, DW, DX, DY, DZ, EA, EB, EC, ED, EE, EF, EG, EH, EI, EJ, EK, EL, EM, EN, EO, EP, EQ, ER, ES, ET, EU, EV, EW, EX, EY, EZ, FA, FB, FC, FD, FE, FF, FG, FH, FI, FJ, FK, FL, FM, FN, FO, FP, FQ, FR, FS, FT, FU, FV, FW, FX, FY, FZ, GA, GB, GC, GD, GE, GF, GG, GH, GI, GJ, GK, GL, GM, GN, GO, GP, GQ, GR, GS, GT, GU, GV, GW, GX, GY, GZ, HA, HB, HC, HD, HE, HF, HG, HH, HI, HJ, HK, HL, HM, HN, HO, HP, HQ, HR, HS, HT, HU, HV, HW, HX, HY, HZ, IA, IB, IC, ID, IE, IF, IG, IH, II, IJ, IK, IL, IM, IN, IO, IP, IQ, IR, IS, IT, IU, IV, IW, IX, IY, IZ, JA, JB, JC, JD, JE, JF, JG, JH, JI, JJ, JK, JL, JM, JN, JO, JP, JQ, JR, JS, JT, JU, JV, JW, JX, JY, JZ, KA, KB, KC, KD, KE, KF, KG, KH, KI, KJ, KK, KL, KM, KN, KO, KP, KQ, KR, KS, KT, KU, KV, KW, KX, KY, KZ, LA, LB, LC, LD, LE, LF, LG, LH, LI, LJ, LK, LL, LM, LN, LO, LP, LQ, LR, LS, LT, LU, LV, LW, LX, LY, LZ, MA, MB, MC, MD, ME, MF, MG, MH, MI, MJ, MK, ML, MM, MN, MO, MP, MQ, MR, MS, MT, MU, MV, MW, MX, MY, MZ, NA, NB, NC, ND, NE, NF, NG, NH, NI, NJ, NK, NL, NM, NN, NO, NP, NQ, NR, NS, NT, NU, NV, NW, NX, NY, NZ, OA, OB, OC, OD, OE, OF, OG, OH, OI, OJ, OK, OL, OM, ON, OO, OP, OQ, OR, OS, OT, OU, OV, OW, OX, OY, OZ, PA, PB, PC, PD, PE, PF, PG, PH, PI, PJ, PK, PL, PM, PN, PO, PP, PQ, PR, PS, PT, PU, PV, PW, PX, PY, PZ, QA, QB, QC, QD, QE, QF, QG, QH, QI, QJ, QK, QL, QM, QN, QO, QP, QQ, QR, QS, QT, QU, QV, QW, QX, QY, QZ, RA, RB, RC, RD, RE, RF, RG, RH, RI, RJ, RK, RL, RM, RN, RO, RP, RQ, RR, RS, RT, RU, RV, RW, RX, RY, RZ, SA, SB, SC, SD, SE, SF, SG, SH, SI, SJ, SK, SL, SM, SN, SO, SP, SQ, SR, SS, ST, SU, SV, SW, SX, SY, SZ, TA, TB, TC, TD, TE, TF, TG, TH, TI, TJ, TK, TL, TM, TN, TO, TP, TQ, TR, TS, TT, TU, TV, TW, TX, TY, TZ, UA, UB, UC, UD, UE, UF, UG, UH, UI, UJ, UK, UL, UM, UN, UO, UP, UQ, UR, US, UT, UY, UZ, VA, VB, VC, VD, VE, VF, VG, VH, VI, VJ, VK, VL, VM, VN, VO, VP, VQ, VR, VS, VT, VU, VV, VW, VX, VY, VZ, WA, WB, WC, WD, WE, WF, WG, WH, WI, WJ, WK, WL, WM, WN, WO, WP, WQ, WR, WS, WT, WU, WV, WW, WX, WY, WZ, XA, XB, XC, XD, XE, XF, XG, XH, XI, XJ, XK, XL, XM, XN, XO, XP, XQ, XR, XS, XT, XU, XV, XW, XX, XY, XZ, YA, YB, YC, YD, YE, YF, YG, YH, YI, YJ, YK, YL, YM, YN, YO, YP, YQ, YR, YS, YT, YU, YV, YW, YX, YY, YZ, ZA, ZB, ZC, ZD, ZE, ZF, ZG, ZH, ZI, ZJ, ZK, ZL, ZM, ZN, ZO, ZP, ZQ, ZR, ZS, ZT, ZU, ZV, ZW, ZX, ZY, ZZ

\*PRODUCTION

PRODUCTION <YES (circle)> PRODUCTION SIZE <SMALL (circle one) MED LARGE (circle one)> NON-PRODUCER PRODUCTION <UND NO (circle one)>

\*STATUS

EXPLORATION OR DEVELOPMENT PRODUCER NON-PRODUCER STATUS AND ACTIVITY A20 <4> STATUS AND ACTIVITY A20 <>

DISCOVERER L20 <> YEAR OF DISCOVERY L10 <> NATURE OF DISCOVERY L30 <R> YEAR OF FIRST PRODUCTION L40 <1926> YEAR OF LAST PRODUCTION L45 <1958> PRESENT/LAST OWNER A12 <W.H. CLARKE (1966)> PRESENT/LAST OPERATOR A13 <W.V. RHEA (1958)> EXPL./DEV.COMMENTS L110 <OTHER PAST OPERATOR IS: W.H. CLARKE (1926 TO 1950). THE WHITE OAK AND BIG STEVE MINES ARE PART OF A GROUP OF 4 CLAIMS IN THE AREA.

DESCRIPTION OF DEPOSIT

DEPOSIT TYPE(S) C40 <VEIN/SHEAR ZONE> DEPOSIT FORM/SHAPE M10 <TABULAR, IRREGULAR> DEPTH TO TOP M20 <> UNITS M21 <> MAXIMUM LENGTH M40 <1500> UNITS M41 <FT> DEPTH TO BOTTOM M30 <> UNITS M31 <> MAXIMUM WIDTH M50 <30> UNITS M51 <FT> DEPOSIT SIZE M15 <SMALL (circle one) M15 <MEDIUM M15 <LARGE (circle one)> MAXIMUM THICKNESS M60 <> UNITS M61 <> STRIKE M70 <N55E> DIP M80 <70 SE TO VERTICAL> DIRECTION OF PLUNGE M100 <> PLUNGE M90 <> DEP.DISC.COMMENTS M110 <MINERALIZATION DISCONTINUOUS IN SHEAR ZONE>

DESCRIPTION OF WORKINGS

Workings are: SURFACE M120 UNDERGROUND M130 BOTH <M140 (circle one)> OVERALL LENGTH M190 <> UNITS M191 <> DEPTH BELOW SURFACE M160 <> UNITS M161 <> OVERALL WIDTH M200 <> UNITS M201 <> LENGTH OF WORKINGS M170 <> UNITS M171 <> OVERALL AREA M210 <> UNITS M211 <> DESC. OF WORK. COM. M220 <ADITS SURFACE CUTS, PITS, SHAFTS; WHITE OAK ADIT ALMOST CONTINUALLY STOPPED; ADIT BLOCKED 350 FT FROM PORTAL>

GEOLOGY

\*AGE OF HOST ROCK(S) K1 <C.R.E.T.> \*HOST ROCK TYPE(S) K1A <PORPHYRITIC QUARTZ LATITE> \*AGE OF IGNEOUS ROCK(S) K2 <C.R.E.T.> \*IGNEOUS ROCK TYPE(S) K2A <AS LINE K1A> \*AGE OF MINERALIZATION K3 <C.R.E.T.> \*PERT. MINERALS (NOT ORE) K4 <QUARTZ, AMETHYST, CALCITE, FLUORITE> \*ORE CONTROL/LOCUS K5 <STEEPLY DIPPING NE SHEAR ZONES> \*MAJ. REG. TRENDS/STRUCT. N5 <NW TRENDING FAULT ZONE> \*TECTONIC SETTING N15 <> \*SIGNIFICANT LOCAL STRUCT. N70 <> \*SIGNIFICANT ALTERATION N75 <MARCASITE TO GALENA TO ANGLESITE AND CERUSSITE; PYRITE GOSSAN;> \*PROCESS OF CONC./ENRICH. N80 <EPITHERMAL OPEN-SPACE FILLING; MINOR SUPERGENE ENRICHMENT> \*FORMATION AGE N30 <> \*FORMATION NAME N30A <> \*SECOND FM AGE N35 <> \*SECOND FM NAME N35A <> \*IGNEOUS UNIT AGE N50 <C.R.E.T.> \*IGNEOUS UNIT NAME N50A <PAJARITO LAVAS> \*SECOND IG. UNIT AGE N55 <> \*SECOND IG. UNIT NAME N55A <> \*GEOLOGY COMMENTS N85 <ORE IS FOUND WITHIN BOUNDING FAULT PLANES; NO TRACE OF THE HOST ROCK LEFT IN THE SHEAR ZONE EXCEPT FOR SOME QUARTZ PHENOCRYSTS; URANIUM IS FOUND>

GENERAL COMMENTS

GENERAL COMMENTS GEN <>

Production from the Big Steve & White Oak mine(s), Pajarito district,  
Santa Cruz Co., reported to the U.S. Bureau of Mines:

Production reported during years: 1926-28, 1930, 1933, 1935, 1944, 1950,  
and 1958

Cumulative Totals: 275 tons of ore treated, yielding:

200 pounds of copper  
68,578 pounds of lead  
1,083 ounces of silver  
2 ounces of gold

DEPARTMENT OF MINERAL RESOURCES  
STATE OF ARIZONA  
FIELD ENGINEERS REPORT

Mine WHITE OAK

Date May 13, 1966

District PAJARITO

Engineer G. W. Irvin

Subject: Mine report from examination by G. W. Irvin, November 1955 and revisit 5/12/66

REFERENCES - None.

LOCATION- In the north half of Section 2: R12E: T24S. Mine located on south side of Walker Canyon (First canyon east of Pena Blanca Canyon) on the Ruby road. Elevation approximately 4050'

CLAIMS - 4 Status not known.

OWNER - W. H. Clarke of Nogales (Ruby Road)

LEASES - Mr. Joseph Sirgo (Terms or length not known).

PRESENT ACTIVITY - None. *IDLE*

GEOLOGY- The ore occurs as a narrow vein in a Dacit Porphyry. It varies from a few inches to five feet in width. In places the vein appears to branch. Small cross fractures may be mineralized a little to each side of the main mineralization. The vein is nearly vertical. The main mineralization is lead oxides including pyromorphite, of which a few well formed crystals were found. In places underground and on the dump copper oxide minerals may be seen. A little radioactive mineralization does occur. (Very ~~little~~ little). The mine was examined using a scintillometer. The radio-active minerals are probably Uranophane and Kasolite.

ORE- The back of the stopes were not accessible, but could be seen with a good miners lamp. The winze was full of water.

Reserves- It is doubtful if there are any. However this examination was for radio-active mineralization, and the mine was not sampled for lead content. The dumps appear to be equal to the material removed from the workings. The appearance of the veins was just not very impressive.

So far as I know, very little has been shipped. At one time a small gravity mill was located at the foot of the dump.

Mine Workings: Were in very good shape in 1955, they should be in fair shape now. A cave-in is reported just back of the entrance, and in 1966 no attempt was made to enter the tunnel.

PAST HISTORY- It was reported to me that Mr. Clarke did the mining.

*Handwritten:* Santa Cruz Co.  
MILS # 64 B

**EXAMINATION OF THE WHITE OAK MINE  
SANTA CRUZ COUNTY ARIZONA  
BY  
G. W. IRVIN, MINING ENGINEER**

**NOVEMBER 18, 1955**

**RECEIVED**  
FEB 18 1986  
DEPT. OF MINES &  
MINERAL RESOURCES



### CONCLUSION

The possibilities of finding metalliferous or radioactive ore bodies of sufficient size and grade is rather remote. I feel that further consideration of this property is not indicated.

### DESCRIPTION

The WHITE OAK mine is located within section 2; R12E; T24S; in the PAJARITO mountains, SANTA CRUZ COUNTY, ARIZONA. It is about 8 miles westerly from NOGALES.

The property consists of 4 unpatented claims, and approximately 600 feet of underground workings. This work is shown on the attached map. It appears that less than 5000 tons of rock have been removed from the stopes. The topography is precipitous, and most of the work has been done from an adit in the south side of WALKER canyon. The elevation of the adit is approximately 4050 feet.

The owner of the property is W. H. CLARKE of NOGALES.

### GEOLOGY

The mine workings have followed a narrow fissure in the DACITE PORPHYRY. This vein varies in width from one half to five feet. In places it appears to branch, and in others cross faults have been mineralized to some extent. The vein is nearly vertical. The main mineralization appears to have been lead oxides, including PYROMORPHITE. A few well formed crystals of this mineral were noticed. A little copper oxide stain is evident in places.

The radioactive minerals appear to be concentrated in one small area or pocket. It is probable that other small pockets may be found. This area is small, and appears to be confined to points of more intense deformation and brecciation. The radioactive minerals are probably URANOPHANE & KASOLITE.

#### PURPOSE OF THIS REPORT

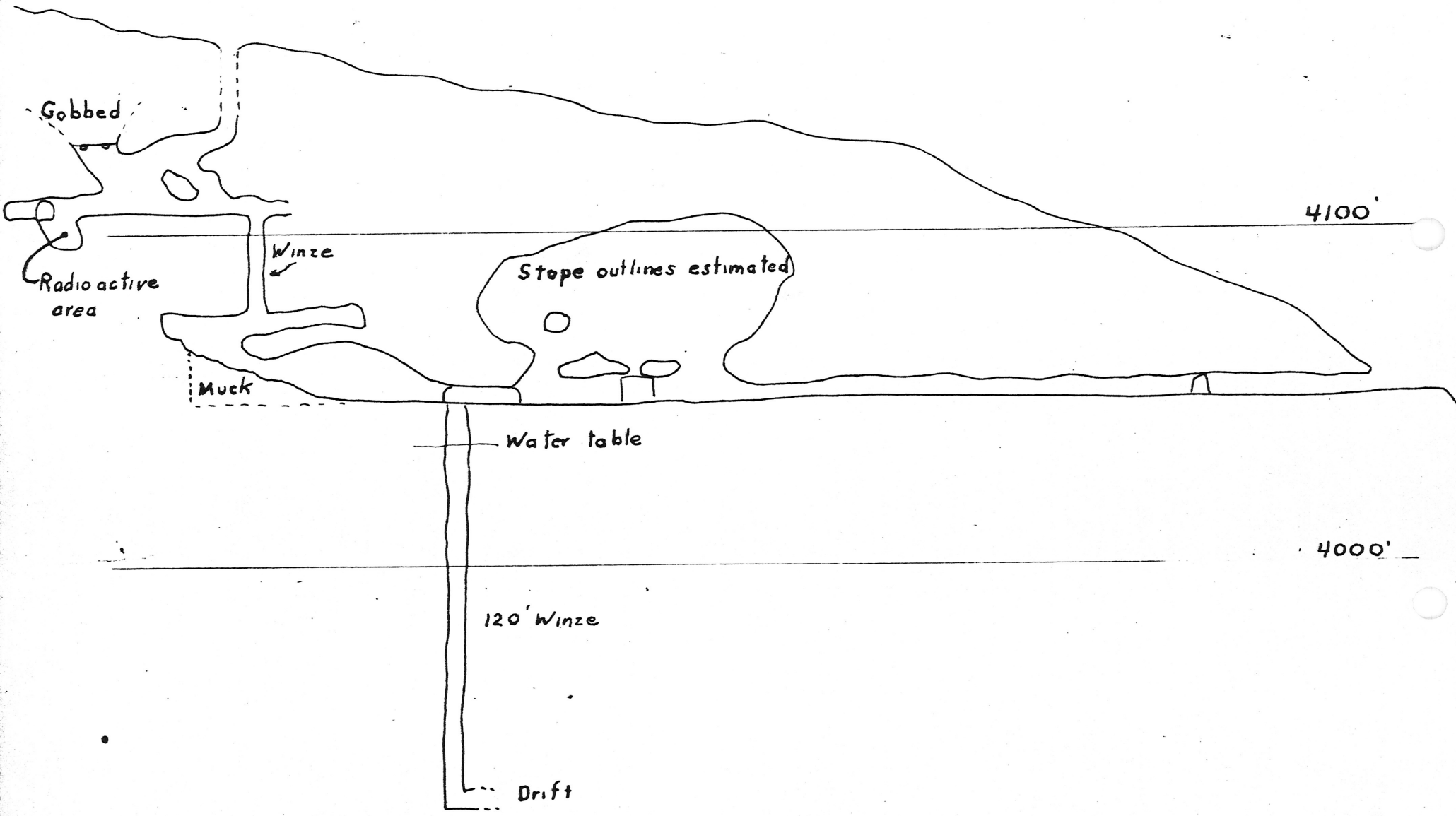
This report is the results of a 2 day investigation of the property. November 13, and 15. 1955.

It was made for the WARREN PETROLEUM COMPANY to determine if the possibilities of finding more ore existed.

*G. W. Irvin*  
G. W. IRVIN  
MINING ENGINEER



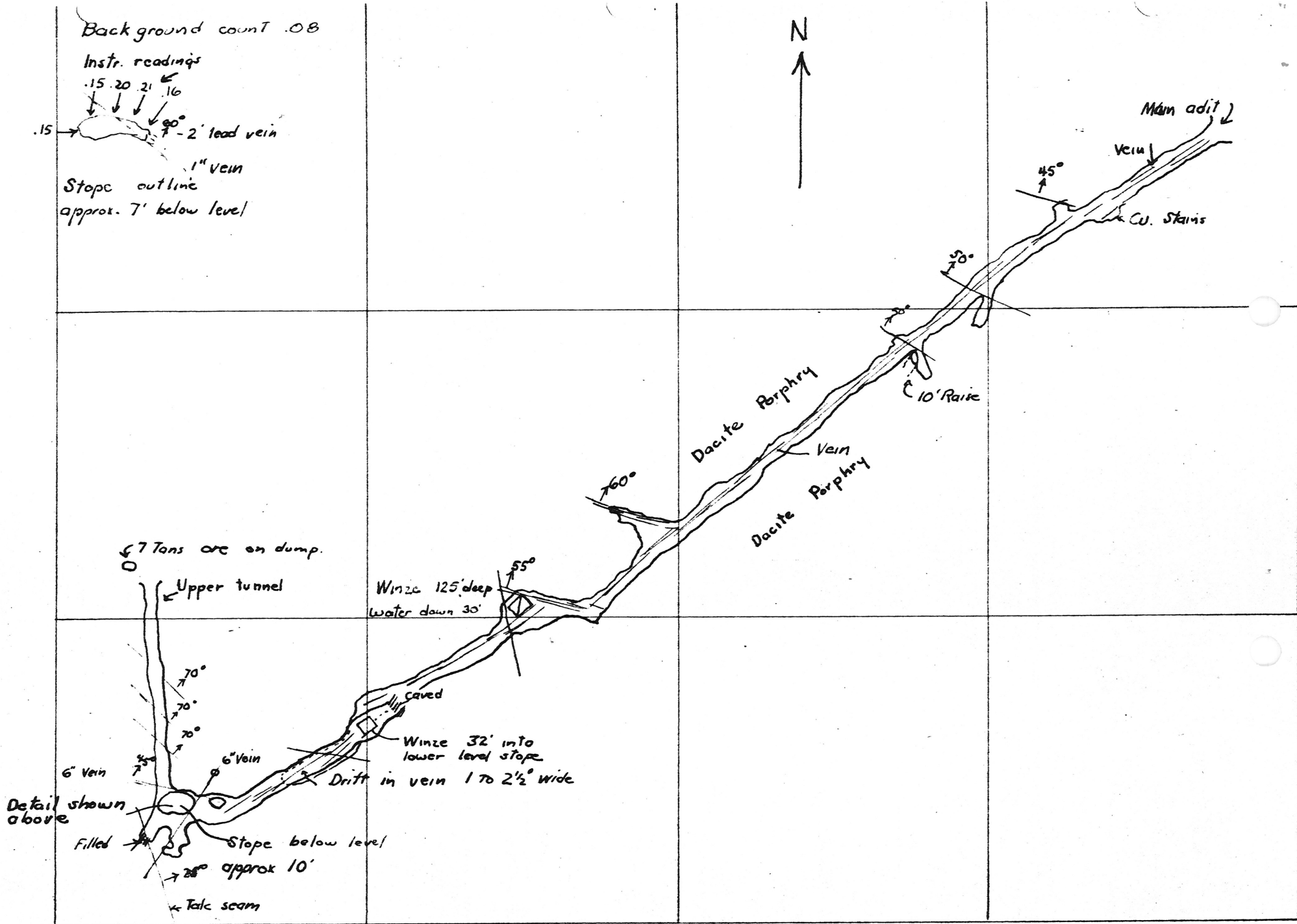




SECTION

ALONG VEIN

By G.W. Irwin



BRUNTON SURVEY, WHITE OAKS MINE  
 SCALE 1"=40'  
 NOV. 55

By G.W. Irvin

# LENON ENGINEERING OFFICES

ROBERT LENON, P.E.  
CONSULTING MINING ENGINEER

MAPS  
REPORTS

SURVEYS  
MINING

P. O. Box 525  
PATAGONIA, ARIZONA

Patagonia, December 6th, 1955

P. O. Box 257  
NOGALES, ARIZONA

Dear Gerry:

We got your note; had had the map and a note laid out to mail a few days after you were here; don't recall for sure that it was mailed, however, so will chase you another print.

The note said that we also have a lot of the breaks shown with dips-strikes on an office copy that we can fix up for you if you want them (underground geology, as far as breaks, &c, are concerned, not finished, but shows most of the dope in the tunnels and the outside shaft that has the water in it.

Thought we'd see you at the AIME meeting in Tucson, and had an eye out for you, but no business. Pretty good meeting, we thought....always get to see a lot of our pals.

Sorry about the delay on this if it was our fault. If the other map shows up it will be on the house.

Regards, and stop by,



Roberto, el diablo

**Statement for Professional Services.**

To-Warren Petroleum Co.  
Suite 338-339  
Continental Oil Building  
Denver 2, Colorado

2 Days Consulting @ \$100	\$200.00
Map of Mine	5.00
U.S. Topographic Map	.25
Black & White prints	.40
Postage	.15
Total	<u>\$205.80</u>

G. W. Irvin  
Mining Engineer  
Box 512, Nogales Highway  
Sahuarita, Arizona

*Not Dec 10  
Warren Petroleum Co  
P.O. Drawer 1310  
Oil Center Station  
Lafayette Louisiana*

Box 512, Nogales Highway  
Sahuarita, Arizona  
November 18, 1955

Mr. Paul Mounce,  
Warren Petroleum Co.  
Suite 338-339  
Continental Oil Building  
Denver 2, Colorado

Dear Mr. Mounce:

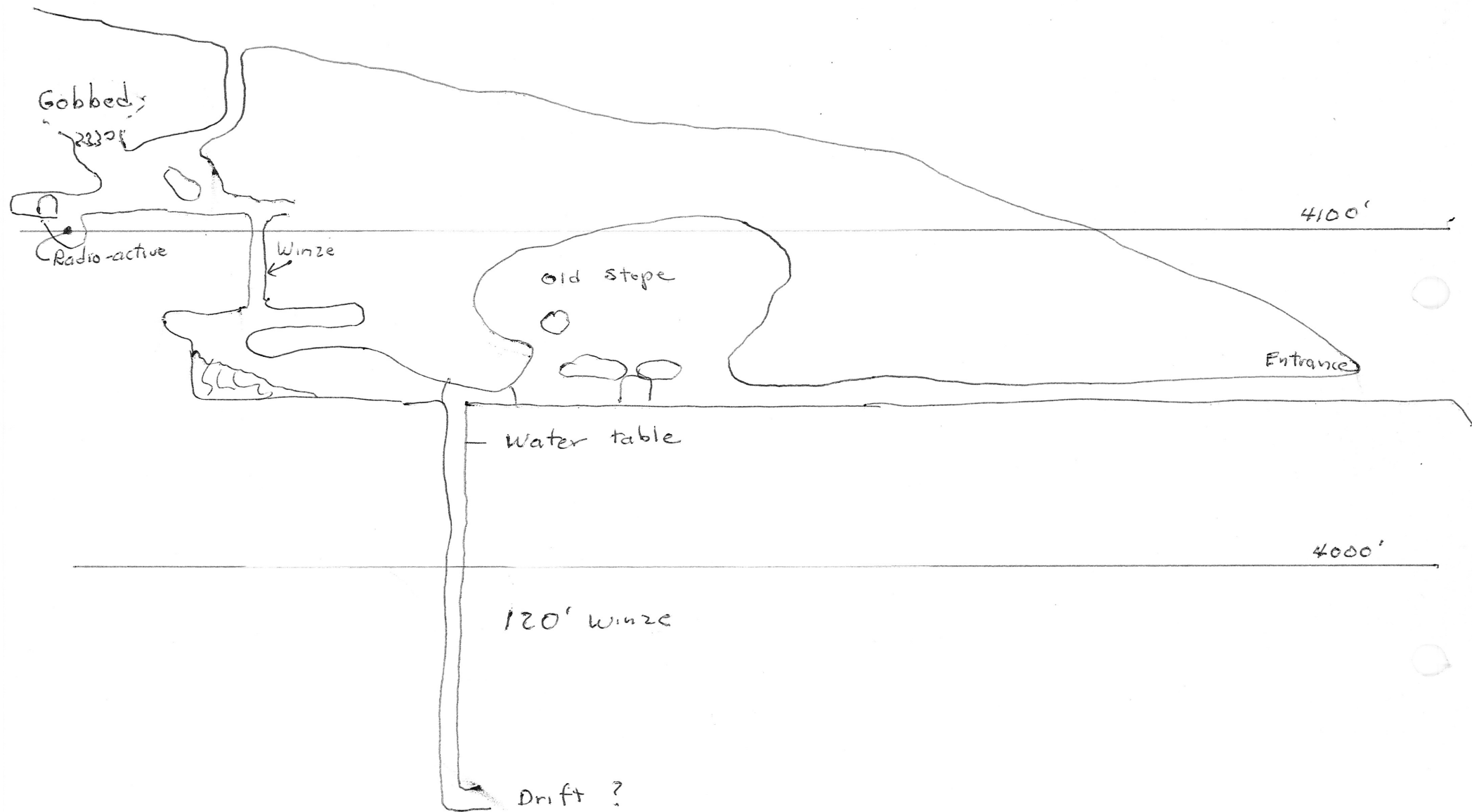
I am enclosing the report on the White Oaks mine, along with statement.

The map that I ordered from Mr. Lenon has not arrived, but will mail it to you later.

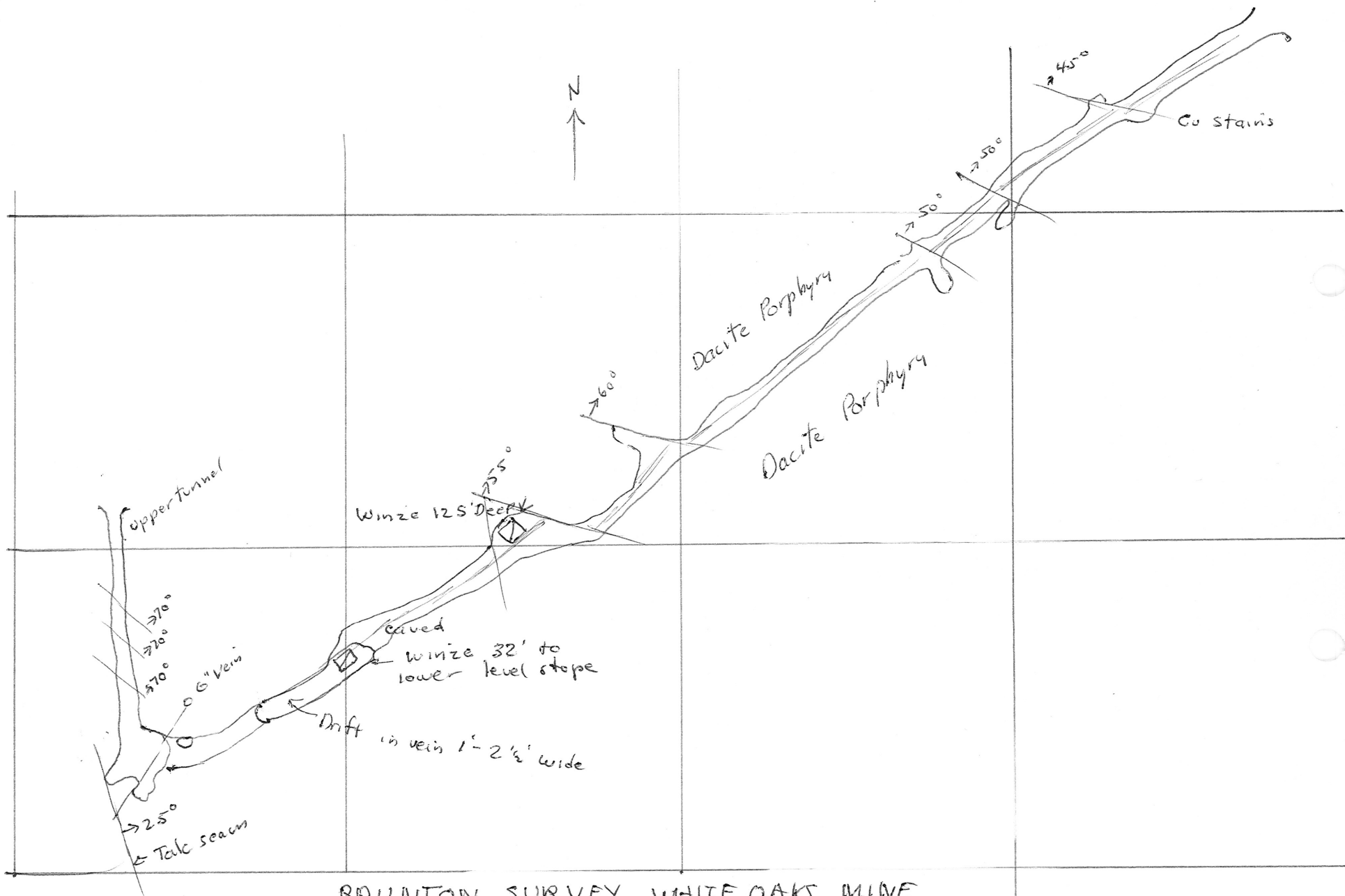
I enjoyed doing this work for you, and would be glad to serve your organization again.

Sincerely yours,

G. W. Irvin



SECTION LOOKING WEST  
 ALONG WHITE OAK VEIN  
 G.F  
 1955



BRUNTON SURVEY WHITE OAKS MINE  
 SCALE 1" = 40'

NOV 55

G.I

DEPARTMENT OF MINERAL RESOURCES  
STATE OF ARIZONA  
FIELD ENGINEERS REPORT

Mine                    White Oak Mine                    Date                    June 2, 1955  
District                Pajarito Dist., Santa Cruz Co.    Engineer                Axel L. Johnson  
Subject:                Present Status

Location. Go 7 miles north of Nogales on highway 89. Turn west on Ruby Road, and go 7 miles; turn south at 61 Ranch house and go 3 miles on dirt road to the mine.

Owner. P. J. Clarke and W. H. Clarke, Nogales, Ariz.

Lessees. Utah & Arizona Uranium Corp., 421 Fremont, Las Vegas, Nev.

Officers. Ray Worley, supt.

Principal Minerals. Uranium ores in the form of Kasolite and Uranophane in Pyromorphite.

No. of Men Employed--4

Production Rate. No production.

Geology. See my report on this property of Feb. 1, 1952.

Ore Values. See report on this property of        "        "

Old Workings.        "        "        "        "

Present Operations. Company has been milling the old dump on the property, using the old mill on the property.

Proposed Plans. Lessees and operators plan to discontinue operations in the very near future, as evidently the results have not been satisfactory.



DEPARTMENT OF MINERAL RESOURCES  
STATE OF ARIZONA  
FIELD ENGINEERS REPORT

Mine White Oak

Date Feb. 1, 1952.

District Pajarito Mining Dist., Santa Cruz Co.

Engineer Axel L. Johnson

Subject: Reconnaissance Report

Location Go 7 miles north of Nogales on Highway 89. Turn west on Ruby Road and go 7 miles on same. Turn south at 61 Ranch House, and go 3 miles on dirt road to mine.

Owners P. J. Clarke and W. H. Clarke, Nogales, Ariz.

Leaser Fred R. Brown, Box 26, Picacho, Ariz.

Metals Present Uranium and Lead.

Men Employed None. Mine idle.

Production Rate None.

Milling Facilities None. Has an old, run down, out of order, out of date mill, which was used to concentrate lead carbonate ore from the mine a number of years ago.

Geology Two lead carbonate veins in granite had been mined a number of years ago. The veins are about 3 ft. wide, but apparently quite low in lead content, as is evident by the material left in place. An attempt had been made to upgrade the ore by milling it prior to shipping the ore to the market. A small area about 5 ft. wide, 15 ft. long, and about 10 to 15 ft. deep shows considerable radioactivity, as determined by the Geiger counter. Fred R. Brown has sent samples in to the U. S. Atomic Energy's plant at Marysvale, Utah, who reported the ore to be in the form of kasolite and Uranophane.

Ore Values Mr. Fred R. Brown had sent a number of samples in to Marysvale, Utah for testing the Uranium content. Mr. Brown, however, admits the samples were hand picked, and not representative of the whole area. These samples ran from 1 to 6 per cent of  $U_3O_8$  content.

I took a representative sample ~~fr~~ of the whole radioactive area. After the sample was taken and brought out in the open ~~w~~ away from the radioactive area, it showed very little effect on the Geiger counter. I took it to the U. S. Bureau of mines for testing on their large Geiger Counter, and the man there in charge of the testing estimated that the sample would run about 0.1 % of  $U_3O_8$  content. He offered to grind the sample up and make a more accurate test, and report to me the results of same.

Old Workings (1) On first vein, there is a tunnel 500 ft. long with a deep winze at end of same. There is a large amount of ore stoped out above this tunnel.

(2) On second vein, there is a tunnel 125 ft. long with a 15 ft. winze about 50 ft. from the opening of the tunnel, and a deep winze at the end of the tunnel. There has been considerable stoping above this tunnel also. The radioactive area was found about 50 ft. from the opening of the tunnel---in, above and near the 15 ft. ~~winze~~ winze.

Proposed Plans Mr. Fred R. Brown would like to sell his lease, or sub-lease the property.

CLARKE, P. J. & W. H. - Owners  
Nogales, Ariz.

2-1-52

WHITE OAK MINE - Pajarito Mining Dist., Santa Cruz Co.

Leaser - Fred R. Brown, Box 26, Picacho, Ariz.

UTAH & ARIZONA URANIUM CORP. (LESSEES)

421 Fremont,  
Las Vegas, Nev.

MINE: WHITE OAK, Pajarito Mining Dist., Santa Cruz Co., N of Nogales,  
OWNERS: P. J. and W. H. Clarke, Nogales, Ariz. 5-2-55