



CONTACT INFORMATION

Mining Records Curator
Arizona Geological Survey
1520 West Adams St.
Phoenix, AZ 85007
602-771-1601
<http://www.azgs.az.gov>
inquiries@azgs.az.gov

The following file is part of the

Arizona Department of Mines and Mineral Resources Mining Collection

ACCESS STATEMENT

These digitized collections are accessible for purposes of education and research. We have indicated what we know about copyright and rights of privacy, publicity, or trademark. Due to the nature of archival collections, we are not always able to identify this information. We are eager to hear from any rights owners, so that we may obtain accurate information. Upon request, we will remove material from public view while we address a rights issue.

CONSTRAINTS STATEMENT

The Arizona Geological Survey does not claim to control all rights for all materials in its collection. These rights include, but are not limited to: copyright, privacy rights, and cultural protection rights. The User hereby assumes all responsibility for obtaining any rights to use the material in excess of "fair use."

The Survey makes no intellectual property claims to the products created by individual authors in the manuscript collections, except when the author deeded those rights to the Survey or when those authors were employed by the State of Arizona and created intellectual products as a function of their official duties. The Survey does maintain property rights to the physical and digital representations of the works.

QUALITY STATEMENT

The Arizona Geological Survey is not responsible for the accuracy of the records, information, or opinions that may be contained in the files. The Survey collects, catalogs, and archives data on mineral properties regardless of its views of the veracity or accuracy of those data.

ARIZONA DEPARTMENT OF MINES AND MINERAL RESOURCES AZMILS DATA

PRIMARY NAME: WHITE HILLS

ALTERNATE NAMES:

G.A.R.
GARFIELD
CHIEF OF THE HILLS
BONANZA
BLIND GODDESS
OLD ABE
GRAND CENTRAL
GRANT
HULDA
GRAND ARMY OF THE REPUBLIC
GOOD LUCK

MOHAVE COUNTY MILS NUMBER: 139

LOCATION: TOWNSHIP 27 N RANGE 20 W SECTION 11 QUARTER SE
LATITUDE: N 35DEG 44MIN 14SEC LONGITUDE: W 114DEG 22MIN 56SEC
TOPO MAP NAME: WHITE HILLS - 15 MIN

CURRENT STATUS: PAST PRODUCER

COMMODITY:

SILVER
GOLD LODE

BIBLIOGRAPHY:

ADMMR MOHAVE CUSTOM MILL PROJECT
ADMMR WHITE HILLS FILE
SCHRADER, F.C. "MIN. DPSTS OF CRBT RNGE, BLCK
MTNS, GRND WSH CLFS, AZ" USGS BULL 397,P 133
USGS BULL. 397, P. 134



Name of Mine or Prospect	Township	Range	Section	Priority
Grand Army of the Republic Mine (G.A.R.)	27N	20W	11 sec	A
Principal Minerals:	1:250,000 Quad	7.5' - 15' Quad		
Gold, Silver	Kingman	White Hills		
Associated Minerals:	District	Principal Product		
	White Hills	Gold and Silver		
Type of Operation:	County	State	Type of Deposit	
Underground: Shafts, Drifts, Stopes	Mohave	Arizona	Vein	

Ownership or Controlling Interest:
Consult current tax assessment records.

Access: From Kingman, Arizona., proceed north on U.S. 93 for 42 miles. Turn right on light duty road for 3.5 miles, take right fork and proceed 2 miles into White Hills District. Mine is located on topographic quadrangle.

Structural Control or Geological Association:

"The country rock is a gneissic granite and schist. It is highly altered and non-stained. The deposits are contained in two parallel veins about 30 feet apart, striking N62°W, dipping 23°NE."¹

Age of Mineralization:

Production History	Geochemical Analyses
Extensive underground workings.	"\$6,000 to \$7,000 /ton silver" ¹
Patented claim Bk #317 MS #1256B	
"Arizona Silver Corp. ... is busy developing its G.A.R. mine ... and production is expected in the near future. ... The ore currently being processed is from dumps... and ore previously stockpiled from the G.A.R. mine. The dumps average approximately 4 oz/ton silver and 0.02 oz/ton gold." "125 tons per day are being processed from the G.A.R. and the adjacent Hulda Mine, owned by Continental Silver Corp." ³	

References

- 1) Schrader (1909) p. 130-131.
- 2) CETA map file Rack #26, underground map.
- 3) The Northern Miner (22 July 1982).

Name of Mine or Prospect	Township	Range	Section	Priority						
Hulda Mine	27N	20W	11 acc	B						
Principal Minerals: Silver, Gold	1:250,000 Quad Kingman	7.5' - 15' Quad White Hills								
Associated Minerals: Quartz, Calcite	District White Hills	Principal Product Silver, Gold								
Type of Operation: Underground	County Mohave	State Ar.	Type of Deposit Vein							
Ownership or Controlling Interest: Consult current tax assessment records										
Access: From Kingman, Ar., proceed north on U.S. 93 for 42 miles. Turn right on light duty road for 3.5 miles. Take right fork for 2.0 miles to White Hills District. Shaft is located on topographic quadrangle.										
Structural Control or Geological Association: "Older Precambrian Age, Granite Gneiss." ¹										
Age of Mineralization:										
Production History		Geochemical Analyses								
Patented claim Bk #317 Ms #1254		<table><tr><td>Gold</td><td>oz/ton</td><td>Silver</td></tr><tr><td>0.05</td><td></td><td>10 - 14</td></tr></table>			Gold	oz/ton	Silver	0.05		10 - 14
Gold	oz/ton	Silver								
0.05		10 - 14								
"After several years of exploration and development, Continental Silver Corp. has brought into production its 'Hilda' (sic) mine ... Production commenced last May. ... Processing of ore from their White Hills properties (in conjunction with the G.A.R. mine owned by Arizona Silver Corp.) will be maintained at a rate of approximately 125 tons per day averaging 8 oz of silver and 0.03 oz of gold per ton." ³ "The Hilda (sic) mine ... is averaging 10-14 oz silver and 0.05 oz gold per ton." ³										
References										
1) Wilson & Moore (1959) Geologic map. 2) Schrader (1909) p. 127-130. 3) The Northern Miner (22 July 1982).										

Name of Mine or Prospect:	Garfield Mine	Township	27N	Range	20W	Section	13 bba	Priority	B
Principal Minerals:	Gold, Silver	1:250,000 Quad	Kingman	7.5' - 15' Quad	White Hills				
Associated Minerals:		District	White Hills	Principal Product	Gold and Silver				
Type of Operation:	Underground: Shaft	County	Mohave	State	Ar.	Type of Deposit	Vein		
Ownership or Controlling Interest:									
Consult current tax assessment records									
Access: From Kingman, Ar. proceed north on U.S. 93 for 42 miles. Turn right on light duty road for 3.5 miles. Take right fork and proceed 2 miles into White Hills District Mine is located (unnamed) on topographic quadrangle.									
Structural Control or Geological Association:									
"Older Precambrian Age, Granite Gneiss." ²									
Age of Mineralization:									
Production History					Geochemical Analyses				
Production is reported at \$60,000.00 (1909)									
Patented claim Bk #317 MS #1256A 1256B									
References									
1) Schrader (1909) p. 133.									
2) Wilson & Moore (1959) Geologic map.									

Name of Mine or Prospect:	Township	Range	Section	Priority
Blind Goddess	27N	20W	11 dcc	B
Principal Minerals:	1:250,000 Quad		7.5' - 15' Quad	
Gold, Silver	Kingman		White Hills	
Associated Minerals:	District		Principal Product	
Quartz, Calcite	White Hills		Gold, Silver	
Type of Operation:	County	State	Type of Deposit	
	Mohave	Ar.	Vein	
Ownership or Controlling Interest: Consult current tax assessment records.				
Access: From Kingman, Ar. proceed north on U.S. 93 for 42 miles; turn right on light duty road for 3.5 miles; at the fork bear right and proceed 2 miles into White Hills district. Mine is located on topographic quadrangle.				
Structural Control or Geological Association: "Older Precambrian Age, Granite Gneiss." ¹				
Age of Mineralization:				
Production History		Geochemical Analyses		
Patented claim BK#317 MS#1256				
References				
1) Wilson & Moore (1959), Geologic map.				

Name of Mine or Prospect	Township	Range	Section	Priority
Bonanza Mine	11N	14W	24ada	C
Principal Minerals:	1:250,000 Quad Prescott		7.5' - 15' Quad Artillery Peak	
Associated Minerals:	District Artillery Mtn.		Principal Product	
Type of Operation:	County	State	Type of Deposit	
Underground: Shaft and tunnels	Mohave	AZ		
Ownership or Controlling Interest: Consult current USBLM mining claim records.				
Access: Vehicle access is difficult due to poor road conditions; Consult topographic map for existing jeep trails.				
Structural Control or Geological Association: "Older Precambrian Age, Schist." ¹ "Mineralization at the Bonanza mine and surrounding prospects is associated with the Rawhide Mountains detachment fault." ²				
Age of Mineralization:				
Production History		Geochemical Analyses		
References				
1) Wilson & Moore (1959) Geologic map. 2) Shackelford (1976) Geologic map.				

The FOUR CORNERS ADVISOR

Box 5

Silverton, Colorado 81433

303 387 5681

Volume 8

Number 7

Copyright © 1983 by Arthur L. Francisco

September, 1983

QUERIES - Answers to Readers

The Northern Miner July 22TH 1982

Hit
til
fil

DEPARTMENT OF MINERAL RESOURCES

STATE OF ARIZONA FIELD ENGINEERS REPORT

Mine White Hills (Silver, gold)

Date May 29, 1962

District Indian Secret Dist., Mohave Co.

Engineer Travis P. Lane

Subject: Visit of May 16, 1962.

Property & Ownership: Charles Steen (of Utex Exploration Company) and associates has acquired all the patented lode claims in the district. The recent owners of a large group of the original White Hill Mining Co. properties have either sold outright to Steen or have traded for a participating interest in his venture. In addition to the patented ground (some 90 claims) the Steen project includes 160 recently staked lode claims. The new ground is mostly on the west border of the former productive area.

Chas. Steen's office address: 1790 E. Plumb Lane, Reno, Nevada. The resident Supt. is Glen Walker, Loma Vista Motel, Kingman.

Location, History, Description: The White hills district is located on the western edge of the White Hills which are a north extension of the Cerbat Mountains. The district is some 4 miles by 3 miles in areal extent and is in an area of granitic rocks. It is centered some 28 miles north of Chloride and is about 5 miles east from Hwy. 93. The original discoveries were made in 1892 and shipments of very high grade silver ore began shortly thereafter. Peak production was reached in 1894 and population of the camp at that time was 1200. About 1895 the important producing properties ^{were} sold to an English concern, the White Hills Mining and Milling Company, for \$1,500,000. The company built a 40-stamp mill and established an elaborate water system and camp. After several years operation the company failed and the mine was bought in at sheriff's sale by the original owners. These people built a 10-stamp mill in 1904 and successfully treated a large quantity of the accumulated dump ore. The mine has been idle for many years except for occasional short-lived exploration projects and scattered leaser production.

Total production of the district is variously estimated at from \$2,000,000 to \$3,000,000. Arizona Bureau of Mines Bulletin No. 140 lists value of production (to 1906) at \$1,900,000 silver and \$100,000 gold. No substantial production has been made since 1906. The district is described in considerable detail in U.S.G.S. Bulletin No. 397 "Mineral Deposits of the Cerbat Range, Black Mountains and Grand Wash Cliffs" (1909).

The ore deposits were principally quartz veins of the "blanket" or low dip type. The numerous productive veins were more or less parallel and were narrow (av. 3') with rich values in silver chloride accompanied by a significant amount of gold. Both manganese and iron oxide are abundant in the ore. The mineralization is oxidized to the bottom of the mines (maximum incline depths apparently less than 1000') and productive depth somewhat less.

At the time of visit a dozer was at work stripping and trenching in a low hill area west of the former producing area. A diamond drilling program will be conducted here to explore for extension of the formerly productive vein system and possible new deposits.

Scenes In Old Arizona

PAY DIRT for August 26, 1974

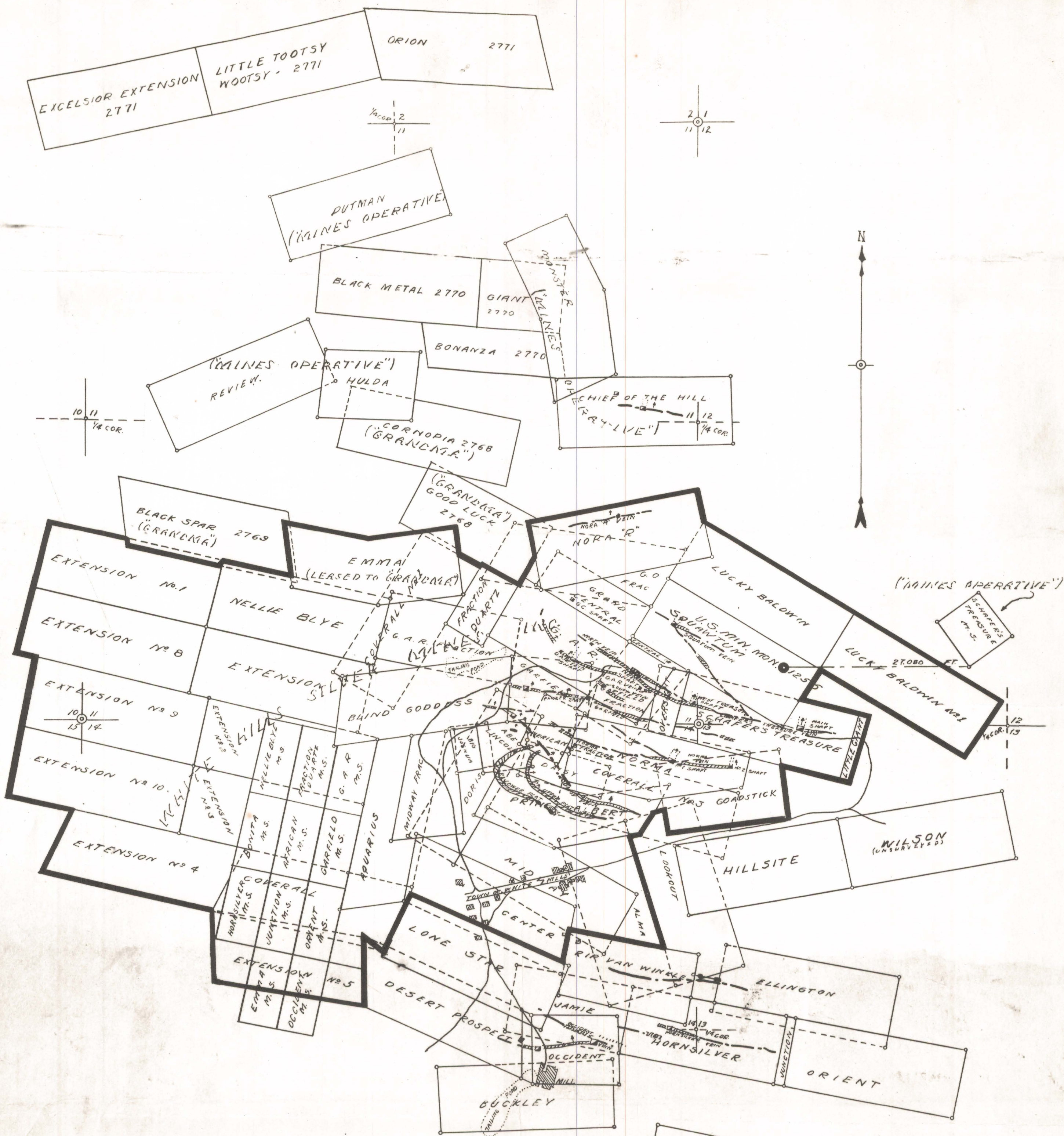
PAY DIRT 1/29/68

Ext mg 6/19/68

d. PAY DIRT 11/68

about 90%. Ext mg. 9/1/69

PAY DIRT 10/1/69

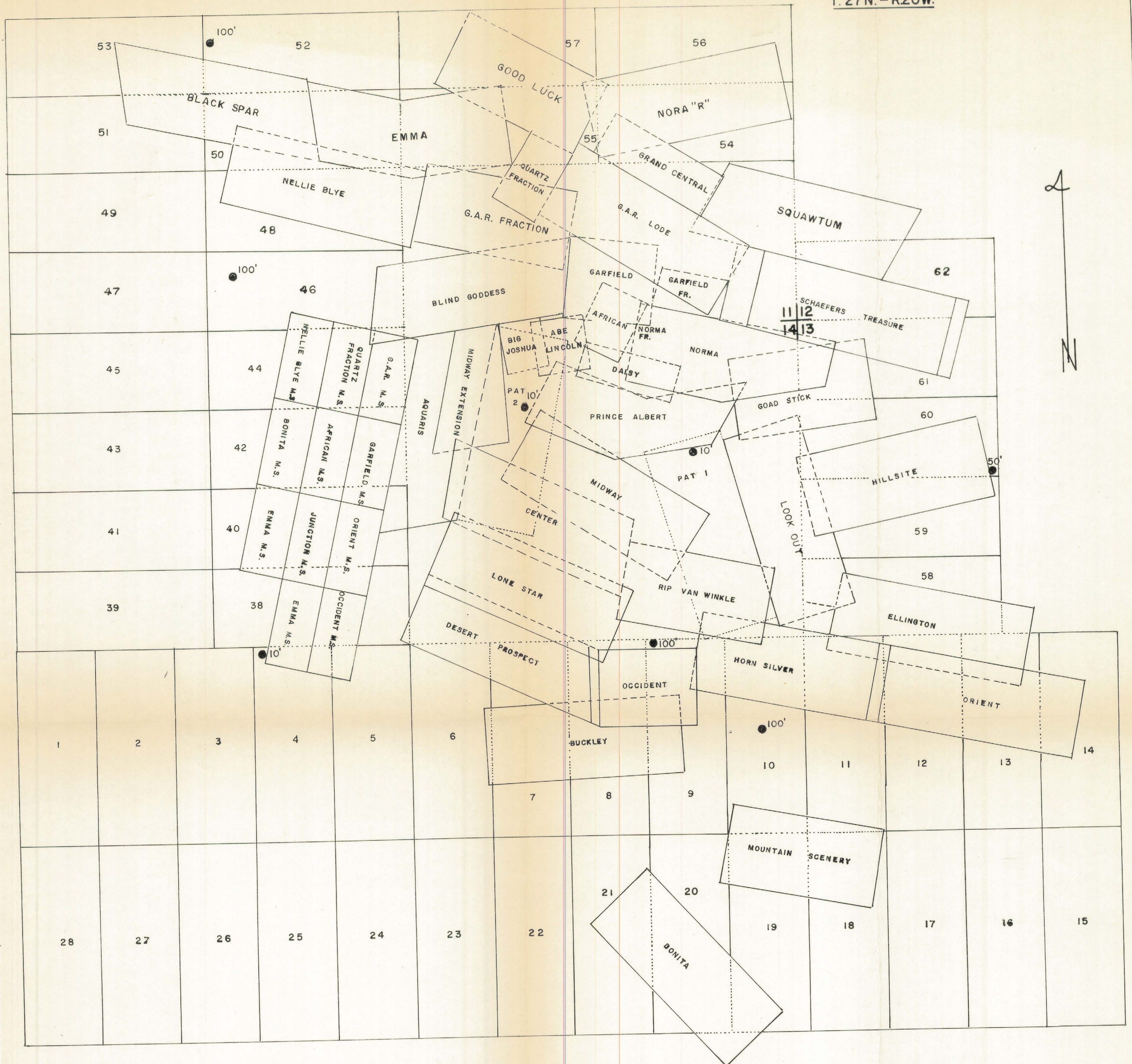


PROPERTY MAP OF
WHITE HILLS SILVER MINES INC.
 INDIAN SECRET MINING DIST.,
 MOJAVE CO., ARIZONA.

SCALE 1 IN. = 600 FT.

TAKEN FROM MAP OF K. H. DAVIS.
 BY E. S. GILES, GOLDFIELD, NEV.,
 APRIL, 1929.

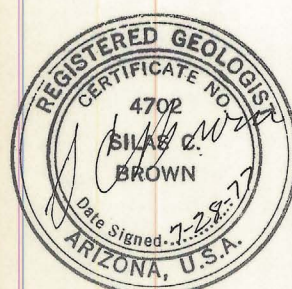
T. 27N. - R. 20W.



● 100' VALIDATION OR TEST HOLE SHOWING DEPTH DRILLED

CENTER PATENTED CLAIMS

37 UNPATENTED WHITE HILL CLAIMS



ARIZONA SILVER CORPORATION

VALIDATION & TEST HOLE LOCATIONS
OF THE
WHITE HILLS SILVER PROPERTY

MOHAVE COUNTY, ARIZONA
U.S.A.

300' 0' 300' 600' 900' 1200'

CHARLES R. WARD CORPORATION
SILAS C. BROWN, GEOLOGIST

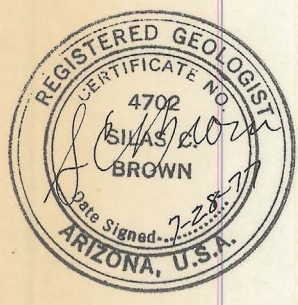
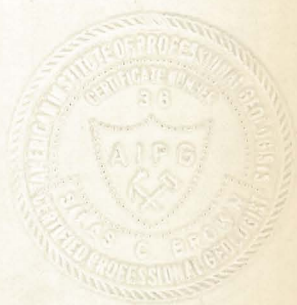
PHOENIX, ARIZONA
JULY, 1977

T. 27N. - R. 20W.



● 100' VALIDATION OR TEST HOLE SHOWING DEPTH DRILLED

CENTER PATENTED CLAIMS
37 UNPATENTED WHITE HILL CLAIMS



ARIZONA SILVER CORPORATION

**VALIDATION & TEST HOLE LOCATIONS
OF THE
WHITE HILLS SILVER PROPERTY**

MOHAVE COUNTY, ARIZONA
U.S.A.

300' 0' 300' 600' 900' 1200'

CHARLES R. WARD CORPORATION PHOENIX, ARIZONA
SILAS C. BROWN, GEOLOGIST JULY, 1977