



CONTACT INFORMATION

Mining Records Curator
Arizona Geological Survey
1520 West Adams St.
Phoenix, AZ 85007
602-771-1601
<http://www.azgs.az.gov>
inquiries@azgs.az.gov

The following file is part of the

Arizona Department of Mines and Mineral Resources Mining Collection

ACCESS STATEMENT

These digitized collections are accessible for purposes of education and research. We have indicated what we know about copyright and rights of privacy, publicity, or trademark. Due to the nature of archival collections, we are not always able to identify this information. We are eager to hear from any rights owners, so that we may obtain accurate information. Upon request, we will remove material from public view while we address a rights issue.

CONSTRAINTS STATEMENT

The Arizona Geological Survey does not claim to control all rights for all materials in its collection. These rights include, but are not limited to: copyright, privacy rights, and cultural protection rights. The User hereby assumes all responsibility for obtaining any rights to use the material in excess of "fair use."

The Survey makes no intellectual property claims to the products created by individual authors in the manuscript collections, except when the author deeded those rights to the Survey or when those authors were employed by the State of Arizona and created intellectual products as a function of their official duties. The Survey does maintain property rights to the physical and digital representations of the works.

QUALITY STATEMENT

The Arizona Geological Survey is not responsible for the accuracy of the records, information, or opinions that may be contained in the files. The Survey collects, catalogs, and archives data on mineral properties regardless of its views of the veracity or accuracy of those data.

PRINTED: 09/06/2002

ARIZONA DEPARTMENT OF MINES AND MINERAL RESOURCES AZMILS DATA

PRIMARY NAME: WHITE HEAD

ALTERNATE NAMES:

YAVAPAI COUNTY MILS NUMBER: 1111B

LOCATION: TOWNSHIP 12 N RANGE 1 W SECTION 28 QUARTER SE
LATITUDE: N 34DEG 21MIN 00SEC LONGITUDE: W 112DEG 21MIN 41SEC
TOPO MAP NAME: BATTLE FLAT - 7.5 MIN

CURRENT STATUS: EXP PROSPECT

COMMODITY:
GOLD
SILVER

BIBLIOGRAPHY:
USGS BATTLE FLAT QUAD
ADMMR WHITE HEAD FILE

12/07/90

ARIZONA DEPARTMENT OF MINES AND MINERAL RESOURCES FILE DATA

PRIMARY NAME: WHITE HEAD

ALTERNATE NAMES:

YAVAPAI COUNTY MILS NUMBER: 1111B

LOCATION: TOWNSHIP 12 N RANGE 1 W SECTION 28 QUARTER SE
LATITUDE: N 34DEG 21MIN 00SEC LONGITUDE: W 112DEG 21MIN 41SEC
TOPO MAP NAME: BATTLE FLAT - 7.5 MIN

CURRENT STATUS: EXP PROSPECT

COMMODITY:

SILVER

BIBLIOGRAPHY:

USGS BATTLE FLAT QUAD
ADMMR WHITE HEAD FILE

112°22'30"
34°22'30"

374000m.E.

375

376

377

20'

3804000m.N.

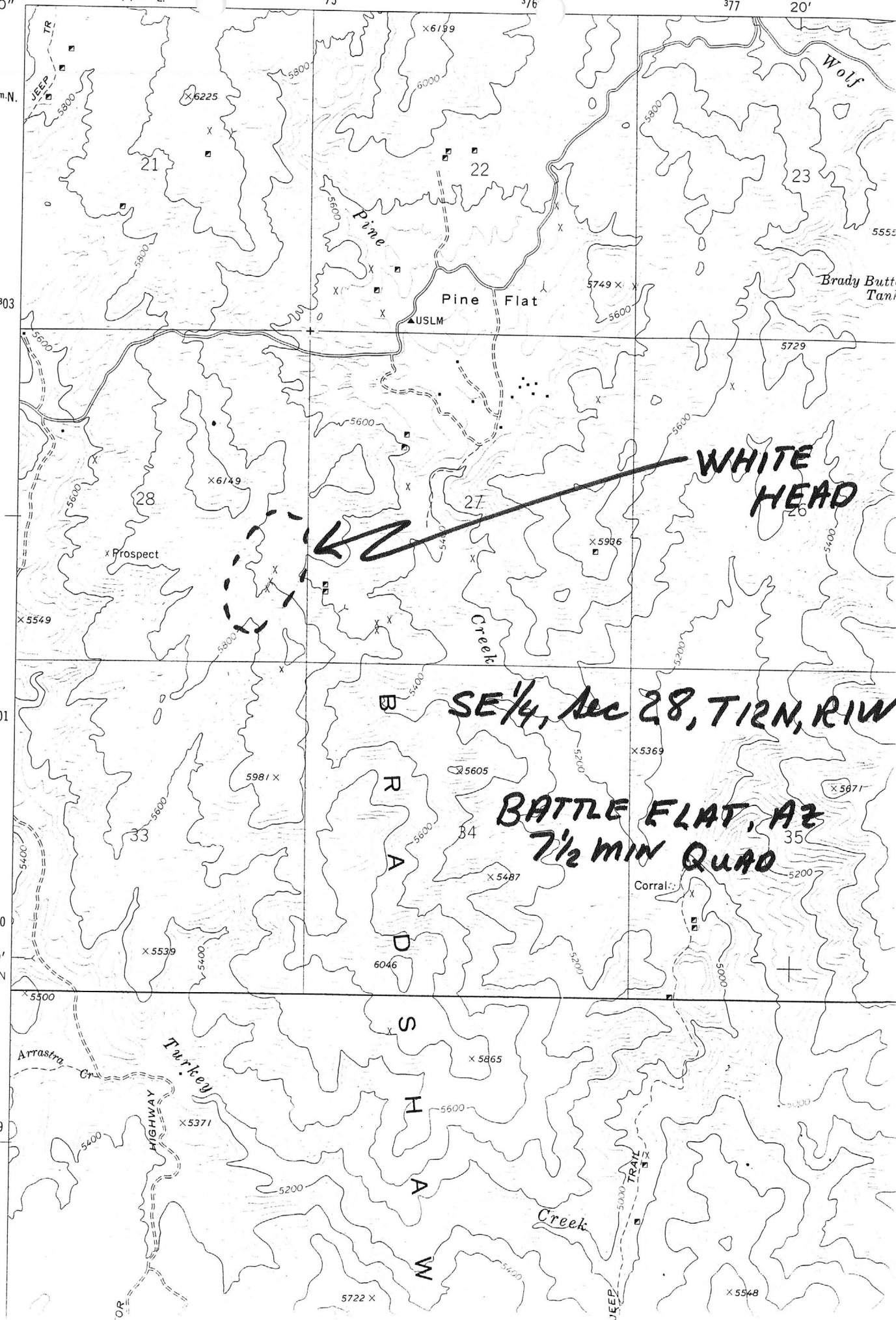
3803

3801

3800

20'
T 12 N

3799



ARIZONA DEPARTMENT OF MINES AND MINERAL RESOURCES

VERBAL INFORMATION SUMMARY

1. Information from: **File data**
Address:
2. Phone:
3. Mine: **White Head**
4. ADMMR Mine File: **White Head**
5. County: **Yavapai**
6. MILS Number: **1111B**
7. District: (mining) or (mineral)
8. Township: **12N** Range: **1W** Sec(s): **SE $\frac{1}{4}$, Sec 28**
9. USGS Topographic Map: **Battle Flat 7.5'**
10. Location (descriptive):
11. Number of Claims: **Patented**
Unpatented A portion of a larger group
12. Owner(s): (if different from above) **Gene Disselbret**
13. Address:
14. Operating Company:
15. Pertinent People and/or Firm:
16. Commodities: **Gold and Silver**
17. Operational Status:
18. Summary of information received, comments, etc.:

As a result of adding the Jaje Bar (file) to the AzMILS system it was determined that this occurrence corresponded to an unknown-Yavapai 1111B called Battle Flat 19. The Jaje Bar file contains information on the work of the Disselbret family sampling projects in the area in the early 1980's. The pertinent information has been copied from the Jaje Bar file has been copied to create a new file.

Date: 8/14/90

Ken A. Phillips

Arizona Testing Laboratories

817 West Madison · Phoenix, Arizona 85007 · Telephone 254-6181

For Mr. Phil Disselbret
14819 North 55th Avenue
Glendale, Arizona 85306

Date January 7, 1981

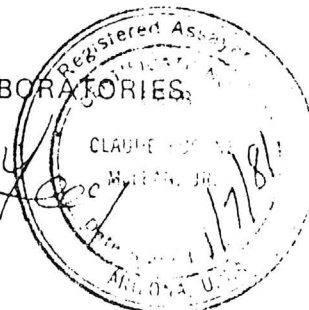
ASSAY CERTIFICATE

LAB NO.	IDENTIFICATION	OZ. PER TON		PERCENTAGES			
		GOLD	SILVER	COPPER			
9445	North 1	0.78	0.10	LITTLE SHOVEL - HANDPICKED GRAB SAMPLE FROM DUMP			
	South 2	0.02	trace	WHITE HEAD - GRAB SAMPLE FROM DRIFT DUMP			

Respectfully submitted,

ARIZONA TESTING LABORATORIES

Claude E. McLean, Jr.



Arizona Testing Laboratories

817 West Madison · Phoenix, Arizona 85007 · Telephone 254-6181

For Mr. Eugene Disselbret
14819 North 55th Avenue
Glendale, Arizona 85306

Date January 20~~th~~ 20, 1981

ASSAY CERTIFICATE

LAB NO.	IDENTIFICATION	OZ. PER TON		PERCENTAGES			
		GOLD	SILVER	COPPER			
9641	Jaje 14 W	Trace	0.20	JAJE 14' BELOW COLLAR - W. RIB, QTZ VEI			
	Jaje 26 N	Trace	2.6	JAJE 26' " " " " N. RIB, TRANSLU			
	Whitehead ↗	Trace	Trace	CROSS STRUCTURE - BACK OF 35' DRIFT AT FACE			

Respectfully submitted,

ARIZONA TESTING LABORATORIES

Claude E. McLean, Jr.



12°22'30" 374000m E. 375 376 377 20

