



CONTACT INFORMATION

Mining Records Curator
Arizona Geological Survey
1520 West Adams St.
Phoenix, AZ 85007
602-771-1601
<http://www.azgs.az.gov>
inquiries@azgs.az.gov

The following file is part of the

Arizona Department of Mines and Mineral Resources Mining Collection

ACCESS STATEMENT

These digitized collections are accessible for purposes of education and research. We have indicated what we know about copyright and rights of privacy, publicity, or trademark. Due to the nature of archival collections, we are not always able to identify this information. We are eager to hear from any rights owners, so that we may obtain accurate information. Upon request, we will remove material from public view while we address a rights issue.

CONSTRAINTS STATEMENT

The Arizona Geological Survey does not claim to control all rights for all materials in its collection. These rights include, but are not limited to: copyright, privacy rights, and cultural protection rights. The User hereby assumes all responsibility for obtaining any rights to use the material in excess of "fair use."

The Survey makes no intellectual property claims to the products created by individual authors in the manuscript collections, except when the author deeded those rights to the Survey or when those authors were employed by the State of Arizona and created intellectual products as a function of their official duties. The Survey does maintain property rights to the physical and digital representations of the works.

QUALITY STATEMENT

The Arizona Geological Survey is not responsible for the accuracy of the records, information, or opinions that may be contained in the files. The Survey collects, catalogs, and archives data on mineral properties regardless of its views of the veracity or accuracy of those data.

PRINTED: 09/06/2002

ARIZONA DEPARTMENT OF MINES AND MINERAL RESOURCES AZMILS DATA

PRIMARY NAME: WHITE GOLD

ALTERNATE NAMES:

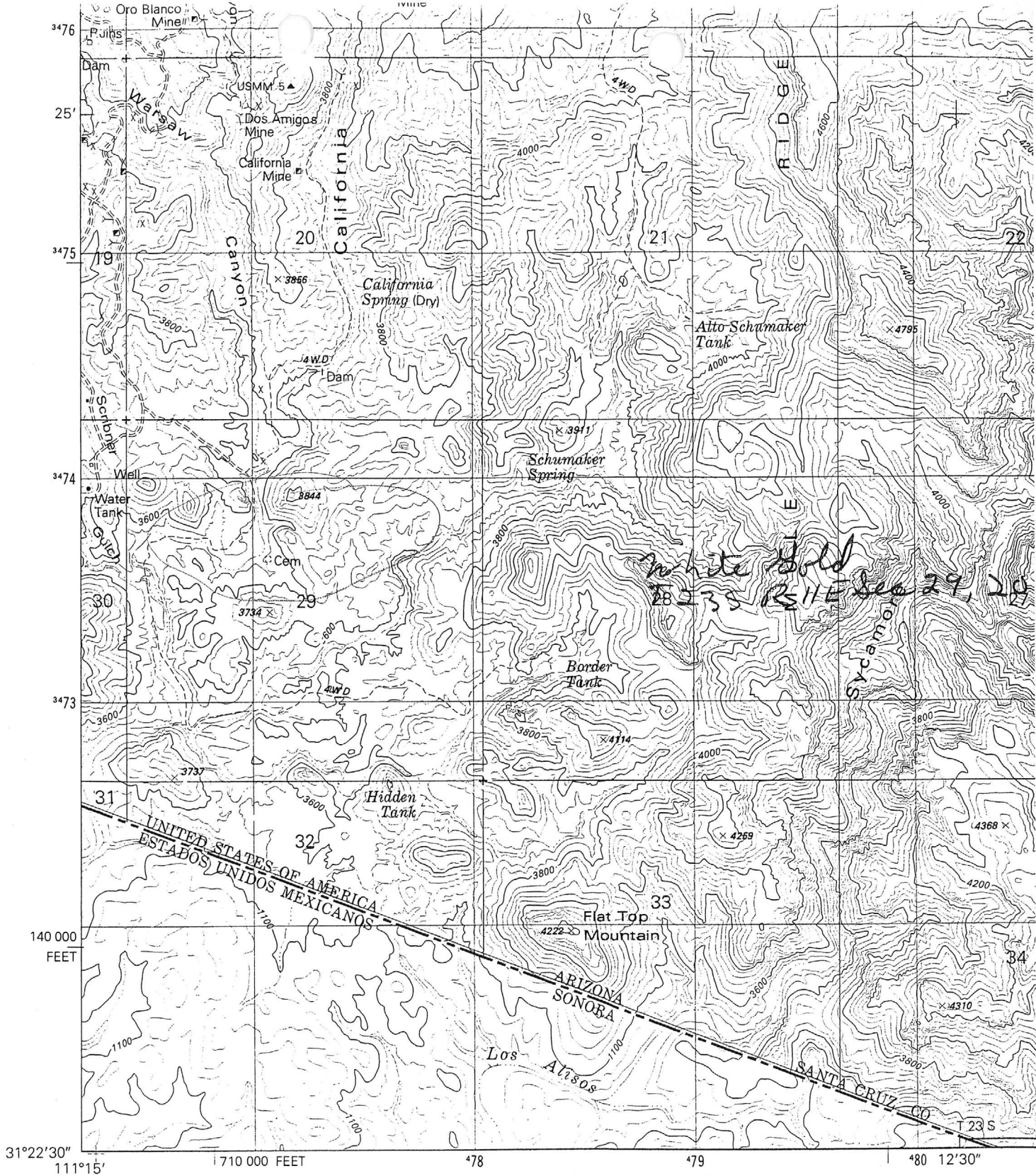
SANTA CRUZ COUNTY MILS NUMBER: 245

LOCATION: TOWNSHIP 23 S RANGE 11 E SECTION 29 QUARTER N2
LATITUDE: N 31DEG 23MIN 57SEC LONGITUDE: W 111DEG 14MIN 23SEC
TOPO MAP NAME: RUBY - 7.5 MIN

CURRENT STATUS: EXP PROSPECT

COMMODITY:
GOLD

BIBLIOGRAPHY:
ADMMR WHITE GOLD FILE



Produced by the United States Geological Survey

Control by USGS, NOS/NOAA, International Boundary and Water Commission, and Dirección General de Geografía del Territorio Nacional (DIGETENAL)

U.S. portion compiled by photogrammetric methods from aerial photographs taken 1975. Field checked 1976. Map edited 1981

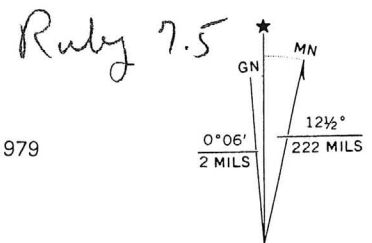
Mexico portion copied from DIGETENAL 1:50 000-scale map, La Bellotosa H12A39 dated 1979

Projection and 10,000-foot grid ticks: Arizona coordinate system, central zone (transverse Mercator)

1000-meter Universal Transverse Mercator grid, zone 12 1927 North American Datum

To place on the predicted North American Datum 1983 move the projection lines 9 meters south and 63 meters east as shown by dashed corner ticks

Certain land lines are omitted because of insufficient data



UTM GRID AND 1981 MAGNETIC NORTH DECLINATION AT CENTER OF SHEET

FC

ARIZONA DEPARTMENT OF MINES AND MINERAL RESOURCES

VERBAL INFORMATION SUMMARY

1. Mine file: WHITE GOLD
2. Mine name if different from above:
3. County: Santa Cruz
4. Information from: Andy Markos, Exploration Manager
Company: Zephyr Resources
Address: 5400 Equity Ave., Suite B
Reno, NV 89502
Phone: (702) 322-5501
5. Summary of information received, comments, etc.:

Reported they acquired the White Gold mine from NCA and plan exploration drilling. He reported the property contains a proven 25,000 ounces of gold and they want to double that reserve before planning an operation. They are currently getting bids from drillers for 4000 feet of drilling to be done in March 1989. The last companies to work on the property were Tenneco and Echo Bay.

Date: February 1, 1989

Ken A. Phillips, Chief Engineer *KAP*

WHITE GOLD

SANTA CRUZ COUNTY

CJH WR 1/13/84: Donald L. Anderson (c) Consultant (formerly Professor of Mining Engineering at the U. of Washington, Seattle and a personal friend, 1182 W. Camino Sagasta, Green Valley, Arizona 85614 Tel: 625-6278) reported that Tech corp is (or was) drilling on Bill Capelen's White gold claims out of Arivaca.

MG WR 4/13/84: Received a report that someone has recently drilled the White Gold property in Santa Cruz County. This property is a new listing. It is in the Oro Blanco District and consists of several claims in S $\frac{1}{2}$, Sec 20 and N $\frac{1}{2}$ Sec 29, T23S R11E.

MG WR 8/15/86: Received report that Tennaco Minerals will begin to drill the White Gold property (Santa Cruz County) this week. A Mr. Fred Saunders of the Carson City is in charge.

CJH WR 9/19/86: Visitor: Don Anderson, Consultant, Green Valley, Arizona (c) reported that NCA Minerals, Vancouver BC acting through Jay W. Santos, Consulting Geologist, Yerrington, Nevada has optioned all (or most) of their SE Santa Cruz County claims to Echo Bay Mines, Ltd, Edmonton, Alberta, Canada. Echo Bay is drilling (down the hole rig) 15-20 400' holes on the property in Warsaw Canyon near Vernon Dale's property.

MG WR 6/24/88: After completing considerable geologic work, including geo-chemical sampling and drilling of various targets, Echo Bay (card) has dropped its interest in the White Gold property (file) Santa Cruz County. It is rumored that La Teko Resource is reviewing the property data.

Advanced programs

Property	Echo Bay interest	Background	87 plans
1. Alaska-Juneau Alaska	85%	Large-tonnage, low-grade mine operated 1901-43.	Feasibility of optical ore-sorting being studied. Resource information being confirmed by drilling.
2. Cameron Lake Ontario	Up to 49%	Echo Bay can earn up to a 49% interest in Nuinsco Resources Ltd. by funding development of the Cameron Lake program. At year end, Echo Bay's interest was 27%.	Currently driving a decline ramp to examine deposit from underground. Drill indicated resource of 1.2 million tons containing 200,000 ounces gold.
3. Congress Arizona	Up to 51%	Property contains geological resource of 100,000 ounces gold.	Currently a decline ramp is being driven to access the deposit. Potential for small tonnage mine in 1988.
4. Cove Nevada	100%	Recently discovered gold deposit on McCoy mine property. Both high- and low-grade resources found.	Active drilling program to delineate mineralization. Currently open at depth and in most directions.
5. Easy Junior Nevada	100%	Geological resource of approximately 400,000 ounces gold indicated by drilling.	Drilling to determine extent of resource. Potential for open pit, heap leach operation.
6. Illipah Nevada	100%	55,000-ounce gold resource identified, including 33,800 ounces of ore reserves.	Being developed for production in 1987. Exploration will continue on the property.
7. Indin Lake Northwest Territories	75%	Extensive drilling on Main and Cass zones in 1985 and 1986.	Additional drilling is already underway on Cass.
8. Kettle River Republic, Washington	Up to 60%	The Granny and Key projects contain geological resources of 350,000 ounces gold.	\$1.1 million budgeted for delineation drilling and preliminary feasibility in 1987.
9. Randsburg California	100%	Geological resource of 260,000 ounces, including 184,900 ounces in reserves, in two surface deposits identified.	Feasibility study underway for possible 1988 production.

Early stage programs

10. Bagdad Chase California	100%	Drilling has outlined three areas of gold mineralization.	Further exploration being evaluated.
11. Bathurst Inlet Northwest Territories	100%	Properties cover 91,400 acres of Lupin-type iron formation.	Surface drilling.
12. Foreman Creek Nevada	100%	Claims located 5 miles north of Jerritt Canyon deposit.	Surface drilling.
13. Fryng Pan and East Walker River California-Nevada border	100%	Located on the westward continuation of the Fletcher Basin which contains the Borealis mine.	Exploration for Borealis-type gold deposits.
14. Herbert Glacier Alaska	100%	Property covers narrow vein system containing high-grade gold values.	Additional work to evaluate potential for small tonnage resource.
15. King Solomon Nevada	100%	Drilling has identified a geological resource of 100,000 ounces gold.	Drilling to define extent of the resource.
16. Lupin Region Northwest Territories	100%	103,000 acres of property extending 70 miles west from the Lupin mine.	Surface drilling.
17. Morgan Ranch Nevada	100%	Property covers large alteration system in volcanic rocks with surface gold anomalies.	Surface drilling
18. Oro Blanco Arizona	50%	20,000-ounce gold resource in stockwork vein system.	Drilling on additional alteration zones.
19. Williams Vein Alaska	100%	Quartz vein produced 24,000 tons grading 0.30 ounces per ton between 1931 and 1942.	Additional work to evaluate potential for small tonnage resource.

White Gold file (Santa Cruz Co.)

WHITE GOLD

MINESEARCH #: 101969
EXPL. STATUS: RESERVES DEVELOPMENT
ACTIVITY STATUS: ON HOLD
OWNER(S): NCA MINERALS INC - OPTIONOR
 ORMONT EXPLORATIONS LTD - OPTIONEE
STATE: ARIZONA
TOWN: ARIVACA
COUNTY: ~~PIMA~~ SANTA CRUZ
METAL(S): GOLD
 SILVER
OPERATION-TYPE: OPEN PIT
CURRENT AS OF: 1984

GENERAL COMMENTS

THE PROJECT IS ON HOLD AWAITING FINANCING.
 INDICATIONS ARE THAT THIS PROPERTY, CONSISTING OF AT LEAST FOUR
 GOLD-BEARING ZONES, CAN BE MINED BY OPEN-PIT METHODS AND TREATED BY
 HEAP LEACHING. (TML 11/9/83)

TRANSACTION REPORT

TRANSACTION DATE: 1983
TRANSACTION TYPE: EARN-IN

PARTY#1: N C A MINERALS
DESIGNATION 1: OPTIONOR
ORIGINAL INT 1: 100
POTENTIAL INT 1: 50

PARTY#2: ORMONT EXPLORATIONS LTD
DESIGNATION 2: OPTIONEE
ORIGINAL INT 2: 0
POTENTIAL INT 2: 50

TERMS AND CONDITIONS

ORMONT WILL PAY N C A MINERALS \$50,000 ON OR BEFORE 11/22/83 AND WILL
 RECEIVE THE RESULTS OF A DRILL PROGRAM WHICH BEGAN 11/7/83. AFTER
 RECEIVING THE DRILL RESULTS, ORMONT HAS UNTIL 2/28/84 TO DECIDE IF IT
 WANTS TO EXERCISE THE OPTION. IF IT DOES, IT CAN EARN 50% IN THE
 PROPERTY BY PAYING N C A MINERALS AN ADDITIONAL \$50,000 UPON EXECUTION
 OF THE AGREEMENT, SPENDING A MINIMUM OF \$500,000/YEAR ON THE PROPERTY,
 AND PLACING IT INTO PRODUCTION WITHIN THREE YEARS AT A RATE OF 300,000
 ST/YEAR. (TML 11/9/83)

TRANSACTION COMMENTS

NCA MINERALS HAS GRANTED ORMONT AN EXTENSION UNTIL 4/30/84 FOR ITS OVERDUE PAYMENT. DURING THAT TIME, ORMONT WILL TRY TO RAISE PRIVATE FUNDING FOR A DRILLING PROGRAM. (PC 4/84)

GEOLOGY REPORT

OREBODY TYPE 1: DISSEMINATED
ORE CONTROL 1: FAULTING

GEOLOGY COMMENTS

THE MINERALIZATION IS DISSEMINATED AND FAULTED ON ONE END. (PC 4/84)

WORK HISTORY

1983: THE CENTER ZONE HAS BEEN MAPPED; GEOCHEMISTRY AND DRILLING HAVE BEEN DONE ON THE PROPERTY, INDICATING SOME RESERVES: THE 15 TO 20 HOLES DRILLED WERE BETWEEN 100 AND 150 FT DEEP. (TML 11/9/83, PC 4/84)

CURRENT WORK PLAN

1984: IF FINANCING BECOMES AVAILABLE, FURTHER DRILLING WILL BE DIRECTED AT UPGRADING ORE RESERVES IN THE CENTER ZONE. (PC 4/84)

SUBCONTRACTORS

PETER G. MARSHALL, GEOLOGIST, REPORTED POTENTIAL RESERVES.

SAMPLE ANALYSIS INFORMATION

THE FARTHEST NW ZONE GAVE VALUES OF 0.01 TO 0.03 OZST AU ON THE SURFACE. (TML 11/9/83)

CORE DATA

ONE DRILL HOLE IN THE CENTER ZONE ASSAYED 0.114 OZST AU FROM THE SURFACE TO THE BOTTOM OF THE HOLE AT 107 FT. SIMILAR QUARTZ VEINING EXTENDS TO THE SE FOR AT LEAST 400 FT. (TML 11/9/83)

EXPLORATION COMMENTS

THE CENTER ZONE APPEARS TO BE A MINIMUM OF 100 FT WIDE AND 400 FT LONG. THE DEEPEST HOLE DRILLED IN THIS ZONE WAS 112 FT, WITH ALL THE HOLES BOTTOMING IN MINERALIZATION.

PREVIOUS DRILLING IN THREE ZONE FOUND GOLD, MINERALIZATION IN ALL HOLES WHICH PENETRATED THE QUARTZ-RICH ZONE. (TML 11/9/83)

RESERVES REPORT

ZONE NAME: CENTER ZONE
CERTAINTY: ESTIMATED
RESERVES: 450000 METRIC TONS
GRADE: GOLD 0.077 OUNCES PER METRIC TON
REFERENCE: TML 11/9/83

RESERVES COMMENTS

CERTAINTY WAS GIVEN AS "DRILLED POTENTIAL." MANY SILVER VALUES GRADED BETTER THAN ONE OZST.

COMPANY ADDRESS

NCA MINERALS CORP
700 - 509 RICHARDS ST.
VANCOUVER, BC V6B 2Z6
(604) 688-7095