



CONTACT INFORMATION

Mining Records Curator
Arizona Geological Survey
1520 West Adams St.
Phoenix, AZ 85007
602-771-1601
<http://www.azgs.az.gov>
inquiries@azgs.az.gov

The following file is part of the

Arizona Department of Mines and Mineral Resources Mining Collection

ACCESS STATEMENT

These digitized collections are accessible for purposes of education and research. We have indicated what we know about copyright and rights of privacy, publicity, or trademark. Due to the nature of archival collections, we are not always able to identify this information. We are eager to hear from any rights owners, so that we may obtain accurate information. Upon request, we will remove material from public view while we address a rights issue.

CONSTRAINTS STATEMENT

The Arizona Geological Survey does not claim to control all rights for all materials in its collection. These rights include, but are not limited to: copyright, privacy rights, and cultural protection rights. The User hereby assumes all responsibility for obtaining any rights to use the material in excess of "fair use."

The Survey makes no intellectual property claims to the products created by individual authors in the manuscript collections, except when the author deeded those rights to the Survey or when those authors were employed by the State of Arizona and created intellectual products as a function of their official duties. The Survey does maintain property rights to the physical and digital representations of the works.

QUALITY STATEMENT

The Arizona Geological Survey is not responsible for the accuracy of the records, information, or opinions that may be contained in the files. The Survey collects, catalogs, and archives data on mineral properties regardless of its views of the veracity or accuracy of those data.

02/10/88

ARIZONA DEPARTMENT OF MINES AND MINERAL RESOURCES FILE DATA

PRIMARY NAME: WHITE CROSS MINE

ALTERNATE NAMES:

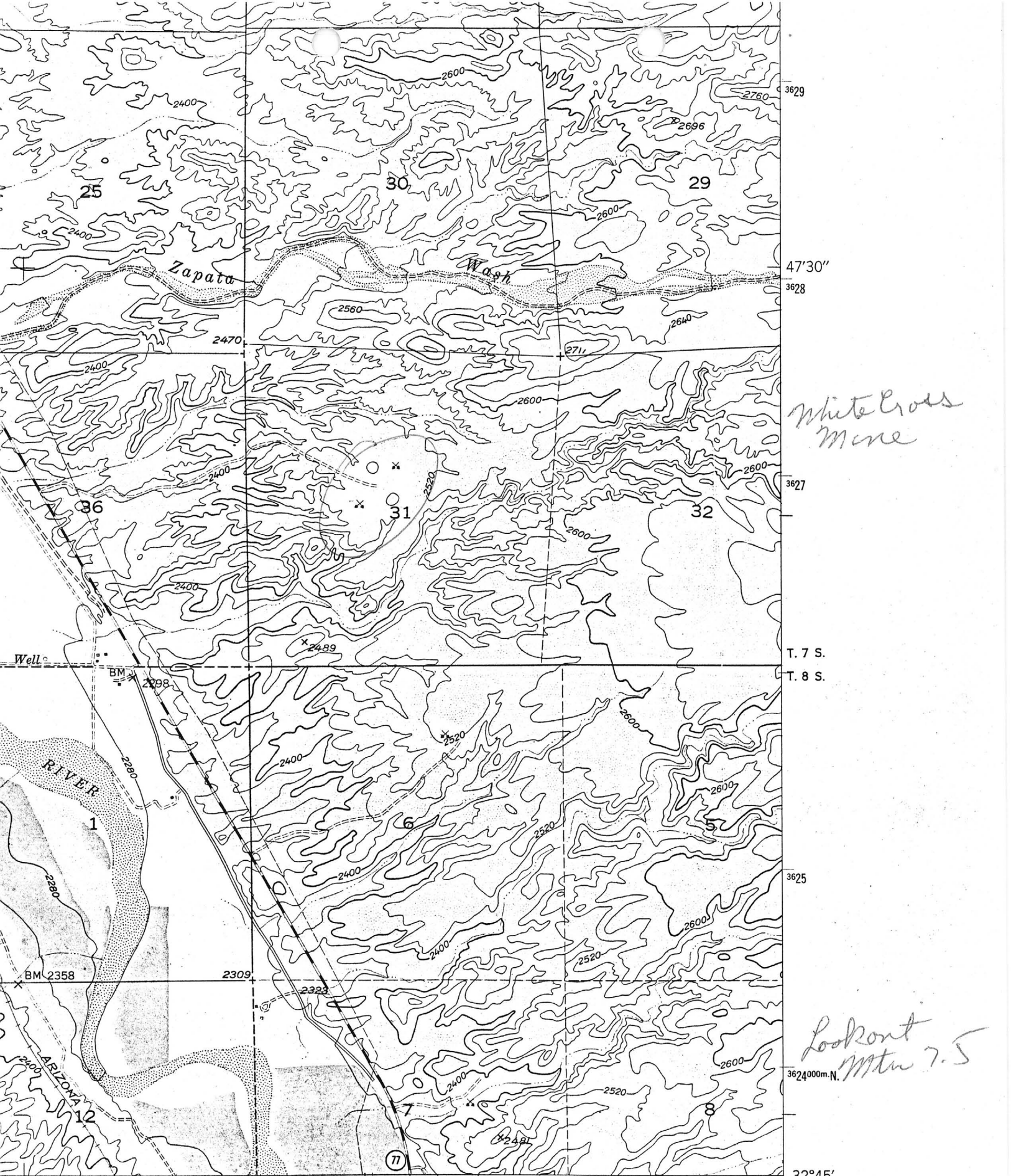
PINAL COUNTY MILS NUMBER: 519

LOCATION: TOWNSHIP 7 S RANGE 17 E SECTION 31 QUARTER NW
LATITUDE: N 32DEG 46MIN 55SEC LONGITUDE: W 110DEG 38MIN 50SEC
TOPO MAP NAME: LOOKOUT MTN - 7.5 MIN

CURRENT STATUS: PAST PRODUCER

COMMODITY:
GYPSUM

BIBLIOGRAPHY:
ADMMR WHITE CROSS MINE FILE



White Cross Mine

T. 7 S.
T. 8 S.

Lookout Mtn 7.5

40' 532 R. 16 E. R. 17 E. 533 534000m.E. 110°37'30" 32°45'

MAMMOTH 2.1 MI.
TUCSON 50 MI.

● INTERIOR—GEOLOGICAL SURVEY, WASHINGTON, D.C.—1973

ROAD CLASSIFICATION
1963

Medium-duty Light-duty

Unimproved dirt

(CLARK RANCH)
3849 II NE

ABSTRACTED FROM ADMMR ACTIVE MINES DIRECTORY, 1992

Pinal County

PINAL GYPSUM CORP.

White Cross Mine T7S R17E Sec. 31

P.O. Box 99, Coolidge, AZ 85228 - Phone 723-3131 - Employees: 12 - Quarry
four miles north of Mammoth - Used for agricultural gypsum.

President Orin Benton

Vice President (Operations) James Bechtel

Sales Manager Jerry Higginbothan

ABSTRACTED FROM ADMMR ACTIVE MINES DIRECTORY, 1991

PINAL GYPSUM CORP.

White Cross Mine T7S R17E Sec. 31

P.O. Box 99, Coolidge, AZ 85228 - Phone 723-3131 - Employees: 12 -
Quarry four miles north of Mammoth - Used for agricultural gypsum.

President

Orin Benton

Vice President James
Lewis

Vice President, Operations James Bechtel

ABSTRACTED FROM ADMMR ACTIVE MINES DIRECTORY, 1990

PINAL GYPSUM CORP.

White Cross Mine T7S R17E Sec. 31

P.O. Box 99, Coolidge, AZ 85228 - Phone 723-3131 - Employees: 12 -
Quarry four miles north of Mammoth - Used for agricultural gypsum.

President Orin Benton

Vice President James Lewis

Vice President, Operations James Bechtel

ABSTRACTED FROM ADMMR ACTIVE MINES DIRECTORY, 1989

PINAL GYPSUM CORP.

White Cross Mine

T7S R17E Sec. 31

P.O. Box 99, Coolidge 85228 - Phone 723-3131 - Employees 12 - Quarry four miles north of Mammoth - Used for agricultural gypsum.

President Orin Benton
Vice President James Lewis
Vice President, Operations James Bechtel

ABSTRACTED FROM ADMMR ACTIVE MINES DIRECTORY, 1988

PINAL GYPSUM CORP.

White Cross Mine

T7S R17E Sec. 31

P.O. Box 99, Coolidge 85228 - Phone 723-3131 - Employees 12 - Quarry four miles north of Mammoth - Used for agricultural gypsum.

President Orin Benton
Vice President James Lewis
Vice President, Operations James Bechtel

WHITE CROSS MINE

PINAL COUNTY

NJN WR 11/27/87: Jim Bechtel of Pinal Gypsum Corp (card) reports that the White Cross Mine is located in T7S R17E Sec 31, NW (Pinal County). Pinal AZMILS #519, 2 Borrow Pits, is at this location.
