



CONTACT INFORMATION

Mining Records Curator
Arizona Geological Survey
1520 West Adams St.
Phoenix, AZ 85007
602-771-1601
<http://www.azgs.az.gov>
inquiries@azgs.az.gov

The following file is part of the

Arizona Department of Mines and Mineral Resources Mining Collection

ACCESS STATEMENT

These digitized collections are accessible for purposes of education and research. We have indicated what we know about copyright and rights of privacy, publicity, or trademark. Due to the nature of archival collections, we are not always able to identify this information. We are eager to hear from any rights owners, so that we may obtain accurate information. Upon request, we will remove material from public view while we address a rights issue.

CONSTRAINTS STATEMENT

The Arizona Geological Survey does not claim to control all rights for all materials in its collection. These rights include, but are not limited to: copyright, privacy rights, and cultural protection rights. The User hereby assumes all responsibility for obtaining any rights to use the material in excess of "fair use."

The Survey makes no intellectual property claims to the products created by individual authors in the manuscript collections, except when the author deeded those rights to the Survey or when those authors were employed by the State of Arizona and created intellectual products as a function of their official duties. The Survey does maintain property rights to the physical and digital representations of the works.

QUALITY STATEMENT

The Arizona Geological Survey is not responsible for the accuracy of the records, information, or opinions that may be contained in the files. The Survey collects, catalogs, and archives data on mineral properties regardless of its views of the veracity or accuracy of those data.

09/25/98

ARIZONA DEPARTMENT OF MINES AND MINERAL RESOURCES FILE DATA

PRIMARY NAME: WHITE CLOUD PAT. 1494

ALTERNATE NAMES:

MARICOPA COUNTY MILS NUMBER: 308

LOCATION: TOWNSHIP 7 N RANGE 3 W SECTION 15 QUARTER W2
LATITUDE: N 33DEG 56MIN 56SEC LONGITUDE: W 112DEG 33MIN 57SEC
TOPO MAP NAME: RED PICACHO - 7.5 MIN

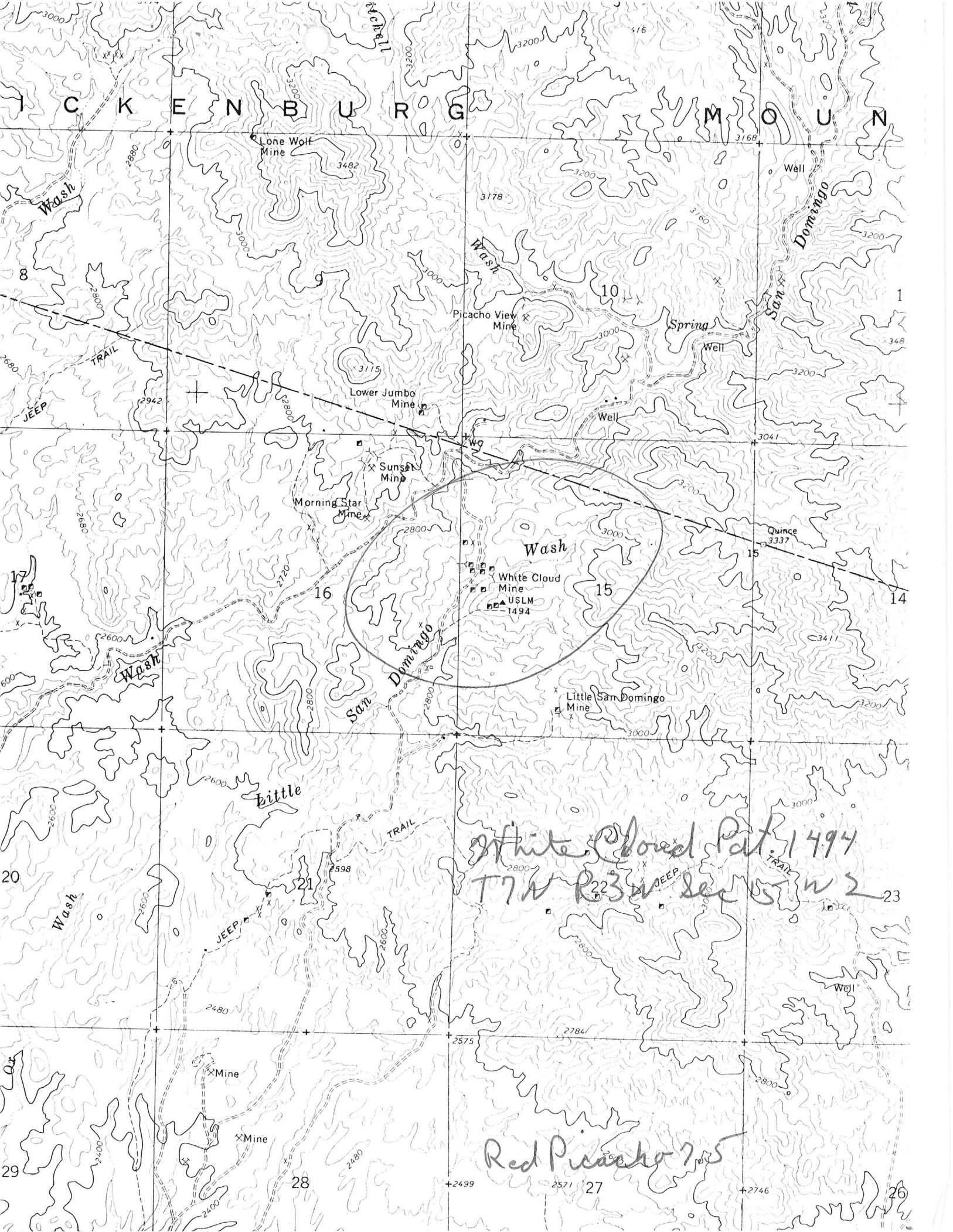
CURRENT STATUS: PAST PRODUCER

COMMODITY:

GOLD LODE

BIBLIOGRAPHY:

ADMMR WHITE CLOUD PAT. 1494 FILE
USGS RED PICACHO QUAD
BLM MINING DISTRICT SHEET
BLM MINERAL SURVEY MS 1494



I C K E N B U R G M O U N

Lone Wolf Mine

Picacho View Mine

Lower Jumbo Mine

Sunset Mine

Morning Star Mine

White Cloud Mine

USLM 1494

Little San Domingo Mine

White Cloud Pat. 1494
T7N R3W Section 22

Red Piacha 7.5

WHITE CLOUD PAT. 1494

MARICOPA COUNTY

KAP WR 1/17/86: In the Company of Nyal Niemuth, a visit was made to the White Cloud Mine, Maricopa County in the W2, Sec 15, T7N R3W. The main dump has been sampled in the last few years. By visual examination, it appears the dump contains mainly develop~~ed~~^{ment} rock. A field summary report has been written.

MINE AND INSPECT FIELD VISIT DATA SUMMARY

Sheet 1 of 2

COMMODITIES Gold, copper

MILS ID No. Maricopa 308 Date Jan 15, 1986

ENGINEER Ken A. Phillips & Nyal Niemuth

INFORMATION FROM: Field visit on above date by Ken Phillips & Nyal Niemuth

PROPERTY SUMMARY

I. MINE NAME White Cloud Pat. 1494 OTHER POSSIBLE NAMES
INCLUDING ANY CLAIM NAMES NOTED

II. LOCATION: T 7N R 3W SEC(S) 15 (SW, NW) MINE DISTRICT White Picacho
ELEV. 2900 COUNTY Maricopa TOPO QUAD. Red Picacho 7.5
DIRECTIONS

MAP ATTACHED

III. OWNERSHIP: NAME _____ PHONE _____
ADDRESS: _____
COMPANY NAME IF ANY: _____
PERTINENT PEOPLE _____

IV. PROPERTY AND HOLDINGS:

V. PAST PRODUCTION - NOTED, KNOWN, PROBABLE, UNKNOWN, NONE Undoubtedly

VI. CURRENT STATUS: Past producer

VII. WORKINGS: Main collar caved at main (6 X 9) shaft, numerous open cuts, stopes
and smaller shafts. Main dump 5-15 K tons.

VIII. GEOLOGY AND MINERALOGY: DEPOSIT TYPE: Fissure vein - quartz breccia
LENGTH: not determined WIDTH: not determined VEIN STRIKE E -W DIP steeply
to the N
HOST ROCK: Yavapai schist with some volcanic cover
ECONOMIC MINERALS: Noted quartz, galena, mimetite, calcite, relic sulfides,
trace of copper oxide.
COMMENTS: Amphibolite schist is dominant.

IX. EQUIPMENT ON SIGHT: None

X. SAMPLING: NOTE TYPE IF ANY, DRILLING? A number of pits have been made and
sampled in the main dump.

XI. REFERENCES AND REMARKS _____