



## **CONTACT INFORMATION**

Mining Records Curator  
Arizona Geological Survey  
1520 West Adams St.  
Phoenix, AZ 85007  
602-771-1601  
<http://www.azgs.az.gov>  
[inquiries@azgs.az.gov](mailto:inquiries@azgs.az.gov)

The following file is part of the

Arizona Department of Mines and Mineral Resources Mining Collection

## **ACCESS STATEMENT**

These digitized collections are accessible for purposes of education and research. We have indicated what we know about copyright and rights of privacy, publicity, or trademark. Due to the nature of archival collections, we are not always able to identify this information. We are eager to hear from any rights owners, so that we may obtain accurate information. Upon request, we will remove material from public view while we address a rights issue.

## **CONSTRAINTS STATEMENT**

The Arizona Geological Survey does not claim to control all rights for all materials in its collection. These rights include, but are not limited to: copyright, privacy rights, and cultural protection rights. The User hereby assumes all responsibility for obtaining any rights to use the material in excess of "fair use."

The Survey makes no intellectual property claims to the products created by individual authors in the manuscript collections, except when the author deeded those rights to the Survey or when those authors were employed by the State of Arizona and created intellectual products as a function of their official duties. The Survey does maintain property rights to the physical and digital representations of the works.

## **QUALITY STATEMENT**

The Arizona Geological Survey is not responsible for the accuracy of the records, information, or opinions that may be contained in the files. The Survey collects, catalogs, and archives data on mineral properties regardless of its views of the veracity or accuracy of those data.

04/20/87

ARIZONA DEPARTMENT OF MINES AND MINERAL RESOURCES FILE DATA

PRIMARY NAME: WHAT BRECCIA PIPE

ALTERNATE NAMES:

MOHAVE COUNTY MILS NUMBER: 749

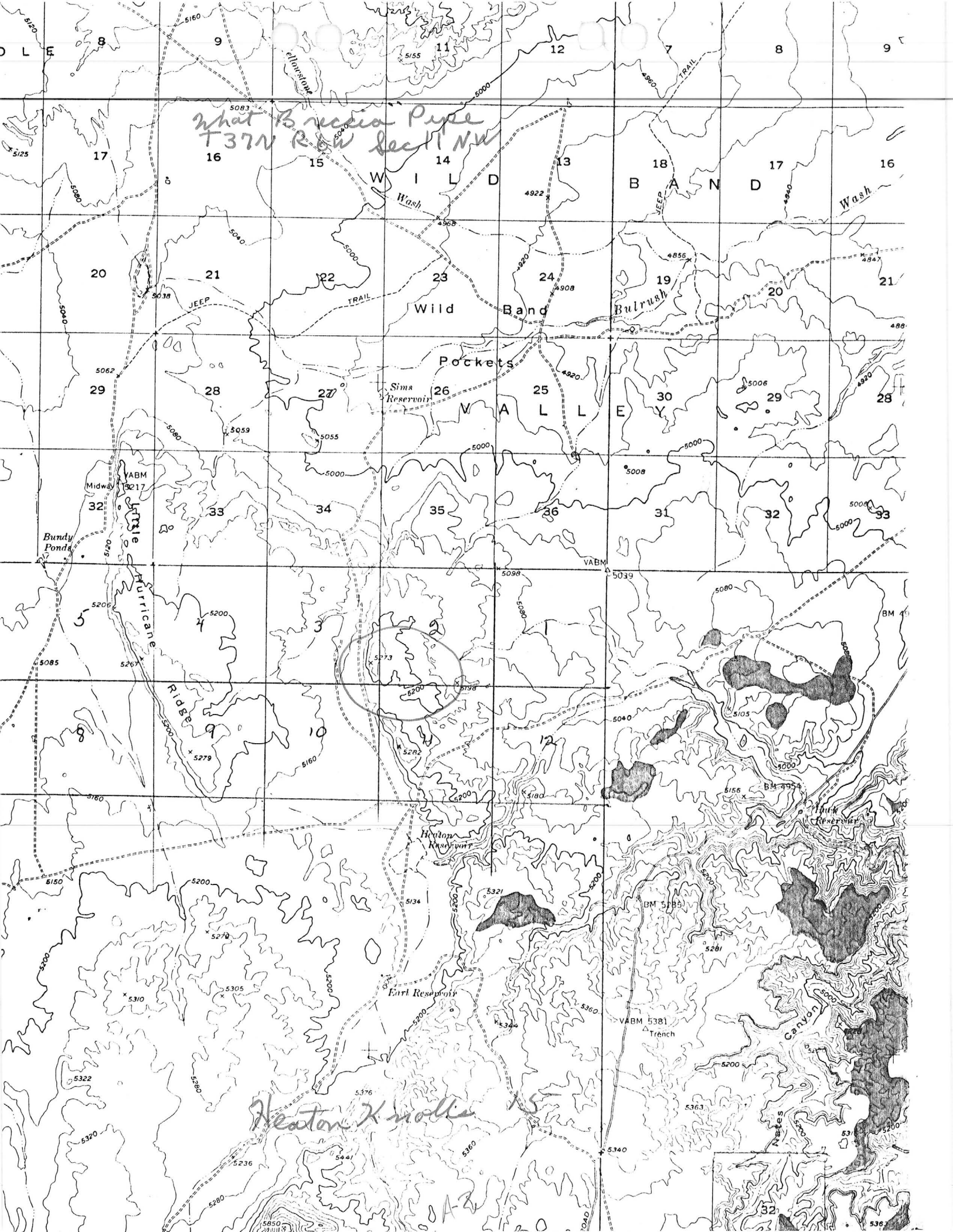
LOCATION: TOWNSHIP 37 N RANGE 6 W SECTION 11 QUARTER <sup>NW</sup>  
LATITUDE: N 36DEG 45MIN SEC LONGITUDE: W 112DEG 52MIN SEC  
TOPO MAP NAME: HEATON KNOLLS - 15 MIN

CURRENT STATUS: EXP PROSPECT

COMMODITY:  
URANIUM

BIBLIOGRAPHY:  
ADMMR WHAT BRECCIA PIPE FILE

A-1



What Bussia Pipe  
T37N R6W Sect 14

Wild Band

Pockets

Sims Reservoir

Heaton Reservoir

Earl Reservoir

Heaton Knolls

SAB

VABM 5217

VABM

VABM 5381 Trench

BM 4954

BM 5385

BM 4954

536

WHAT BRECCIA PIPE

MOHAVE COUNTY

NJN WR 2/27/87: Dieter Krwedl, District Manager for Pathfinder Mines (c) reports that Pathfinder has discovered five new breccia pipes on the north rim over the last three years. He has subsequently sent me their locations.

EZ 1 Breccia Pipe T37N R6W Sec 2  
EZ 2 Breccia Pipe T37N R6W Sec 3  
What Breccia Pipe T37N R6W Sec 11  
John Breccia Pipe T37N R7W Sec 1  
CLH Breccia Pipe T38N R7W Sec 34

---

B-1