



CONTACT INFORMATION

Mining Records Curator
Arizona Geological Survey
1520 West Adams St.
Phoenix, AZ 85007
602-771-1601
<http://www.azgs.az.gov>
inquiries@azgs.az.gov

The following file is part of the

Arizona Department of Mines and Mineral Resources Mining Collection

ACCESS STATEMENT

These digitized collections are accessible for purposes of education and research. We have indicated what we know about copyright and rights of privacy, publicity, or trademark. Due to the nature of archival collections, we are not always able to identify this information. We are eager to hear from any rights owners, so that we may obtain accurate information. Upon request, we will remove material from public view while we address a rights issue.

CONSTRAINTS STATEMENT

The Arizona Geological Survey does not claim to control all rights for all materials in its collection. These rights include, but are not limited to: copyright, privacy rights, and cultural protection rights. The User hereby assumes all responsibility for obtaining any rights to use the material in excess of "fair use."

The Survey makes no intellectual property claims to the products created by individual authors in the manuscript collections, except when the author deeded those rights to the Survey or when those authors were employed by the State of Arizona and created intellectual products as a function of their official duties. The Survey does maintain property rights to the physical and digital representations of the works.

QUALITY STATEMENT

The Arizona Geological Survey is not responsible for the accuracy of the records, information, or opinions that may be contained in the files. The Survey collects, catalogs, and archives data on mineral properties regardless of its views of the veracity or accuracy of those data.

PRINTED: 09/06/2002

ARIZONA DEPARTMENT OF MINES AND MINERAL RESOURCES AZMILS DATA

PRIMARY NAME: WEEKEND

ALTERNATE NAMES:
ISOM

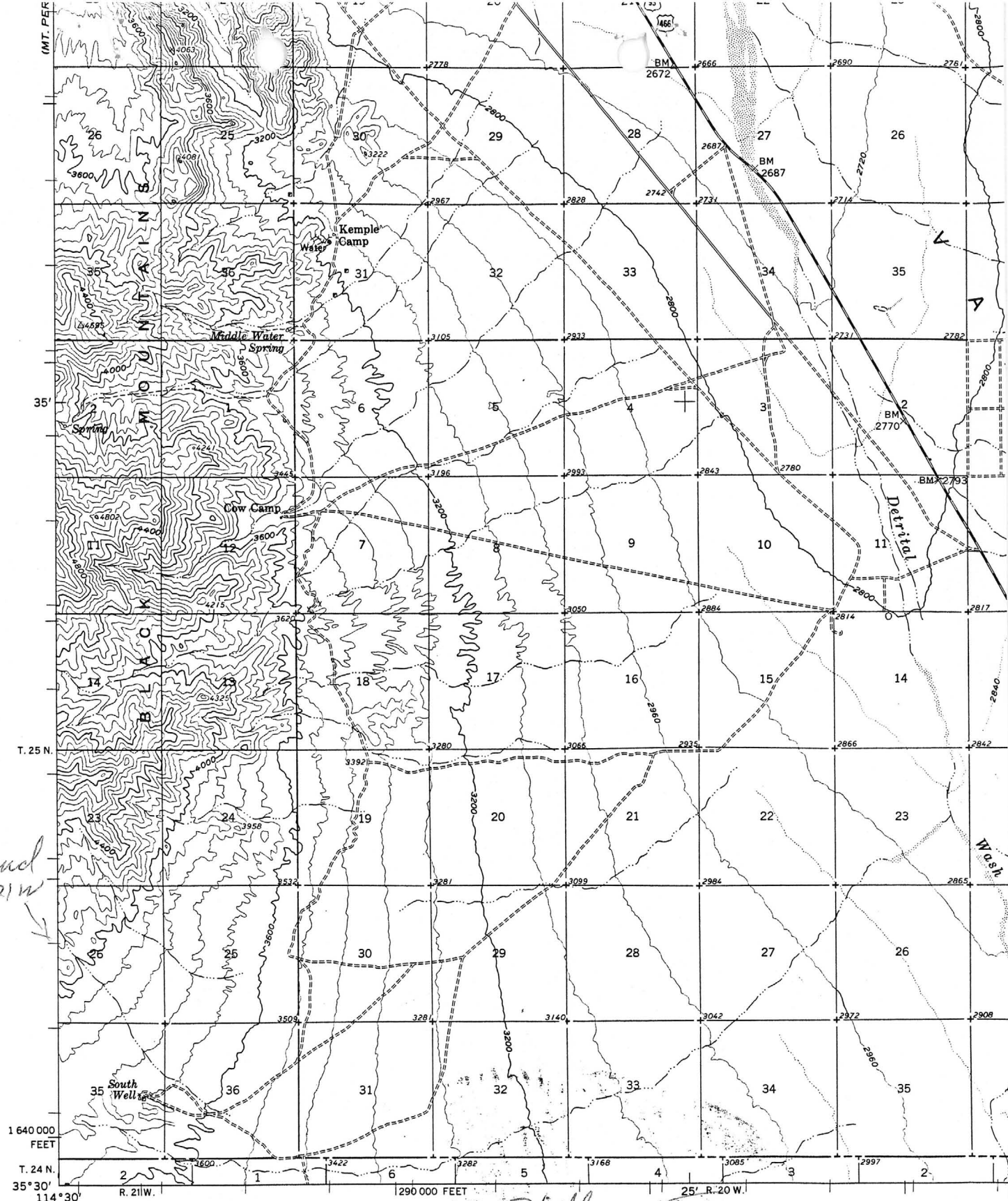
MOHAVE COUNTY MILS NUMBER: 773

LOCATION: TOWNSHIP 25 N RANGE 21 W SECTION 26 QUARTER W2
LATITUDE: N 35DEG 31MIN 31SEC LONGITUDE: W 114DEG 29MIN 59SEC
TOPO MAP NAME: WHITE HILLS - 15 MIN

CURRENT STATUS: UNKNOWN

COMMODITY:
GOLD
SILVER
COPPER

BIBLIOGRAPHY:
ADMMR WEEKEND FILE
SEE ADMMR LUCKY STRIKE GROUP FILE - MAP



*Weekend
T. 25 N. R. 21 W.
Sec 26*

White Hills - 15

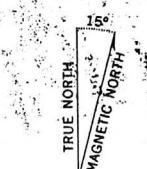
Mapped, edited, and published by the Geological Survey
Control by USGS and USC&GS

Topography from aerial photographs by photogrammetric methods
Aerial photographs taken 1958. Field check 1960

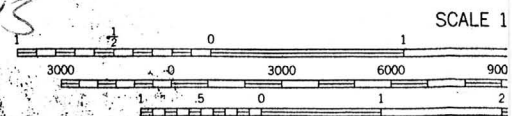
Polyconic projection. 1927 North American datum
10,000-foot grid based on Arizona coordinate system, west zone
1000-meter Universal Transverse Mercator grid ticks,
zone 11, shown in blue

Landlines unsurveyed in part of T. 27 N. - R. 21 W.

(SPIRIT MOUNTAIN)



APPROXIMATE MEAN
DECLINATION, 1960



THIS MAP COMPLIES WITH NATIO
FOR SALE BY U. S. GEOLOGICAL SURVEY, DEN
A FOLDER DESCRIBING TOPOGRAPHIC MAPS

DEPARTMENT OF MINERAL RESOURCES

STATE OF ARIZONA
FIELD ENGINEERS REPORT

Mine Isom Claim Group

Date August 28, 1979

District Minnesota, Mohave County

Engineer C. J. Hicks

Subject: Field examination

Barry Craig Isom, 4015 Martin, Las Vegas, Nevada, ph. (702) 361-2432 holds 45% interest in 78 unpatented claims. His partners are: Jerry Stiber, 1370 Flamingo Rd., Las Vegas, Nevada 89109, ph. (702) 732-4126, Henry Menco and Dick Gondini.

The claims are located in Secs. 22,23 and 26, T5N, R21W Minnesota Mining District, Mohave County, AZ. Access is by driving northwest from Kingman on US Hwy 93 to the intersection with Cottonwood Rd. (3 miles southwest of Dolan Springs Rd.) then 7 miles east on Cottonwood Rd. to a dozed mine access road which takes off to the north for 2 miles. The claims are crisscrossed with dozered roads and contain numerous test pits which represent some years of assessment work.

The claim area is one of moderate to high relief on the eastern slope of the Black Mountains at an average elevation of 4000 ft. Vegetation is sparse with desert grasses and shrubs. Washes are dry but several seeps and one spring were noted.

The country rock is Precambrian schist and granite gneiss. It is sparsely stockworked with quartz stringers. A rhyolite dike was noted on the Lucky Strike No. 11 claim.

Visible ore mineralization exposed in outcrops and test pits was spotty and meager consisting of chrysocolla, cuprite, magnetite and specular hematite as blebs and fissure fillings in granite gneiss.

Mr. Isom reported that he had collected (on the Lucky Strke #11) one specimen carrying good tungsten (see assay report). Additionally, some other samples from the Lucky Strike #11 claim carried minor rare earth values (see assy report).

Two drill holes, 100ft.apart, on Lucky Strike#11 claim reportedly encountered a void at 80ft. depth. Mr. Isom said that the void continued for 150ft. He is considering sinking a shaft or driving an intercept adit to explore the void as a possible source of collector quality mineral crystals.