



CONTACT INFORMATION

Mining Records Curator
Arizona Geological Survey
1520 West Adams St.
Phoenix, AZ 85007
602-771-1601
<http://www.azgs.az.gov>
inquiries@azgs.az.gov

The following file is part of the

Arizona Department of Mines and Mineral Resources Mining Collection

ACCESS STATEMENT

These digitized collections are accessible for purposes of education and research. We have indicated what we know about copyright and rights of privacy, publicity, or trademark. Due to the nature of archival collections, we are not always able to identify this information. We are eager to hear from any rights owners, so that we may obtain accurate information. Upon request, we will remove material from public view while we address a rights issue.

CONSTRAINTS STATEMENT

The Arizona Geological Survey does not claim to control all rights for all materials in its collection. These rights include, but are not limited to: copyright, privacy rights, and cultural protection rights. The User hereby assumes all responsibility for obtaining any rights to use the material in excess of "fair use."

The Survey makes no intellectual property claims to the products created by individual authors in the manuscript collections, except when the author deeded those rights to the Survey or when those authors were employed by the State of Arizona and created intellectual products as a function of their official duties. The Survey does maintain property rights to the physical and digital representations of the works.

QUALITY STATEMENT

The Arizona Geological Survey is not responsible for the accuracy of the records, information, or opinions that may be contained in the files. The Survey collects, catalogs, and archives data on mineral properties regardless of its views of the veracity or accuracy of those data.

PRINTED: 09/06/2002

ARIZONA DEPARTMENT OF MINES AND MINERAL RESOURCES AZMILS DATA

PRIMARY NAME: WEARY BONES

ALTERNATE NAMES:

MARICOPA COUNTY MILS NUMBER: 751

LOCATION: TOWNSHIP 4 N RANGE 9 E SECTION 8 QUARTER NW
LATITUDE: N 33DEG 42MIN 23SEC LONGITUDE: W 111DEG 27MIN 20SEC
TOPO MAP NAME: MINE MOUNTAIN - 7.5 MIN

CURRENT STATUS: EXP PROSPECT

COMMODITY:
GOLD

BIBLIOGRAPHY:
ADMMR WEARY BONES FILE

A Worri & Daryl Price - in process of incorp

① 20K 1% of net 5 yrs

② Payor net aft expenses on monthly basis \approx gross 22M w 4M to op (per year)

③ no guarantee on monthly - ~~no~~ set \$

④ ok to go down to bedrock

⑤ lode claim

⑥ plan of oper. with ranges & bound

Block Rock 386

B \$19,999 or less 50% over 1 yr with early pay off owner option for 2 yrs w/ opps to re-invest

length tail or 10-31 until \$ accum or sufficient

orig amt only - with owners opt whether you re-invest

Weary Bones Mining Co

old 2 (Please look) Eugene H. Adams in BLM

lawyer Scott Donaldson - ATTORNEY

of Platt & Westby P.C.
2916 N 7 Ave

Pay 85013

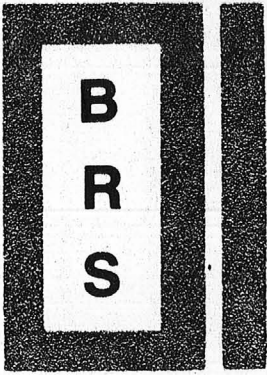
77-4441

Platinum in Yellowstone Park

Sept '85 issue Nevada

Home 345-1390
Don Price

'85 Jan Feb Mining Journal Pt in Cal



BAHAMIAN REFINING SERVICES & MINING EQUIPMENT COMPANY
CUSTOM REFINING & EQUIPMENT, METALLURGICAL CONSULTING

9222 N. 14th AVE., PHOENIX, ARIZONA 85021
(602) 279-9702

April 18, 1985

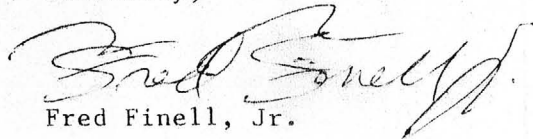
Gene Martin
19601 N. 7th St. Apt. 1099
Phoenix, AZ 85024

Dear Mr. Martin:

By actual recovery, using both hydrochemical and ferrometallurgical methods, all is ozs. per ton, your values are as follows:

Upper 2069	.02 gold	Tr silver	Pt ++
Lower 2090	.09 gold	.03 silver	Pt ++

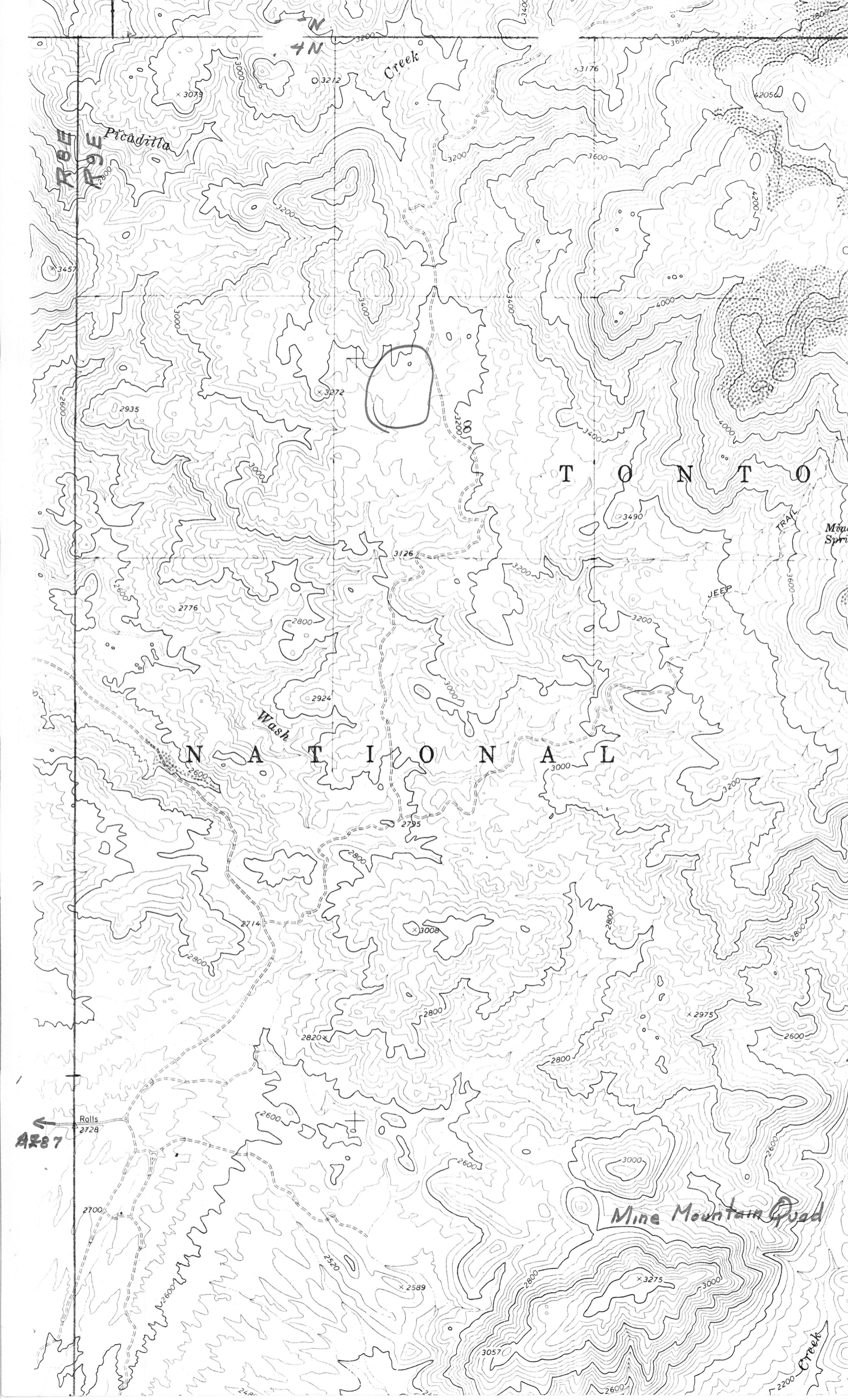
Sincerely,


Fred Finell, Jr.

FF:kt

50 T = 1 3/3 gold

10,000 x 100 = 1,000,000
330
3000
150,000



WEARY BONES

MARICOPA COUNTY

RRB WR 9/20/85: It was reported that the Weary Bones Mining Co, 6236 N. Black Canyon Highway, 404, Phoenix, Arizona 85017 (Canyon Palms Apartments) is selling shares in its proposed operation at the Weary Bones #1 Placer claim in the NW $\frac{1}{2}$, Sec 8, T4N R9E. (Six miles by odometer from Arizona 87 on the Four Peaks Road.) They have filed a plan of operations with the Mesa District, Tonto National Forest, and listed principals as: Gene Martin, President; Mike Jones, Jack Hermes, Dick Whitney and Don Price. They claim to be in the process of incorporating but the Corporation Commission has no record of them. They are offering two investment plans. Plan A- \$20,000 buys 1% of the net returns. (They expect to gross approx. \$22 million and have \$4 in expenses thereby netting \$18 million per year.) The returns are to be paid monthly with no guaranteed monthly amount. Plan B- \$19,999 or less will pay 50% over first year with early payoff at owners option (or something like that). The assays, metallurgy and equipment to be acquired from Bahamian Refining Co.

RRB WR 8/28/87: Visited Weary bones (file). All equipment has been removed. Dick Whitney is living on the property and reports that the Weary bones Company is no longer associated with the property and that he has the claims leased from the Lewis family. He is using a magnetic separator to make a concentrate that he gets refined in town according to him.

Frank

WEARY BONES (F)

85612200



STATE MINE INSPECTOR

DEC 12 1985

Office of State Mine Inspector

705 West Wing, Capitol Building
Phoenix, Arizona 85007
602-255-5971

RECEIVED
JAN 29 1986
DEPT. OF MINES &
MINERAL RESOURCES

NOTICE TO ARIZONA STATE MINE INSPECTOR

In compliance with Arizona Revised Statute Section 27-303*, we are submitting this written notice to the Arizona State Mine Inspector (705 West Wing, Capitol Building, Phoenix, Arizona 85007) of our intent to start/stop (please circle one) a mining operation.

COMPANY NAME WEARY BONES, INC

CHIEF OFFICER VIRGIL E. MARTIN (PRESIDENT)

COMPANY ADDRESS 6236 N. BLACK CANYON HWY #204 PHX AZ 85007

COMPANY TELEPHONE NUMBER 602-433-0882

MINE OR PLANT NAME WEARY BONES #1

MINE OR PLANT LOCATION (including county and nearest town, as well as directions for locating by vehicle)

2 1/2 miles Northeast of Fountain Hills, AZ in
MARICOPA County. Mine location is 6 1/2 miles from
HWY 87 on Four Peaks Rd (FS 143) on west side of road.

TYPE OF OPERATION PLACER/LODE PRINCIPAL PRODUCT GOLD

STARTING DATE JAN, 1986 CLOSING DATE UNKNOWN

DURATION OF OPERATION UNKNOWN

PERSON SENDING THIS NOTICE VIRGIL E. MARTIN

TITLE OF PERSON SENDING THIS NOTICE PRESIDENT

DATE NOTICE SENT TO STATE MINE INSPECTOR 12-11-85

*A.R.S. Section 27-303 NOTIFICATION TO INSPECTOR OF BEGINNING OR SUSPENDING OPERATIONS: When mining operations are commenced in any mine or when operations therein are permanently suspended, the operator shall give written notice to the inspector at his office prior to commencement or suspension of operations.

8

DEPARTMENT OF MINERAL RESOURCES
STATE OF ARIZONA
FIELD ENGINEERS REPORT

Mine Weary Bones Mine

Date December 13, 1985

District

Engineer Richard R. Beard

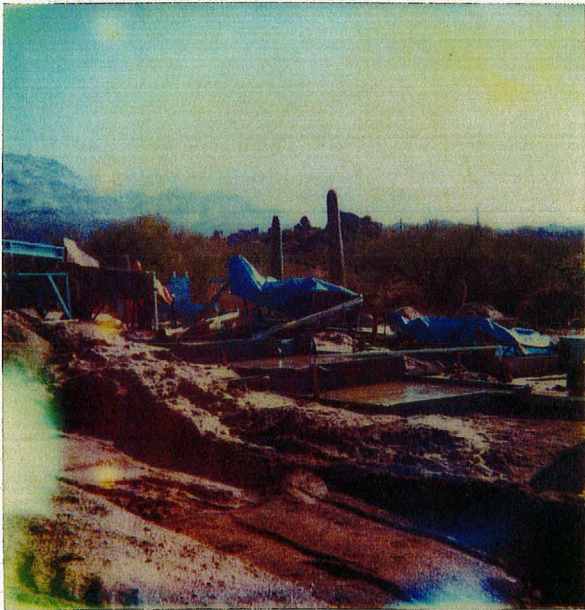
Subject: Mine Visit

Information from: Gene Martin, President

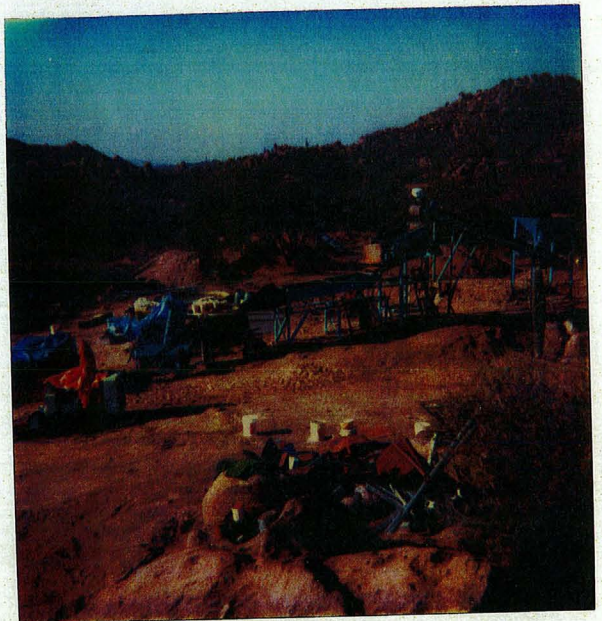
Operating company: Weary Bones, Inc.
6236 N. Black Canyon, 204
Phoenix, AZ 85017

Property located in NW1/4, Sec. 8, T4N R9E on Mine Mountain Quad.

Richard Whitney and Mike Jones were also on the property. Plant consists of a hopper, belt, screen, sluice, feeder and two shaker tables. (see photos) Mr. Martin said that production would start at 25 tons/day after New Years. He reports that the head assays are from 300 to 400 dollars a ton with the major values in the platinum group. He showed me some red concentrate which he identified as rhodium. He said that the ore has been checked out qualitatively and quantitatively by the Colorado School of Mines and a "couple of local chemists with a reputation for reliability and honesty"



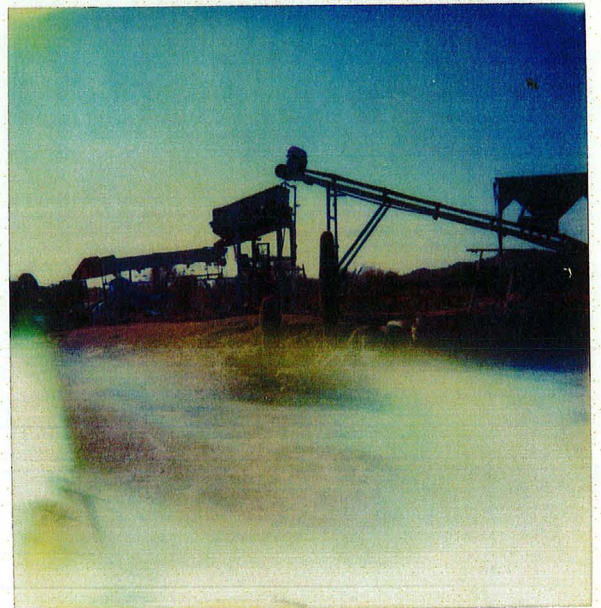
Weary Bones 12/18/85



Weary Bones 12/13/85



Weary Bones 12/13/85



Weary Bones 12/13/85

WEARY BONES

MARICOPA COUNTY

Weary Bones Mining Co.
6236 N. Black Canyon, #204
Phoenix, Arizona 85017

Gene Martin-President
Mike Jones
Jack Hermes
Dick Whitney
Dan Price