



CONTACT INFORMATION

Mining Records Curator
Arizona Geological Survey
1520 West Adams St.
Phoenix, AZ 85007
602-771-1601
<http://www.azgs.az.gov>
inquiries@azgs.az.gov

The following file is part of the

Arizona Department of Mines and Mineral Resources Mining Collection

ACCESS STATEMENT

These digitized collections are accessible for purposes of education and research. We have indicated what we know about copyright and rights of privacy, publicity, or trademark. Due to the nature of archival collections, we are not always able to identify this information. We are eager to hear from any rights owners, so that we may obtain accurate information. Upon request, we will remove material from public view while we address a rights issue.

CONSTRAINTS STATEMENT

The Arizona Geological Survey does not claim to control all rights for all materials in its collection. These rights include, but are not limited to: copyright, privacy rights, and cultural protection rights. The User hereby assumes all responsibility for obtaining any rights to use the material in excess of "fair use."

The Survey makes no intellectual property claims to the products created by individual authors in the manuscript collections, except when the author deeded those rights to the Survey or when those authors were employed by the State of Arizona and created intellectual products as a function of their official duties. The Survey does maintain property rights to the physical and digital representations of the works.

QUALITY STATEMENT

The Arizona Geological Survey is not responsible for the accuracy of the records, information, or opinions that may be contained in the files. The Survey collects, catalogs, and archives data on mineral properties regardless of its views of the veracity or accuracy of those data.

PRINTED: 09/06/2002

ARIZONA DEPARTMENT OF MINES AND MINERAL RESOURCES AZMILS DATA

PRIMARY NAME: WAMPOO

ALTERNATE NAMES:

GREENLEE COUNTY MILS NUMBER: 80

LOCATION: TOWNSHIP 6 S RANGE 32 E SECTION 15 QUARTER C
LATITUDE: N 32DEG 54MIN 34SEC LONGITUDE: W 109DEG 03MIN 21SEC
TOPO MAP NAME: YORK VALLEY - 15 MIN

CURRENT STATUS: UNKNOWN

COMMODITY:
UNKNOWN

BIBLIOGRAPHY:

POWERS, RUSSEL S., GEOLOGY OF THE SUMMIT MTS
AND VICINITY, GRANT CO. N.M. AND GREENLEE CO
AZ. ADMMR FILES 1976, PLATE 4
ADMMR WAMPOO FILE
USGS MAP I-1310-B

WAMPOO MINE

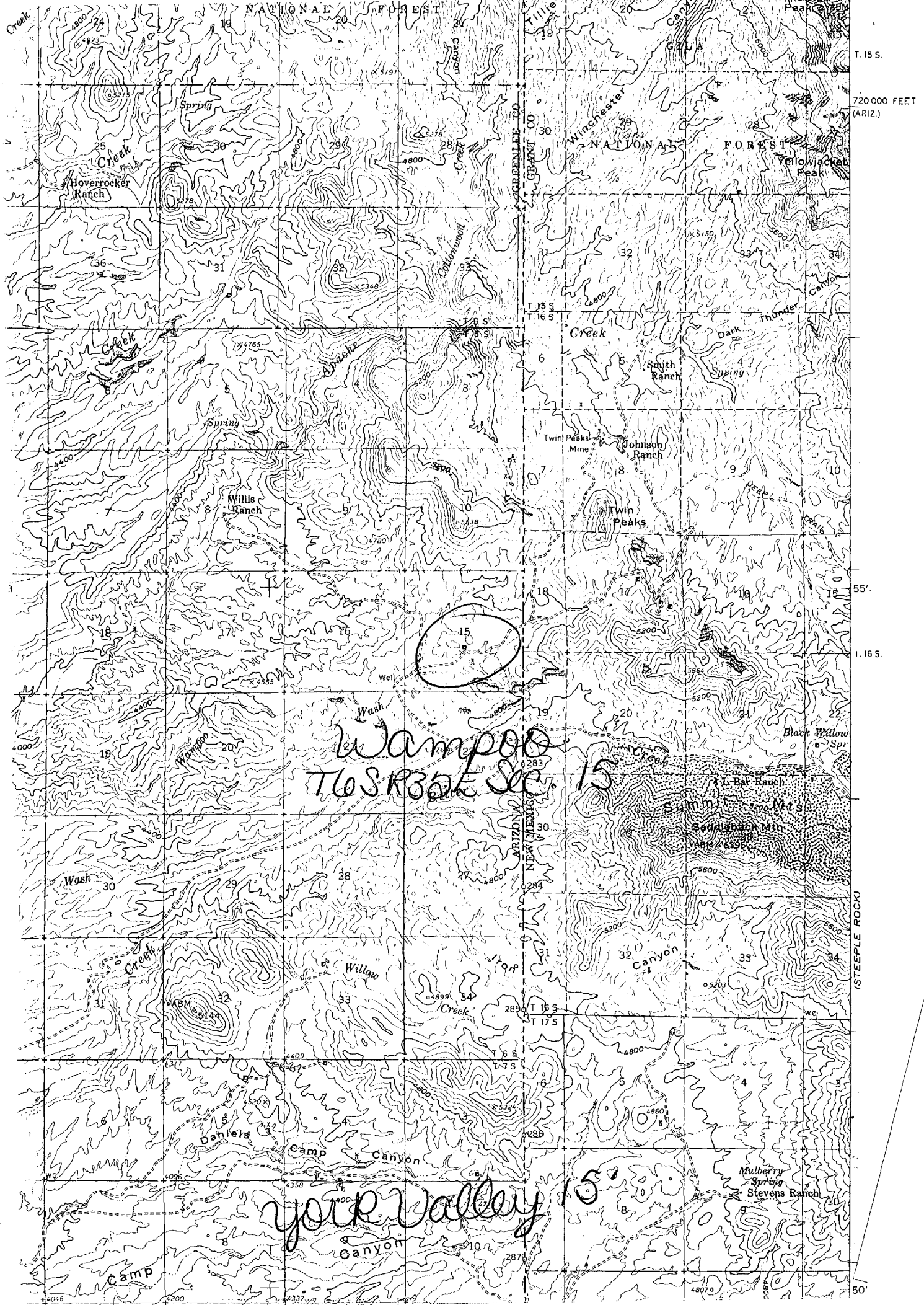
10/84

GREENLEE COUNTY
MAYFLOWER DISTRICT
T6S R32E Sec. 15

Greenlee MILS Index #80

See: Map I-1310-B p. 8; Mineral Deposit Map of the Silver City 1⁰ x 2⁰
Quad., NM & AZ

York Valley 15' Quad Map (included in file)



WAMPOO MINE

Greenlee County
Mayflower District

See: "Geology of the Summit Mountains and Vicinity, Grant County, New
Mexico, and Greenlee County, Arizona" GEOLOGY FILE

Master Thesis by Russell S. Powers

KAP WR 4/17/81: In the company of Dick Beard a visit was made to Wampoo #1
and #2. A separate report will be written.

ARIZONA DEPARTMENT OF MINERAL RESOURCES
Mineral Building, Fairgrounds
Phoenix, Arizona

1. Information from: ✓ Ben Billingsley
Address: Box 105 Duncan
2. Mine: Wampoo ~~###-###-###~~ 3. No. of Claims - Patented _____
Unpatented ?
4. Location: ~~###-###~~ 12 miles north of Duncan, 1 mile from NM State line.
5. Sec 15? Tp 6S Range 32E 6. Mining District (Mayflower) Twin Peaks.
7. Owner: ✓ Ben Billingsley
8. Address: Box 105 Duncan
9. Operating Co.: _____
10. Address: _____
11. President: _____ 12. Gen. Mgr.: _____
13. Principal Metals: ~~##~~, Ag., Cu., Pb 14. No. Employed: _____
15. Mill, Type & Capacity: _____
16. Present Operations: (a) Down (b) Assessment work (c) Exploration
(d) Production (e) Rate _____ tpd.
17. New Work Planned: Plans to do some development work. Amount and plans not definite.

18. Misc. Notes: _____

copy
b
it
a
Billingsley of Duncan is working at
Mine in the Twin Peaks dis-
trict in Pinal County
RAY, RT 4/23/69

Date: 4-2-69 _____
[Signature] _____
(Signature) (Field Engineer)