



CONTACT INFORMATION

Mining Records Curator
Arizona Geological Survey
1520 West Adams St.
Phoenix, AZ 85007
602-771-1601
<http://www.azgs.az.gov>
inquiries@azgs.az.gov

The following file is part of the

Arizona Department of Mines and Mineral Resources Mining Collection

ACCESS STATEMENT

These digitized collections are accessible for purposes of education and research. We have indicated what we know about copyright and rights of privacy, publicity, or trademark. Due to the nature of archival collections, we are not always able to identify this information. We are eager to hear from any rights owners, so that we may obtain accurate information. Upon request, we will remove material from public view while we address a rights issue.

CONSTRAINTS STATEMENT

The Arizona Geological Survey does not claim to control all rights for all materials in its collection. These rights include, but are not limited to: copyright, privacy rights, and cultural protection rights. The User hereby assumes all responsibility for obtaining any rights to use the material in excess of "fair use."

The Survey makes no intellectual property claims to the products created by individual authors in the manuscript collections, except when the author deeded those rights to the Survey or when those authors were employed by the State of Arizona and created intellectual products as a function of their official duties. The Survey does maintain property rights to the physical and digital representations of the works.

QUALITY STATEMENT

The Arizona Geological Survey is not responsible for the accuracy of the records, information, or opinions that may be contained in the files. The Survey collects, catalogs, and archives data on mineral properties regardless of its views of the veracity or accuracy of those data.

PRINTED: 09/06/2002

ARIZONA DEPARTMENT OF MINES AND MINERAL RESOURCES AZMILS DATA

PRIMARY NAME: VOLCANIC ASH

ALTERNATE NAMES:

LA PAZ COUNTY MILS NUMBER: 435

LOCATION: TOWNSHIP 7 N RANGE 17 W SECTION 14 QUARTER

LATITUDE: N 33DEG 56MIN 50SEC LONGITUDE: W 114DEG 00MIN 00SEC

TOPO MAP NAME: BOUSE - 15 MIN

CURRENT STATUS: UNKNOWN

COMMODITY:

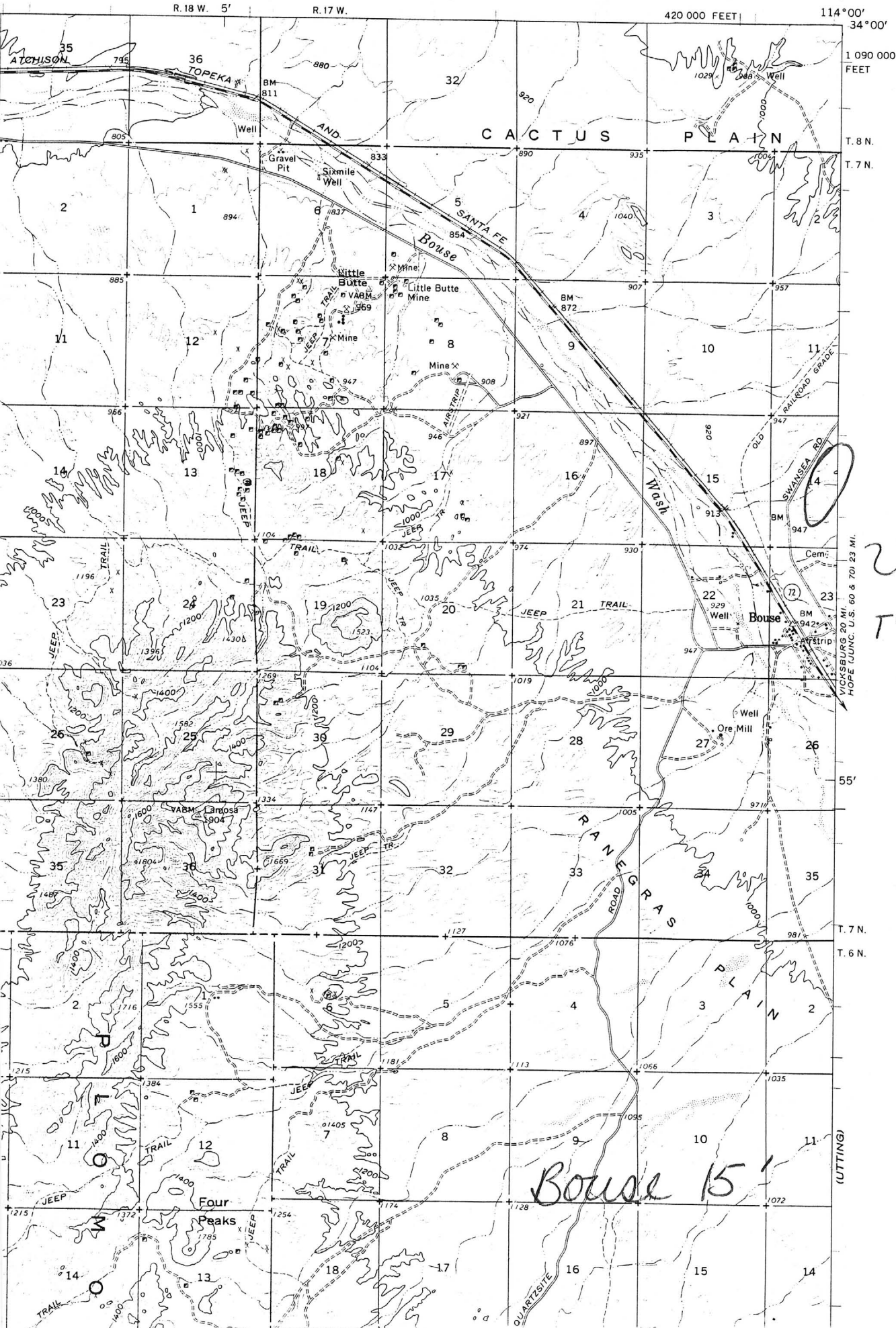
PUMICE VOLCANIC ASH

ABRASIVE VOLCANIC ASH

BIBLIOGRAPHY:

ADMMR VOLCANIC ASH FILE

BOUSE QUADRANGLE
ARIZON YUMA CO.
15 MINUTE SERIES (TOPOGRAPHIC)



*Volcanic
Ash
T7N R17W
Sec 14*

Bouse 15'

(UTTING)

~~NAME OF MINE:~~ VOLCANIC ASH

COUNTY: YUMA ~~W~~
DISTRICT: PLOMOSA
METALS: VOLCANIC ASH

OPERATOR AND ADDRESS:

MINE STATUS

DATE:

5/3/44

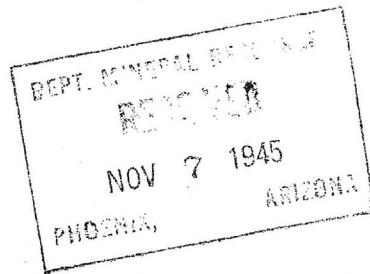
Owner: J.C.Townsend
Bouse, Arizona

DATE:

5/3/44

Closed--Report made by
Holt





Glendale 3, Calif.
331 West Wilson Ave.,
Nov. 4th-45

Federal Mining Bureau
Phoenix, Arizona.

Dear Sir:

I understand you have both pumice stone and a light weight scoria in your state.

I am interested in both and would appreciate information as to where they are located, who owns them, are they in production now and any other information which you can give me.

Have you any that is not taken up which is on Government land? Is it accessible with a truck?

Do you know of any that is on privately owned property?

I am enclosing a self addressed envelope and will appreciate an early reply.

Sincerely yours,

Gertrude Roberts
Gertrude Roberts

please ask

November 9, 1945

Mrs. Gertrude Roberts
331 West Wilson Avenue
Glendale 3, California

Dear Mrs. Roberts:

The only property we have listed along the line of your inquiry is, a large and pure deposit of "pumicite" near Bouse, Arizona, owned by Mr. J. C. Townsend of Bouse.

We have a field engineer's report on this property and take pleasure in enclosing a copy herewith.

I have personally seen this property and can vouch for it if it fulfills the qualifications you need.

If it does not, please advise us in further detail and we will try further.

Yours very truly,

Chas. H. Dunning
Director

CHD:LP
Enc.

4/28/44

To: J. S. Campbell
From: Elgin B. Hoet.
Subject: Volcanic Ash.

Kindly mail a copy
of this report to:

J. C. Townsend,
Pauze, Arizona.

Your memo. of 4/25/44
about the alumina-clay.
On the same date, I wrote
Mr. Roy Barnes fully
about this matter. c.c. to
you.

Elgin.

May 3, 1944

Mr. J. G. Townsend
Bouse, Arizona

Dear Mr. Townsend:

At the request of Mr. Elgin B. Holt
we are sending you a copy of his report on
the Volcanic Ash.

Yours very truly,

J. S. Coupal, Director

lp
Enc.

DEPARTMENT OF MINERAL RESOURCES
STATE OF ARIZONA
FIELD ENGINEERS REPORT

DEPT. MINERAL RESOURCES
RECEIVED
MAY 3 1944
PHOENIX, ARIZONA

Mine VOLCANIC ASH Date April 28, 1944
District Plomosa, Yuma County, Arizona. Engineer Elgin B. Holt
Subject:

R E P O R T

OWNERS: J. C. Townsend, et al, Bouse, Arizona.

MATERIAL: Volcanic ash of excellent quality, occurring as a deposit of soft chalky rock, or of very fine-grained material containing no dirt, sand or gravel, or other deleterious material.

LOCATION - AREA:

This deposit is located one mile northeast of Bouse a station on the Santa Fe Railroad. There is a good level dirt road leading from property to the loading ramp at Bouse. Material could be mined by power shovel, trucked to Bouse and loaded on gondola cars at a total cost not exceeding \$1.00 per ton. Area: 160 acres covered by placer locations.

EXAMINATION:

I have examined this deposit a number of times during 1942, 1943 and the present year. While there are several outcrops of "ash" within the confines of property, the main deposit contains about 50,000 tons of clean volcanic ash material occurring in a low hill in the form of a blanket strata, which seems to be from 15 to 20 feet in thickness. The deposit in the center is covered by about 15 feet of overburden; but around the edges of the hill the "ash" is exposed at the surface. At the foot of the hill, on the southwest side, a prospect hole has been sunk in clean material to a depth of 12 feet; but here the bottom of the strata has not been reached. Other work consists of one tunnel on the east side about 75 feet in length; said tunnel being driven underneath the deposit, or strata; also several open cuts on the west side of the hill; all of these workings

exposing large amounts of the volcanic ash material.

USES AND MARKETS:

Volcanic ash, of good quality, is used for making mechanic's soap and "Dutch Cleanser". It is also used as an abrasive. Several soap companies, in Los Angeles, use this material mainly in making mechanic's soap; but these companies get most, or all, of their "ash" from deposits near Los Angeles, at a low rail freight cost, and for that reason owners of this deposit todate have been unable to find a market for the material in question.

ANALYSIS:

Mr. E. R. Bardwell, 4215 Colbath Avenue, Sherman Oaks, California, examined the property during July, 1943. He had an analysis made of the material on August 5, 1943, by Smith-Emery Company; results being as follows:

Silica (SiO2) -----	67.52%
Iron Oxide (Fe2O3) -----	0.12%
Aluminum Oxide (Al2O3) -----	14.38%
Calcium Oxide (CaO) -----	0.36%
Magnesium Oxide (MgO) -----	4.63%
Sodium Oxide (Na2O) -----	3.20%
Potassium Oxide (K2O) -----	0.36%
Loss on Ignition -----	9.34%
	<hr/> 99.91%

Elgin B. Holt
Elgin B. Holt,
Field Engineer.

Volcanic ash

November 9, 1945

Mrs. Gertrude Roberts
331 West Wilson Avenue
Glendale 3, California

Dear Mrs. Roberts:

The only property we have listed along the line of your inquiry is a large and pure deposit of "pumicite" near Bouse, Arizona, owned by Mr. J. C. Townsend of Bouse.

We have a field engineer's report on this property and take pleasure in enclosing a copy herewith.

I have personally seen this property and can vouch for it if it fulfills the qualifications you need.

If it does not, please advise us in further detail and we will try further.

Yours very truly,

Chas. H. Dunning
Director

CHD:LP
Enc.

May 3, 1944

Mr. J. C. Townsend
Bouse, Arizona

Dear Mr. Townsend:

At the request of Mr. Elgin B. Holt
we are sending you a copy of his report on
the Volcanic Ash.

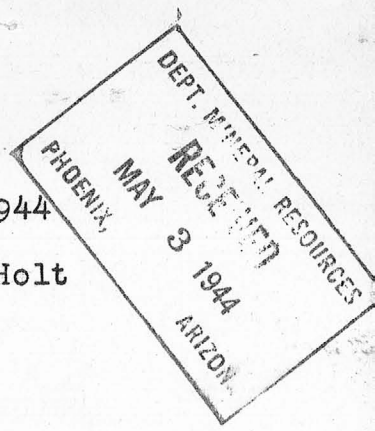
Yours very truly,

J. S. Coupal, Director

lp
Enc.

DEPARTMENT OF MINERAL RESOURCES
STATE OF ARIZONA
FIELD ENGINEERS REPORT

Mine VOLCANIC ASH Date April 28, 1944
District Plomosa, Yuma County, Arizona. Engineer Elgin B. Holt
Subject:



R E P O R T

OWNERS: J. C. Townsend, et al, Bouse, Arizona.

MATERIAL: Volcanic ash of excellent quality, occurring as a deposit of soft chalky rock, or of very fine-grained material containing no dirt, sand or gravel, or other deleterious material.

LOCATION - AREA:

This deposit is located one mile northeast of Bouse a station on the Santa Fe Railroad. There is a good level dirt road leading from property to the loading ramp at Bouse. Material could be mined by power shovel, trucked to Bouse and loaded on gondola cars at a total cost not exceeding \$1.00 per ton. Area: 160 acres covered by placer locations.

EXAMINATION:

I have examined this deposit a number of times during 1942, 1943 and the present year. While there are several outcrops of "ash" within the confines of property, the main deposit contains about 50,000 tons of clean volcanic ash material occurring in a low hill in the form of a blanket strata, which seems to be from 15 to 20 feet in thickness. The deposit in the center is covered by about 15 feet of overburden; but around the edges of the hill the "ash" is exposed at the surface. At the foot of the hill, on the southwest side, a prospect hole has been sunk in clean material to a depth of 12 feet; but here the bottom of the strata has not been reached. Other work consists of one tunnel on the east side about 75 feet in length; said tunnel being driven underneath the deposit, or strata; also several open cuts on the west side of the hill; all of these workings

exposing large amounts of the volcanic ash material.

USES AND MARKETS:

Volcanic ash, of good quality, is used for making mechanic's soap and "Dutch Cleanser". It is also used as an abrasive. Several soap companies, in Los Angeles, use this material mainly in making mechanic's soap; but these companies get most, or all, of their "ash" from deposits near Los Angeles, at a low rail freight cost, and for that reason owners of this deposit todate have been unable to find a market for the material in question.

ANALYSIS:

Mr. E. R. Bardwell, 4215 Colbath Avenue, Sherman Oaks, California, examined the property during July, 1943. He had an analysis made of the material on August 5, 1943, by Smith-Emery Company; results being as follows:

Silica (SiO2) -----	67.52%
Iron Oxide (Fe2O3) -----	0.12%
Aluminum Oxide (Al2O3) -----	14.38%
Calcium Oxide (CaO) -----	0.36%
Magnesium Oxide (MgO) -----	4.63%
Sodium Oxide (Na2O) -----	3.20%
Potassium Oxide (K2O) -----	0.36%
Loss on Ignition -----	9.34%
	<hr/>
	99.91%

Elgin B. Holt
Elgin B. Holt,
Field Engineer.