



CONTACT INFORMATION

Mining Records Curator
Arizona Geological Survey
1520 West Adams St.
Phoenix, AZ 85007
602-771-1601
<http://www.azgs.az.gov>
inquiries@azgs.az.gov

The following file is part of the

Arizona Department of Mines and Mineral Resources Mining Collection

ACCESS STATEMENT

These digitized collections are accessible for purposes of education and research. We have indicated what we know about copyright and rights of privacy, publicity, or trademark. Due to the nature of archival collections, we are not always able to identify this information. We are eager to hear from any rights owners, so that we may obtain accurate information. Upon request, we will remove material from public view while we address a rights issue.

CONSTRAINTS STATEMENT

The Arizona Geological Survey does not claim to control all rights for all materials in its collection. These rights include, but are not limited to: copyright, privacy rights, and cultural protection rights. The User hereby assumes all responsibility for obtaining any rights to use the material in excess of "fair use."

The Survey makes no intellectual property claims to the products created by individual authors in the manuscript collections, except when the author deeded those rights to the Survey or when those authors were employed by the State of Arizona and created intellectual products as a function of their official duties. The Survey does maintain property rights to the physical and digital representations of the works.

QUALITY STATEMENT

The Arizona Geological Survey is not responsible for the accuracy of the records, information, or opinions that may be contained in the files. The Survey collects, catalogs, and archives data on mineral properties regardless of its views of the veracity or accuracy of those data.

PRINTED: 09/05/2002

ARIZONA DEPARTMENT OF MINES AND MINERAL RESOURCES AZMILS DATA

PRIMARY NAME: VICTORY

ALTERNATE NAMES:

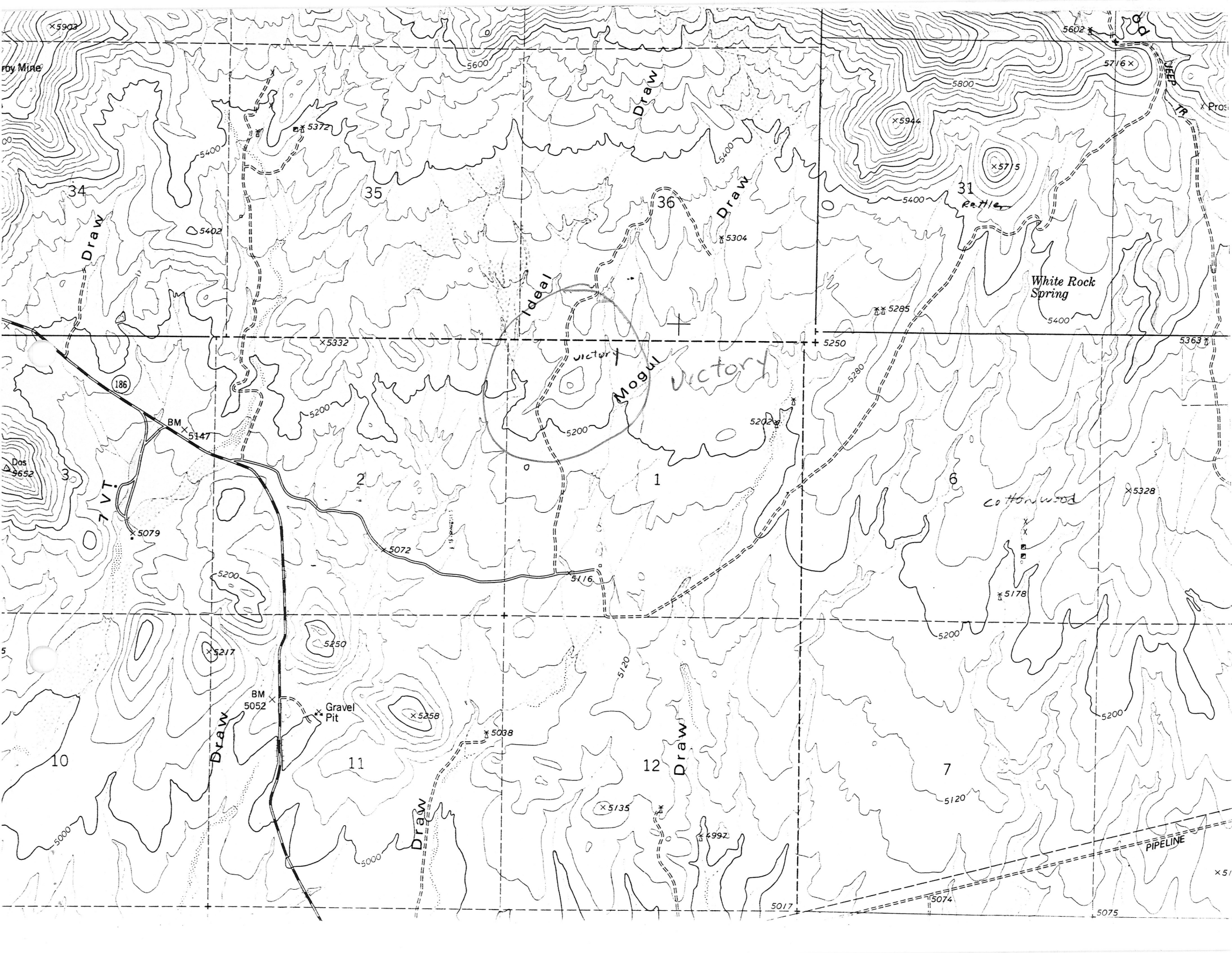
COCHISE COUNTY MILS NUMBER: 836

LOCATION: TOWNSHIP 15 S RANGE 27 E SECTION 1 QUARTER NW
LATITUDE: N 32DEG 09MIN 50SEC LONGITUDE: W 109DEG 32MIN 40SEC
TOPO MAP NAME: DOS CABEZAS - 7.5 MIN

CURRENT STATUS: RAW PROSPECT

COMMODITY:
UNKNOWN

BIBLIOGRAPHY:
ADMMR VICTORY FILE
TWO PATENTED CLAIMS



x5902

roy Mine

5600

5602

5716 x

5800

x5944

x5715

34

35

36

31

Draw

Draw

Draw

White Rock Spring

x5716

x5332

5250

5363

186

BM x5147

Victory

Mogul

Victory

5200

5202

2

1

6

Cottonwood

x5328

x5079

x5072

5116

x5178

5

5200

5250

5200

10

BM x5052

Gravel Pit

x5258

12

Draw

7

5200

5000

5000

Draw

x5135

x4992

PIPELINE

5017

x5074

5075

VICTORY MINING CLAIMS

COCHISE

Jim Kennedy, 622-5624, now owns the Victory claims near Dos Cabezas; explained the status as the surface rights are patented separately. Two claims are patented and formerly belonged to Mrs. Eleanor Goodwin of the Ansonia Hotel, Los Angeles.
GWI WR 1/3/75

1930
THE VICTORY MINING CLAIM12-22-65: Owner
Mrs. E. W. Godwin,
2205 W. 6th Street
Los Angeles 57
Phone Dunkirk 8-7066

LOCATION

These two claims (34 Acres) are situated in the Dos Cabezos Mining District about 5 miles in a north-easterly direction from the town of Dos Cabezos, Arizona and about $2\frac{1}{2}$ miles east of the Leroy Mine. This Mine is contiguous to the great gold belt and is strictly a high grade gold, silver, lead and copper mine.

FORMATION

The Victory Group have all the general characteristics, formations, ect. as that of the Leroy Mine. The country formation being porphyritic granite cleaved by quartz veins and diabase dikes, constituting real fissures. This group possesses a system of fissure veins paralleled by and intersperced by two diabase dikes and one quartzite dike between the two center veins. This quartzite dike is about 75 ft. thick and is heavily mineralized. There are also two rhyolite dikes paralleling, connected with and belonging to the vein and dike system.

MINERALIZATION

I have a ten foot shaft near on the contact of one of the rhyolite dikes carrying a diabase gangue. The ore ran \$2.75 gold and 10 ounces silver, showing a considerable copper and lead. Of all the likely prospect on the property, this is decidedly my favorite. The gold being coarse and the quartz being always bluish gray, indicating an abundance of high grade ore at depth. Again because the location is a most desirable shaft site for convenient working and accessibility. All veins are opened by 10 ft. shafts at various points and in every instance revealingly a true fissure vein ranging in width from 8 inches to 3 ft., exceedingly well mineralized, carrying good values in gold, silver, lead and copper. Every shaft shows a diabase gangue or foot wall. On the two distinct center veins there are 3 forty foot shafts that show considerable ore all the way from the surface. At each shaft there is considerable oxide ore indicating what seems to be one continuous ore schute. I recently put down a ten foot shaft on the extreme easterly vein which is about 2 feet wide. This vein inclines on a 45 degree toward the quartzite dike cropping about 100 ft. from the dike. The foot wall is diabase as usual and the hanging wall is porphyritic granite. The entire vein is ore--gold, silver, lead, and copper. Samples from an old working (an old prospect hole 10 feet deep) gave assay of \$21, gold and silver while a sample from an old ore pile of about 5 tons gave results of \$45 gold and silver. I consider this an unusual showing for the surface--a splendid gold, silver, lead and copper ore in the very grass roots and the ore schute showing to be at least 300 feet in length. The whole property is easy of access, so much so that an automobile can be driven to the group and mill site.

REMARKS

In all my experience in the mining field, I have never seen a prospect so well deserving of development or so conveniently situated, being right out in undulating hills with an automobile road to within one-half mile and a shipping point only four miles away, besides every correct formation and vein matter, together with four of the most important metals that constitute a real mine.

(Signed)

O. H. Bean

Heck

COPY OF ASSAY CERTIFICATES *

GOLD	SILVER	TOTAL
\$24.44	\$20.00	\$44.44
1.60	6.12	7.72
8.80	14.36	22.16
15.20	5.60	20.80
15.00	24.60	39.90
52.30	10.16	62.96

* These assays are at \$20.00 gold

The following is additional information I recently received.

"You have north south quartz veins showing lead, silver and gold cutting through all of this material. It all shows some radioactivity, highest along the veins. To the lower limits of the gold, silver, lead values the U₃O₈ will come in. As to the exact depth this will take place, no one can say. I would estimate 800 feet below the outcrop.

"It is the same condition that prevailed in African small veins of lead, silver and gold. When the veins they had been mining went out, the U₃O₈ came in the form of pitchblend. Now, of course, they were not even looking for radioactive elements, and they were of no particular value at that time.

"In regard to your claims, I will say that they are located about the center of a highly radioactive zone, and in my opinion there will be several big U₃O₈ mines opened up within 5 years in this locality and many smaller ones. We have not really started to develop for primary and deep secondary U₃O₈ yet.

40 FT.
STRAIGHT
SHAFT
□

40 FT.
w/ shaft
□

Knoll

ONE OF THE
HOT SPOTS

SHALLOW
CAVED IN SHAFT

about 800 yds.

DEBORE
RANCH
HOUSE

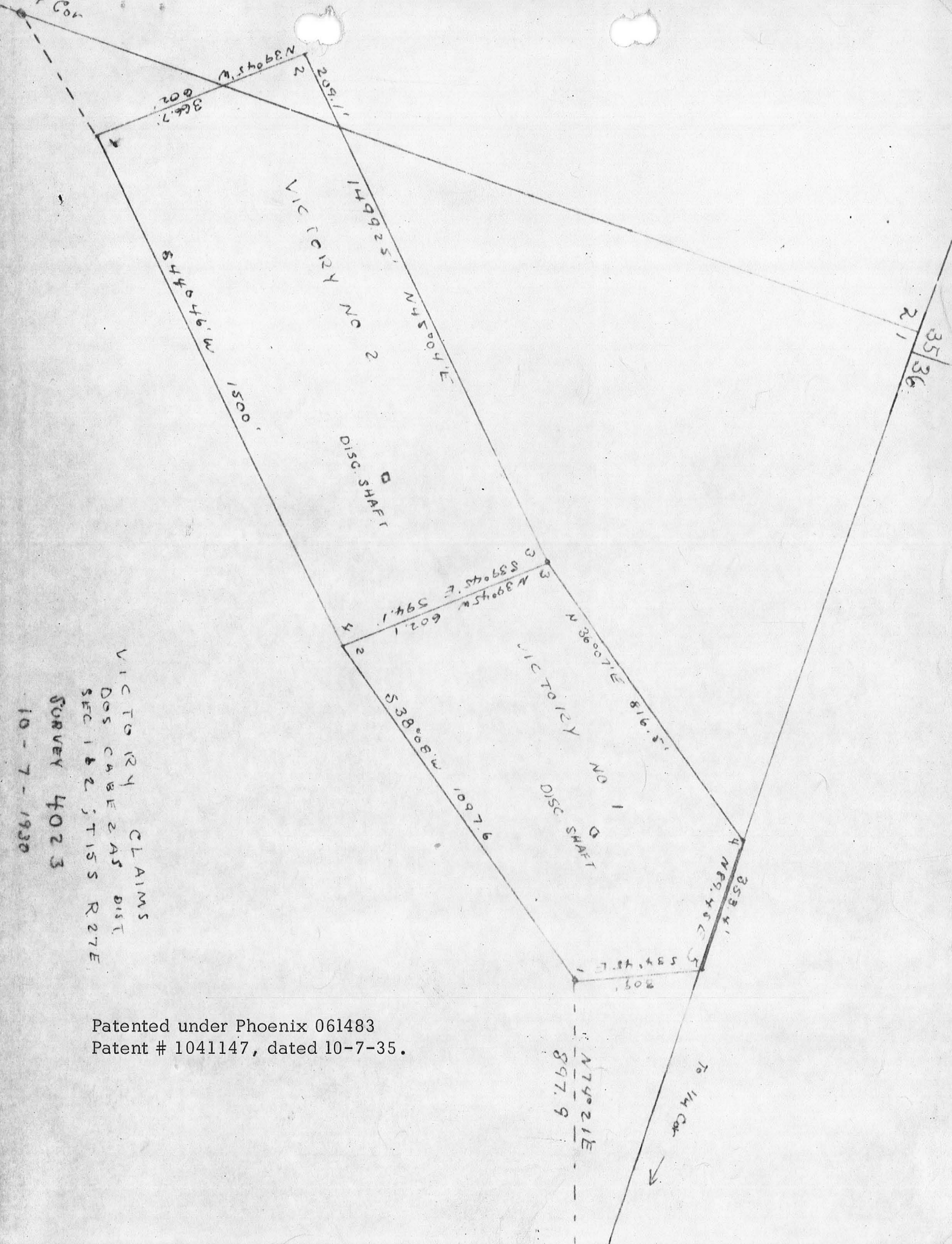
500 yds

approx 1 mile

Town of
Dog Cabezas

approx
2 1/2 mi

←
TO
Wilcox
Arizona



35/36
21

VICTORY CLAIMS

DOS CABE 2AS DIST
SEC 1 & 2 STISS R 27E

SURVEY 4023

10-7-1930

Patented under Phoenix 061483
Patent # 1041147, dated 10-7-35.