



CONTACT INFORMATION

Mining Records Curator
Arizona Geological Survey
1520 West Adams St.
Phoenix, AZ 85007
602-771-1601
<http://www.azgs.az.gov>
inquiries@azgs.az.gov

The following file is part of the

Arizona Department of Mines and Mineral Resources Mining Collection

ACCESS STATEMENT

These digitized collections are accessible for purposes of education and research. We have indicated what we know about copyright and rights of privacy, publicity, or trademark. Due to the nature of archival collections, we are not always able to identify this information. We are eager to hear from any rights owners, so that we may obtain accurate information. Upon request, we will remove material from public view while we address a rights issue.

CONSTRAINTS STATEMENT

The Arizona Geological Survey does not claim to control all rights for all materials in its collection. These rights include, but are not limited to: copyright, privacy rights, and cultural protection rights. The User hereby assumes all responsibility for obtaining any rights to use the material in excess of "fair use."

The Survey makes no intellectual property claims to the products created by individual authors in the manuscript collections, except when the author deeded those rights to the Survey or when those authors were employed by the State of Arizona and created intellectual products as a function of their official duties. The Survey does maintain property rights to the physical and digital representations of the works.

QUALITY STATEMENT

The Arizona Geological Survey is not responsible for the accuracy of the records, information, or opinions that may be contained in the files. The Survey collects, catalogs, and archives data on mineral properties regardless of its views of the veracity or accuracy of those data.

12/17/90

ARIZONA DEPARTMENT OF MINES AND MINERAL RESOURCES FILE DATA

PRIMARY NAME: VICTOR COPPER

ALTERNATE NAMES:

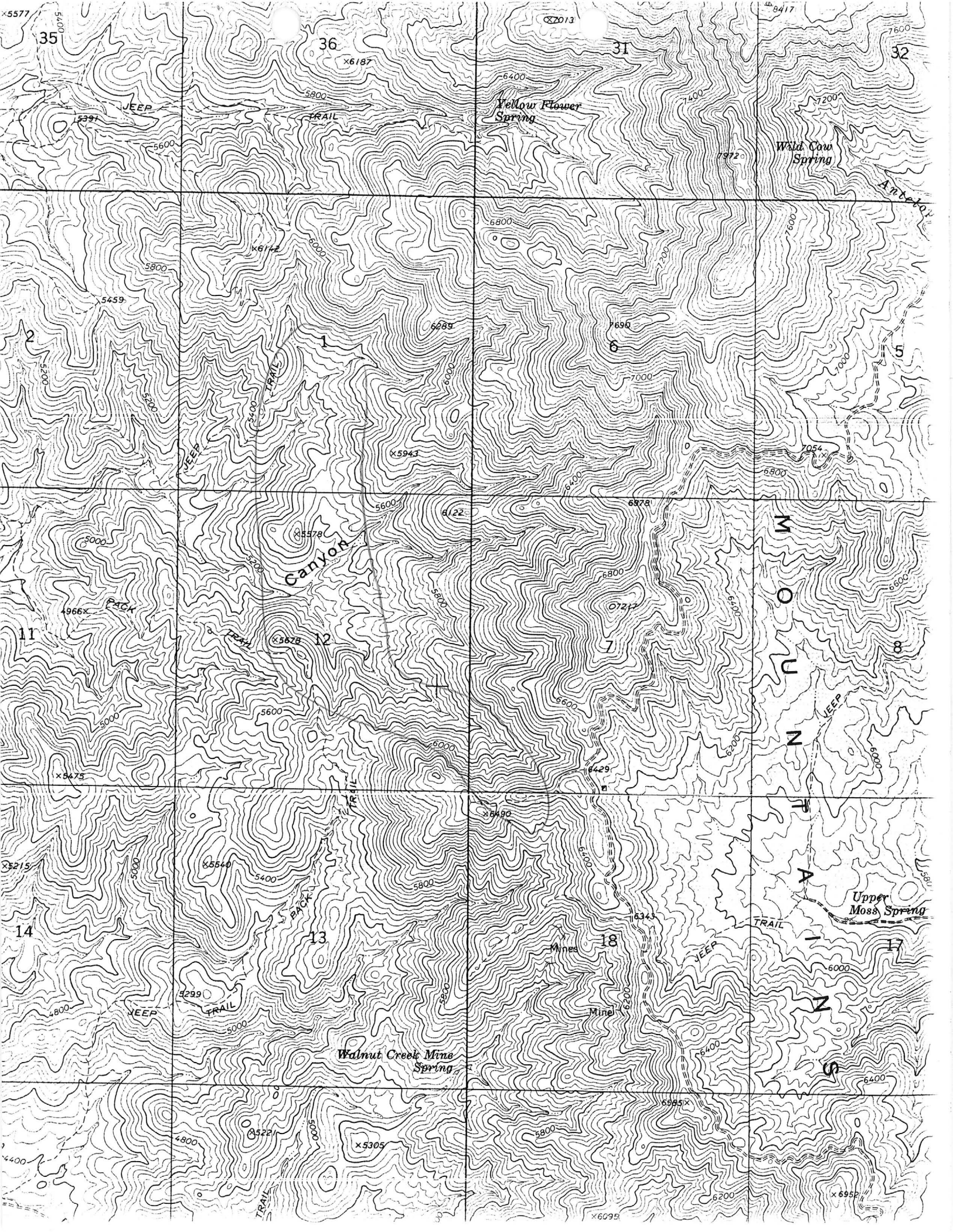
MOHAVE COUNTY MILS NUMBER: 794

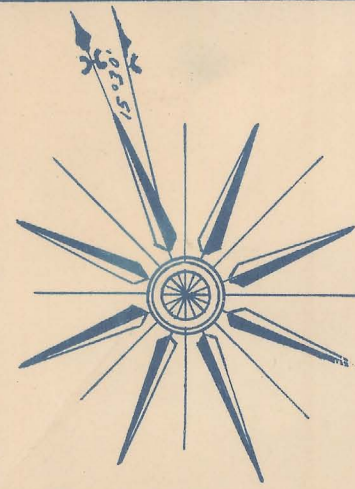
LOCATION: TOWNSHIP 19 N RANGE 15 W SECTION 7 QUARTER SW
LATITUDE: N 35DEG 02MIN 23SEC LONGITUDE: W 113DEG 54MIN 51SEC
TOPO MAP NAME: HUALAPAI PEAK - 7.5 MIN

CURRENT STATUS: UNKNOWN

COMMODITY:
COPPER

BIBLIOGRAPHY:
ADMMR VICTOR COPPER FILE





MAP

SHOWING PROPERTY

OF

VICTOR COPPER CO

IN

MAYNARD MINING DISTRICT

WILAPAI MTS. MOHAVE CO. ARIZ.

GENERAL OFFICES KINGMAN ARIZ.

BRANCH OFFICES JEROME ARIZ.

AMENDED SURVEY BY S.E. GUTHREY U.S. MINERAL SURVEYOR

Scale: - 300 feet = One Inch

31 CLAIMS

580 ACRES

