



CONTACT INFORMATION

Mining Records Curator
Arizona Geological Survey
1520 West Adams St.
Phoenix, AZ 85007
602-771-1601
<http://www.azgs.az.gov>
inquiries@azgs.az.gov

The following file is part of the

Arizona Department of Mines and Mineral Resources Mining Collection

ACCESS STATEMENT

These digitized collections are accessible for purposes of education and research. We have indicated what we know about copyright and rights of privacy, publicity, or trademark. Due to the nature of archival collections, we are not always able to identify this information. We are eager to hear from any rights owners, so that we may obtain accurate information. Upon request, we will remove material from public view while we address a rights issue.

CONSTRAINTS STATEMENT

The Arizona Geological Survey does not claim to control all rights for all materials in its collection. These rights include, but are not limited to: copyright, privacy rights, and cultural protection rights. The User hereby assumes all responsibility for obtaining any rights to use the material in excess of "fair use."

The Survey makes no intellectual property claims to the products created by individual authors in the manuscript collections, except when the author deeded those rights to the Survey or when those authors were employed by the State of Arizona and created intellectual products as a function of their official duties. The Survey does maintain property rights to the physical and digital representations of the works.

QUALITY STATEMENT

The Arizona Geological Survey is not responsible for the accuracy of the records, information, or opinions that may be contained in the files. The Survey collects, catalogs, and archives data on mineral properties regardless of its views of the veracity or accuracy of those data.

05/07/86

ARIZONA DEPARTMENT OF MINES AND MINERAL RESOURCES FILE DATA

PRIMARY NAME: VERMICULITE

ALTERNATE NAMES:

SOLOMON

MARICOPA COUNTY MILS NUMBER: 9

LOCATION: TOWNSHIP 1 N RANGE 3 W SECTION 4 QTR. NE
LATITUDE: N 33DEG 27MIN 51SEC LONGITUDE: W 112DEG 33MIN 25SEC

TOPO MAP NAME: VALENCIA - 7.5 MIN

CURRENT STATUS: PAST PRODUCER

COMMODITY:

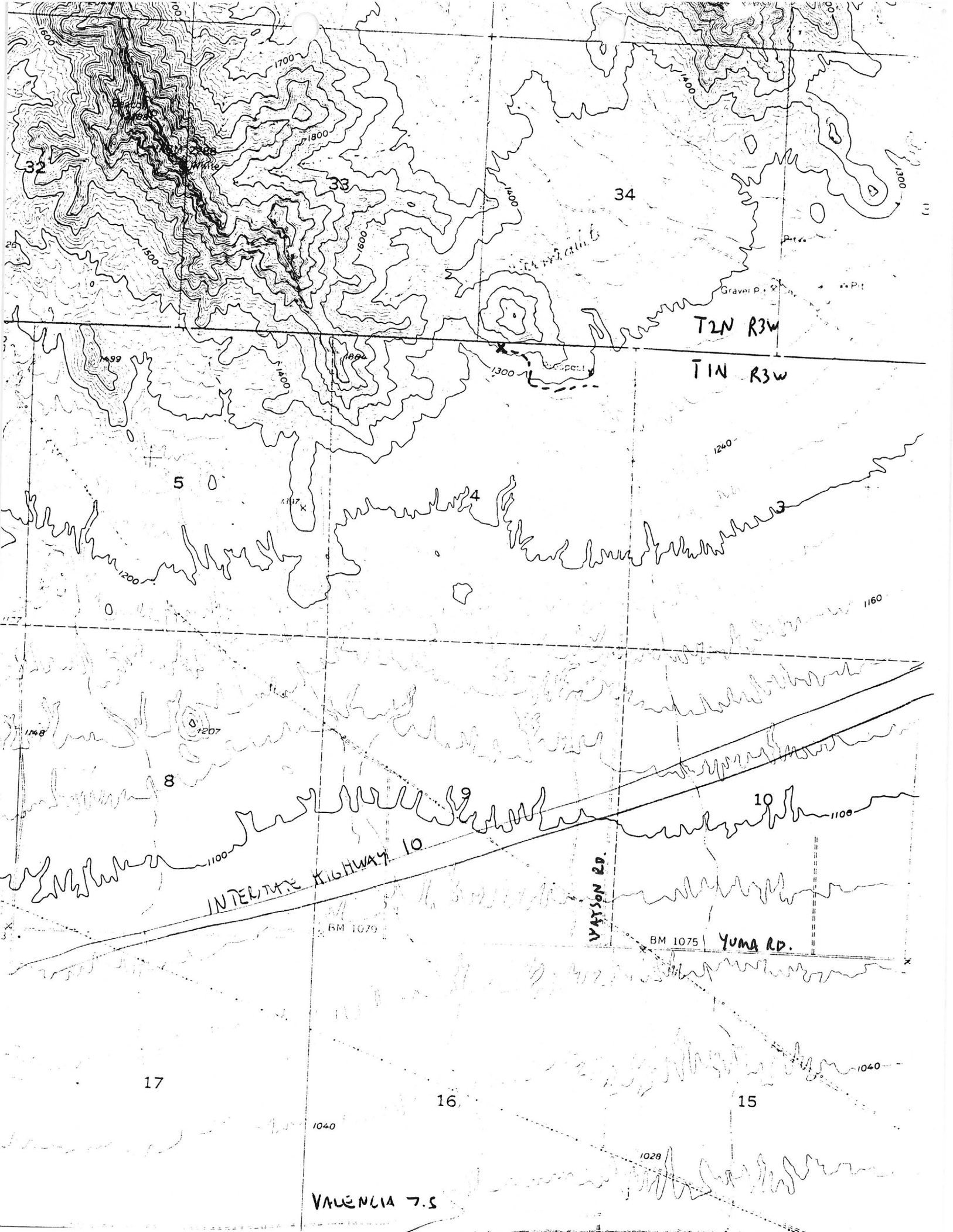
VERMICULITE - PRIMARY

MICA - COPRODUCT

BIBLIOGRAPHY:

USGS VALENCIA QUAD

ADMMR VERMICULITE FILE



32

33

34

5

4

3

8

9

10

17

16

15

VALENCIA 7.5

T2N R3W

T1N R3W

INTERSTATE HIGHWAY 10

VALLEY RD.

YUMA RD.

BM 1079

BM 1075

1040

1040

1028

1240

1160

1100

1499

1400

1800

1300

1117 X

Gravel P.

Pit

Gravel P.

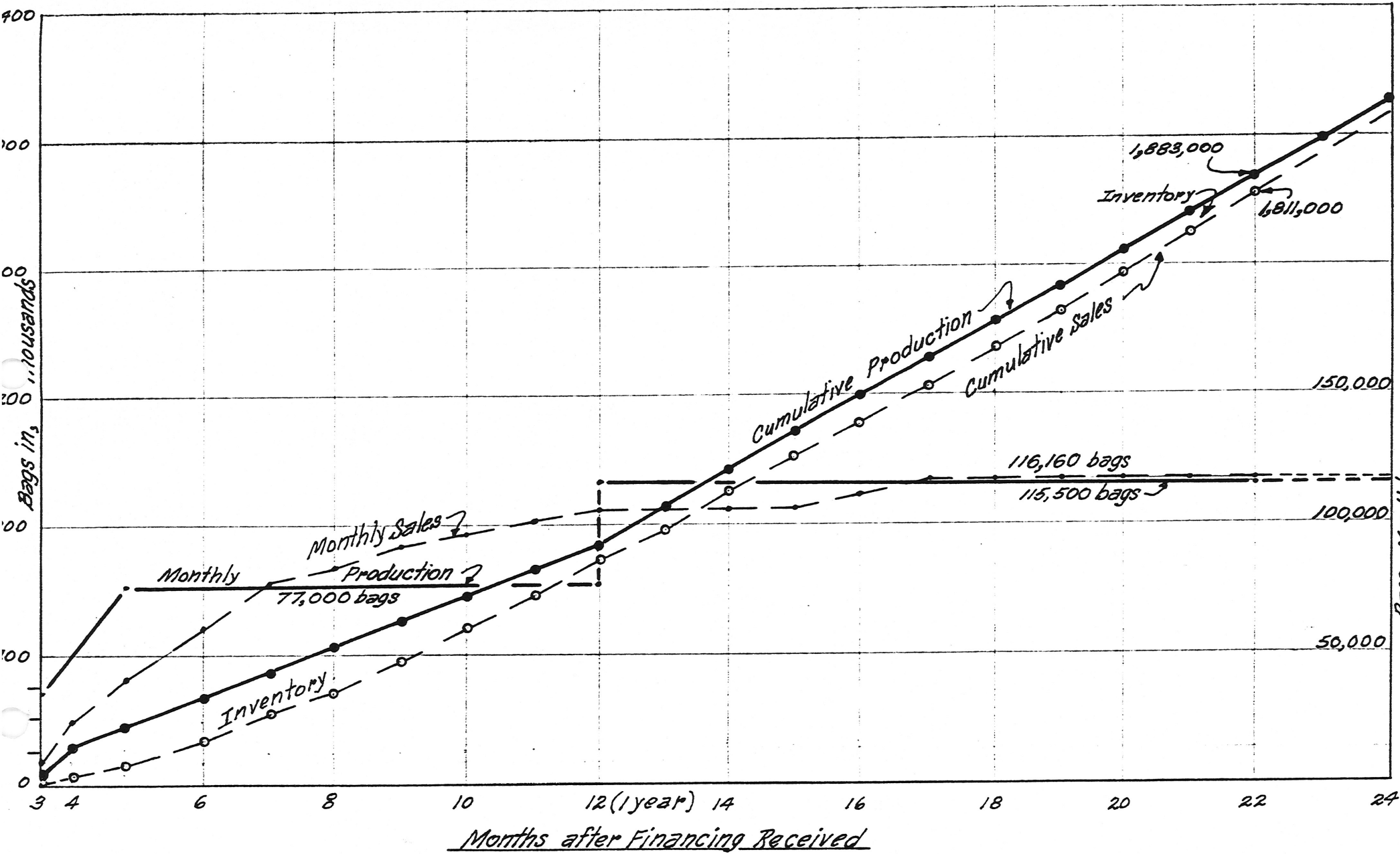
Pit

26

11

1177

3



20 Month Cumulative-Monthly Production-Sales

After L. Frechette
 Dec, 1970 - R.E. Mieritz

VERMICULITE MINE

MARICOPA COUNTY

KAP WR 12/16/77: Discussed vermiculite with Bob Languth. He has some sort of an agreement with the owner of the Vermiculite Mine, Maricopa County (Harold Crevess?). He reported that some small samples have been expanded and the material tested Grade 2 and 3 and had an 8:1 expansion ratio. He further reported that United Nuclear had some interest in possible sources of vermiculite.

Mine Inspector's Office 6/2/78: Mr. Harold V. Cravasse, 5323 E. Mockingbird Lane, Paradise Valley, Az 85253, is the sole owner of the Triple Nickle Mining Company. Office is located near the Buckeye Mica Co. He mines and sells vermiculite to wholesalers. Mine is located 6 miles north of Buckeye at the edge of the White Tank Mtn. Address for Triple Nickel is P O Box 368, Buckeye, Az. 85326.

KAP WR 11/30/84: Traveled to a vermiculite occurrence at the southern end of the White Tanks Mountains in the NW $\frac{1}{4}$, NE $\frac{1}{4}$ Sec 4, T1N R3W or possibly in the very southwest corner of Sec 34, T2N R3W. Samples were obtained for further identification and evaluation. A separate report has been prepared and a copy of a portion of the Valencia Arizona 7.5 topo map showing the location of the occurrence has been made for the Vermiculite Mine (f) Maricopa County. The occurrence is Maricopa MILS #9.

KAP WR 12/14/84: Samples of vermiculite from the Vermiculite Mine (f) Maricopa Co. were tested at Therm-o-Rock Perlite Popping Plant (f) for expansion characteristics. The material easily expanded under heat from a torch. A larger sample will be obtained to make a screen analysis and pilot expansion test.

NJN WR 1/11/85: With field engineer Ken Phillips to collect bulk samples of vermiculite at the Vermiculite Mine (f) Maricopa County. About 3000 lbs. were collected from a north-south trench dug across the mines 2 benches. Additional time was spent crushing, sorting, and screening the samples at the department.

VERMICULITE MINE

MARICOPA COUNTY

KAP WR 1/11/85: Cut three bulk samples across the benches at the Vermiculite Mine (file) Maricopa County. Approximately 50 linear feet of trench ± 4 " deep and 12" wide yielded about 3000 pounds of bulk samples. Details of samples and subsequent tests are the subject of separate reports and comments. The samples were crushed and screened at the Department office.

KAP WR 1/18/85: Discussed the prepared vermiculite samples with Ron Dobkin at Therm-O-Rock. With changes in their processing system they may be able to use material from the Vermiculite Mine (file) Maricopa County.

njn wr 2/1/85: With Ken Phillips, went to the Chandler Perlite Popping Plant (f) where we exfoliated approximately 50 lbs. of the vermiculite sample from the Arizona Vermiculite Mine (f) Maricopa County. The sample was analyzed for size fractions and specific density, and compared to Therm-O-Rocks regular product. A table with the results has been placed in the mine file.

KAP WR 3/8/85: Started to test bulk density and screen size on a vermiculite bulk sample from the Vermiculite Mine (file) Maricopa County. The sample was split from a 1,000 lb test run through Therm-O-Rock's expanding facility. Evaluation of the sample was not completed because the expanded material appeared to have been processed at too high a temperature thus creating excessive fines. It is hoped a second 1,000 lb sample will be run by Therm-O-Rock.

KAP WR 3/21/86: Jim Kahil reported that Mr. John Hankins, 6261 E. Gelding, Scottsdale, Arizona 85260, phone 860-2029 took him to the Vermiculite Mine (file), Maricopa County in the south end of the White Tank Mountains. He felt the deposit contained an average of 35% vermiculite but was too small for his company's current interest. He did feel a small local operator "might" be able to produce for local needs. He reported that Hankins claims to have a lease from the owners of the claims.

VERMICULITE MINE

WHITE TANK MTNS.
N. of Buckeye

Louis Frechette of Frechette Industries, Inc., 1625 W. Osborn Rd., Phoenix, have taken bond & lease on Solomon Vermiculite mine. Mrs. Dwight Solomon is to receive \$100/week and 10 cents per bag. They are building a plant at 59th^{Ave} and Van Buren. Richard Mieritz is consulting engineer. According to Mr. Frechette, they have a good market and expect it to expand.

9-14-70 - FTJ - Weekly Report

Floyd Everett, USBM liaison officer called to ask about a Mr. Frechette, who had phoned him and said he was producing 160t/day of vermiculite from the Solomon property north of Buckeye. In processing the vermiculite he said about 20% was rejected. In the reject he had recently discovered Pt. Dick Mieritz who is retained by Frechette Industries as consultant, said that no mining or exploration of the deposit was presently being pursued and that Frechette was trying to raise capital for an operation.

GW WR 12/19/70

Went to Solomon's vermiculite deposit about 5 miles north of Buckeye in Section 3, T1N R3W. Here a 30 ft. long side hill cut in soft black biotite shist reveals a small content of yellow mica which without a heat test would normally be identified as phlogopite. Perhaps a 1/2 mile to the northwest of the cut is the former crushing and screening plant of Mr. Solomon, it has burned down to a pile of rubble. GW WR 11/21/72

Discussed vermiculite with Bob Languth. He has some sort of an agreement with the owner of the Vermiculite Mine, Maricopa County. (Harold Crevess?). He reported that some small samples have been expanded and the material tested Grade 2 and 3 and had an 8:1 expansion ratio. He further reported that United Nuclear had some interest in possible sources of vermiculite. WR/KP 12/16/77, 2/2/78 a.p.

Frank Cartwright, Phoenix, came in to inquire about vermiculite and perlite deposits. He particularly wanted to see the Solomon vermiculite deposit which I had visited several months ago. He was shown the material which had been taken from there which we tried to exfoliate with a match but it wouldn't. He was directed to Mr. Smith of the Buckeye Mica plant where an experimental furnace has been erected to treat the material from the Solomon deposit. Frank Cartwright called to say he had talked to Mr. Smith manager of Buckeye Mica Company, regarding the Solomon vermiculite deposit and exfoliating furnace and was not impressed. GW WR 8/6/73

Sheet 1 of 2

COMMODITIES VermiculiteMILS ID No. Maricopa #9 Date November 30, 1984ENGINEER Ken A. PhillipsINFORMATION FROM: Field Notes

PROPERTY SUMMARY

I. MINE NAME Vermiculite OTHER POSSIBLE NAMES Solomon, Triple Nickel
INCLUDING ANY CLAIM NAMES NOTEDII. LOCATION: T 1N R 3W SEC(S) NW, NE Sec 4 MINE DISTRICTELEV. 1400' COUNTY TOPO QUAD. Valencia 7.5"DIRECTIONS From intersection of Yuma Road and Watson Road north on Watson Road
(continue under I-10) total of 1.7 miles, then dirt road WNW to cut on south side
of hill. MAP ATTACHED yes

III. OWNERSHIP: NAME PHONE

ADDRESS:

COMPANY NAME IF ANY:

PERTINENT PEOPLE

IV. PROPERTY AND HOLDINGS:

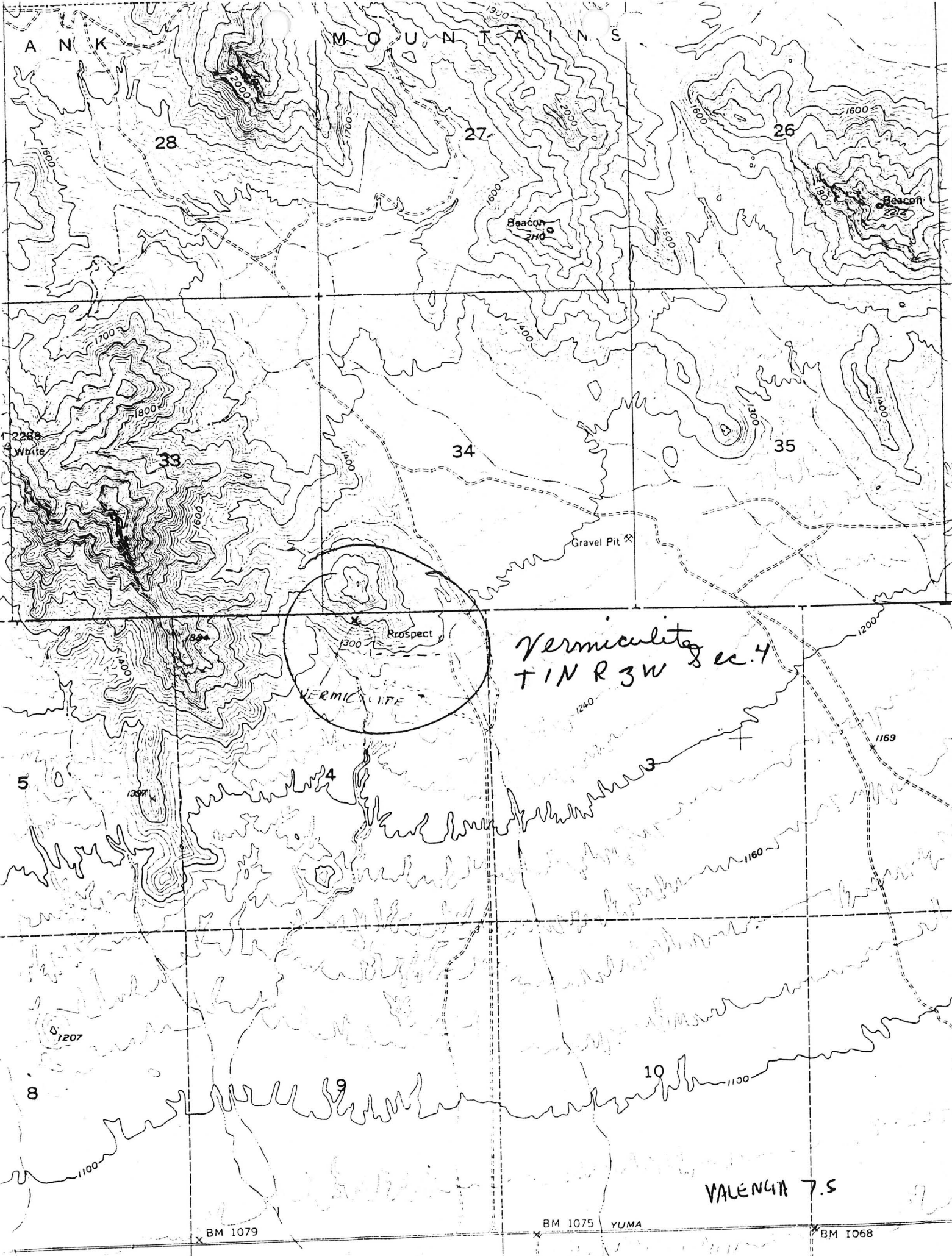
V. PAST PRODUCTION - NOTED, KNOWN, PROBABLE, UNKNOWN, NONE Some small amount reportedVI. CURRENT STATUS: No activityVII. WORKINGS: Open cut on hillside - 2 trenches 10' high, 20 feet wideVIII. GEOLOGY AND MINERALOGY: DEPOSIT TYPE: Lenticular podLENGTH: 100 feet WIDTH: 50 feet VEIN STRIKE E-W DIPHOST ROCK: Precambrian gneissECONOMIC MINERALS: Altered (weathered?) biotite mica gneiss or schist
lense which appears to have characteristics of vermiculite

COMMENTS:

IX. EQUIPMENT ON SIGHT: None, plant at one time located about 1/4 mile east of cut.

X. SAMPLING: NOTE TYPE IF ANY, DRILLING? 2 samples taken. #1 soft loose black
(dark golden brown) vermiculite. #2, harder black biotite ? gneiss with some tiny
quartz and calcite stringers. Both to be evaluated as potential for vermiculite.

XI. REFERENCES AND REMARKS ADMMR Vermiculite Mine file. Triple Nickel Mining Co. file
to be combined into the former.



ANK MOUNTAINS

28

27

26

Beacon 212

Beacon 210

2288
White

33

34

35

Gravel Pit

VERMICULITE
Prospect

Vermiculite
TIN R 3W sec. 4

5

4

3

8

9

10

VALENCIA T.S.

BM 1079

BM 1075 YUMA

BM 1068

ARIZONA DEPARTMENT OF MINERAL RESOURCES

Mineral Building, Fairgrounds

Phoenix, Arizona

1. Information from: Dwight Solomon
- Address: 1338 W. Thomas Road, Phoenix
2. Mine: Vermiculite 3. No. of Claims - Patented _____
Unpatented _____
4. Location: White Tank Mts. N. of Buckeye
5. Sec 4 Tp 1 N Range 3 W 6. Mining District _____
7. Owner: Dwight L. Solomons et al
8. Address: As above
9. Operating Co.: _____
10. Address: _____
11. President: _____ 12. Gen. Mgr.: _____
13. Principal Metals: Vermiculite 14. No. Employed: 1
15. Mill, Type & Capacity: _____
16. Present Operations: (a) Down (b) Assessment work (c) Exploration
(d) Production (e) Rate _____ tpd.
17. New Work Planned: _____

18. Misc. Notes: Vermiculite constitutes about 20 per cent of a highly altered rock. The broken rock is heated to about 1450 - 1500 degrees Fah - renheit and the vermiculite portion expands up to 30 times. The material is then fed to a 1/8 inch screen and the undersize has nearly all of the vermiculite plus some granular fines. This undersize is bagged for use on oily floors in garages, etc. The porous vermiculite absorbs oil and the granular fines prevent one from slipping. As far, 137 customers use up to 14000 lbs per week and only 5 have not yet repeated. The vermiculite can be cleaned by air separation, but there is very little local market for clean material.

Date: 5/2/67

Lewis Abrecht

(Signature) (Field Engineer)

TRIPLE NICKEL MINING COMPANY

Owner: Harold V. Cravasse
5323 East Mockingbird Lane (home)
Paradise Valley, AZ 85253

P. O. Box 368 (business)
Buckeye, AZ 85326

- (a) sole ownership
- (b) sells to wholesalers
- (c) mines vermiculite
- (d) located near the Buckeye Mica Company
- (e) he says he has a plant but doesn't specify where 5/26/78 sef

- (a) mine is located six miles north of Buckeye; at the edge of the White Tanks Mountain
- (b) A mine inspector went in that area but couldn't locate the mine.
- (c) The inspector also went to the Buckeye Mica mill and found some sacks with "Triple Nickel" on them. He said the mill was not operating and didn't look like it had been for while; nobody was around.
- (d) Ann at the mine inspector's office said that Mr. Cravasse had told her that they were going to begin mining but hadn't started yet. She requested they send in notification papers as soon as they started. 6/2/78 sef



STATE OF ARIZONA
DEPARTMENT OF MINES AND MINERAL RESOURCES

Mineral Building, Fairgrounds, Phoenix, Arizona 85007 • (602) 255-3791

MINE: Vermiculite

DATE: January 1985

COUNTY: Maricopa

ENGINEERS: Ken A. Phillips
Nyal J. Niemuth

ADMMR MINE FILE: Vermiculite Mine

SUBJECT: Vermiculite bulk samples from Vermiculite Mine, Maricopa Co.

Sample #1: Best sample, all material passed 1/2" screen with virtually no quartz or calcite contamination.

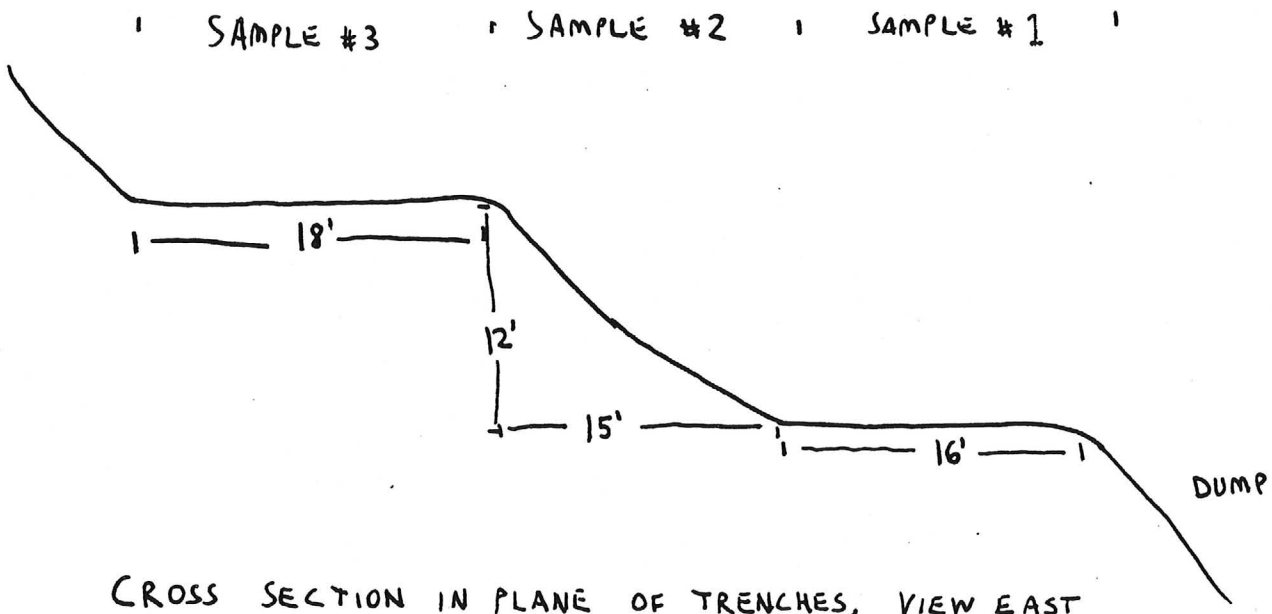
Sample #1 Trench: 16' x 1' x 4" - Represents a 25' x 75' area on the lower bench of pure vermiculite.

Sample #2: Good sample, all material in barrel passed 1/8" screen. Rejects included about 10% quartz and calcite.

Sample #2 Trench: 15' x 1' x 4" - Cut on slope between upper & lower benches, the trench cut mostly vermiculite plus 3 dikes of granite and calcite.

Sample #3: Two barrels, one contains only material which passed 1/8" screen. Other contains crushed material (crusher set at 1/4") which did not pass 1/8" screen.

Sample #3 Trench: 18' x 1' x 3" - Cut accross upper bench representing about 50' of length (poor exposures make width estimate difficult). The cut includes 1 large granite dike and some surface caliche seams contaminating the vermiculite.



CROSS SECTION IN PLANE OF TRENCHES, VIEW EAST

ANALYSIS OF EXPANDED VERMICULITE SAMPLES

DATE: 1/29/85

BY: Nyal J. Niemuth & Ken A. Phillips

SAMPLES:

TVV = Thermorock's Virginia Vermiculite
AZV = Arizona Vermiculite

BULK DENSITY¹ (lb/ft³) OF 6 LITER SAMPLES

TVV	8.6
AZV	30.6

SIZE ANALYSIS (% VOLUME)

	Minus 1/4" Thru Plus 1/8"	Minus 1/8" Thru 20 Mesh	Minus 20 Mesh
TVV	10%	78%	12%
AZV	8%	58%	33%

BULK DENSITY¹ (lb/ft³) BY SIZE

	Minus 1/4" Thru Plus 1/8"	Minus 1/8" Thru 20 Mesh	Minus 20 Mesh
TVV	7.4	7.4	8.9
AZV	24.7	26.6	32.8

ANALYSIS OF CLEANED AZV

A sample of AZV minus 1/8" thru plus 20 mesh was cleaned to remove unexpanded vermiculite and rock. Expanded vermiculite was 84% of this sample by volume and 31% by weight. The expanded and cleaned vermiculite's bulk density¹ was 7.5 lb/ft³.

Footnote:

¹Bulk density not determined according to ASTM standard method.



STATE OF ARIZONA
DEPARTMENT OF MINES AND MINERAL RESOURCES

Mineral Building, Fairgrounds, Phoenix, Arizona 85007 • (602) 255-3791

MINE: Vermiculite

DATE: January 1985

COUNTY: Maricopa

ENGINEERS: Ken A. Phillips
Nyal J. Niemuth

ADMMR MINE FILE: Vermiculite Mine

SUBJECT: Vermiculite bulk samples from Vermiculite Mine, Maricopa Co.

Sample #1: Best sample, all material passed 1/2" screen with virtually no quartz or calcite contamination.

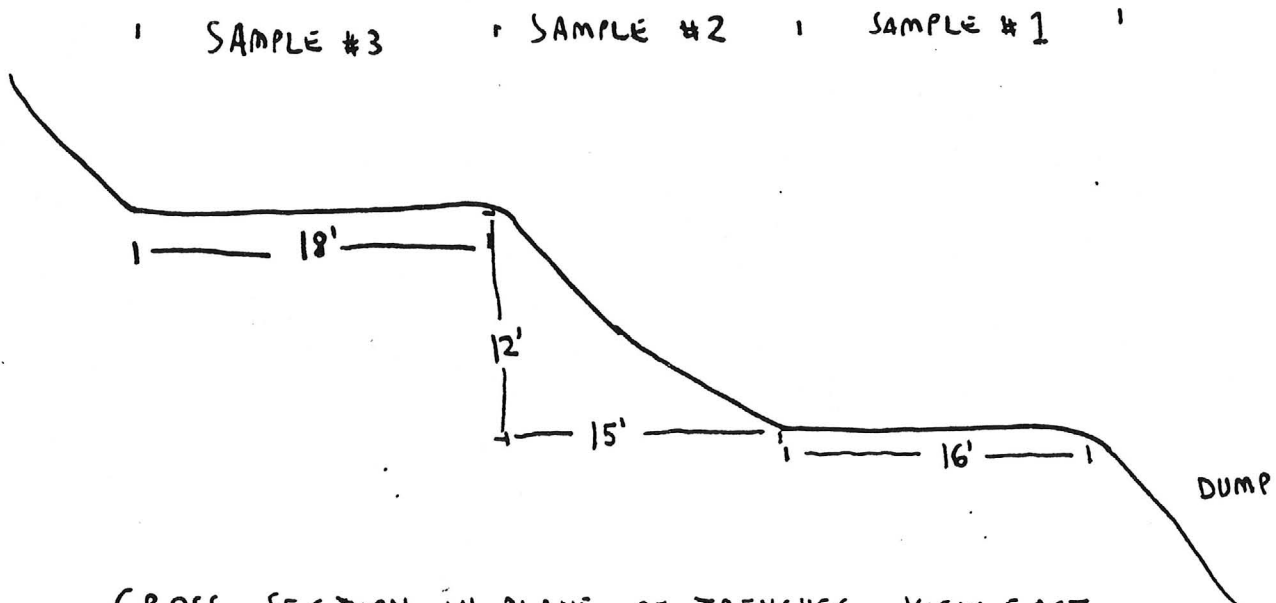
Sample #1 Trench: 16' x 1' x 4" - Represents a 25' x 75' area on the lower bench of pure vermiculite.

Sample #2: Good sample, all material in barrel passed 1/8" screen. Rejects included about 10% quartz and calcite.

Sample #2 Trench: 15' x 1' x 4" - Cut on slope between upper & lower benches, the trench cut mostly vermiculite plus 3 dikes of granite and calcite.

Sample #3: Two barrels, one contains only material which passed 1/8" screen. Other contains crushed material (crusher set at 1/4") which did not pass 1/8" screen.

Sample #3 Trench: 18' x 1' x 3" - Cut accross upper bench representing about 50' of length (poor exposures make width estimate difficult). The cut includes 1 large granite dike and some surface caliche seams contaminating the vermiculite.



CROSS SECTION IN PLANE OF TRENCHES, VIEW EAST

ANALYSIS OF EXPANDED VERMICULITE SAMPLES

DATE: 1/29/85

BY: Nyal J. Niemuth & Ken A. Phillips

SAMPLES:

TVV = Thermorock's Virginia Vermiculite

AZV = Arizona Vermiculite

BULK DENSITY¹ (lb/ft³) OF 6 LITER SAMPLES

TVV	8.6
AZV	30.6

SIZE ANALYSIS (% VOLUME)

	Minus 1/4" Thru Plus 1/8"	Minus 1/8" Thru 20 Mesh	Minus 20 Mesh
TVV	10%	78%	12%
AZV	8%	58%	33%

BULK DENSITY¹ (lb/ft³) BY SIZE

	Minus 1/4" Thru Plus 1/8"	Minus 1/8" Thru 20 Mesh	Minus 20 Mesh
TVV	7.4	7.4	8.9
AZV	24.7	26.6	32.8

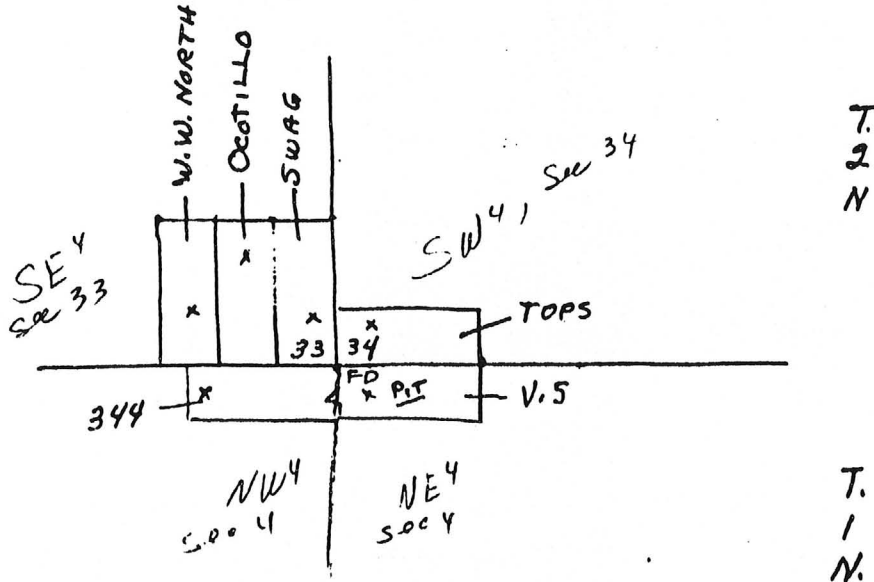
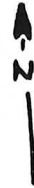
ANALYSIS OF CLEANED AZV

A sample of AZV minus 1/8" thru plus 20 mesh was cleaned to remove unexpanded vermiculite and rock. Expanded vermiculite was 84% of this sample by volume and 31% by weight. The expanded and cleaned vermiculite's bulk density¹ was 7.5 lb/ft³.

Footnote:

¹Bulk density not determined according to ASTM standard method.

MT 13833-364



R. 3 W.

AUG 15 1979 -11 00

STATE OF ARIZONA }
County of Maricopa } ss

I hereby certify that the
in instrument was filed an.
corded at request of

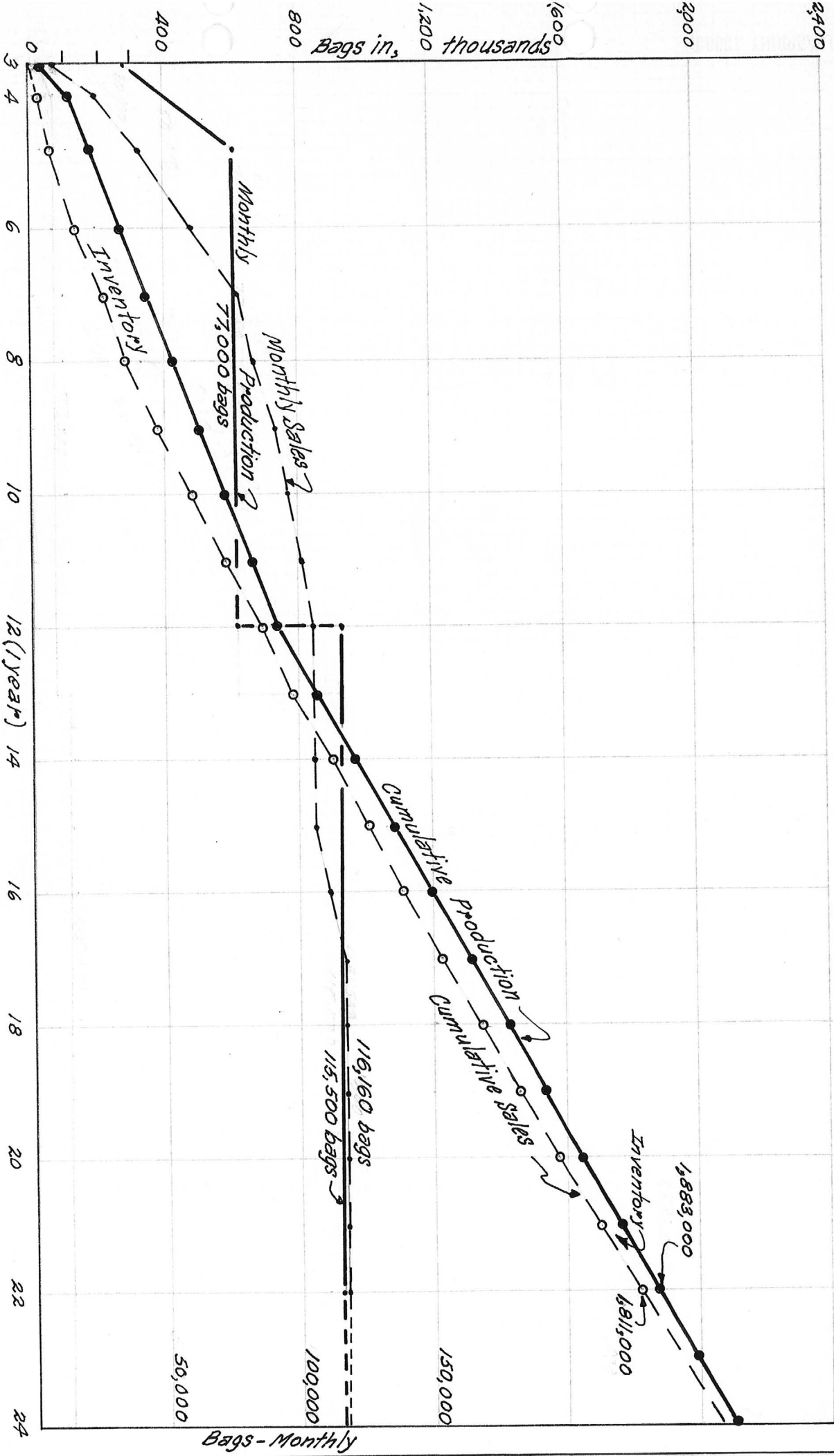
Harold V. Crevasse

in Docket 13833-363-364 SCALE 1" = 2000'
MARICOPA Co. ARIZ.

By *J. Stalling* County Recorder
Deputy Recorder 300

AUG 15 1979 -11 00

ICE
79



20 Month Cumulative-Monthly Production-Sales

Months after Financing Received

After L. Frechette
Dec, 1970 - R.E. Meritz

SCHEDULE "A" - TIME AND EXPENDITURE TABLE - FRECHETTE INDUSTRIES INC., MINE DEVELOPMENT TO INITIAL PRODUCTION STAGE.

MONTH	FIRST		SECOND		THIRD		FOURTH		FIFTH		Totals	Supervis.	Totals	
	1st.	2nd.	3rd.	4th.	5th.	6th.	7th.	8th.	9th.	10th.				
TWO WEEK PERIODS														
(A) - Access Drill Road Const.	\$ 1,350													G) = \$ 1,350.- + \$ 510.- = \$ 1,860-) \$ 17,250.- + \$ 3,060.- = \$ 20,310-
(B) - Core Drilling (Contr.)	\$ 3,300	\$ 5,200	\$ 5,200	\$ 3,550										
(C) - Mine Road Const. (Pre-Mine)				\$ 2,960	\$ 1,344									\$ 4,304.- + \$ 510.- = \$ 4,814-
(D) - Mine 5000 Tons (Con't Haul)					\$ 7,350	\$ 8,700								\$ 16,050.- + \$ 765.- = \$ 16,815-
(E) - Plant Site Preparation (Pre-equipment)				\$ 5,840	\$ 2,680		\$ 1,500	\$ 1,500						\$ 11,520.- + \$ 1,295.- = \$ 12,815-
(F) - Equipment Installation and Erection						\$ 3,000	\$ 3,000	\$ 1,800						\$ 7,800.- + \$ 1,040.- = \$ 8,840-
(G) - Equipment Purchase. Order						\$ 32,000	\$ 32,000	\$ 16,056	\$ 37,840					\$ 117,896.- = \$ 117,896-
(H) - Plant Operation Trial Period								\$ 2,850	\$ 1,425					\$ 4,275.- + \$ 1,000.- = \$ 5,275-
(I) - Plant Full Production Period														(Included in Marketing Report)
(J) - Mine (stock pile 25,000+ tons raw material)							\$ 3,600	\$ 3,600	\$ 3,600	\$ 3,600				\$ 14,400.- + \$ 910.- = \$ 15,310-
(K) - Consulting Supervision & Expenses.	\$ 1,020	\$ 1,020	\$ 1,020	\$ 1,020	\$ 1,020	\$ 1,020	\$ 990	\$ 990	\$ 990					\$ 9,090.-
Totals	\$ 5,670	\$ 6,220	\$ 6,220	\$ 13,370	\$ 12,394	\$ 44,720	\$ 41,090	\$ 26,796	\$ 43,855	\$ 3,600				\$ 203,935.- \$ 9,090.- \$ 203,935-
LABOR FORCE - Mining					1	1	1	1	1	1				
Plant Construction				4	4	5	5	1	4	5				** (Included in Marketing Report)
Plant Operation (Trial)				4	5	6	6	6	6	6	1			
Totals				4	5	6	6	6	6	6	1			

* These two increments are considered as one phase, total expenditure being \$22,170.-.

Prepared by:
Richard E. Mierits
Mining Consultant
Phoenix, Arizona

STATE OF ARIZONA

County of MARICOPA

84-378760

DAVID YOUNGBLOOD

says that he is a citizen of the United States and more than twenty-one years of age, and resides at ASHDOWN in LITTLE RIVER County, State of ARKANSAS, and is personally acquainted with the mining claim S. known as W.W. NORTH SWAG, DLOTTILLO, TAPS, NO. 344, V. NO. 5

mining claim S. situate in _____ Mining District, County of MARICOPA, State of Arizona, the location notice S. of which ARE recorded in the office of the County Recorder of said County, in Book 14587 of Records of Mines, at page 179 THRU 180; that between the 18TH day of MARCH, A. D. 1984, and the 25TH day of MARCH, A. D. 1984, at least SIX HUNDRED (600)

dollars worth of work and improvements were done and performed upon said claim S. not including the location work of said claim S. Such work and improvements were made by and at the expense of DAVID YOUNGBLOOD AND MARK YOUNGBLOOD owner S. of said claim S. for the purpose of complying with the laws of the United States pertaining to assessment of annual work, and DAVID YOUNGBLOOD AND MARK YOUNGBLOOD

were the men employed by said owner S. and who labored upon said claim S. did said work and improvements, the same being as follows, to-wit: REWORKING OF DRAINAGE, ROAD IMPROVEMENT ON, AND INTO SAID CLAIMS, REMOVAL OF OVERBURDEN, PIT ENLARGEMENT AND STOCK PILING OF ORE.

RECEIVED
B.L.M. AZ STATE OFFICE
SEP 6 1984
07:45 A.M.
PHOENIX, ARIZONA

Subscribed and sworn to before me this 17 day of August, A. D. 1984
My commission expires 3-26-91, Charles Cooper
Notary Public.

STATE OF ARIZONA
COUNTY OF _____

I hereby certify that the within document was filed and recorded at request

RECORDED IN OFFICIAL RECORDS
MARICOPA COUNTY, ARIZONA
AUG 29 1984 - 12 45
By BILL HENRY, COUNTY RECORDER
FEE \$5.00 PGS 1ms
Fee \$1.75

Witness my hand and official seal the day and year aforesaid.

County Recorder.
Deputy Recorder.

M, Docket

Indexed	Photostat Compared	Noted
---------	--------------------	-------

URN TO: DAVID YOUNGBLOOD
RT. 2 BOX 76A-5 ASHDOWN AR. 71822
ARKANSAS

SCHEDULE "A" - TIME AND EXPENDITURE TABLE - FRECHETTE INDUSTRIES INC., MINE DEVELOPMENT TO INITIAL PRODUCTION STAGE.

MONTH	FIRST		SECOND		THIRD		FOURTH		FIFTH		Totals	Supervis.	Totals
	1st.	2nd.	3rd.	4th.	5th.	6th.	7th.	8th.	9th.	10th.			
(A) - Access Drill Road Const.	\$ 1,350												
(B) - Core Drilling (Contr.)	\$ 3,300	\$ 5,200	\$ 5,200	\$ 3,550									
(C) - Mine Road Const. (Pre-Mine)				\$ 2,960	\$ 1,344								
(D) - Mine 5000 Tons (Con't Haul)					\$ 7,350	\$ 8,700							
(E) - Plant Site Preparation (Pre-equipment)				\$ 5,840	\$ 2,680		\$ 1,500	\$ 1,500					
(F) - Equipment Installation and Erection						\$ 3,000	\$ 3,000	\$ 1,800					
(G) - Equipment Purchase. Order						\$ 32,000	\$ 32,000	\$ 16,056	\$ 37,840				
(H) - Plant Operation Trial Period								\$ 2,850	\$ 1,425				
(I) - Plant Full Production Period													(Included in Marketing Report)
(J) - Mine (stock pile 25,000+ tons raw material)							\$ 3,600	\$ 3,600	\$ 3,600	\$ 3,600			
(K) - Consulting Supervision & Expenses.	\$ 1,020	\$ 1,020	\$ 1,020	\$ 1,020	\$ 1,020	\$ 1,020	\$ 990	\$ 990	\$ 990				
Totals	\$ 5,670	\$ 6,220	\$ 6,220	\$ 13,370	\$ 12,394	\$ 44,720	\$ 41,090	\$ 26,796	\$ 43,855	\$ 3,600			\$203,935.- \$ 9,090.- \$203,935-
LABOR FORCE - Mining					1	1	1	1	1	1			
Plant Construction				4	4	5	5	1					
Plant Operation (Trial)								4	5				** (Included in Marketing Report)
Totals				4	5	6	6	6	6	1			

* These two increments are considered as one phase, total expenditure being \$22,170.-.

Prepared by:
Richard E. Mieritz
Mining Consultant
Phoenix, Arizona

DAVID YOUNG BLOOD

says that he is a citizen of the United States and more than twenty-one years of age, and resides at ASHDOWN in LITTLE RIVER County, State of ARKANSAS and is personally acquainted with the mining claim known as W.W. NORTH SWAG, D. COTILLO, TAPS, NO. 344, V. NO. 5

mining claim situate in

Mining District, County of MARILOPA, State of Arizona, the location notice of which

is recorded in the office of the County Recorder of said County, in Book 14587 of Records of

Mines, at page 179 THRU NO 187#; that between the 18TH day of MARCH, A. D., 1984,

and the 25TH day of MARCH, A. D., 1984, at least SIX HUNDRED (600)

dollars worth of work and improvements were

done and performed upon said claim not including the location work of said claim. Such work

and improvements were made by and at the expense of DAVID YOUNG BLOOD

AND MARK YOUNG BLOOD

owner of said claim for the purpose of complying with the laws of the United States per-

taining to assessment of annual work, and DAVID YOUNG BLOOD

AND MARK YOUNG BLOOD

were the men employed by said owner and who labored upon said claim, did said work and

improvements, the same being as follows, to-wit: REWORKING OF

DRAINAGE, ROAD IMPROVEMENT ON, AND INTO

SAID CLAIMS, REMOVAL OF OVERBURDEN,

PIT ENLARGEMENT AND STOCK PILING

OF ORE.

RECEIVED B.L.M. AZ STATE OFFICE

SEP 6 1984

07.45 A.M. PHOENIX, ARIZONA

Subscribed and sworn to before me this 17 day of August, A. D., 1984

My commission expires 3-26-91, Charles E. Cooper Notary Public.

STATE OF ARIZONA COUNTY OF

Witness my hand and official seal the day and year aforesaid.

I hereby certify that the within document was filed and recorded at request

RECORDED IN OFFICIAL RECORDS MARICOPA COUNTY, ARIZONA

AUG 29 1984 - 12 45

BILL HENRY, COUNTY RECORDER

FEE at 5.00 PGS 1ns

Fee \$1.75

Table with 3 columns: Indexed, Photostat Compared, Blotted

M., Docket

URN TO: DAVID YOUNG BLOOD RT. 2 BOX 76A-5 ASHDOWN AR. 71822 ARKANSAS