



CONTACT INFORMATION

Mining Records Curator
Arizona Geological Survey
1520 West Adams St.
Phoenix, AZ 85007
602-771-1601
<http://www.azgs.az.gov>
inquiries@azgs.az.gov

The following file is part of the

Arizona Department of Mines and Mineral Resources Mining Collection

ACCESS STATEMENT

These digitized collections are accessible for purposes of education and research. We have indicated what we know about copyright and rights of privacy, publicity, or trademark. Due to the nature of archival collections, we are not always able to identify this information. We are eager to hear from any rights owners, so that we may obtain accurate information. Upon request, we will remove material from public view while we address a rights issue.

CONSTRAINTS STATEMENT

The Arizona Geological Survey does not claim to control all rights for all materials in its collection. These rights include, but are not limited to: copyright, privacy rights, and cultural protection rights. The User hereby assumes all responsibility for obtaining any rights to use the material in excess of "fair use."

The Survey makes no intellectual property claims to the products created by individual authors in the manuscript collections, except when the author deeded those rights to the Survey or when those authors were employed by the State of Arizona and created intellectual products as a function of their official duties. The Survey does maintain property rights to the physical and digital representations of the works.

QUALITY STATEMENT

The Arizona Geological Survey is not responsible for the accuracy of the records, information, or opinions that may be contained in the files. The Survey collects, catalogs, and archives data on mineral properties regardless of its views of the veracity or accuracy of those data.

PRINTED: 09/05/2002

ARIZONA DEPARTMENT OF MINES AND MINERAL RESOURCES AZMILS DATA

PRIMARY NAME: VALENTINE CLAIMS

ALTERNATE NAMES:

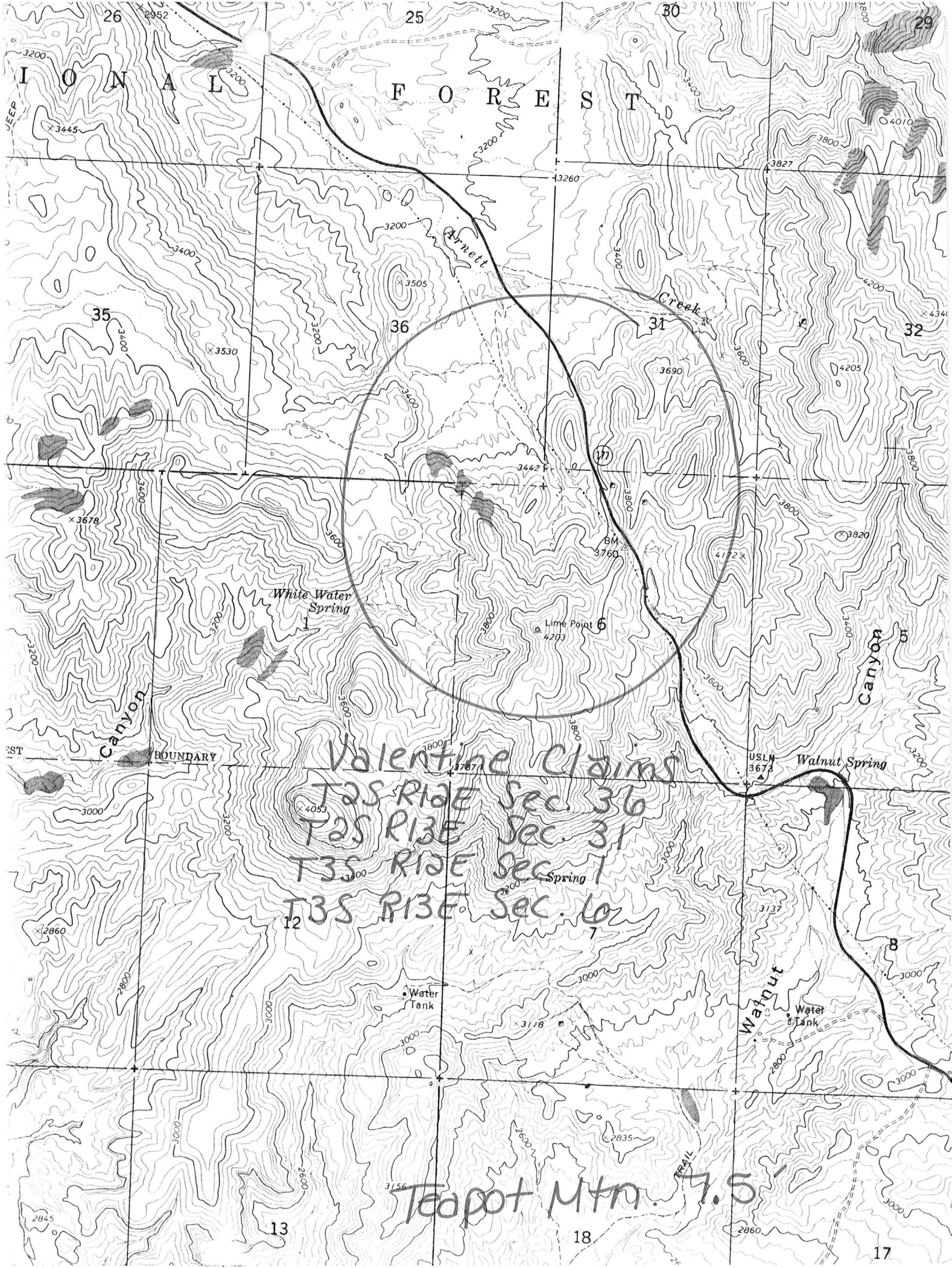
PINAL COUNTY MILS NUMBER: 160

LOCATION: TOWNSHIP 2 S RANGE 12 E SECTION 36 QUARTER SE
LATITUDE: N 33DEG 12MIN 39SEC LONGITUDE: W 111DEG 04MIN 10SEC
TOPO MAP NAME: TEAPOT MOUNTAIN - 7.5 MIN

CURRENT STATUS: EXP PROSPECT

COMMODITY:
LEAD
SILVER

BIBLIOGRAPHY:
ADMMR VALENTINE CLAIMS
CLAIMS EXTEND INTO SEC. 1-T3S-R12E, SEC. 6
T3S-R13E AND SEC. 31-T2S-R13E



I O N A L F O R E S T

Valentine Claims
T2S R1E Sec. 36
T2S R1E Sec. 31
T3S R1E Sec. 1
T3S R1E Sec. 10

Teapot Mtn. 7.5'

13

18

17

26
3200
3445
2952

25

30

29

35

36

31

32

Canyon

Canyon

White Water Spring

Lime Point 6
4203

Walnut Spring

Water Tank

Water Tank

3156

3137

2845

(17)

4010

4205

3920

USLN 3673

3442

BM 3760

3505

3530

3678

3000

4053

2860

3118

3000

3000

3000

3000

3400

3200

3200

3400

3600

3800

4340

3400

3600

3800

3800

3600

3600

3600

3200

3000

3200

3600

3800

3200

3000

3000

3137

3000

3200

2800

3000

3000

3000

3000

3000

3000

2800

3000

3000

3000

3000

2600

2600

2600

2835

3000

2800

3000

3000

2845

3000

2600

2600

2600

2835

3000

2800

3000

3000

VEEP

BOUNDARY

TRAIL

DEPARTMENT OF MINERAL RESOURCES

STATE OF ARIZONA
FIELD ENGINEERS REPORT

Mine Valentine Claims Date February 28, 1962
District Mineral Creek District, Pinal Co. Engineer Lewis A. Smith
Subject: Interviews with Ray Luper, Mining Broker, 5408 5th St., Phoenix and Harry Valentine (owner) Goodrich Bldg., Phoenix.

Option: Ray Luper is trying to option the property.

Property: 15 claims, unpatented.

Location: S. 1, T. 3 S., R. 12 E., S. 6, T. 3 S., R. 13 E., S. 31, T. 2 S., R. 13 E., S. 36, T. 2 S., R. 12 E.

Minerals: Lead-silver.

Work: (a) 65 foot adit.

(b) 5 shafts, 12, 20, 25, 30 and 60 feet, respectively.

(3) Open cut - 50 feet long, 20 feet wide and 18 feet deep at deepest place. This cut has shafts 12 and 18 feet deep near the two ends.

History: Claims held by Harry Valentine (and two partners) for 30 years. The two partners are dead now.

2 few small shipments were made years ago.

Geology: The ore lies in kidneys or lenses in a vein structure which strikes NW-SE and which is nearly vertical. The vein as exposed in the cut and 65 foot shaft averages about $1\frac{1}{2}$ feet wide and contains quartz-calcite and some limonite. One lense, or kidney, of ore was sampled by Ray Luper. This assayed 37 per cent lead and 10.6 ounces of silver over a sample width of $1\frac{1}{2}$ feet.

VALENTINE CLAIMS

MILS Pinal Index #160

Teapot Mountain 7.5' Topo (included in file)

PINAL COUNTY
MINERAL CREEK

T2S R12E Sec. 36

T2S R13E Sec. 31

T3S R12E Sec. 1

T3S R13E Sec. 6