



## **CONTACT INFORMATION**

Mining Records Curator  
Arizona Geological Survey  
1520 West Adams St.  
Phoenix, AZ 85007  
602-771-1601  
<http://www.azgs.az.gov>  
[inquiries@azgs.az.gov](mailto:inquiries@azgs.az.gov)

The following file is part of the

Arizona Department of Mines and Mineral Resources Mining Collection

## **ACCESS STATEMENT**

These digitized collections are accessible for purposes of education and research. We have indicated what we know about copyright and rights of privacy, publicity, or trademark. Due to the nature of archival collections, we are not always able to identify this information. We are eager to hear from any rights owners, so that we may obtain accurate information. Upon request, we will remove material from public view while we address a rights issue.

## **CONSTRAINTS STATEMENT**

The Arizona Geological Survey does not claim to control all rights for all materials in its collection. These rights include, but are not limited to: copyright, privacy rights, and cultural protection rights. The User hereby assumes all responsibility for obtaining any rights to use the material in excess of "fair use."

The Survey makes no intellectual property claims to the products created by individual authors in the manuscript collections, except when the author deeded those rights to the Survey or when those authors were employed by the State of Arizona and created intellectual products as a function of their official duties. The Survey does maintain property rights to the physical and digital representations of the works.

## **QUALITY STATEMENT**

The Arizona Geological Survey is not responsible for the accuracy of the records, information, or opinions that may be contained in the files. The Survey collects, catalogs, and archives data on mineral properties regardless of its views of the veracity or accuracy of those data.

PRINTED: 09/05/2002

ARIZONA DEPARTMENT OF MINES AND MINERAL RESOURCES AZMILS DATA

PRIMARY NAME: VAL ANN

ALTERNATE NAMES:

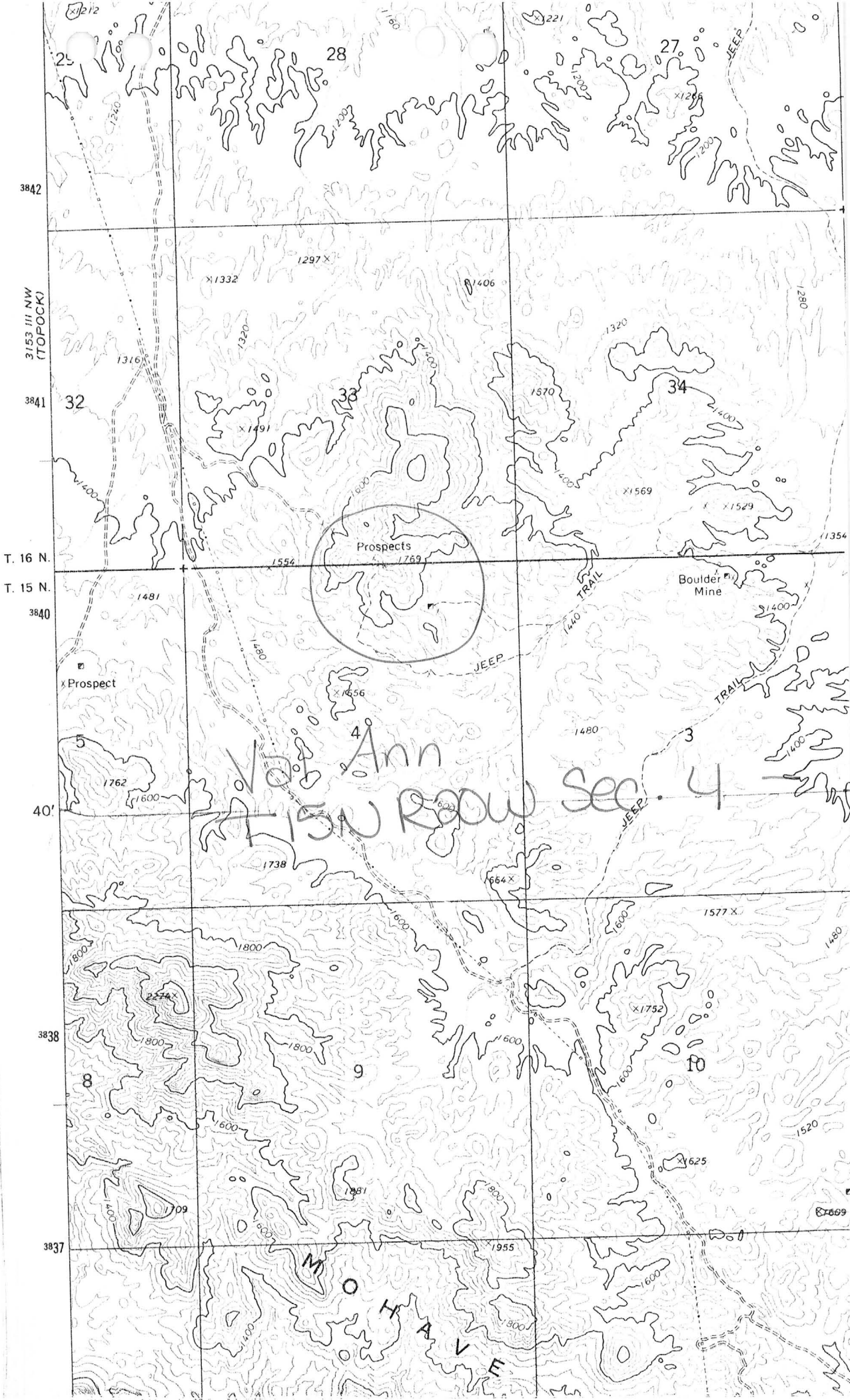
MOHAVE COUNTY MILS NUMBER: 300A

LOCATION: TOWNSHIP 15 N RANGE 20 W SECTION 4 QUARTER --  
LATITUDE: N 34DEG 40MIN 29SEC LONGITUDE: W 114DEG 21MIN 22SEC  
TOPO MAP NAME: FRANCONIA - 7.5 MIN

CURRENT STATUS: EXP PROSPECT

COMMODITY:  
GOLD

BIBLIOGRAPHY:  
ADMMR VAL ANN FILE  
ADDITIONAL WORKING SEC. 33-S2-T16N-R20W



3842

3153 III NW  
(TOPOCK)

3841

T. 16 N.

T. 15 N.

3840

40'

3838

3837

Prospects

Ann  
150 Row Sec. 4

Boulder Mine

M O T H A V E

25

28

27

32

33

34

5

4

3

8

9

10

109

181

625

664 X

1577 X

X1332

1297 X

1406

1316

1320

1400

1570

1320

X1569

X1529

11354

1481

1480

1656

1480

1762

1600

1738

622

1800

1800

1600

1600

1480

1800

1800

1600

1600

1520

1400

1600

1800

1600

87609

1955

300

Ann Maluia told me after the meeting that she had made a deal with Mr. Jetho for 57 claims nearby. GW WR 4-3-74

---

DEPARTMENT OF MINERAL RESOURCES  
STATE OF ARIZONA  
FIELD ENGINEERS REPORT

FILED

APR 21 1966

Mine Val Ann (Au)

Date March 9, 1966

District Havasu, Mohave County

Engineer F.T. Johnson

Subject: Visit of March 3, 1966

Ownership: Mrs. Ann Maluia - 4011 Highway 66E Kingman. 6 unpatented mining claims.

Location: Claims are in the Needles that are the NW extension of the Mohave Mts. south of Topock. They are reached by taking the Lake Havasu road (Highway 95) that goes south from Hwy. 66 about 7 miles east of Topock. The claims are about a mile west of the Havasu road, and 4 miles from Hwy 66. The legal description places them in the NW $\frac{1}{4}$  of Sec. 4, T. 15 N., R. 20 W.

General Geology Quartz and pegmatites in granite gneiss. The vein of quartz strikes about N 20° E dipping west at 75°. The most mineralized portion of the vein is about 28" wide although quartz stringers occur intermittently for about 6 feet. Alteration of the gneiss is light except near the borders of the quartz vein. A shaft approximately 70 ft. deep was put down on the quartz and about 20 tons of ore (?) was stock-piled. The owner did not know what it would carry in gold although it is said it pans fairly well.

Dikes of diabase are numerous and in places associated with the quartz.