



CONTACT INFORMATION

Mining Records Curator
Arizona Geological Survey
1520 West Adams St.
Phoenix, AZ 85007
602-771-1601
<http://www.azgs.az.gov>
inquiries@azgs.az.gov

The following file is part of the

Arizona Department of Mines and Mineral Resources Mining Collection

ACCESS STATEMENT

These digitized collections are accessible for purposes of education and research. We have indicated what we know about copyright and rights of privacy, publicity, or trademark. Due to the nature of archival collections, we are not always able to identify this information. We are eager to hear from any rights owners, so that we may obtain accurate information. Upon request, we will remove material from public view while we address a rights issue.

CONSTRAINTS STATEMENT

The Arizona Geological Survey does not claim to control all rights for all materials in its collection. These rights include, but are not limited to: copyright, privacy rights, and cultural protection rights. The User hereby assumes all responsibility for obtaining any rights to use the material in excess of "fair use."

The Survey makes no intellectual property claims to the products created by individual authors in the manuscript collections, except when the author deeded those rights to the Survey or when those authors were employed by the State of Arizona and created intellectual products as a function of their official duties. The Survey does maintain property rights to the physical and digital representations of the works.

QUALITY STATEMENT

The Arizona Geological Survey is not responsible for the accuracy of the records, information, or opinions that may be contained in the files. The Survey collects, catalogs, and archives data on mineral properties regardless of its views of the veracity or accuracy of those data.

ARIZONA DEPARTMENT OF MINES AND MINERAL RESOURCES AZMILS DATA

PRIMARY NAME: UNITED ARIZONA COPPER

ALTERNATE NAMES:

CLAIMS MS 3731
BLOODY BASIN MINERAL DEV. CO.
GOLDFLOWER GROUP
ARIZONA COPPER QUEEN

YAVAPAI COUNTY MILS NUMBER: 762

LOCATION: TOWNSHIP 10 N RANGE 4 E SECTION 33 QUARTER SW
LATITUDE: N 34DEG 12MIN 02SEC LONGITUDE: W 111DEG 56MIN 57SEC
TOPO MAP NAME: BROOKLYN PEAK - 7.5 MIN

CURRENT STATUS: PAST PRODUCER

COMMODITY:

COPPER OXIDE
COPPER SULFIDE

BIBLIOGRAPHY:

USGS BROOKLYN PEAK QUAD
BLM MINING DISTRICT SHEETS 98 & 99
ADMMR UNITED ARIZONA COPPER FILE
CLAIMS EXTEND INTO SEC. 33 AND
SEC. 3 T10N-R3E AND SEC. 21 T9.5N-R4E
ADMMR ARIZONA COPPER QUEEN COLVO FILE
ADMMR UNITED ARIZONA COLVO FILE

GOLDFLOWER GROUP

YAVAPAI COUNTY

NJN WR 9/16/83: Matt Pecharick, P.O. Box ⁶⁴⁰~~638~~, Clarkdale, AZ 86324 visited. He reported that he and his brothers Raymond and Joe have 41 claims, the Goldflower 9-48 (AMC lead file 103338) located in T10N R4E Sec. 32, 33, 28, 29, ~~plus the patented claims~~ which include the Piedmont Mine and Goldflower Group, Yavapai County. Mr. Pecharick believes the Piedmont produced during 1914-16 and shipped to the Humboldt Smelter. (a check with the BG&MT shwos no recorded production.) Recent sampling on one shoot or pipe assayed 7% Cu and 4 oz. Au/ton. The Picharich's would like to lease the property to an interest party.

SHATTUCK DENN MINING CORPORATION
and
SUBSIDIARIES

Humboldt

Office

Date..... August 5, 1966

TO: C. R. Sundeen

(ALERT)
SUBJECT: BEN WILLIAMS PROPERTY
CLARKDALE, ARIZONA
Phone 634-8841

FROM: J. Olaf Sund

TYPE: Copper

TERMS REQUESTED: Not discussed at this time.

REFERENCES:

This property is directly north of the "Rosalie Mine" reported on by the writer on April 19, 1966.

LOCATION: TION R 4 E

This property is located at the north end of the New River Mountain Range in the southeast corner of Yavapai County. It is some 15 miles by road from Highway 69 on the way to Bloody Basin. It does in fact straddle the above gravel road.

INTRODUCTION:

There are some 31 unpatented claims in this property. They have been laid out to include the old United Arizona and the Arizona Copper Queen Mine shafts. As such it is probably contiguous to the north of the old Rosalie Mine property.

These properties were first explored and developed from the end of World War I to the early 1920's. It is believed that copper production was limited.

They are now called the "Goldflower Group" ← file

GEOLOGY:

The area is underlain by massive, medium to coarse-grained granitic rocks. It is generally pink to greyish and similar to the intrusive at the Rosalie Mine. That is to say, it is part of the batholith that forms the New River Mountain Range.

There are several narrow glassy quartz fissure veins that traverse the entire property with distinct regularity. These strike at approximately north 10 degrees east and dip vertically to steeply east. Each quartz vein may vary from 6 to 18 inches wide.

MINERALIZATION:

Almost everywhere that the veins have been trenched on surface there is some malachite, azurite and chalcocite. With very few exceptions this mineralization is restricted to within the quartz veins. The adjacent granite is barren and generally unaltered.

From the experience of an underground examination at the Rosalie Mine, the above

copper carbonates etc are after limited amounts of chalcopyrite.

The following samples were collected for check purposes only:

<u>Sample No.</u>	<u>Description or Location</u>	<u>Au</u>	<u>Ag</u>	<u>Cu</u>
12709	North end claim 8--18" quartz	.02	Tr	1.06
12710	Calim #7--2' quartz	.01	Tr	0.16
12711	South end claim 8--qtz with rust	.11	Tr	4.72
12712	" " " 8--granite w/cu	Nil	Tr	0.38
12713	North end claim 9--qtz	.01	Tr	1.08
12714	" " " "--granite w/cu	Tr	Tr	0.92
12715	Middle of claim 9--quartz	Tr	Tr	4.56
12716	North end claim 2--dulp rock	Tr	Tr	1.58
12717	North end claim 2--18" quartz	Tr	Tr	0.60

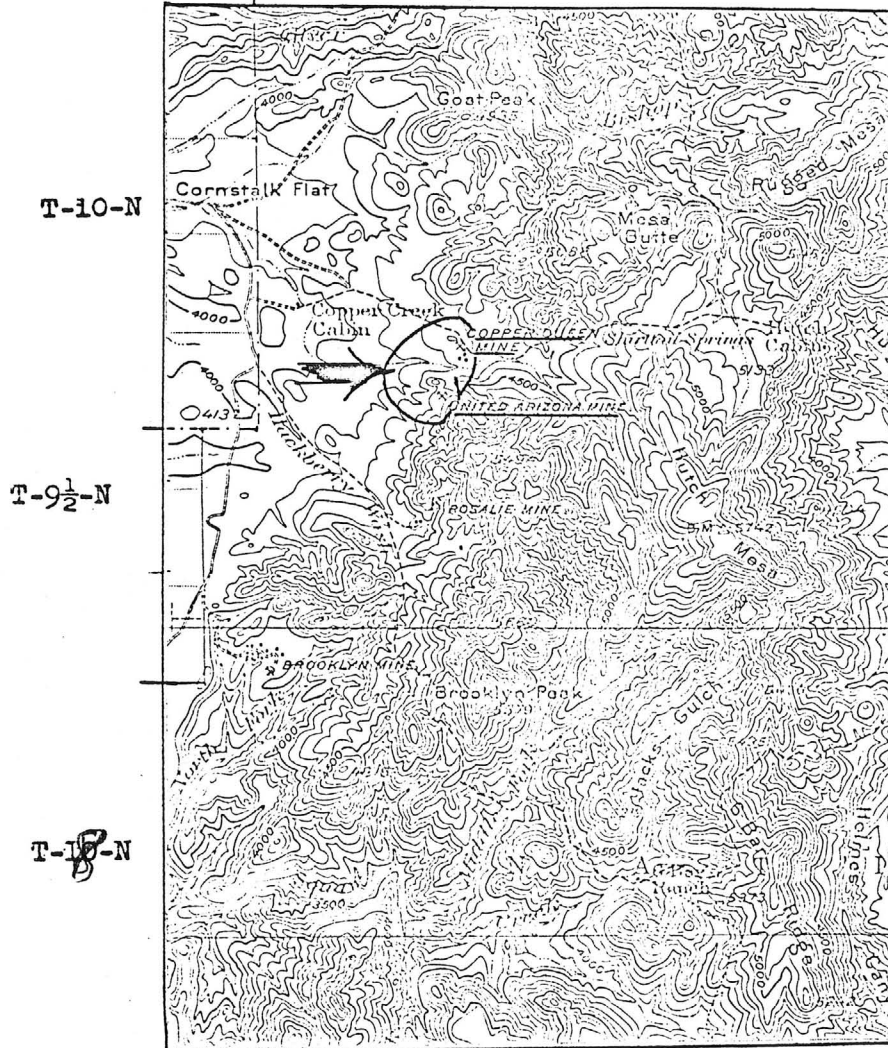
CONCLUSIONS:

Each of these very narrow quartz stringers are some 300 feet apart and therefore it would be impossible to develop any substantial tonnage for underground work or reasonable grade for open pit mining.

Nothing should be done with this property.

R-3-E

R4E



LOCATION OF BEN WILLIAMS PROPERTY

Scale 1 : 125,000

Road To Bloody Basin

15 miles to
Black Canyon
4 way

creek

27	26	25	24	23				
14	13	12	11	10				
15	16	7	8	1				
17	18	6	9	2	22			
19	20	5	4	3	21	78	79	30
								31 X

1100' vent shaft