



CONTACT INFORMATION

Mining Records Curator
Arizona Geological Survey
1520 West Adams St.
Phoenix, AZ 85007
602-771-1601
<http://www.azgs.az.gov>
inquiries@azgs.az.gov

The following file is part of the

Arizona Department of Mines and Mineral Resources Mining Collection

ACCESS STATEMENT

These digitized collections are accessible for purposes of education and research. We have indicated what we know about copyright and rights of privacy, publicity, or trademark. Due to the nature of archival collections, we are not always able to identify this information. We are eager to hear from any rights owners, so that we may obtain accurate information. Upon request, we will remove material from public view while we address a rights issue.

CONSTRAINTS STATEMENT

The Arizona Geological Survey does not claim to control all rights for all materials in its collection. These rights include, but are not limited to: copyright, privacy rights, and cultural protection rights. The User hereby assumes all responsibility for obtaining any rights to use the material in excess of "fair use."

The Survey makes no intellectual property claims to the products created by individual authors in the manuscript collections, except when the author deeded those rights to the Survey or when those authors were employed by the State of Arizona and created intellectual products as a function of their official duties. The Survey does maintain property rights to the physical and digital representations of the works.

QUALITY STATEMENT

The Arizona Geological Survey is not responsible for the accuracy of the records, information, or opinions that may be contained in the files. The Survey collects, catalogs, and archives data on mineral properties regardless of its views of the veracity or accuracy of those data.

04/19/91

ARIZONA DEPARTMENT OF MINES AND MINERAL RESOURCES FILE DATA

PRIMARY NAME: UNION M.S. 4575

ALTERNATE NAMES:

LEO CLAIMS
ALTA VISTA CLAIMS
JACK WHITE SHAFT
WEBB GROUP
EVRICH GOLD MINING CO.
HARTMAN GOLD MINING & MILLING

MARICOPA COUNTY MILS NUMBER: 483A

LOCATION: TOWNSHIP 4 N RANGE 3 E SECTION 22 QUARTER NW
LATITUDE: N 33DEG 41MIN 00SEC LONGITUDE: W 112DEG 02MIN 43SEC
TOPO MAP NAME: UNION HILLS - 7.5 MIN

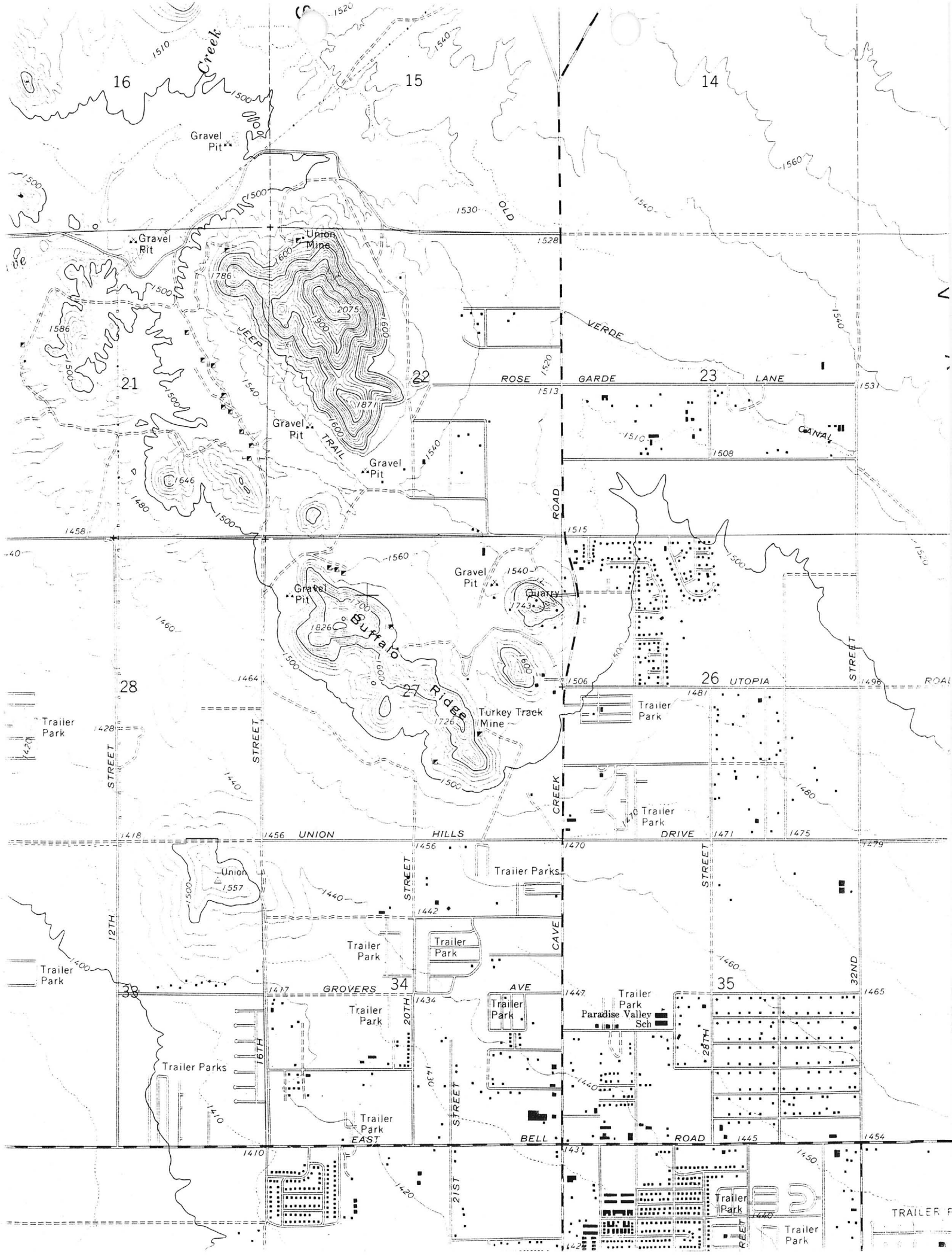
CURRENT STATUS: PAST PRODUCER

COMMODITY:

GOLD LODE

BIBLIOGRAPHY:

USGS UNION HILLS QUAD
BLM MINING DISTRICT SHEET
ADMMR UNION MINE FILE
BLM MINERAL SURVEY MS 4575
SEE ADMMR WEBB GROUP FILE - MAP
ADMMR "U" FILE
WILSON E, CUNNINGHAM J & BUTLER G AZBM BULL
137 P 165-166
TENNEY J AZBM BULL 125 P 98-99
TENNEY J AZBM BULL 129 P 86
ELSING N J & HEINEMAN AZBM BULL 140 P 94

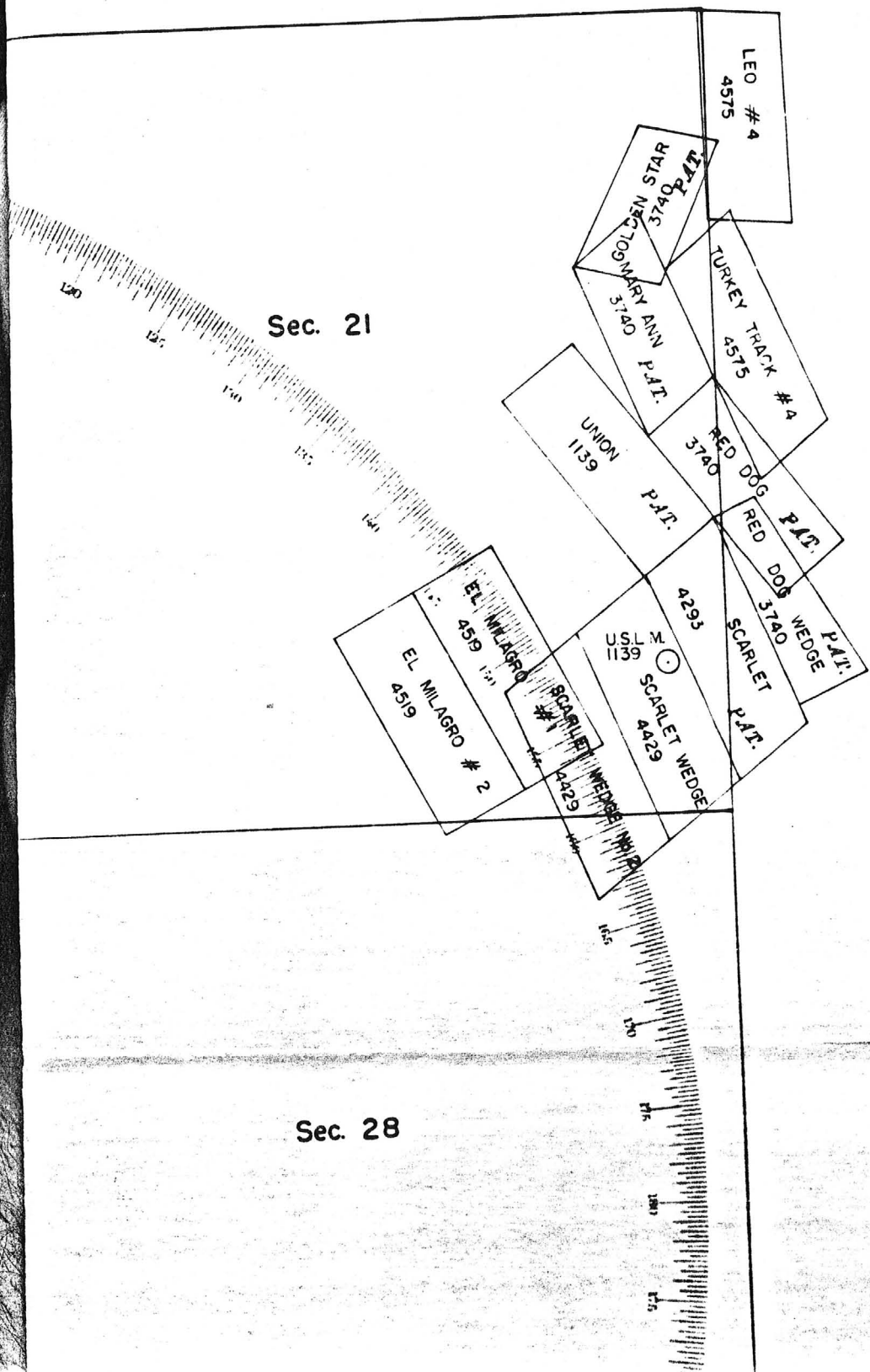


CAVE CREEK DIST.
WINIFRED DIST.

74

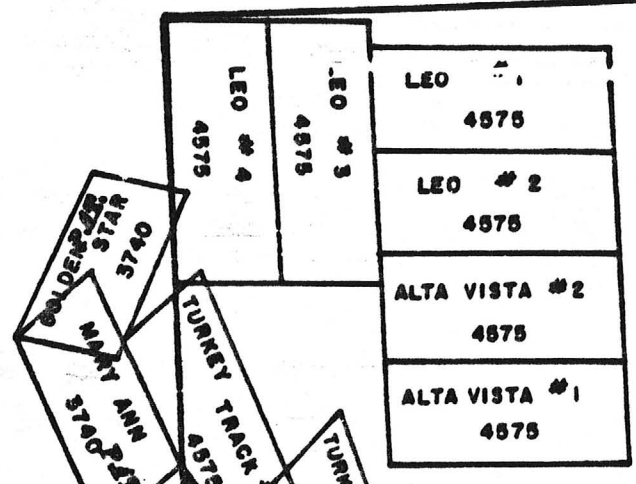
SW 1/4, T. 4
CAVE CREEK
WINIFRED DIST.

Union
(OK)

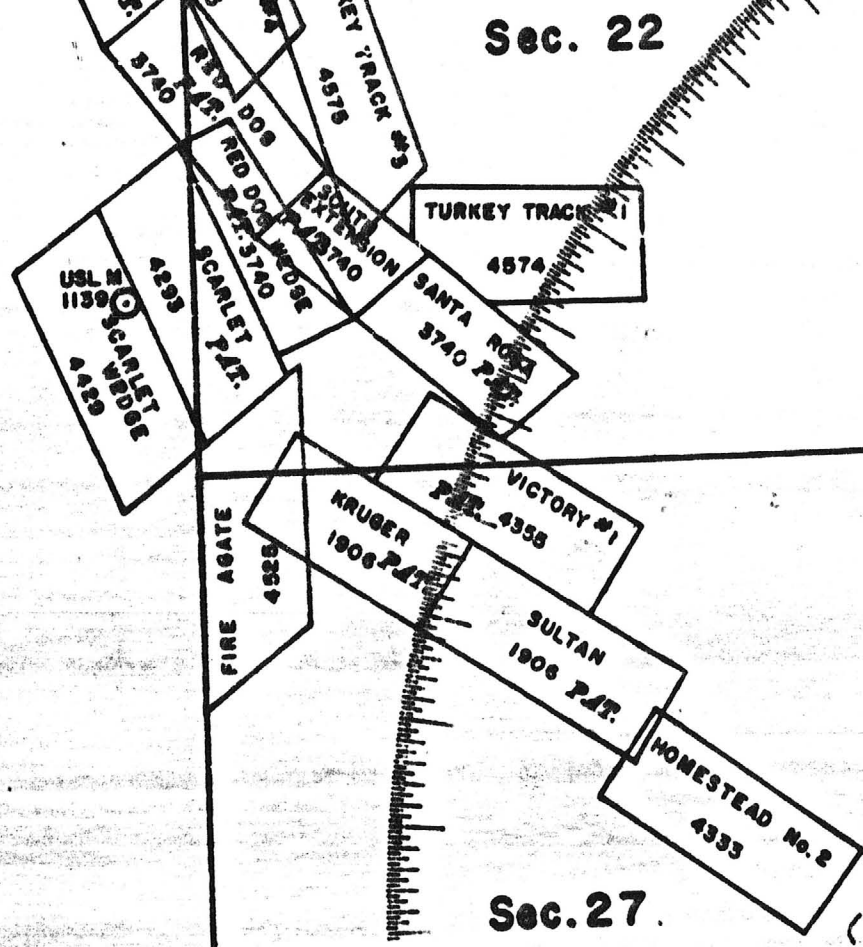


Sec. 21

Sec. 28



Sec. 22



Sec. 27.

USLM 1180
 (From TIE ON P. NOTES 2524, 1/1
 34-35 To COR 4
 CONTENTION 5
 11

NJN WR 1/6/84: Jack Brantl reported that Tim Atkinson is no longer with Cave Creek Mining Co. but is with a new group that has purchased some part of the Union Mine or Webb Group, Maricopa County.

NJN WR 3/9/84: Laksir Napier (c) reported that Sunchief Mines (c) ie the Neslunds have acquired some part of the Webb Group (f) Maricopa County. Perhaps what is known as the Union Group Mine (f).

KAP WR 3/23/84: A visit was amde to the Jack White heap leach operation, Webb Group, Maricopa County. The operation is idle, the electrical utility power meter has been removed and the facilities appear in some disrepair. A sign at the gate contains the name Sarinks Enterprizes Incorporated. In a field inter- view with personal at a neighboring facility at which Tim Atkinson is involved it was learned that Mr. Atkinson is not involved with the Union Mine or the Webb Group.

RRB WR 9/17/82: Ron Linderman of the Jack White Mine, Maricopa County, reports that they have extracted about 70 ounces of gold from 1,000 tons of ore. Although their ore heaps are only about 3 feet deep they are blinding badly because of the high clay content. They have ripped them several times without much improvement. They are continuing column tests and now plan to screen the ore, crushing the oversize and agglomerate the fines. He reports that the BLM and the City are still trying to get rid of them. So far they have spent about \$12,500 on the operation.

+ _____

NJN WR 4/29/83: It was reported that Arie Hilbrand and a partner are operating two 5,000 ton cyanide heap leaches at the Union Mine. Material from dumps and tailings is pelletized and placed on the heaps. Recovery of the precious metal will be via carbon columns and a pressure stripping plant.

KAP WR 5/13/83: Ron Linderman reported that Ted and A. Hilbrands are operating a cyanide heap leach operation at the Union Mine north of Phoenix, Winifred District, Maricopa County.

NJN WR 1/6/84: Jack Brantl reported that Tim Atkinson is no longer with Cave Creek Mining Co. but is with a new group that has purchased some part of the Union Mine or Webb Group, Maricopa County.

NJN WR 3/9/84: Laksir Napier (c) reported that Sunchief Mines (c) ie the Neslunds, have acquired some part of the Webb Group (f) Maricopa County. Perhaps what is known as the Union Group Mine.

NJN WR 6/7/85: Lynn Jensen, Morris Chester Aberglent Associates, 244-8100 ext 36, called to see if we had underground maps of the Union Mine, Winifred District, Maricopa County. They want to rezone the Union, Scarlet, Golden Star, Mary Ann, Red Dog, Red Dog Wedge, South Extension and the Santa Rosa claims claims and were told by the Mine Inspector that they must have underground maps to do so.

INFORMATION FOR FILES

FROM: John H. Jett

DATE: September 12, 1983

Office Visit

Mr. Gabriel Heday
Box 301
Tombstone, Arizona 85638
Ph: 457-3362

Mr. Heday, Independence Mining Company, has been retained by Sunchief Mines to evaluate the Union and Scarlet mines (Maricopa County.) He will de-water the shaft, then do underground sampling.

He is looking for some underground maps he believes D. W) Jaquays made. Mr. Jaquays is out of town until September 20th.

Mr. Heday did some work for Frank Magini at the Robinson Mine. He geologically mapped a square mile of the area and ran a magnetic survey. Extensive sampling was done. He is presently writing his final report. He stated that the present operation is a pilot plant to obtain data.

cc: Tucson office

Handwritten: H of Phoenix

TIMOTHY V. A. DILLON

LAW OFFICES OF
NORTHCUTT ELY
TOWER BUILDING
WASHINGTON 5, D. C.

TELEPHONE
STERLING 9090
—
TELETYPE
WA 245

Union Mine file

*Handwritten: Dear Mr. Busch
March 20, 1948
J. E. Busch - P 99*

March 20, 1948

Mr. J. E. Busch
C/o Chas. H. Dunning,
Director
Department of Mineral Resources
Mineral Building, Fair Grounds,
Phoenix, Arizona.

Dear Mr. Busch:

Ineed I do remember you well; I remember the honesty and courage and intelligence you displayed when it became your duty to make it clear to your superiors in the Department that my property--the Union Mine group--was in reality mineral ground and not subject to homestead entry. I have always appreciated deeply the things you then did--though it was in the line of duty. Many other men in your position would have taken the popular side and joined the homesteaders. (Of course they have long since folded up).

Some two years ago I patented the Scarlet claim and sold it, along with the patented Union claim and two unpatented claims, to ~~Mr.~~ C. E. Mills of Phoenix, whose address you can find in the phone book.

I'm sorry I can't give you any worth-while information beyond this; I have no data about the other claims, except the Jack White, which I don't think was ever patented. Some years ago a mining journal was published at Phoenix. If you can find the editor of that periodical, he could give you more information than anybody I can think of. I hope your health continues to improve. Kindest regards.

Subcerely,

Sims Ely

Handwritten: University Club

Shaff @ union mine on Leo N°3 shown on map in Webb group

FAIRGROUNDS,
MARCH 19, 1948.

Dear Mr. Barney:-

I wonder could you help on the matter mentioned in attached copy of letter to Mr. Ely ?

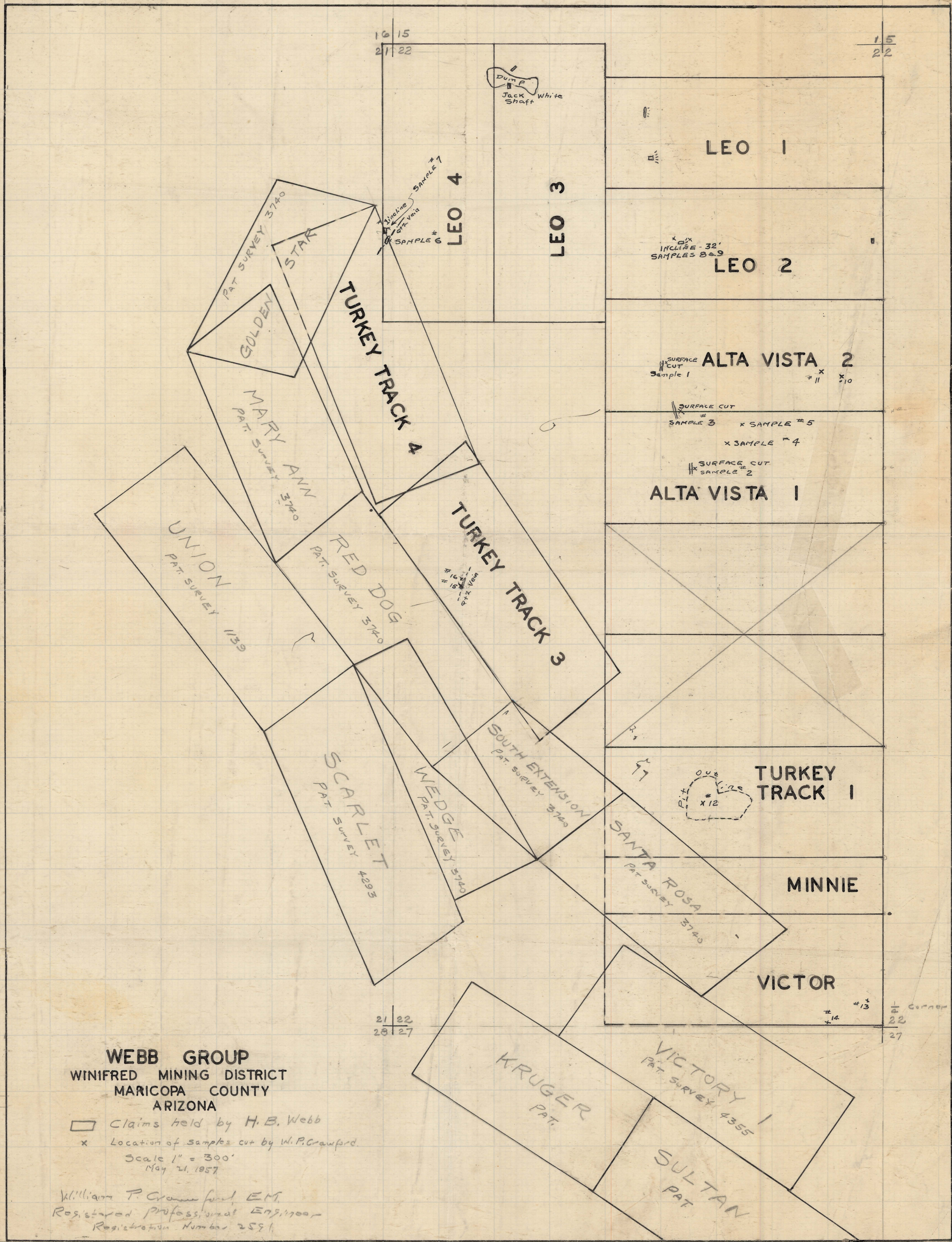
I recall you have a good knowledge of the early-day history of this region, and both Mr. Dunning and myself would appreciate any information or suggestions.

With regards,

Cordially,

J. E. Busch.

our phone is 4-7034.



WEBB GROUP
 WINIFRED MINING DISTRICT
 MARICOPA COUNTY
 ARIZONA

□ Claims held by H. B. Webb
 x Location of samples cut by W. P. Crawford
 Scale 1" = 300'
 May 21, 1957

William P. Crawford, E.M.
 Registered Professional Engineer
 Registration Number 2591

