



CONTACT INFORMATION

Mining Records Curator
Arizona Geological Survey
1520 West Adams St.
Phoenix, AZ 85007
602-771-1601
<http://www.azgs.az.gov>
inquiries@azgs.az.gov

The following file is part of the

Arizona Department of Mines and Mineral Resources Mining Collection

ACCESS STATEMENT

These digitized collections are accessible for purposes of education and research. We have indicated what we know about copyright and rights of privacy, publicity, or trademark. Due to the nature of archival collections, we are not always able to identify this information. We are eager to hear from any rights owners, so that we may obtain accurate information. Upon request, we will remove material from public view while we address a rights issue.

CONSTRAINTS STATEMENT

The Arizona Geological Survey does not claim to control all rights for all materials in its collection. These rights include, but are not limited to: copyright, privacy rights, and cultural protection rights. The User hereby assumes all responsibility for obtaining any rights to use the material in excess of "fair use."

The Survey makes no intellectual property claims to the products created by individual authors in the manuscript collections, except when the author deeded those rights to the Survey or when those authors were employed by the State of Arizona and created intellectual products as a function of their official duties. The Survey does maintain property rights to the physical and digital representations of the works.

QUALITY STATEMENT

The Arizona Geological Survey is not responsible for the accuracy of the records, information, or opinions that may be contained in the files. The Survey collects, catalogs, and archives data on mineral properties regardless of its views of the veracity or accuracy of those data.

ARIZONA DEPARTMENT OF MINES AND MINERAL RESOURCES AZMILS DATA

PRIMARY NAME: UNCLE SAM

ALTERNATE NAMES:

BLACK CHIEF
BLACK WARRIOR PROSPECT
BLACK CHIEF COPPER

YAVAPAI COUNTY MILS NUMBER: 643

LOCATION: TOWNSHIP 14 N RANGE 2 E SECTION 11 QUARTER SE
LATITUDE: N 34DEG 36MIN 14SEC LONGITUDE: W 112DEG 07MIN 12SEC
TOPO MAP NAME: CHERRY - 7.5 MIN

CURRENT STATUS: PAST PRODUCER

COMMODITY:

IRON MAGNETITE
IRON HEMATITE
MANGANESE
SILICON
COPPER
TITANIUM ILMENITE

BIBLIOGRAPHY:

USGS CHERRY QUAD
HARRER, C.M. RECON OF IRON RES. IN AZ USBM
IC 8236 1964 P 63, 96 & 99
ADMMR UNCLE SAM FILE
USGS BULL. 782, P. 101

REPORT IN "ENGINEERS" FILE

ON R. F. C. LOANS

OCT. 7, 1942

BLACK CHIEF COPPER MINE

REFERENCES

YAVAPAI COUNTY
BLACK HILLS DIST
T14N R2E Sec. 11 SE

Yavapai County MILS Index #643

AKA: Uncle Sam, Black Warrior, Black Chief

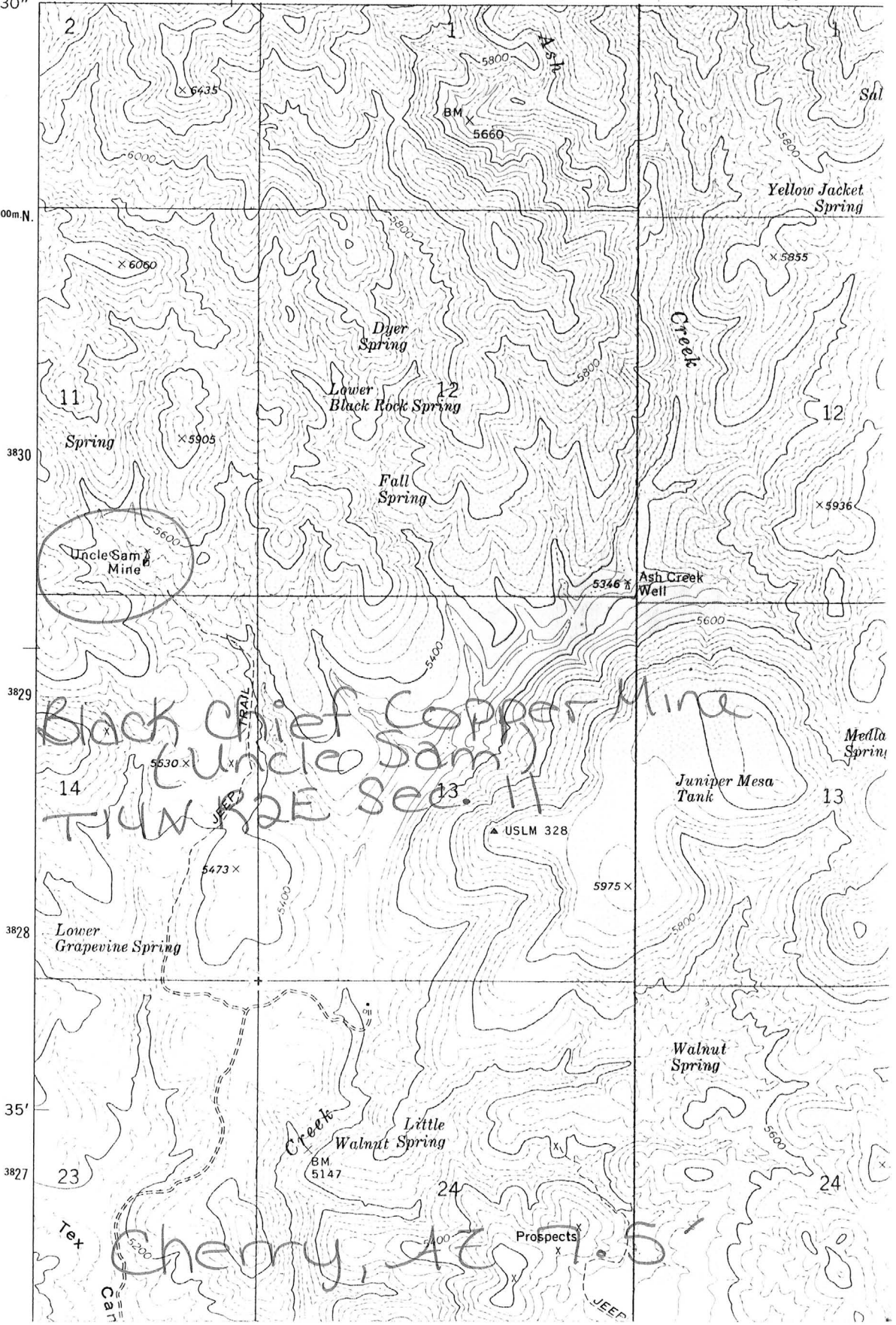
IC 8236, p. 99, 63, and 96

Cherry, AZ 7.5' Topo (included in file)

3553 (1 NW JOCKEY MOUNTAIN)

UNITED STATES
DEPARTMENT OF THE INTERIOR
GEOLOGICAL SURVEY

112°07'30" 398000m.E. 399 R 2 E R 2 1/2 E 400
34°37'30" 3831000m.N.



2 1 1
6435 5800 5660 5800
6000 5800 5600
6060 5905 5936
Dyer Spring
Lower Black Rock Spring
Fall Spring
Spring
Uncle Sam Mine
Ash Creek Well
5346
5600
3830
3829
Black Chief Copper Mine
(Uncle Sam)
TRIM R2E Sec. 11
5530
5473
USLM 328
5975
5800
3828
Lower Grapevine Spring
Juniper Mesa Tank
Medla Spring
13
Walnut Spring
Little Walnut Spring
BM 5147
35' 24 24
3827
23 24
Tex
Cherry, A.C. 1.5
Prospects
JEEP
CART

BLACK CHIEF COPPER

Cu

Yavapai

13 - 5

T 14 N, R 2 E

Anthony Cole

1942

OWNER

COLE, Anthony, *Box 683, Salome*

BLACK CHIEF COPPER MINE
8-15-1942

Percy E. Wright, Consulting Eng.
P. O. Box 2283
Phoenix, Arizona

"C" Loan -- No M.O.R.

Wright, Percy E.
P. O. Box 2283-*cb*
Phoenix, Arizona

8-15-42

See Black Chief Copper Mine (Owner-Anthony Cole)
Re - Pre. Dev. Loan

COPPER

Anthony Cole

BLACK CHIEF COPPER MINE
Yavapai County

9-44

\$5,000 RFC loan

SEE R.F.C. LOAN APPLICATION
IN
"ENGINEERS" FILE ON LOANS

BLACK CHIEF COPPER MINE

Oct. 7, 1942

BLACK HILLS MINING DISTRICT

YAVAPAI COUNTY, ARIZONA

OWNER: Anthony Cole,
Percy E. Wright, Consulting Engineer
P. O. Box 2283, Phoenix, Ariz.

July 7, 1955

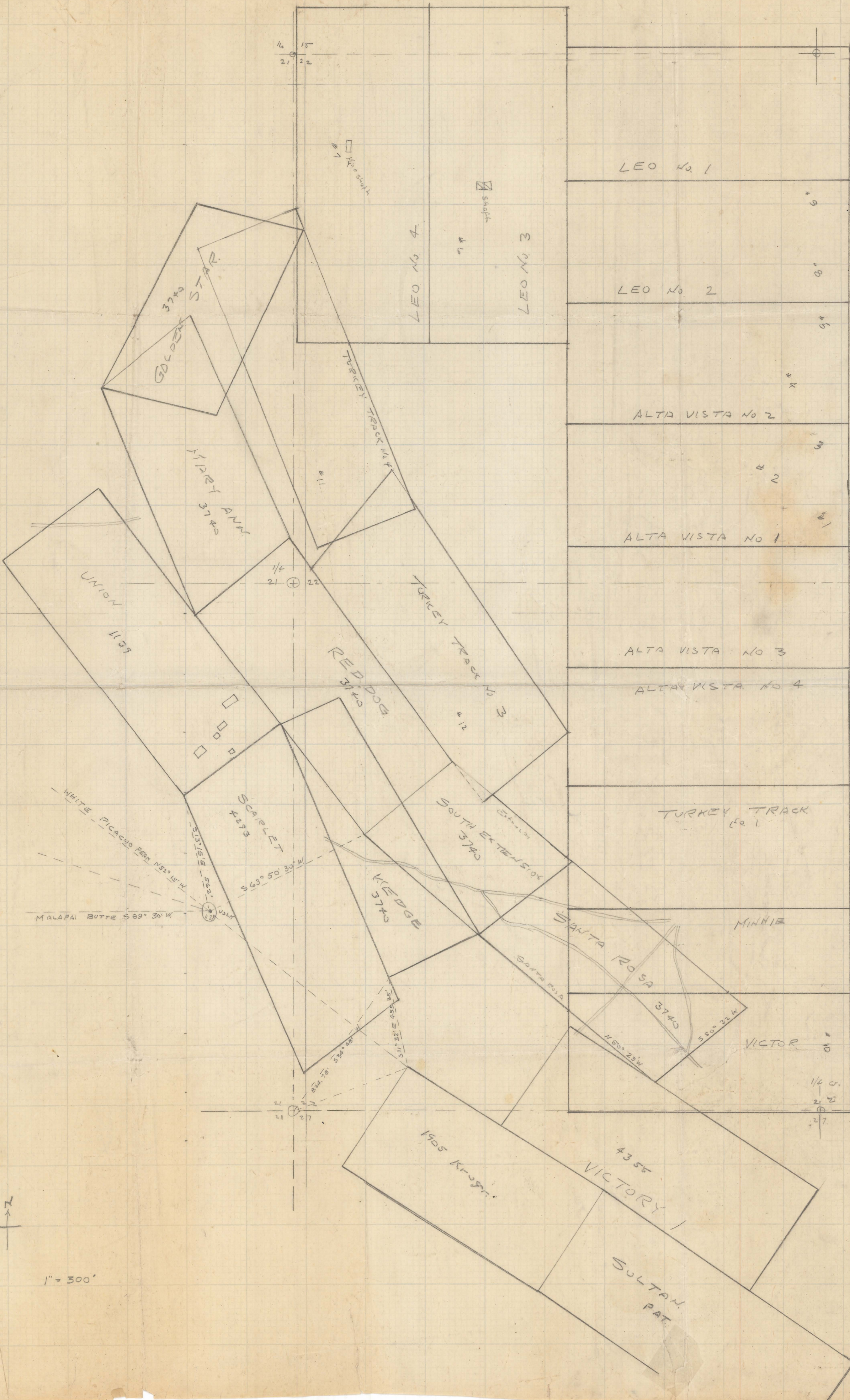
BLACK CHIEF COPPER MINE

Anthony Cole has not been seen here

for some time and may have died. The claims may
have been relocated.

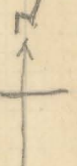
MARK GEMMILL

1/4 21 22



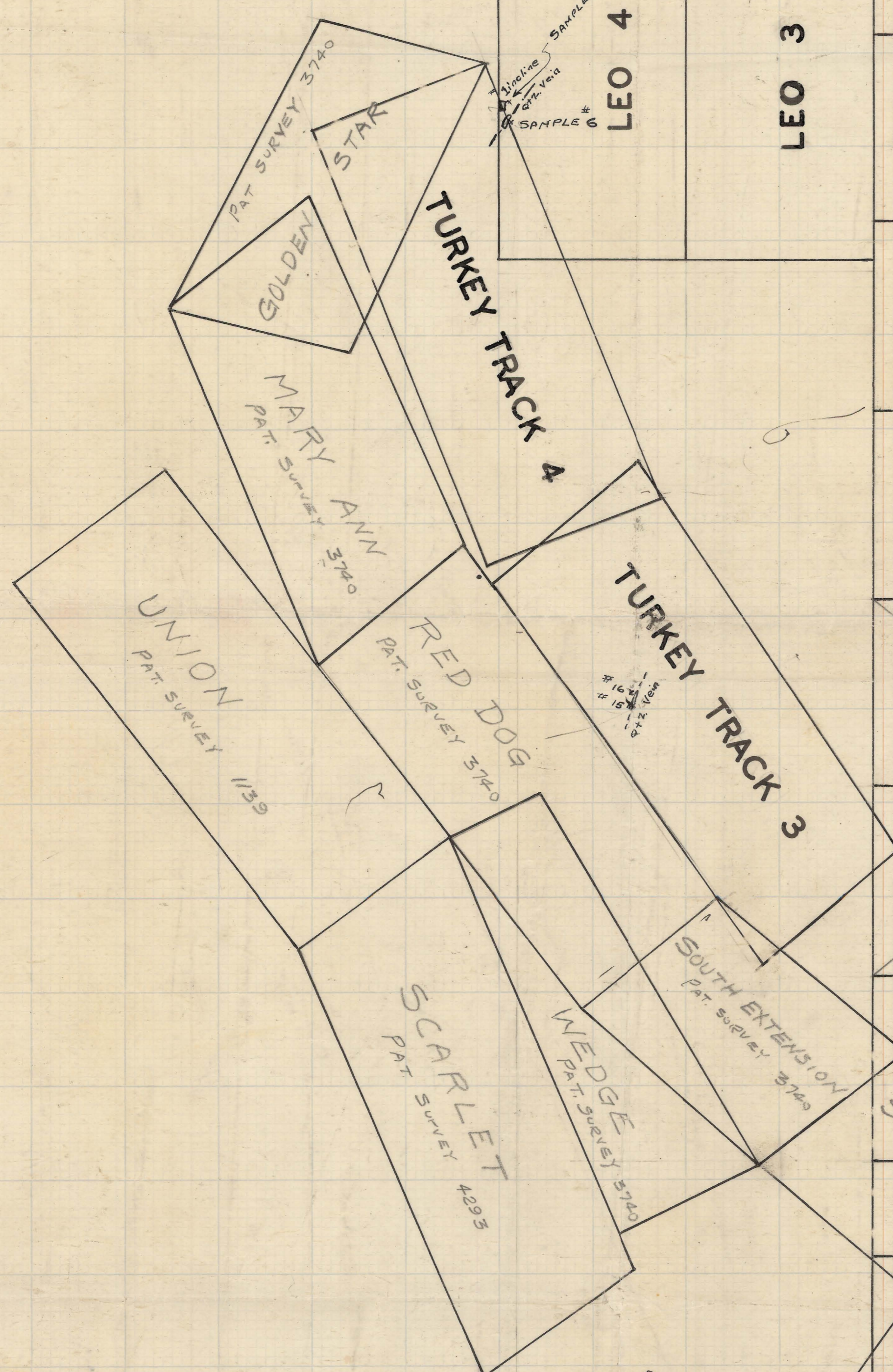
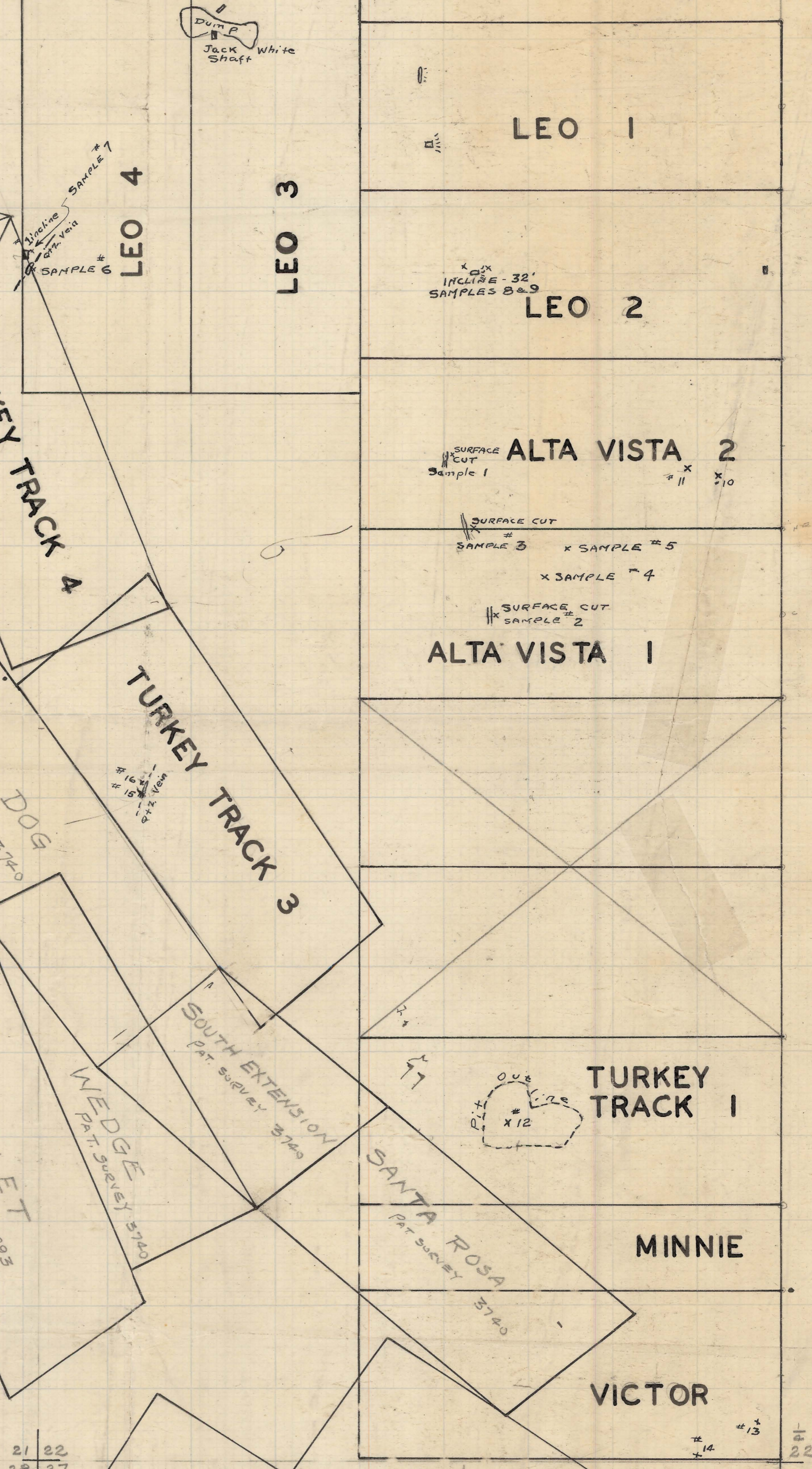
Section 22, T 4 N, R 3 E.

1" = 300'



16 15
21 22

15
22



WEBB GROUP
WINIFRED MINING DISTRICT
MARICOPA COUNTY
ARIZONA

□ Claims held by H. B. Webb
 x Location of samples cut by W. P. Crawford
 Scale 1" = 300'
 May 21, 1957

William P. Crawford, E.M.
 Registered Professional Engineer
 Registration Number 2551

21 22
28 27

22
27
at corner

