



CONTACT INFORMATION

Mining Records Curator
Arizona Geological Survey
1520 West Adams St.
Phoenix, AZ 85007
602-771-1601
<http://www.azgs.az.gov>
inquiries@azgs.az.gov

The following file is part of the

Arizona Department of Mines and Mineral Resources Mining Collection

ACCESS STATEMENT

These digitized collections are accessible for purposes of education and research. We have indicated what we know about copyright and rights of privacy, publicity, or trademark. Due to the nature of archival collections, we are not always able to identify this information. We are eager to hear from any rights owners, so that we may obtain accurate information. Upon request, we will remove material from public view while we address a rights issue.

CONSTRAINTS STATEMENT

The Arizona Geological Survey does not claim to control all rights for all materials in its collection. These rights include, but are not limited to: copyright, privacy rights, and cultural protection rights. The User hereby assumes all responsibility for obtaining any rights to use the material in excess of "fair use."

The Survey makes no intellectual property claims to the products created by individual authors in the manuscript collections, except when the author deeded those rights to the Survey or when those authors were employed by the State of Arizona and created intellectual products as a function of their official duties. The Survey does maintain property rights to the physical and digital representations of the works.

QUALITY STATEMENT

The Arizona Geological Survey is not responsible for the accuracy of the records, information, or opinions that may be contained in the files. The Survey collects, catalogs, and archives data on mineral properties regardless of its views of the veracity or accuracy of those data.

PRINTED: 09/05/2002

ARIZONA DEPARTMENT OF MINES AND MINERAL RESOURCES AZMILS DATA

PRIMARY NAME: TUTTLE HEAP LEACH

ALTERNATE NAMES:

YUMA COUNTY MILS NUMBER: 779

LOCATION: TOWNSHIP 8 S RANGE 21 W SECTION 3 QUARTER N2
LATITUDE: N 32DEG 46MIN 10SEC LONGITUDE: W 114DEG 24MIN 20SEC
TOPO MAP NAME: LAGUNA DAM - 7.5 MIN

CURRENT STATUS: UNKNOWN

COMMODITY:

GOLD LODE

GOLD PLACER

BIBLIOGRAPHY:

ADMMR TUTTLE HEAP LEACH FILE

TUTTLE HEAP LEACH

YUMA COUNTY
T8S R21W Sec 3

KAP WR 10/5/84: A visit was made to the Tuttle Heap Leach (file) Yuma Co. site along U.S. Highway 95. A trailer which appears to be housing for a caretaker has been added since previous visit. Otherwise, there has been no significant sign of activity since the previous visit. C.F. Miller of Chemgold drilled two exploration holes at the property.

ARIZONA DEPARTMENT OF MINE RESOURCES

Mineral Building, Fairgrounds

Phoenix, Arizona

MILS # 779

1. Information from: Field visit and Mr. Tuttle
Address: Tuttle Mines, 4770 Hiway 95, Yuma, Arizona

2. Mine: Tuttle Heap Leach 3. No. of Claims - Patented _____
Unpatented 25 (Tuttle #1-25)

4. Location: See Attached map

5. Sec _____ Tp _____ Range _____ 6. Mining District _____

7. Owner: Tuttle Mines

8. Address: 4770 Hiway 95, Yuma, Arizona

9. Operating Co.: same

10. Address: _____

11. President: _____ 12. Gen. Mgr.: _____

13. Principal Metals: Gold - reportedly 14. No. Employed: _____

→ 15. Mill, Type & Capacity: CYANIDE HEAP LEACH

16. Present Operations: (a) Down (b) Assessment work (c) Exploration
(d) Production (e) Rate _____ tpd.

17. New Work Planned: Agglomeration of present heap is planned

18. Misc. Notes: Cyanide heap leach operation using carbon adsorption.

Heap size 100' x 25' x 5'. PVC solution distribution system has

deteriorated. Zinc precipitation was tried unsuccessfully. No recovery

with carbon either. Heap will not percolate.

Heap material is bank run alluvial material from sight 1/2 mile from

leach plant (see map). Heap material is mostly dirt, silt and cobbles.

A small screen plant from which the undersize is fed to an aynley

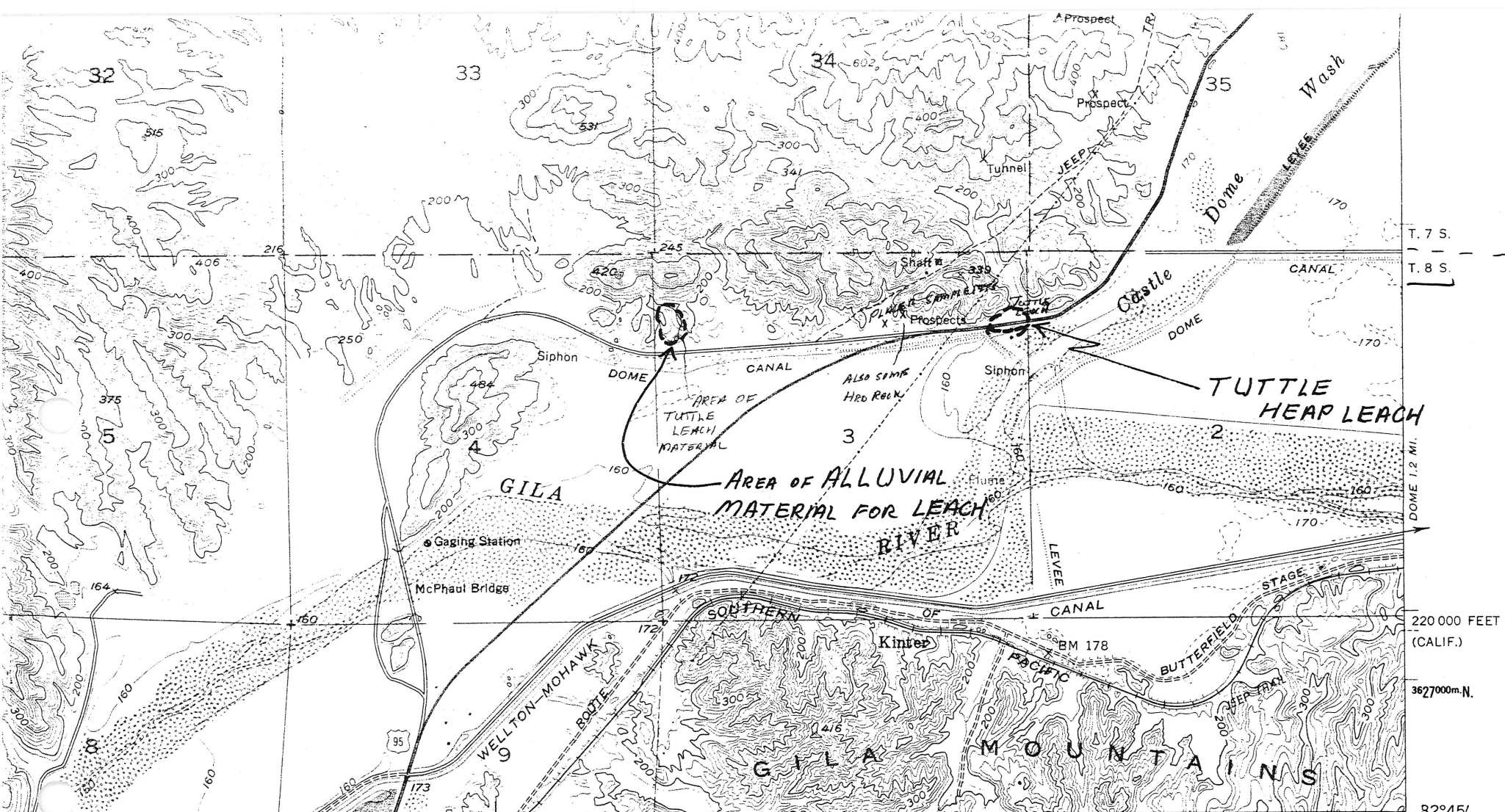
bowl has also been used at the property.

Date: May 6, 1982

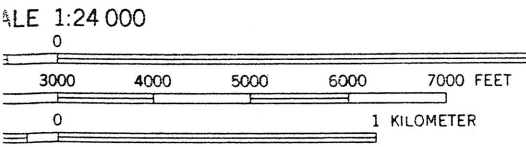
(Signature)

Ken A. Phillips

(Field Engineer)

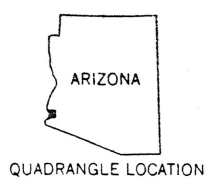


(FORTUNA) 3149 III NW
 BLAISDELL 3.2 MI.
 14 MI. TO INTERSTATE 8

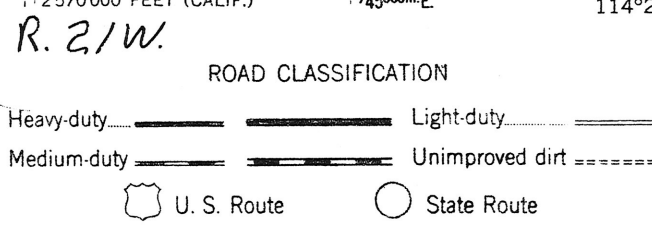


INTERVAL 20 FEET
 PRESENT 10-FOOT CONTOURS
 MEAN SEA LEVEL DATUM OF 1929

NATIONAL MAP ACCURACY STANDARDS
 DENVER, COLORADO 80225, OR RESTON, VIRGINIA 22092
 MAPS AND SYMBOLS IS AVAILABLE ON REQUEST



INTERIOR—GEOLOGICAL SURVEY, RESTON, VIRGINIA—1979
 2570 000 FEET (CALIF.) 745000m.E. 114°22'30"



LAGUNA DAM, ARIZ.—CALIF.
 SW/4 LAGUNA 15' QUADRANGLE
 N 3245—W 11422.5/7.5

1955

Truck
Loader

Hammer Screen

Glenn & Suttle

Neway 95 - near

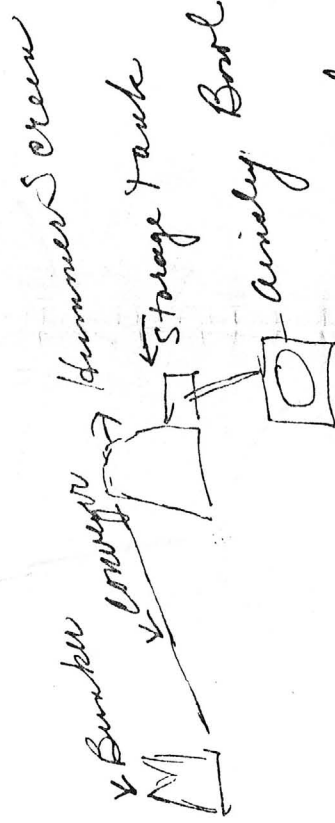
W^c Falls Bridge

15-16 mile N of game

west side

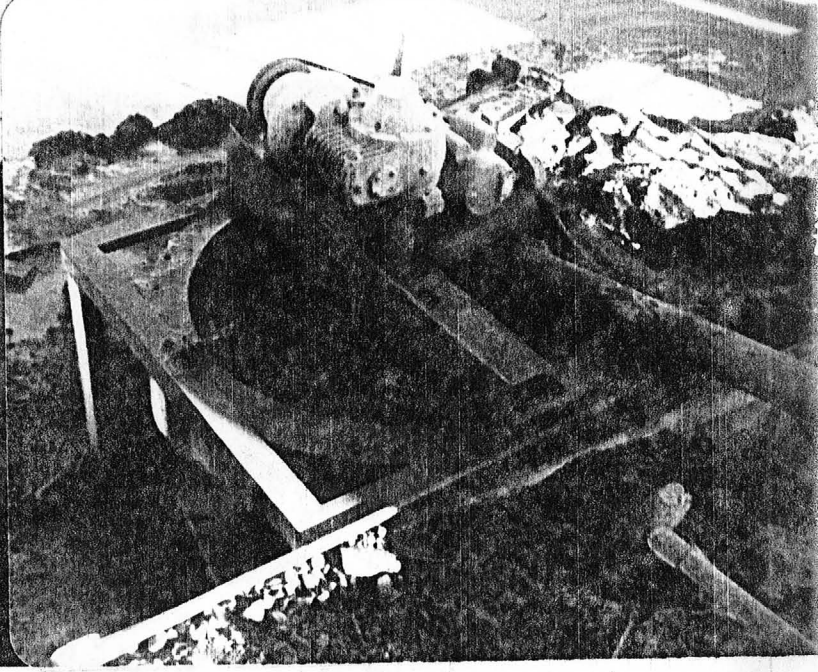
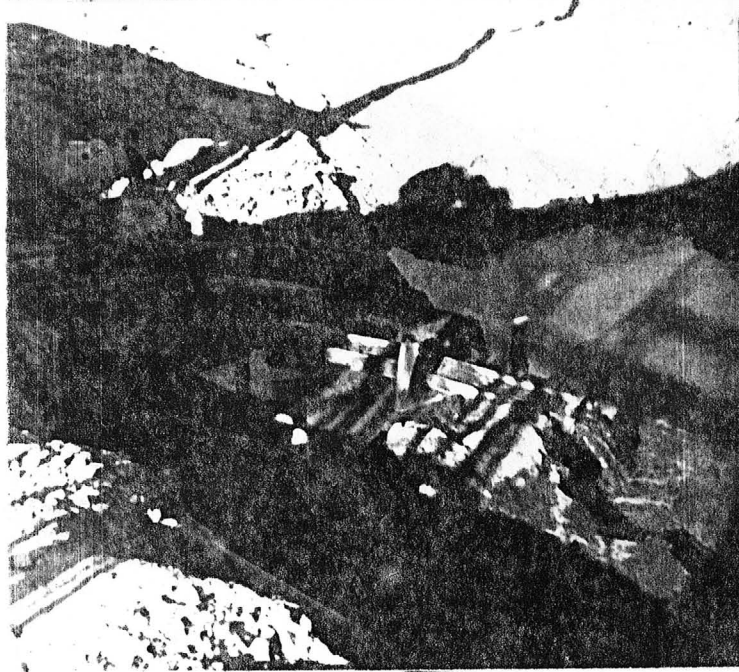
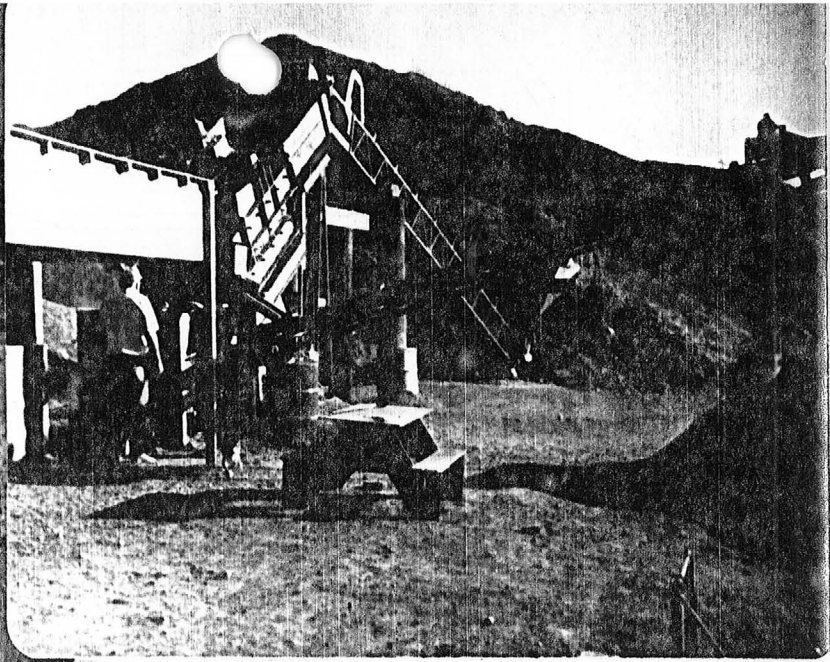
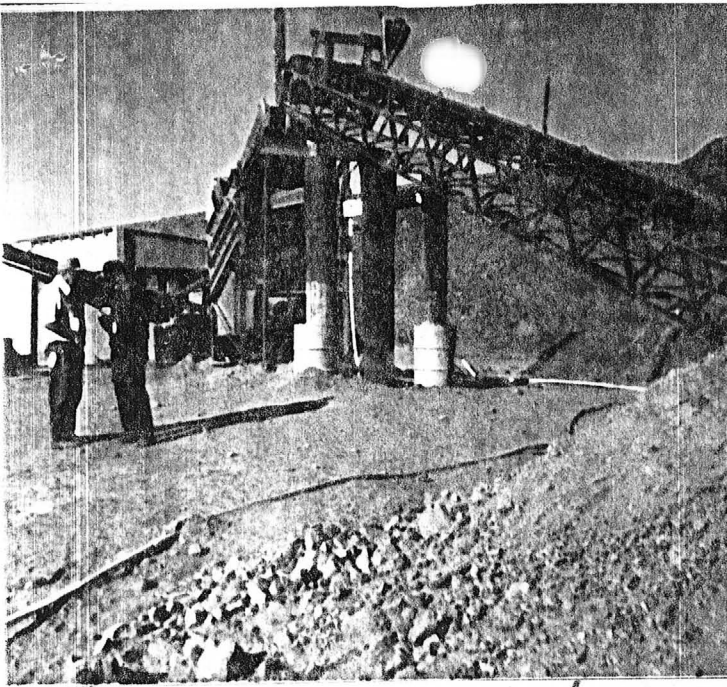
meath from highway

from 1982
from 1982
from 1982



Need classifier for concentrates
out of Bowl.

Hand Panning now



Raw
Sailing

