



CONTACT INFORMATION

Mining Records Curator
Arizona Geological Survey
1520 West Adams St.
Phoenix, AZ 85007
602-771-1601
<http://www.azgs.az.gov>
inquiries@azgs.az.gov

The following file is part of the

Arizona Department of Mines and Mineral Resources Mining Collection

ACCESS STATEMENT

These digitized collections are accessible for purposes of education and research. We have indicated what we know about copyright and rights of privacy, publicity, or trademark. Due to the nature of archival collections, we are not always able to identify this information. We are eager to hear from any rights owners, so that we may obtain accurate information. Upon request, we will remove material from public view while we address a rights issue.

CONSTRAINTS STATEMENT

The Arizona Geological Survey does not claim to control all rights for all materials in its collection. These rights include, but are not limited to: copyright, privacy rights, and cultural protection rights. The User hereby assumes all responsibility for obtaining any rights to use the material in excess of "fair use."

The Survey makes no intellectual property claims to the products created by individual authors in the manuscript collections, except when the author deeded those rights to the Survey or when those authors were employed by the State of Arizona and created intellectual products as a function of their official duties. The Survey does maintain property rights to the physical and digital representations of the works.

QUALITY STATEMENT

The Arizona Geological Survey is not responsible for the accuracy of the records, information, or opinions that may be contained in the files. The Survey collects, catalogs, and archives data on mineral properties regardless of its views of the veracity or accuracy of those data.

PRINTED: 09/05/2002

ARIZONA DEPARTMENT OF MINES AND MINERAL RESOURCES AZMILS DATA

PRIMARY NAME: TURKEY HOLE

ALTERNATE NAMES:
RT # 13

PIMA COUNTY MILS NUMBER: 1154

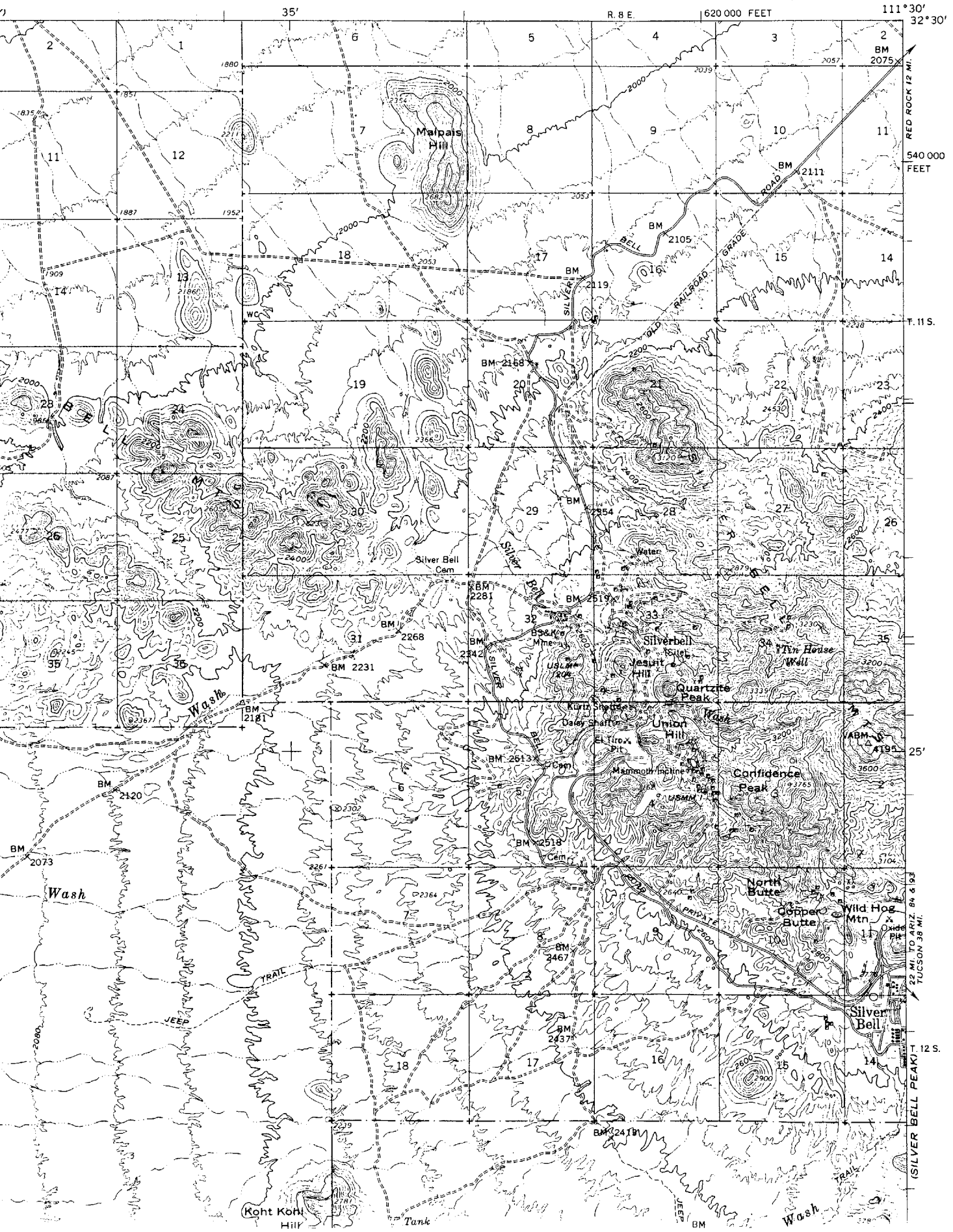
LOCATION: TOWNSHIP 11 S RANGE 8 E SECTION 21 QUARTER S2
LATITUDE: N 32DEG 27MIN 05SEC LONGITUDE: W 111DEG 32MIN 00SEC
TOPO MAP NAME: VACA HILLS - 15 MIN

CURRENT STATUS: EXP PROSPECT

COMMODITY:
SILVER
LEAD
ZINC
COPPER

BIBLIOGRAPHY:
ADMMR TURKEY HOLE FILE

(RED ROCK)



RED ROCK 12 MI.
540 000
FEET

(SILVER BELL PEAK) T. 12 S.
22 MI. TO ARIZ. 84 & 193
TUCSON 38 MI.

TURKEY HOLE

PIMA COUNTY

HM WR 3/4/88: In the company of Mr. Harold Leeman, the Turkey Hole Mine (file) Pima County was examined and sampled. An engineer's field report is appended. The owner was assisted in collecting representative samples of the mineralization and was advised on the economic geology of the site. Based on the information provided, Mr. Leeman plans to locate an additional claim to the northeast to better cover the mineralization. This is a new MILS occurrence.

ENGINEER'S FIELD REPORT

MINE: Turkey Hole (file)
DISTRICT: Silver Bell
COUNTY: Pima
LOCATION: T22S,R8E,Sec.21 S½C, G&SR BM
MAP: Vaca Hills 15 Min

ENGINEER: Harrison Matson
DATE: February 29, 1988

SUBJECT: Mine Examination

ACCESS: The workings are reached by 1/2 mile of jeep trail access, east from Silver Bell - Redrock road which is county graded.

OWNERSHIP: Harold V. Leeman, Sasabe Star Rt, Box 50, Tucson, AZ 85736 is the current owner of one unpatented mining claim named Ragged Top #13, located on BLM managed land. The claim runs in an E-W direction and encompasses the old workings.

PAST PRODUCTION: Unknown - possibly a few tons of lead-zinc-copper-silver ore.

CURRENT STATUS: Currently inactive, exploration prospect.

DEVELOPMENT: Two adits and one shaft.

ECONOMIC GEOLOGY: Lowest adit was-driven in a S65E direction for approximately 100 feet in steeply bedded and fractured dark grey silic-volcanic flow rock (latite?). Little mineralization was observed but for efflorescences along fractures. This development comes several hundred feet short of being under the other workings.

The middle adit curves to the east with a general course of S50E in volcaniclastic flow banded rock and ends when a series of stringer veins is encountered perhaps 150 feet from the portal. One 2-4 inch vein strikes N5E & dips steeply W. to vertical near the face and offsets another 1" N80W 55°N stringer. The veinlets appear to host abundant smithsonite with quartz & white clay gangue. Chlorite is abundant in the wall rock. This development does not appear to extend below the uppermost workings.

A 100 feet deep 4 X 6 foot shaft with a drift at the ~40 foot level is the upper development. The top ladder has been removed & the shaft covered with chain link to keep people out since the death of a weekend explorer there in 1984. A map of the 40 foot level is attached. Water was standing near the 70 foot level at the time of the examination. The best mineralization observed at the prospect is exposed on the 40 foot level where a triple vein intersection develops an inverted trough shaped ore shoot which trends N45E and plunges about 20 degrees north. The shoot is cut by N50W post mineral faulting which dips to the NE at 75 to 55 degrees. One of the three veins diverges to the NE but the effect on the mineralization is not determined by additional drifting. As exposed the veining is from 4 to 6 feet wide. Ore minerals observed are galena, smithsonite, chalcocite, some chalcantite and chalcopyrite with quartz, calcite and mixed pyrite limonite gangue in moderately argillicly altered wall rock, probably a welded rhyolitic ash flow tuff.

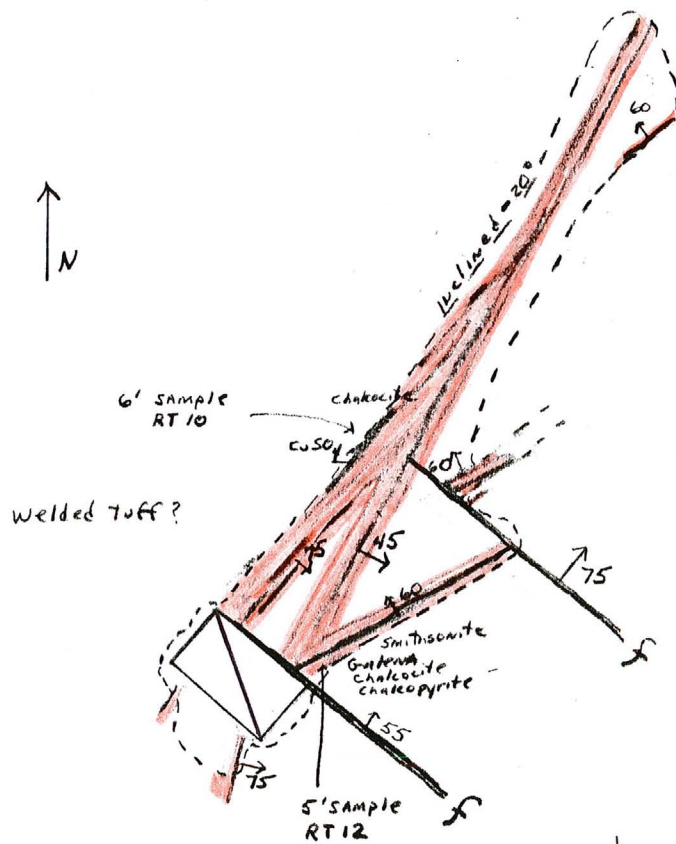
SAMPLING: Two samples were collected at the 40 foot level and given to Mr. Leeman to take in for assay. #RT10 was collected over a six foot interval,

Engineer Field Report - February 29, 1988
Harrison Matson
continued

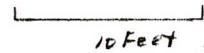
SAMPLING: (cont)

as plotted on the map, across the drift back, testing the N40 & 30E veins.

Sample #RT12 was collected on the hanging wall of the intersection, sampling 5 feet of the N60E vein. Results of analysis will be appended upon receipt.

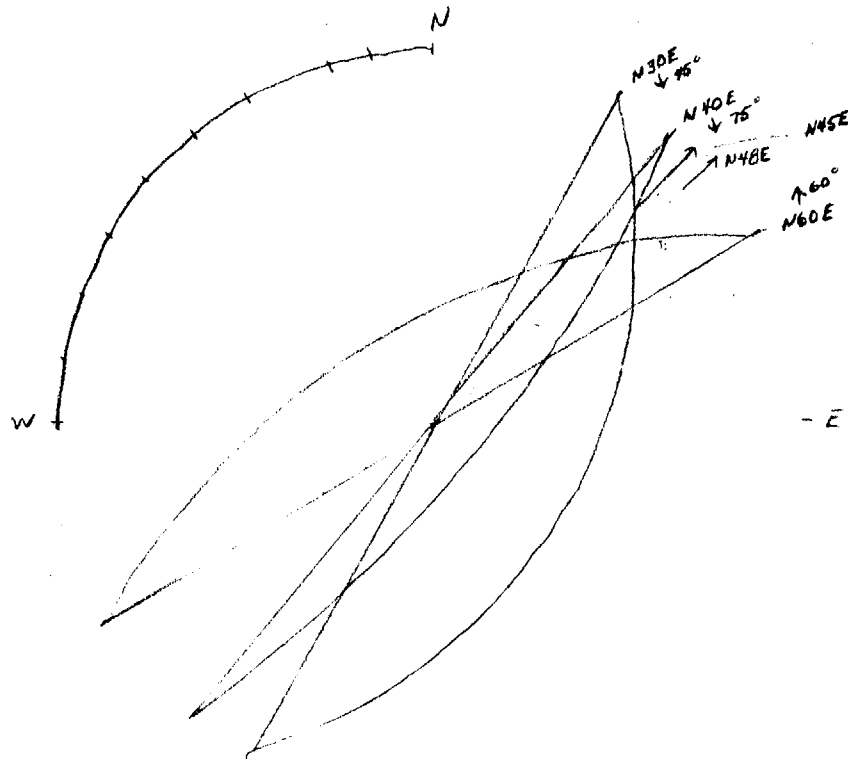


~40' level
 Turkey Hole Mine
 Silver Bell Dist.
 Pima Co AZ
 2/29/88 HEM



Estimated distances

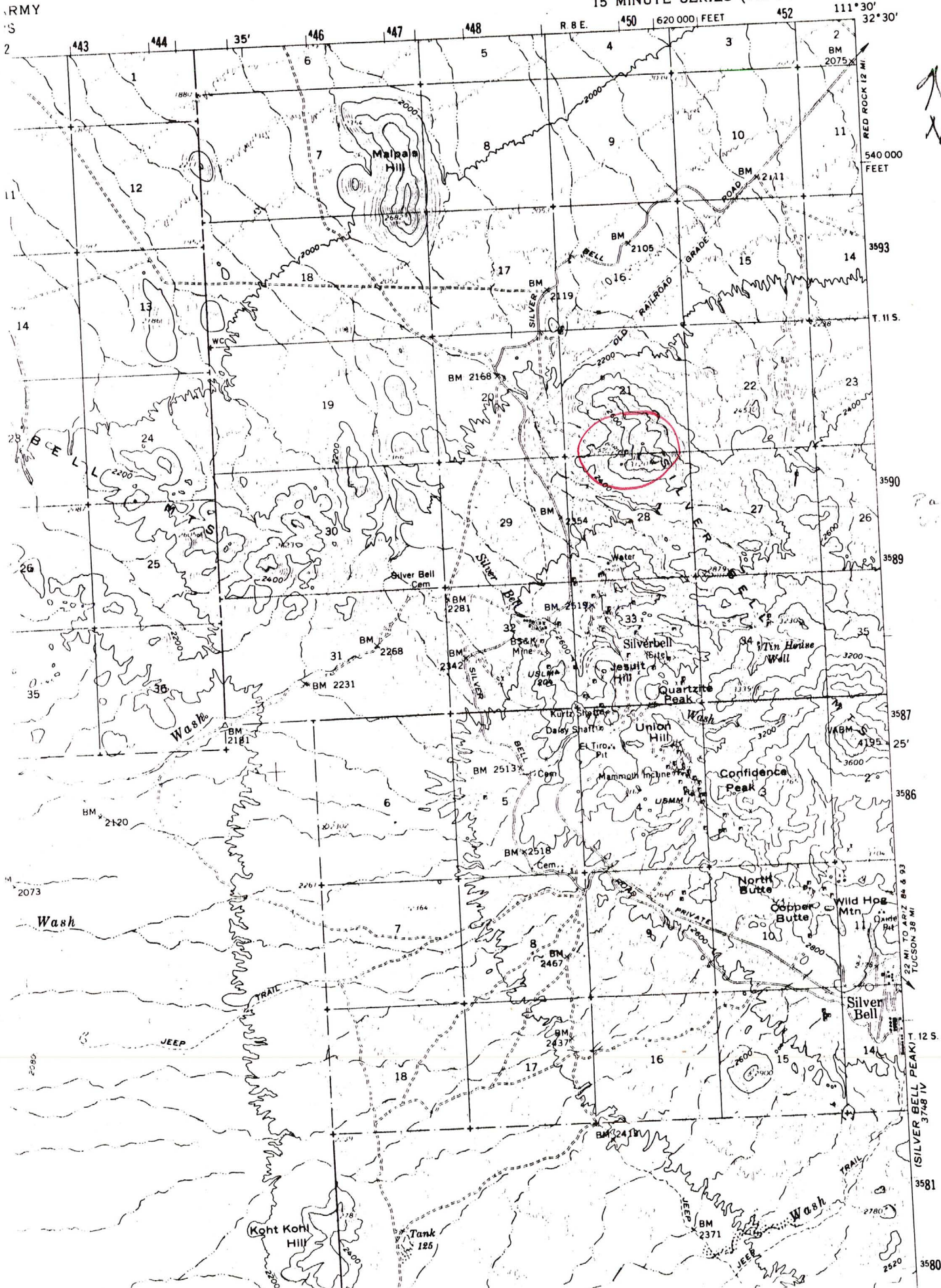
BY HEM DATE 3/10/88 SUBJECT Turkey Hole Mink SHEET NO. 1 OF 1
 CHKD. BY _____ DATE _____ Stereonet plot of 3 veins JOB NO. _____
 _____ at 40' level _____



Plunge $14^{\circ}18'$ N45+8E
 rake of N60E vein
 on N30E vein $\approx 25^{\circ}$
 rake of N30E vein
 on plane of N40E $\approx 15^{\circ}$

VAC. HILLS QUADRANGLE
ARIZONA-PIMA CO.
15 MINUTE SERIES (TOPOGRAPHIC)

3749 III
(RED ROCK)



Part

22 MI TO ARIZ 84 & 93
TUCSON 36 MI

(SILVER BELL PEAK) 12 S.

3581
3580