



CONTACT INFORMATION

Mining Records Curator
Arizona Geological Survey
1520 West Adams St.
Phoenix, AZ 85007
602-771-1601
<http://www.azgs.az.gov>
inquiries@azgs.az.gov

The following file is part of the

Arizona Department of Mines and Mineral Resources Mining Collection

ACCESS STATEMENT

These digitized collections are accessible for purposes of education and research. We have indicated what we know about copyright and rights of privacy, publicity, or trademark. Due to the nature of archival collections, we are not always able to identify this information. We are eager to hear from any rights owners, so that we may obtain accurate information. Upon request, we will remove material from public view while we address a rights issue.

CONSTRAINTS STATEMENT

The Arizona Geological Survey does not claim to control all rights for all materials in its collection. These rights include, but are not limited to: copyright, privacy rights, and cultural protection rights. The User hereby assumes all responsibility for obtaining any rights to use the material in excess of "fair use."

The Survey makes no intellectual property claims to the products created by individual authors in the manuscript collections, except when the author deeded those rights to the Survey or when those authors were employed by the State of Arizona and created intellectual products as a function of their official duties. The Survey does maintain property rights to the physical and digital representations of the works.

QUALITY STATEMENT

The Arizona Geological Survey is not responsible for the accuracy of the records, information, or opinions that may be contained in the files. The Survey collects, catalogs, and archives data on mineral properties regardless of its views of the veracity or accuracy of those data.

PRINTED: 09/05/2002

ARIZONA DEPARTMENT OF MINES AND MINERAL RESOURCES AZMILS DATA

PRIMARY NAME: TRIPLE M GROUP

ALTERNATE NAMES:

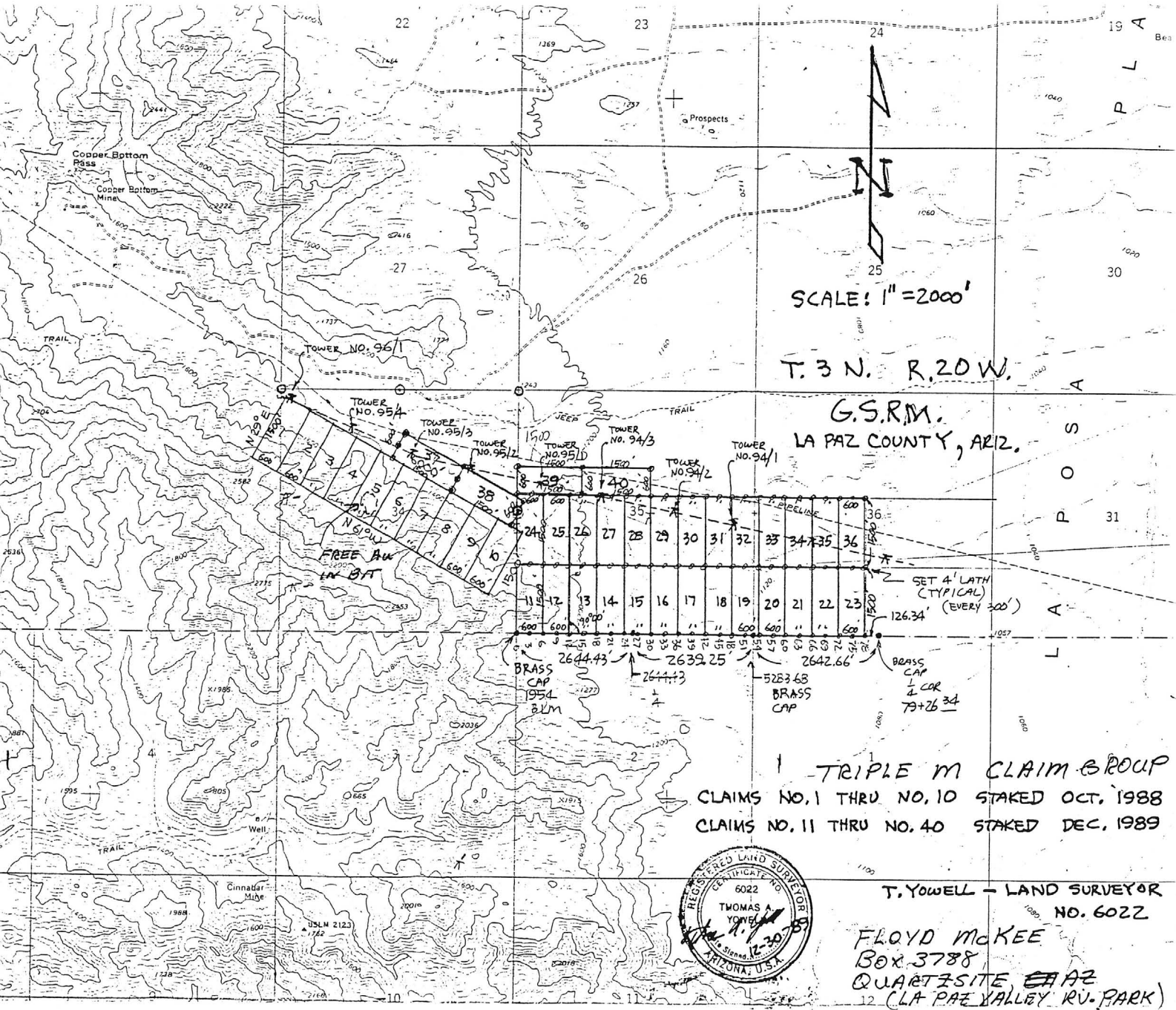
LA PAZ COUNTY MILS NUMBER: 828

LOCATION: TOWNSHIP 3 N RANGE 20 W SECTION 34 QUARTER C
LATITUDE: N 33DEG 33MIN 32SEC LONGITUDE: W 114DEG 18MIN 50SEC
TOPO MAP NAME: CUNNINGHAM MTN - 7.5 MIN

CURRENT STATUS: EXP PROSPECT

COMMODITY:
GOLD

BIBLIOGRAPHY:
ADMMR TRIPLE M GROUP FILE
CLAIMS EXTEND INTO SECTS 35, 36



SCALE: 1" = 2000'

T. 3 N. R. 20 W.

G.S.R.M.
LA PAZ COUNTY, ARIZ.

FREE AN IN BIT

SET 4' LATH (TYPICAL) (EVERY 300')

BRASS CAP 1954 BLM
2644.43
2644.73
2632.25
5283.68 BRASS CAP
2642.66
BRASS CAP 1 COR 79+26.34

TRIPLE M CLAIM GROUP
CLAIMS NO. 1 THRU NO. 10 STAKED OCT. 1988
CLAIMS NO. 11 THRU NO. 40 STAKED DEC. 1989



T. Yowell - LAND SURVEYOR NO. 6022

FLOYD McKEE
Box 3788
QUARTZSITE AZ
12 (LA PAZ VALLEY RV. PARK)

ARIZONA DEPARTMENT OF MINES AND MINERAL RESOURCES

VERBAL INFORMATION SUMMARY

1. Information from: Floyd McKee
2. Address: P. O. Box 3788, Quartzsite, AZ 85359
3. Phone:
4. Mine or property name: Triple M
5. ADMMR Mine file:
6. County: La Paz
7. MILS Number:
8. Operational Status: Explored Prospect
9. Summary of information received, comments, etc.:

Mr. McKee was in for help: He has a group of claims in portions of Sec. 34, 35 and 36, T.3N., R.20W. He has encountered some free gold in a percussion bit drill hole in the southern portion of his Triple M #5 claim in the center section 34. The gold lodged into the bit was exhibited.

His primary problem relates to assay results from a Rogers Laboratories in Utah which has reported economic grades of gold, silver, platinum and palladium in samples he has submitted. His attempts to have such results repeated by Union Assay in Salt Lake City, Iron King Assay and Skyline Laboratories have failed. His subsequent contact with Roger's lab was that the other labs didn't know how to pretreat the samples. The best recommendation I could provide was to obtain the pretreatment method from Rogers' and have it duplicated by known established labs. Further, no exploration company will show much interest in a property if one assayer's results cannot reasonably be duplicated by accepted industry procedures.

Date: January 7, 1990

Ken A. Phillips



TRIPLE M GROUP

LA PAZ COUNTY

KAP 12/13/88: Floyd McKee reported he has claims around Sugar Loaf Mountain near Quartzsite on which he plans to blast off some ledges in search of gold. The exact location is unknown. He referred to the claims as the Triple M Group but neither he or the claims is on the BLM microfiche.
