



CONTACT INFORMATION

Mining Records Curator
Arizona Geological Survey
1520 West Adams St.
Phoenix, AZ 85007
602-771-1601
<http://www.azgs.az.gov>
inquiries@azgs.az.gov

The following file is part of the

Arizona Department of Mines and Mineral Resources Mining Collection

ACCESS STATEMENT

These digitized collections are accessible for purposes of education and research. We have indicated what we know about copyright and rights of privacy, publicity, or trademark. Due to the nature of archival collections, we are not always able to identify this information. We are eager to hear from any rights owners, so that we may obtain accurate information. Upon request, we will remove material from public view while we address a rights issue.

CONSTRAINTS STATEMENT

The Arizona Geological Survey does not claim to control all rights for all materials in its collection. These rights include, but are not limited to: copyright, privacy rights, and cultural protection rights. The User hereby assumes all responsibility for obtaining any rights to use the material in excess of "fair use."

The Survey makes no intellectual property claims to the products created by individual authors in the manuscript collections, except when the author deeded those rights to the Survey or when those authors were employed by the State of Arizona and created intellectual products as a function of their official duties. The Survey does maintain property rights to the physical and digital representations of the works.

QUALITY STATEMENT

The Arizona Geological Survey is not responsible for the accuracy of the records, information, or opinions that may be contained in the files. The Survey collects, catalogs, and archives data on mineral properties regardless of its views of the veracity or accuracy of those data.

10/29/97

ARIZONA DEPARTMENT OF MINES AND MINERAL RESOURCES FILE DATA

PRIMARY NAME: TR

ALTERNATE NAMES:

PELLETIER CLAIMS
BR

YAVAPAI COUNTY MILS NUMBER: 1391

LOCATION: TOWNSHIP 12 N RANGE 2 W SECTION 6 QUARTER SE
LATITUDE: N 34DEG 24MIN 09SEC LONGITUDE: W 112DEG 30MIN 16SEC
TOPO MAP NAME: WILHOIT 7.5 - MIN

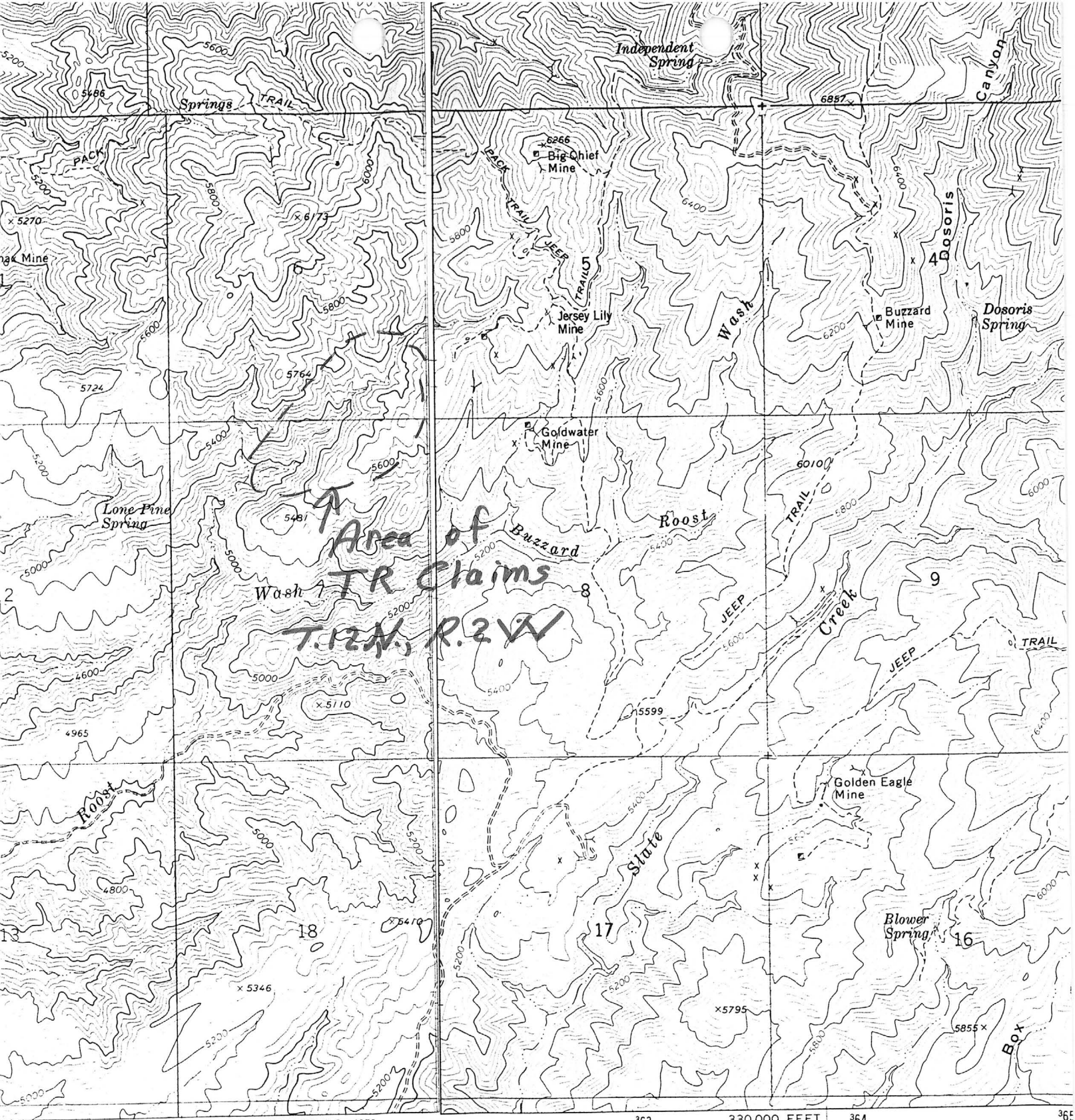
CURRENT STATUS: EXP PROSPECT

COMMODITY:

COPPER SULFIDE

BIBLIOGRAPHY:

ADMMR TR MINE FILE
CLAIMS EXTEND SOUTHWARD INTO SEC. 7



• INTERIOR—GEOLOGICAL SURVEY WASHINGTON D.C.—1973
R 3 W R 2 W

112° 30' 363 330 000 FEET 364 365

ROAD CLASSIFICATION

- Primary highway, hard surface
- Secondary highway, hard surface
- Light-duty road, hard or improved surface
- Unimproved road
- Interstate Route
- U. S. Route
- State Route

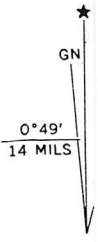
Mapped, edited, and published by the Geological Survey

Control by USGS and NOS/NOAA

Topography by photogrammetric methods from aerial photographs taken 1973. Field checked 1974

Projection and 10,000-foot grid ticks: Arizona coordinate system, central zone (transverse Mercator)

1000-metre Universal Transverse Mercator grid ticks, one 12, shown in blue. 1927 North American datum



WILHOIT, ARIZ.
NE/4 KIRKLAND 15' QUADRANGLE
N3422.5—W11230/7.5

Groom Creek, Az 7 1/2"

UTM GRID AND 1974 DECLINATION AT C

Roy & Bessie Pelletier
17423 Plaza Dolores
Rancho Bernardo
San Diego, CA 92128

June 10, 1997

Mr. Ken Phillips
Department of Mines and Mineral Resources
1502 West Washington
Phoenix, AZ 95007-3210

Dear Mr. Phillips:

Some time ago I found a large piece of float in a wash. Dr. Williams said it came from a massive sulfide. It assayed over \$300 per ton.

The area is thick with heavy brush but recently I found the location of the prospect.

I have an aerial photograph of the area and there is a fault over 2000 feet long.

A geologist told me that this fault could be related to a massive sulfide. This is where we are finding ore.

We live in San Diego and travel Saturday and stay at a motel Saturday night. Sunday we work until about 2 PM and then must return to San Diego because my partner must report to work Monday morning. Round trip is 800 miles.

We are trying to trench the width of the fault, but it is very time consuming. It is 3 feet to bedrock.

Dr. Williams states that the rocks we have been finding are the same as a capping over the Jerome massive sulfide (see letter). We are not able to drill through this capping and need help trenching the prospect. Do you have any suggestions?

Yours truly,

Roy Pelletier

Roy Pelletier

RP:kil

TR 12 N2W 6 SE
BR#65 12 N2W 7 W2
TR 12 N2W 7 N2

GLOBO DE PLOMO
P.O. Box 872
Douglas AZ 85608



Ship to: 510 E Globo Lane
Douglas AZ 85607
Tel: (520) 364-9637
Fax: (520) 364-7664

June 6, 1997

Roy Pelletier
17423 Plaza Dolores
Rancho Bernardo
San Diego CA 92128

1-619-451-0123

Dear Mr. Pelletier:

I have read your last two letters and have just finished studying the sample most recently received here. This rock is an intensely silicified volcanic unit with tiny oxidized pyrite grains disseminated in it and it is cut by fractures in which chalcopyrite was once present - it is oxidized to cuprite and hisingerite now. The sample is clearly highly anomalous in copper. The rock and its alteration are typical of the "exhalative" silica found above ores in the Jerome district and, for example, such rock occurs just south of the highway near Jerome and is believed to represent the "silicified cap" in that area. I hope you will not abandon your find too hastily!

Sincerely,

Sidney A. Williams
SAW:BJ