



CONTACT INFORMATION

Mining Records Curator
Arizona Geological Survey
1520 West Adams St.
Phoenix, AZ 85007
602-771-1601
<http://www.azgs.az.gov>
inquiries@azgs.az.gov

The following file is part of the

Arizona Department of Mines and Mineral Resources Mining Collection

ACCESS STATEMENT

These digitized collections are accessible for purposes of education and research. We have indicated what we know about copyright and rights of privacy, publicity, or trademark. Due to the nature of archival collections, we are not always able to identify this information. We are eager to hear from any rights owners, so that we may obtain accurate information. Upon request, we will remove material from public view while we address a rights issue.

CONSTRAINTS STATEMENT

The Arizona Geological Survey does not claim to control all rights for all materials in its collection. These rights include, but are not limited to: copyright, privacy rights, and cultural protection rights. The User hereby assumes all responsibility for obtaining any rights to use the material in excess of "fair use."

The Survey makes no intellectual property claims to the products created by individual authors in the manuscript collections, except when the author deeded those rights to the Survey or when those authors were employed by the State of Arizona and created intellectual products as a function of their official duties. The Survey does maintain property rights to the physical and digital representations of the works.

QUALITY STATEMENT

The Arizona Geological Survey is not responsible for the accuracy of the records, information, or opinions that may be contained in the files. The Survey collects, catalogs, and archives data on mineral properties regardless of its views of the veracity or accuracy of those data.

PRINTED: 10-01-2012

ARIZONA DEPARTMENT OF MINES AND MINERAL RESOURCES AZMILS DATA

PRIMARY NAME: TOOT IRON GROUP

ALTERNATE NAMES:

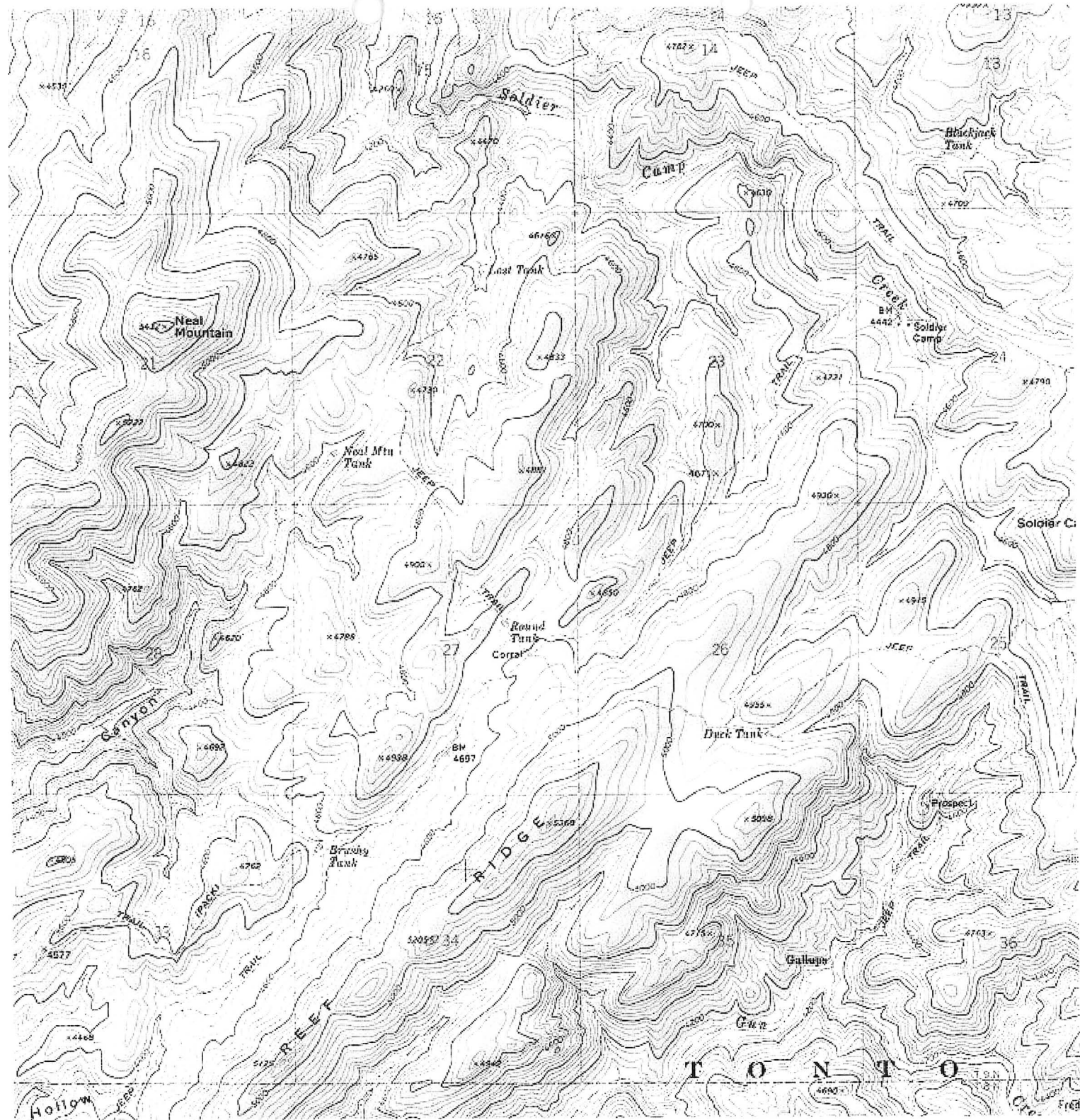
GILA COUNTY MILS NUMBER: 592

LOCATION: TOWNSHIP 09 N RANGE 11 E SECTION 22 QUARTER
LATITUDE: N 34DEG 06MIN 29SEC LONGITUDE: W 111DEG 12MIN 25SEC
TOPO MAP NAME: SHEEP BASIN MOUNTAIN - 7.5 MIN

CURRENT STATUS: UNK

COMMODITY:
IRON

BIBLIOGRAPHY:
ADMMR TOOT IRON GROUP FILE
CLAIMS EXTEND INTO SEC. 23



Abstract from "Arizona Iron Ore Deposits" in IRON COMMODITY file: The Gila County deposits, excepting the Toot Deposit, are generally believed to be replacements of Mescal limestone, Apache Group, Precambrian. They are usually near to the Mescal limestone-Dripping Spring quartzite contact and are in close proximity to diabase dikes or sills.

The Toot Iron lies 17 miles northeast of Tonto Basin near the headwaters of Gun Creek, in the Sierra Ancha Mountains (approximately Sections 22-23, T9N,R11E). Considerable bulldozer work has disclosed a large deposit of limonite and hematite impregnated in schist. According to Toot grab samples by Lincoln Stewart (U.S. Bureau of Mines) and him assayed about 25 percent iron. According to Toot preliminary concentration tests, by Stewart, indicated that the ore would beneficiate well. Until the area is systematically drilled, or otherwise tested, no reserve figure can be established. However the high relief along with the large areal extent of the mineralized zone indicate that the reserve could be large. (Agent, Gip Toot, Tonto Basin, Arizona)

Iron

DEPARTMENT OF MINERAL RESOURCES

STATE OF ARIZONA

FIELD ENGINEERS REPORT

Mine Toot Iron Group

Date 6-3-58

District Spring Creek Dist., Gila Co.

Engineer Lewis A. Smith

Subject: As reported by C. E. Toot

Owners: C. E. Toot et al, Pumpkin Center, Globe-Payson Rt.

Claims: 22 unpatented (work done)

Work: Series of bulldozer cuts across the iron bearing zone and some assessment work pits. Considerable work was done on the road.

Test Work: The U.S. Bureau of Mines took some large samples for beneficiation tests. They now are securing a second batch.

Beneficiation Tests Thus far the Bureau has not been able to extract more than 50 to 55% of the iron from an ore that averages 26% Fe. The minerals are all limonite and hematite. Local concentrations run up to 46% Fe. The Bureau is now trying other methods. No notable deleterious constituents were found.

Geology: The deposit lies in a major shear zone between schist and diorite porphyry, both of which are regarded as of Pre-Cambrian age. The deposit is locally capped by Dripping Springs Quartzite, particularly along one side. The shear strikes nearly north and south.

Reserves: Tentatively approximated at 200,000,000 to 250,000,000 tons.

Access: 17 miles of country road from Chalk Mountain, down Gun Creek to Tonto Basin, thence by ten miles of graded road to the Payson-Mesa highway, and thence 65 miles on pavement to Mesa, a total of 92-93 miles. A price of 6 cents a mile was quoted for truck haulage. Toot stated also, that it is hoped that the county would shortly improve the road as far as Chalk Mountain. This same haulage problem confronts the Massingil Barite deposit. Another alternative, which is currently being investigated, is the construction of a new county highway from east of Tonto Basin to the Young-Globe highway. This would shorten the distance to railhead, but the road in its entirety would be dirt, or surfaced dirt.