



CONTACT INFORMATION

Mining Records Curator
Arizona Geological Survey
1520 West Adams St.
Phoenix, AZ 85007
602-771-1601
<http://www.azgs.az.gov>
inquiries@azgs.az.gov

The following file is part of the

Arizona Department of Mines and Mineral Resources Mining Collection

ACCESS STATEMENT

These digitized collections are accessible for purposes of education and research. We have indicated what we know about copyright and rights of privacy, publicity, or trademark. Due to the nature of archival collections, we are not always able to identify this information. We are eager to hear from any rights owners, so that we may obtain accurate information. Upon request, we will remove material from public view while we address a rights issue.

CONSTRAINTS STATEMENT

The Arizona Geological Survey does not claim to control all rights for all materials in its collection. These rights include, but are not limited to: copyright, privacy rights, and cultural protection rights. The User hereby assumes all responsibility for obtaining any rights to use the material in excess of "fair use."

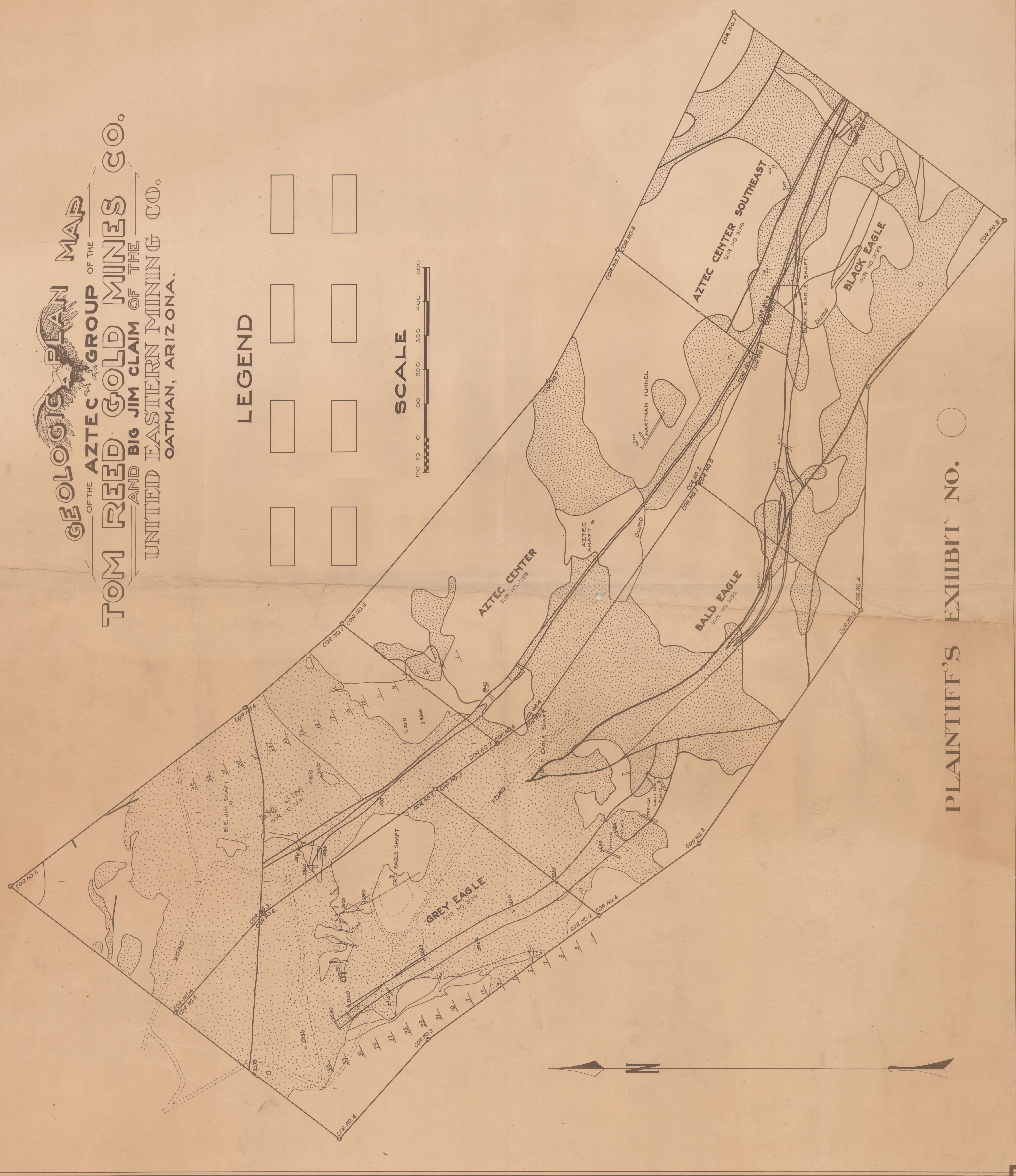
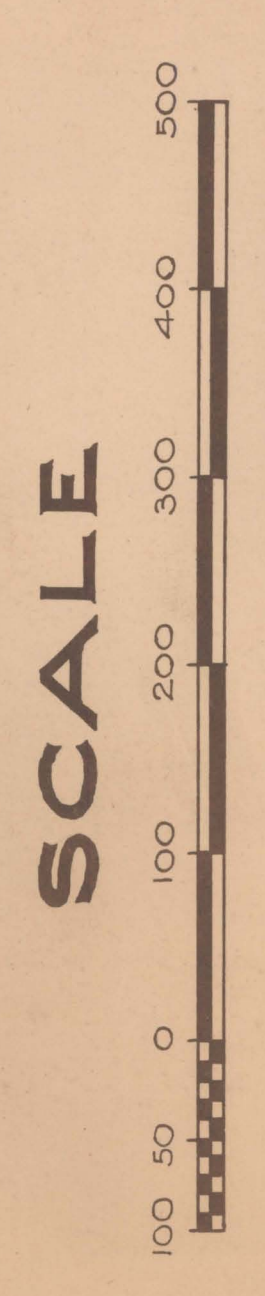
The Survey makes no intellectual property claims to the products created by individual authors in the manuscript collections, except when the author deeded those rights to the Survey or when those authors were employed by the State of Arizona and created intellectual products as a function of their official duties. The Survey does maintain property rights to the physical and digital representations of the works.

QUALITY STATEMENT

The Arizona Geological Survey is not responsible for the accuracy of the records, information, or opinions that may be contained in the files. The Survey collects, catalogs, and archives data on mineral properties regardless of its views of the veracity or accuracy of those data.

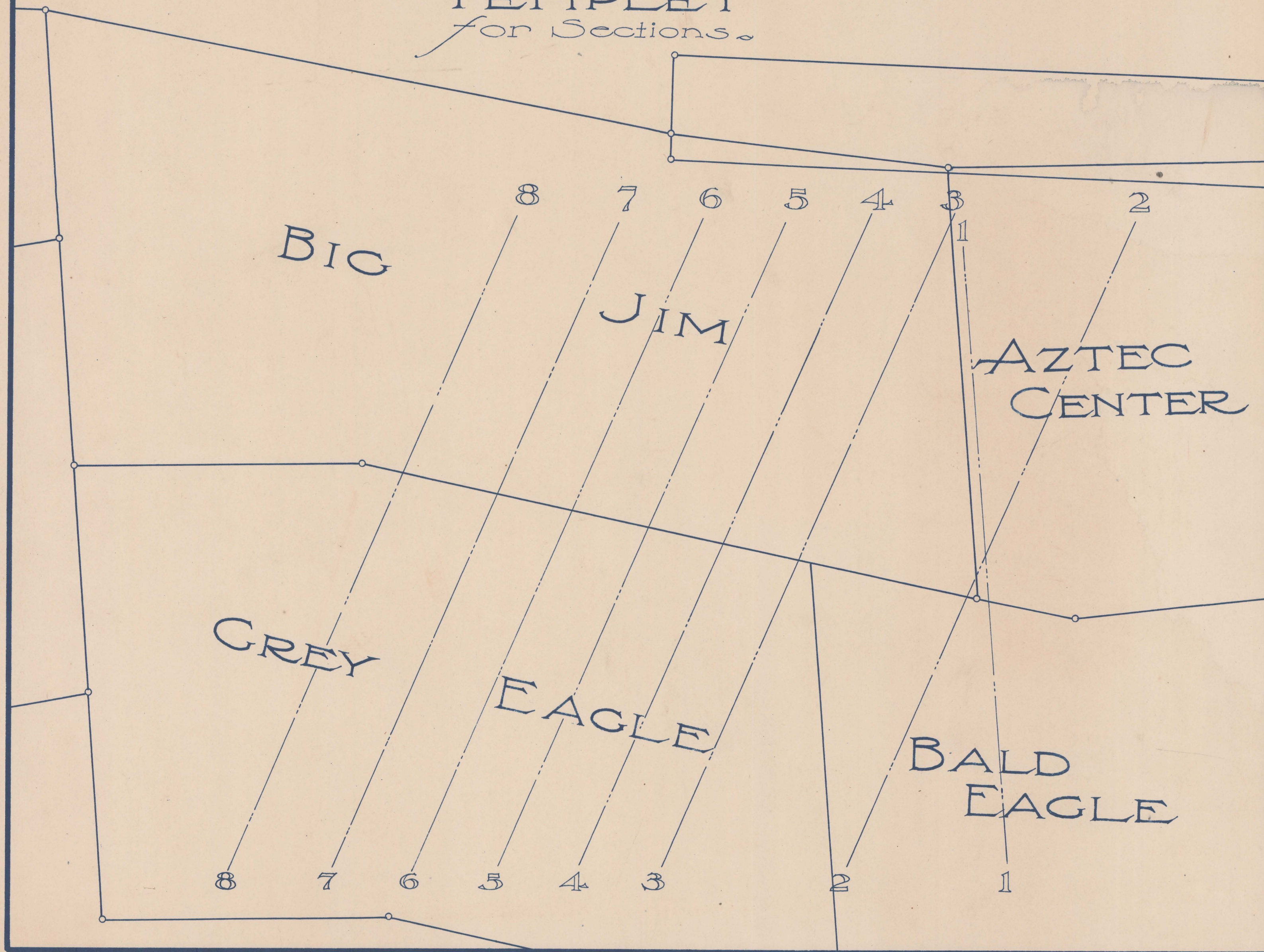
GEOLOGIC PLAN MAP
 OF THE **AZTEC GROUP**
TOM REED GOLD MINES CO.
 AND **BIG JIM CLAIM** OF THE
UNITED EASTERN MINING CO.
 OATMAN, ARIZONA.

LEGEND



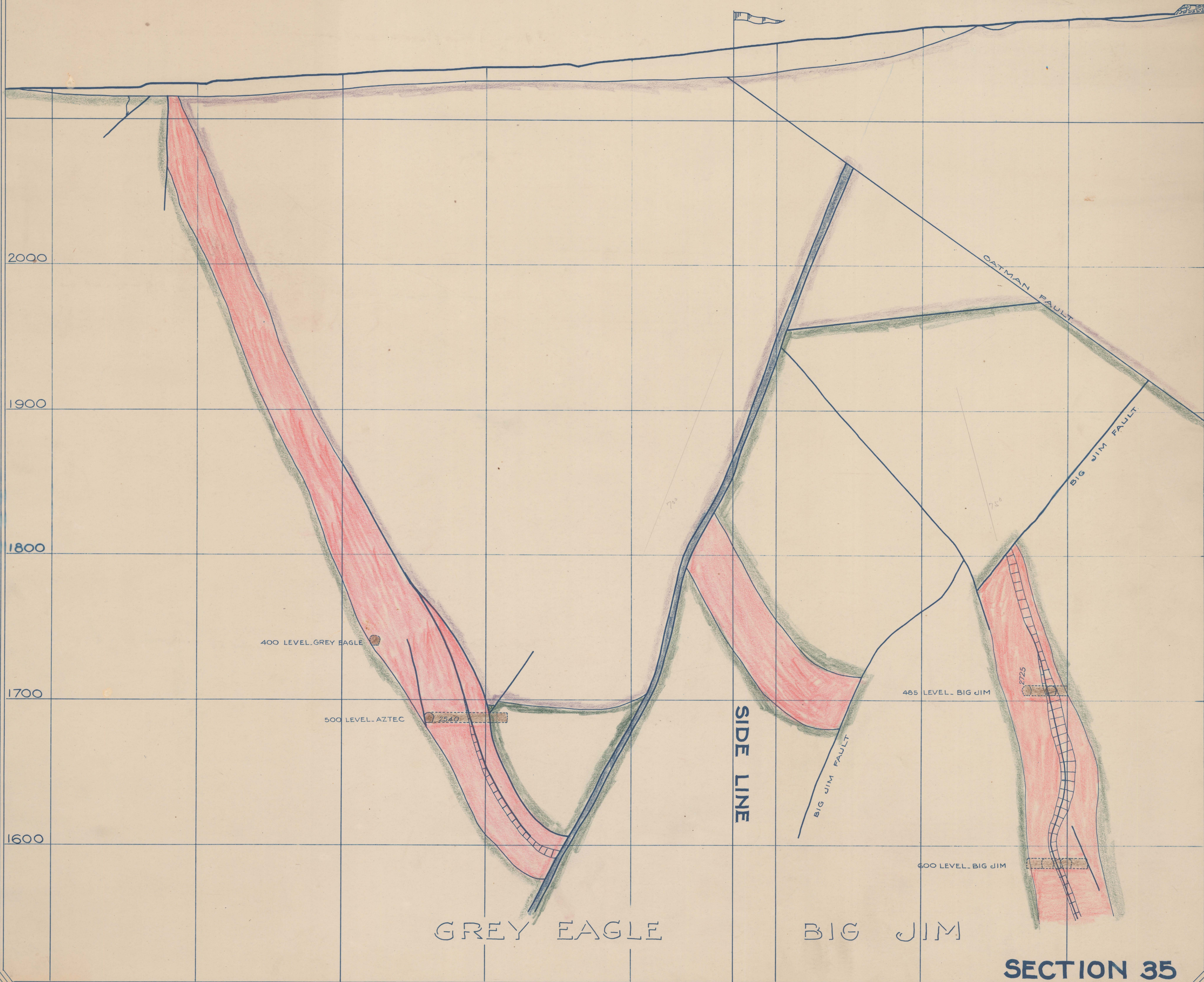
PLAINTIFF'S EXHIBIT NO. ○

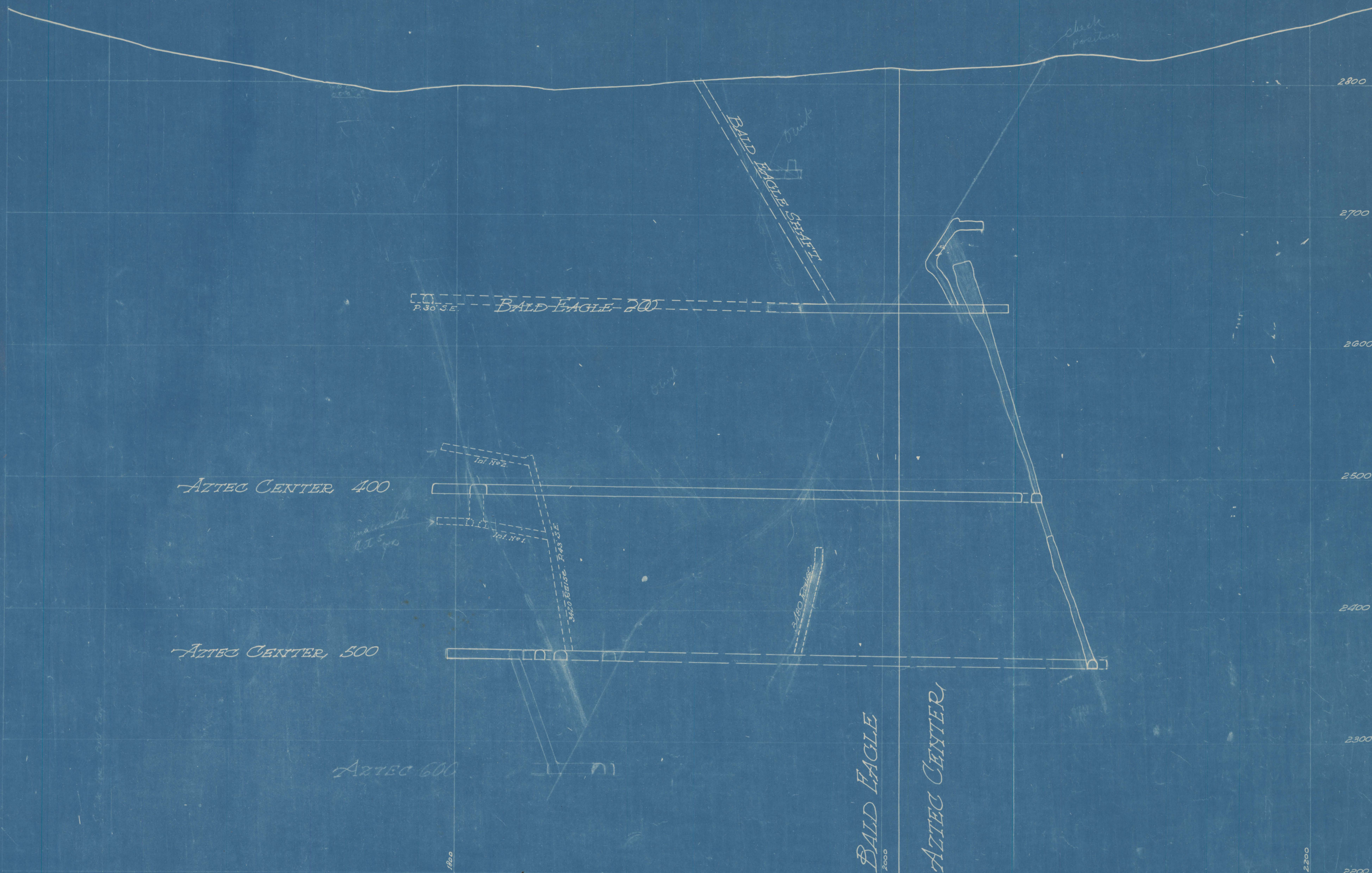
TEMPLET
for Sections.



ADMHR 0006-031

MICROFILMED NOV 11 '81



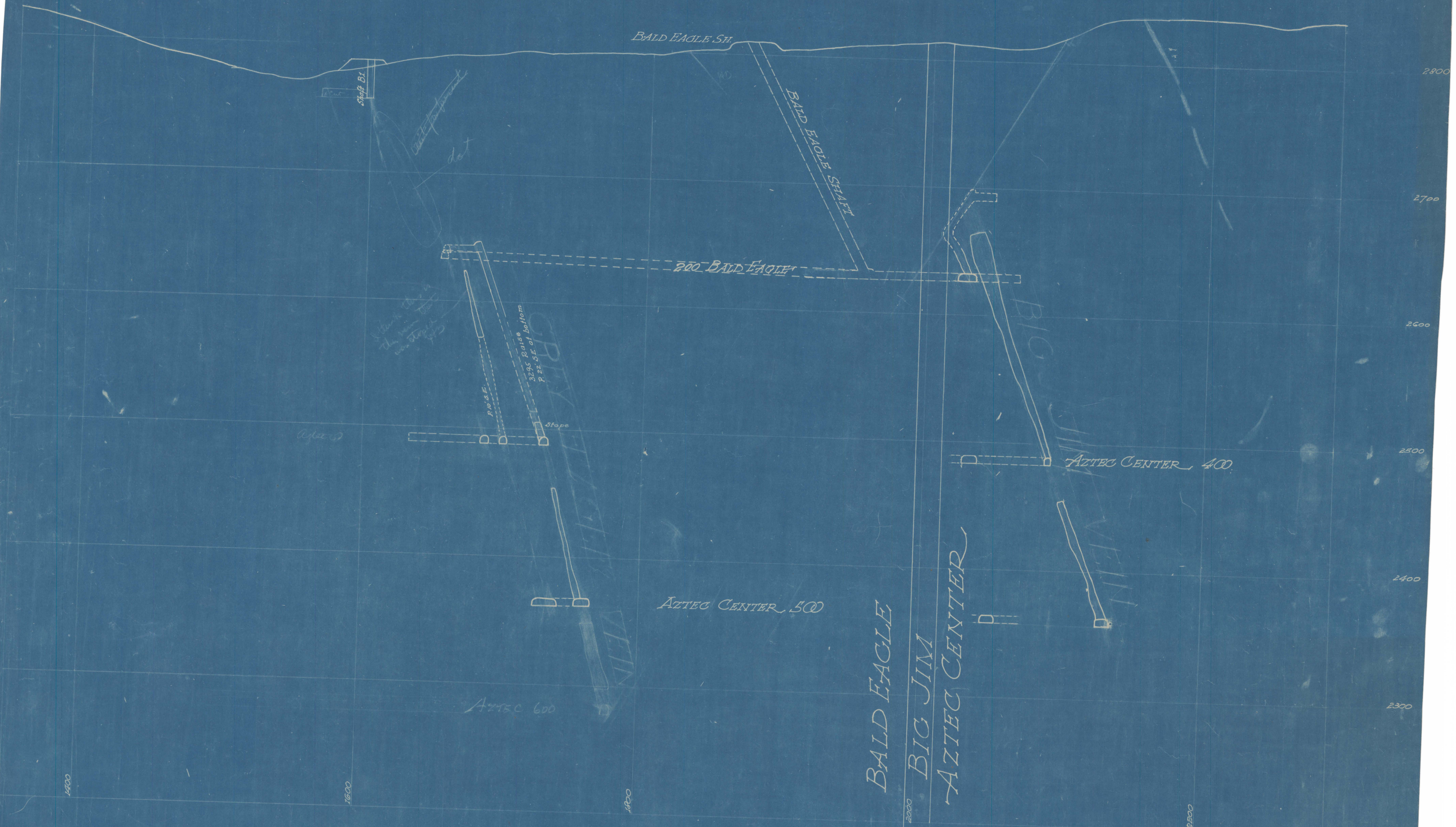


SECTION 1

LOOKING
NORTH WEST

Scale 1 inch = 40 feet

ADMR 0006-033



ADMMR0006-034

SECTION 2.
LOOKING
NORTH WEST.
Scale 1 inch = 40 feet



SECTION 5.

LOOKING
NORTH WEST.

Scale 1 inch = 40 feet.

AB44R0006-025

GREY EAGLE 325

GREY EAGLE 400

GREY EAGLE 500

Bottom of Wings

2672 Bend

2700 WING

BIG JIM

BIG JIM 500

BIG JIM 600

BIG JIM SHART

GREY EAGLE
BIG JIM

ADMMR0006-036

SECTION 8.

LOOKING
NORTH WEST.

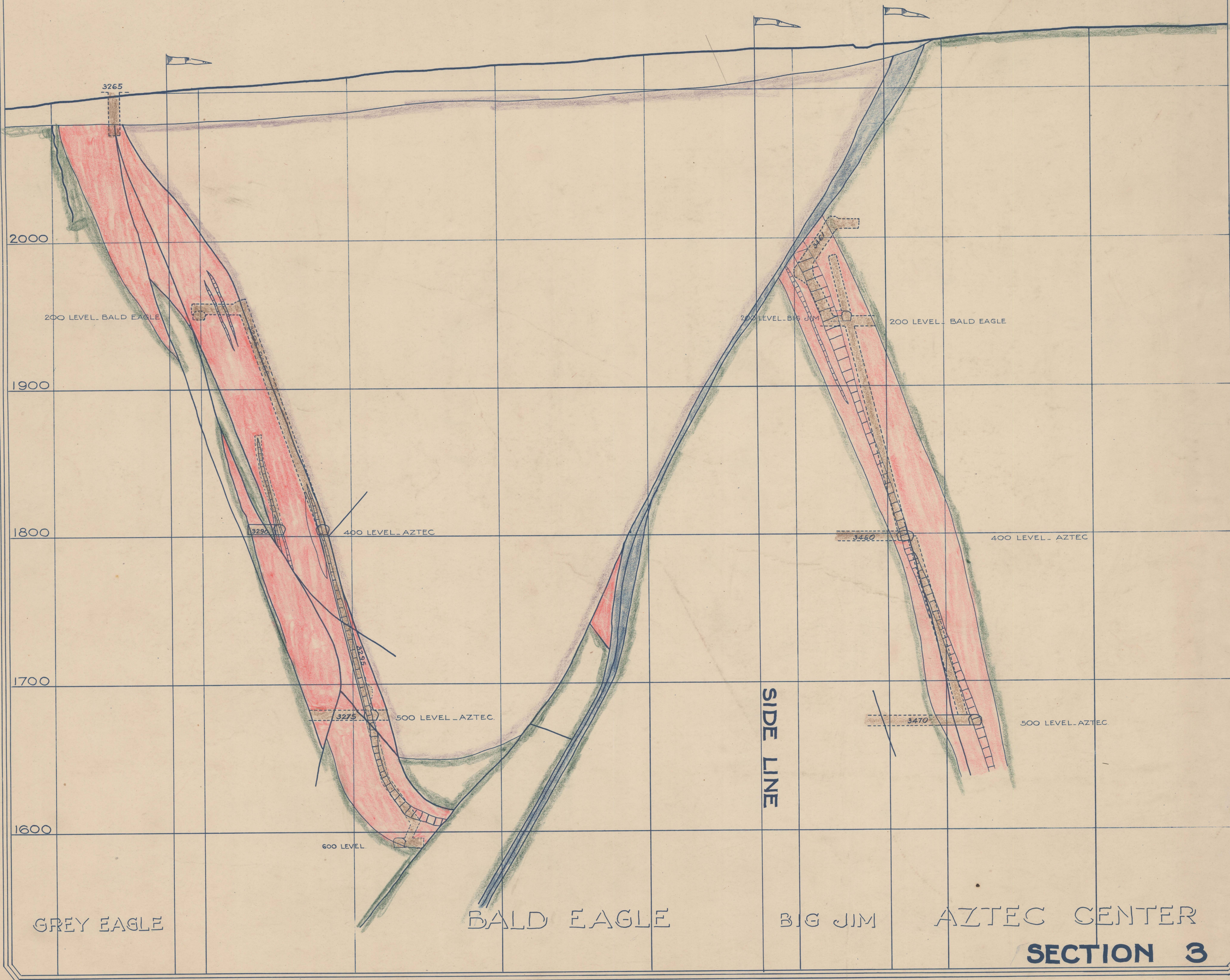
Scale 1 inch = 40 feet

See Town and Range maps & sections
 Red = vein
 Blue = fault
 = quartz calcite lenses
 Brown = workings
 Green = latite and
 Purple = granite (biotite) and

Below of Aztec Chief -
 Station of Bald Eagle as 2187.52 in distance
 section

2187
 1800
 587

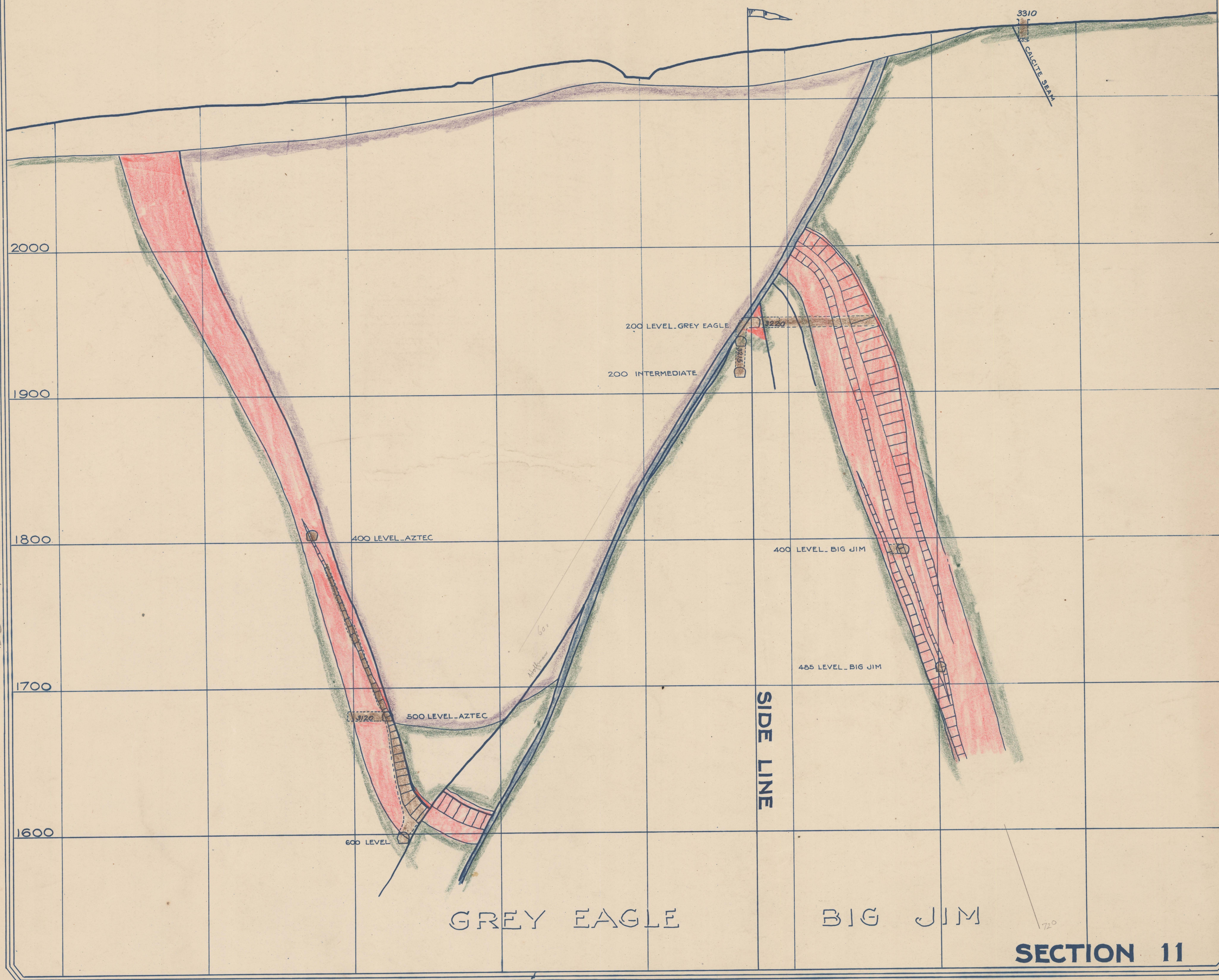
These elevations
 are subject to change
 as more sections
 are taken
 at 700 ft lower
 than on level



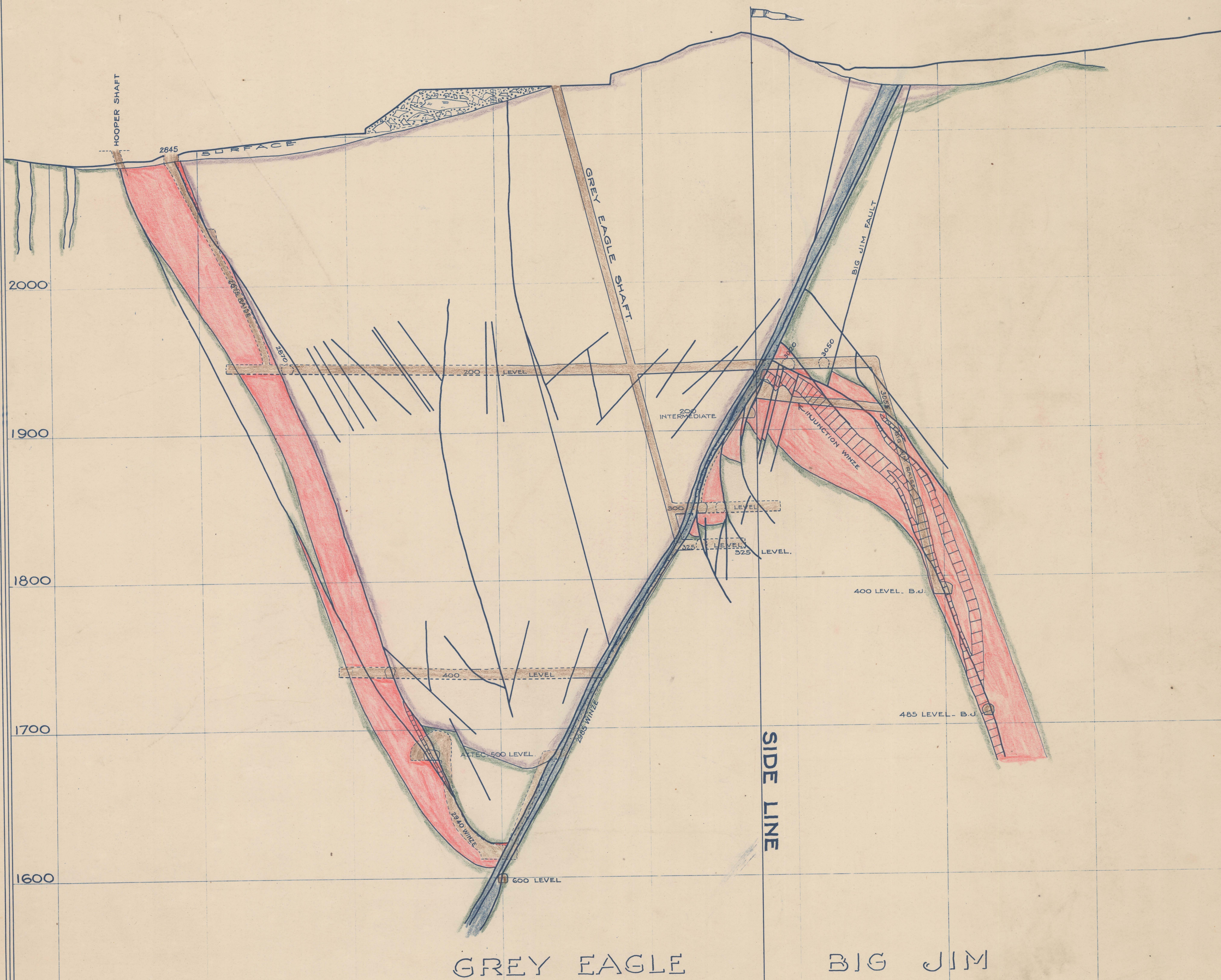
ADMR 0006-037

Reduce to 1/4

ABMR 0006-038

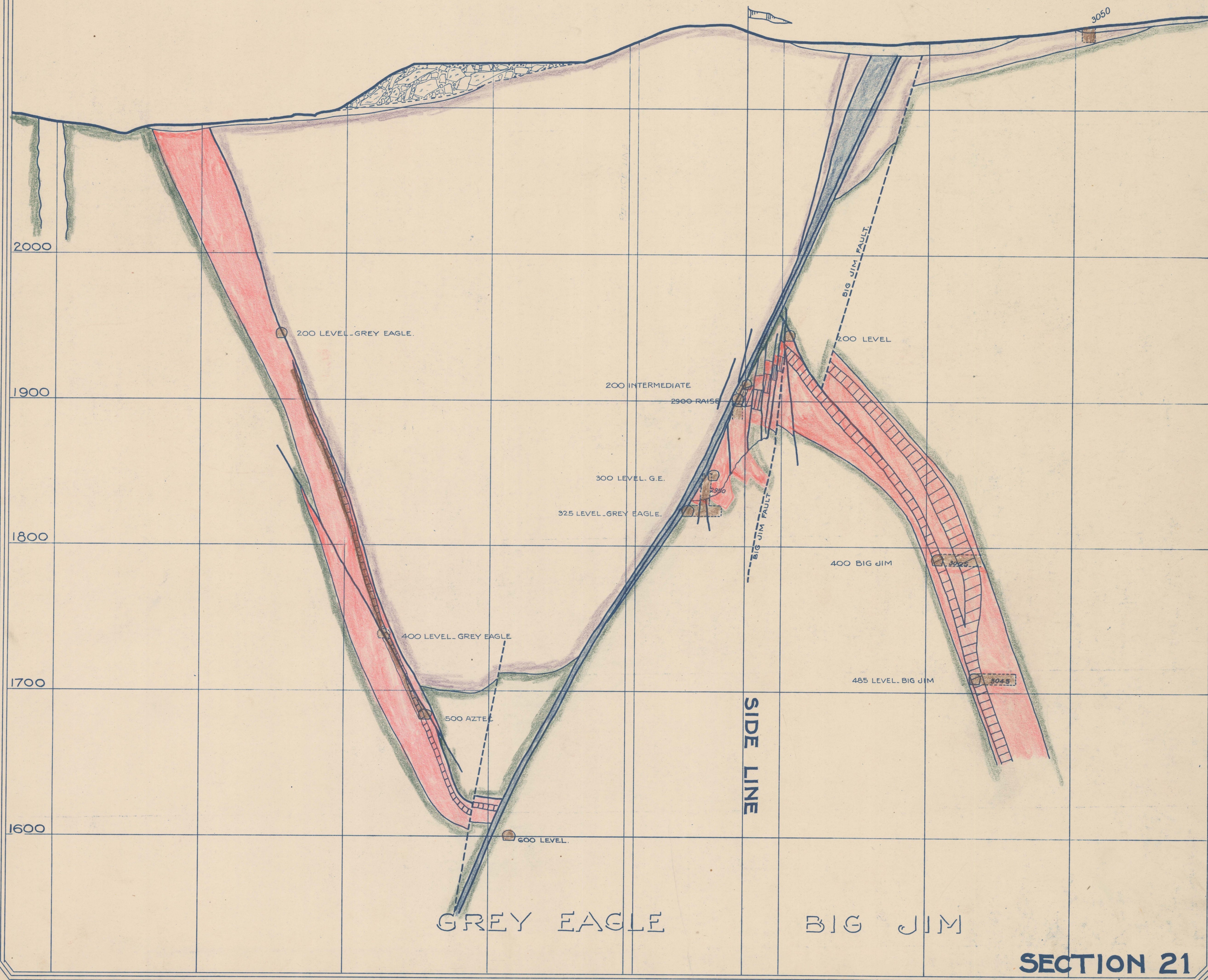


ADMR 2006-039



SECTION 19

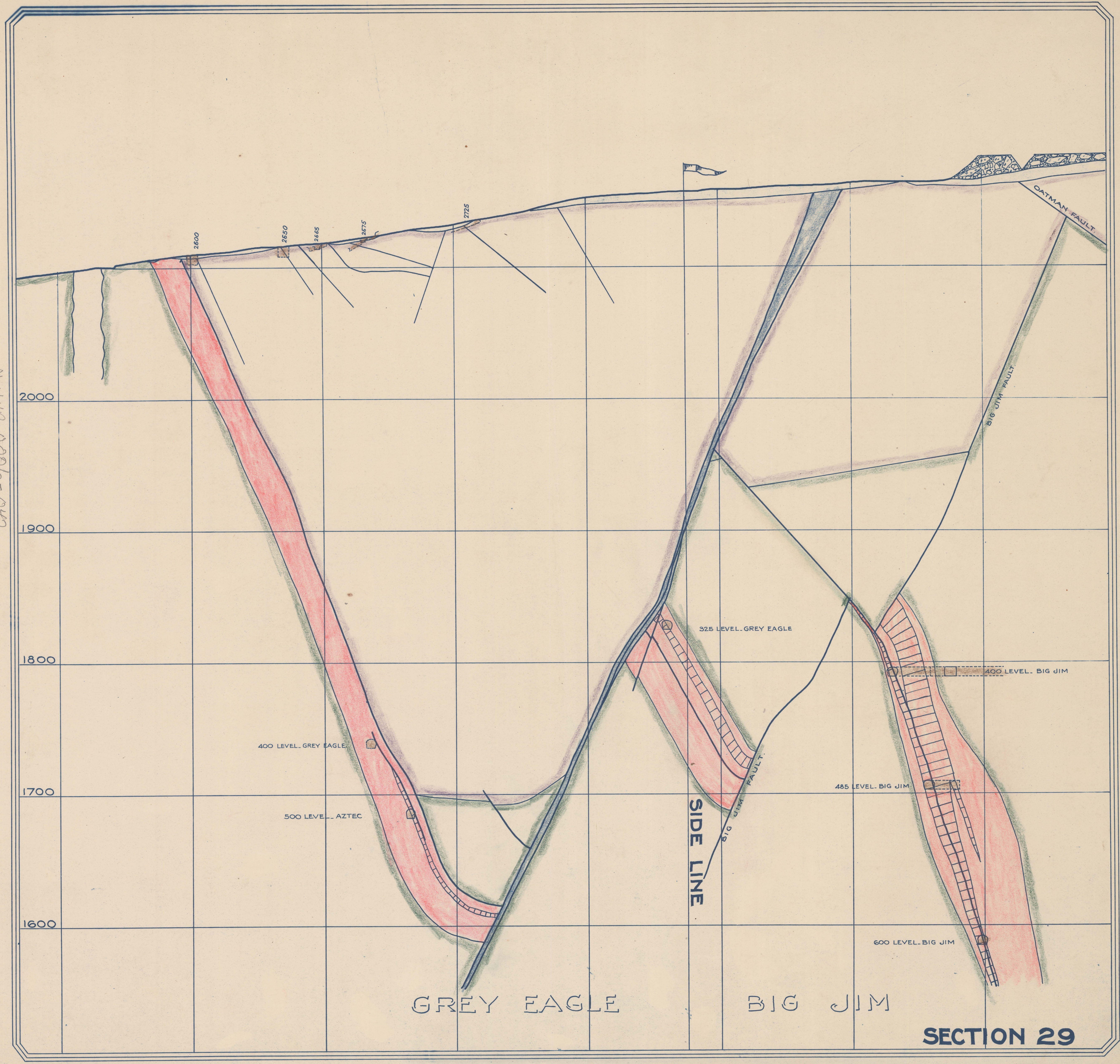
ABMR 0006-040



ADMR 0006-041

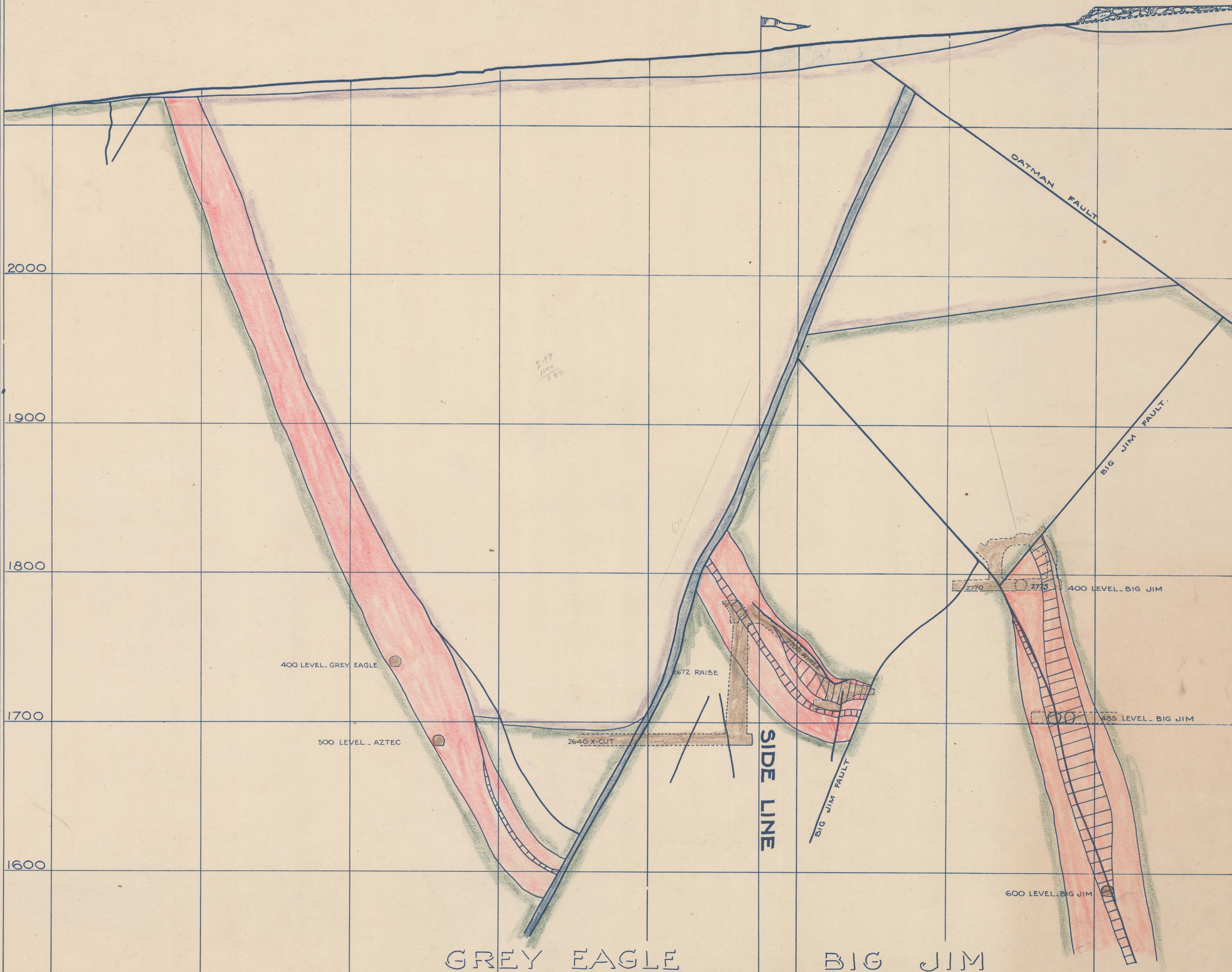


ASHMR 0006-072



SECTION 29

ABMUR-043



GREY EAGLE

BIG JIM

SECTION 33