



CONTACT INFORMATION

Mining Records Curator
Arizona Geological Survey
1520 West Adams St.
Phoenix, AZ 85007
602-771-1601
<http://www.azgs.az.gov>
inquiries@azgs.az.gov

The following file is part of the

Arizona Department of Mines and Mineral Resources Mining Collection

ACCESS STATEMENT

These digitized collections are accessible for purposes of education and research. We have indicated what we know about copyright and rights of privacy, publicity, or trademark. Due to the nature of archival collections, we are not always able to identify this information. We are eager to hear from any rights owners, so that we may obtain accurate information. Upon request, we will remove material from public view while we address a rights issue.

CONSTRAINTS STATEMENT

The Arizona Geological Survey does not claim to control all rights for all materials in its collection. These rights include, but are not limited to: copyright, privacy rights, and cultural protection rights. The User hereby assumes all responsibility for obtaining any rights to use the material in excess of "fair use."

The Survey makes no intellectual property claims to the products created by individual authors in the manuscript collections, except when the author deeded those rights to the Survey or when those authors were employed by the State of Arizona and created intellectual products as a function of their official duties. The Survey does maintain property rights to the physical and digital representations of the works.

QUALITY STATEMENT

The Arizona Geological Survey is not responsible for the accuracy of the records, information, or opinions that may be contained in the files. The Survey collects, catalogs, and archives data on mineral properties regardless of its views of the veracity or accuracy of those data.

08/12/97

ARIZONA DEPARTMENT OF MINES AND MINERAL RESOURCES FILE DATA

PRIMARY NAME: THORN PEAK NO. 1

ALTERNATE NAMES:

YAVAPAI COUNTY MILS NUMBER: 23A

LOCATION: TOWNSHIP 13 N RANGE 9 W SECTION 13 QUARTER N2
LATITUDE: N 34DEG 28MIN 14SEC LONGITUDE: W 113DEG 09MIN 15SEC
TOPO MAP NAME: THORN PEAK - 7.5 MIN

CURRENT STATUS: EXP PROSPECT

COMMODITY:
GOLD

BIBLIOGRAPHY:
USGS THORN PEAK QUAD
ADMMR THORN PEAK NO. 1 FILE

assessed 10/15/80
7/1/80

DEPARTMENT OF MINERAL RESOURCES
STATE OF ARIZONA
FIELD ENGINEERS REPORT

Mine Thorn Peak #1

Date March 15, 1980

District Eureka

Engineer Ken A. Phillips

KAP

Subject: Mine Visit

Economic Minerals: Gold

On the above date, the author in the company of H. Mason Coggin, Consulting Mining Engineer and Jim Graham, an independent prospector a reconnaissance visit was made to a cluster of prospects shown on the Thorn Peak, Arizona 7 1/2' Topographic Quadrangle (see attached map).

The prospects are located approximately 2 miles southwest of Crosby Mountain and 2 miles north of the Santa Maria River in Section 13, T13N, R9W.

The prospects consist of numerous shallow pits and shafts on quartz veins or quartz horizon in pre-Cambrian granite. The veins strike slightly east of north. Each shaft has, at its collar, both a small waste dump and a small pile of sorted vein material. The work is guessed to have been done in the 1930's, but may be earlier.

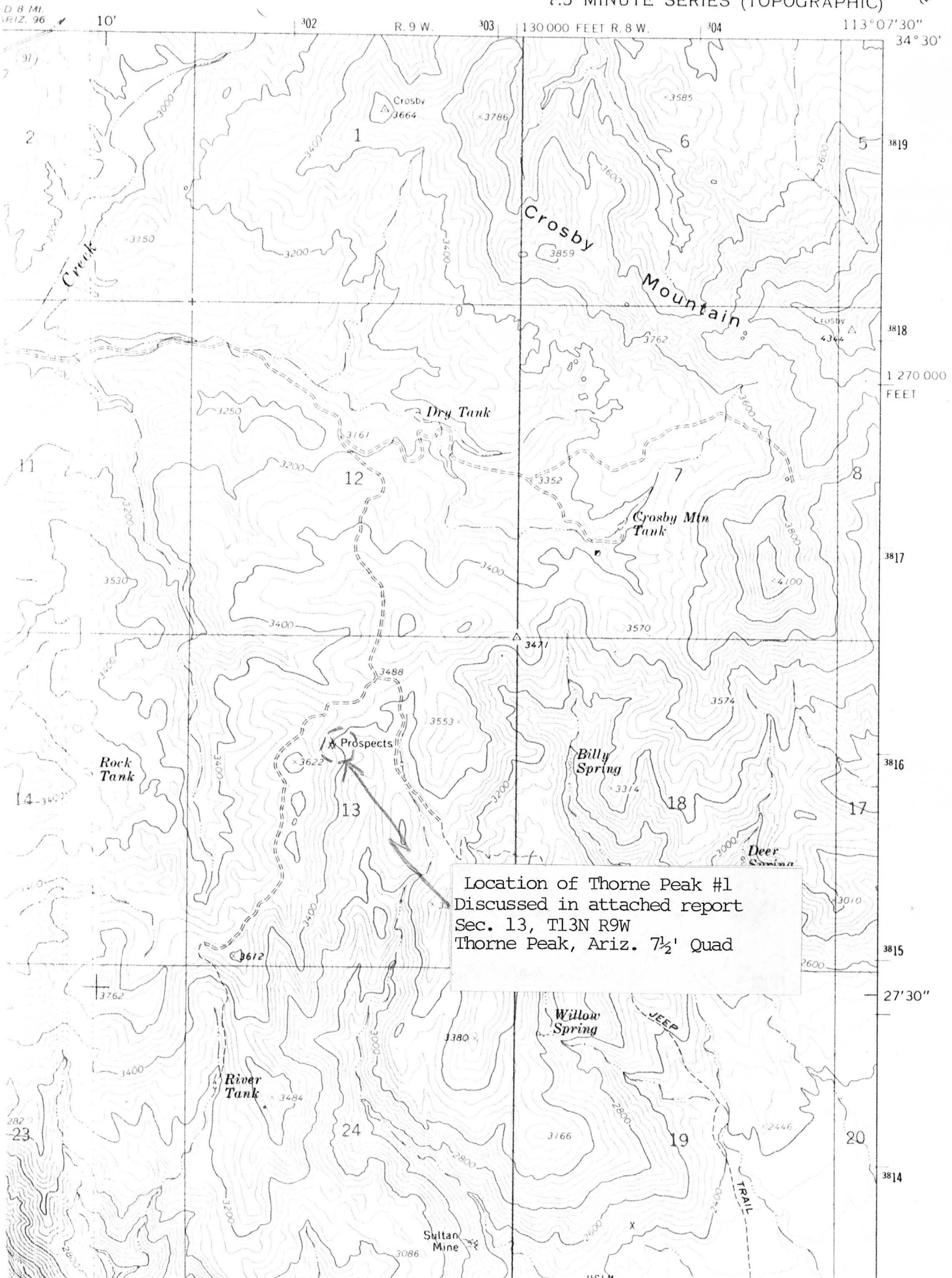
A single grab sample made up of grab samples from many of the piles of vein material was fire assayed at the expense of H. Mason Coggin for gold and silver. The sample ran 0.252 tr. oz. Au/ton and 0.01 tr. oz. Ag/ton.

Work is needed on the prospects and nearby area to determine its potential as a gold exploration target. Detailed geologic mapping coupled with gold, silver, arsenic and tungsten geochemistry may well be the most applicable preliminary exploration tools.

KAP/ap

THORNE PEAK QUADRANGLE
ARIZONA - YAVAPAI CO.
7.5 MINUTE SERIES (TOPOGRAPHIC)

3353 11
18AGDAD 1.62 50



Location of Thorne Peak #1
Discussed in attached report
Sec. 13, T13N R9W
Thorne Peak, Ariz. 7½' Quad

Eureka Mine Visit, March 15, 1980

Regional Geographic Location of the Thorn Peak #1 Prospects

