



CONTACT INFORMATION

Mining Records Curator
Arizona Geological Survey
1520 West Adams St.
Phoenix, AZ 85007
602-771-1601
<http://www.azgs.az.gov>
inquiries@azgs.az.gov

The following file is part of the

Arizona Department of Mines and Mineral Resources Mining Collection

ACCESS STATEMENT

These digitized collections are accessible for purposes of education and research. We have indicated what we know about copyright and rights of privacy, publicity, or trademark. Due to the nature of archival collections, we are not always able to identify this information. We are eager to hear from any rights owners, so that we may obtain accurate information. Upon request, we will remove material from public view while we address a rights issue.

CONSTRAINTS STATEMENT

The Arizona Geological Survey does not claim to control all rights for all materials in its collection. These rights include, but are not limited to: copyright, privacy rights, and cultural protection rights. The User hereby assumes all responsibility for obtaining any rights to use the material in excess of "fair use."

The Survey makes no intellectual property claims to the products created by individual authors in the manuscript collections, except when the author deeded those rights to the Survey or when those authors were employed by the State of Arizona and created intellectual products as a function of their official duties. The Survey does maintain property rights to the physical and digital representations of the works.

QUALITY STATEMENT

The Arizona Geological Survey is not responsible for the accuracy of the records, information, or opinions that may be contained in the files. The Survey collects, catalogs, and archives data on mineral properties regardless of its views of the veracity or accuracy of those data.

PRINTED: 02-26-2009

ARIZONA DEPARTMENT OF MINES AND MINERAL RESOURCES AZMILS DATA

PRIMARY NAME: SW MUGGINS MTNS PLACERS

ALTERNATE NAMES:

MUGGINS WASH PLACERS
BIG BONUS PLACER
BURRO CANYON

YUMA COUNTY MILS NUMBER: 832

LOCATION: TOWNSHIP 8 S RANGE 20 W SECTION 13 QUARTER SW
LATITUDE: N 32DEG 43MIN 39SEC LONGITUDE: W 114DEG 16MIN 40SEC
TOPO MAP NAME: LIGURTA - 7.5 MIN

CURRENT STATUS: PAST PRODUCER

COMMODITY:

GOLD PLACER
SILVER

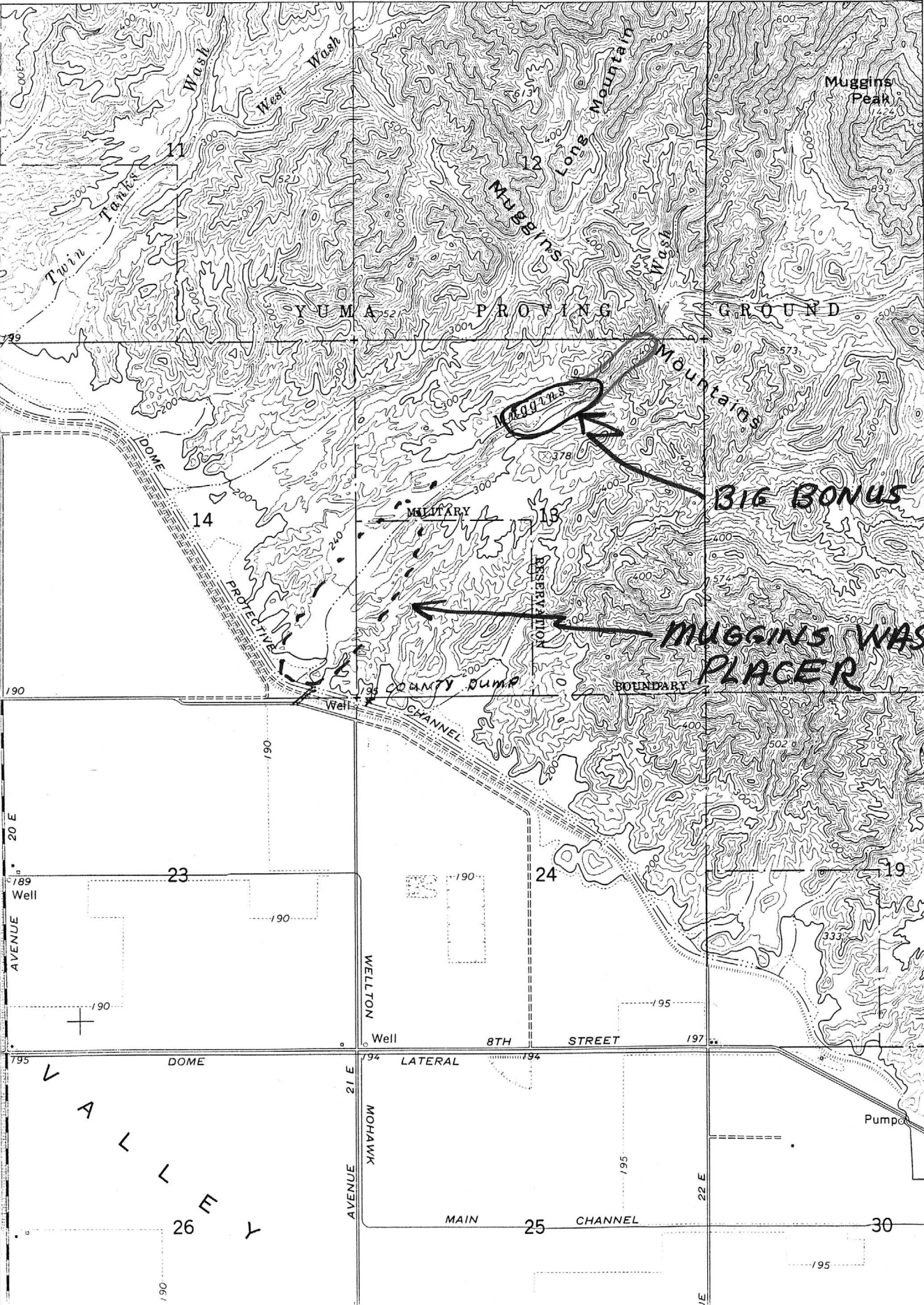
BIBLIOGRAPHY:

ADMMR SW MUGGINS MTNS PLACERS
JOHNSON, M.G. 1972, PLACER GOLD DEPOSITS OF
ARIZONA, USGS BULL. 1355, P. 70 AZBM B160-22
SMITH, DAVID B, 1989, MIN RES MUGGINS MTNS
WILDERNESS STUDY AREA, USGS BULL. 1702-D, P. 16
WOOD, R.H., 1988, MIN RES MUGGINS MTNS WILDRNS
STUDY AREA, USBM MLA 11-88, P. 17
KEITH, S.B., 1978, AZBM BULL. 192, P. 164 BUL

LIGURTA G. DRANGLE
ARIZONA—YUMA CO.
7.5 MINUTE SERIES (TOPOGRAPHIC)
NE/4 FORTUNA 15' QUADRANGLE

31491
RED BLUFF MTN.
1:62 500

17'30" 1754 1755 1756 1757 340 000 FEET R. 20 W. R. 19 W. 1758 114° 15' 32° 45'



SW MUGGINS MOUNTAINS PLACER

V
A
L
L
E
Y

M.

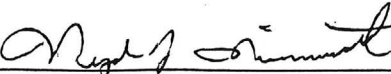
ARIZONA DEPARTMENT OF MINES AND MINERAL RESOURCES

VERBAL INFORMATION SUMMARY

1. Information from: Dick Frazier
2. Address:
3. Phone:
4. Mine or property name:
5. ADMMR Mine file: SW Muggins Mtns Placers
6. County: Yuma
7. MILS Number:
8. Operational Status: Sampling
9. Summary of information received, comments, etc.:

Jim Estes from Baker, Oregon is conducting a large Placer Sampling Operation in Muggins Wash. Although the project is in early stages, they are enthused about good results to date.

Date: 3/25/90


N. NIEMUTH

Arizona Department of Mines and Mineral Resources

MINE AND PROSPECT FIELD VISIT DATE SUMMARY

COMMODITIES: Gold - Placer

MILS ID No.: Yuma 832

DATE: April 24, 1990

ENGINEER: Ken A. Phillips

INFORMATION FROM: Field visit on above date

PROPERTY SUMMARY

MINE NAME: Muggins Wash Placers

ADMMR MINE FILE: SW Muggins Mountains Placers

LOCATION: (LEGAL DESCRIPTION): SE, Sec. 14, T.8S.,R.20W.

ELEVATION: 200' - 240'

COUNTY: Yuma

TOPOGRAPHIC QUADRANGLE: Ligurta 7.5'

DIRECTIONS: In Muggins Wash directly up stream from the Dome Valley protection levee. Cross levee at Yuma County solid waste transfer access.

MAP ATTACHED: YES

PAST PRODUCTION(NOTED, KNOWN, PROBABLE, UNKNOWN, NONE): Doubtful

CURRENT STATUS: Past producer

WORKINGS: Spoil piles of screened oversize and silt pits resulting from probable placer sampling. Traveled 1.1 miles up wash. Found two silt pits about 0.5 and 0.6 miles up stream from the levee. For about 500' of the wash the main channel cuts through flow banded rhyolites. Remainder of the area traveled was in either unconsolidated or consolidated desert gravels. Work seen was probably one or two years old.

GEOLOGY AND MINERALOGY: DEPOSIT TYPE: Desert placer with typical repetitive flood stratification and caliche.

COMMENTS: Unsorted to poorly sorted subangular sand, gravel, cobbles and small boulders up to 2' in diameter. Current channel cuts about 20 feet of gravels - typical desert flash flood placer.

EQUIPMENT ON SIGHT: None

REFERENCES AND REMARKS: See AzMILS bibliography

ARIZONA DEPARTMENT OF MINES AND MINERAL RESOURCES

FIELD VISIT REPORT

Information from: Field visit with Bill Poppy at mine site April 24, 1990

Mine: **BIG BONUS**

ADMMR Mine File: **SW Muggins Mtn. Placers**

County: **Yuma**

AzMILS Number: **832**

Legal Description: **Center North half, Sec. 13, T.8 S., R.20 W.**

USGS Topographic Map: **Ligurta 7.5'**

Location (descriptive): **On Muggins Wash about 1 mile up stream from Dome Valley flood protection levee**

Number of Claims - Unpatented: **Unknown, operations are within a "cherry steamed" area of a wilderness study area.**

Operating Company: **Company name not provided**
Pertinent People and/or Firm: **Jim Estes of Baker, Oregon**

Commodities: **Gold - Placer**

Operational Status: **Bulk testing**
Summary of information received, comments, etc.:

Operation consists of bulk testing of desert placer material with a dry unit; with concentrates being further treated at a wet plant in Dome Valley.

The dry unit is reportedly rated at 100 cubic yards per hour. It is a dry washer combined with an electrostatic collector. Feed to the plant is dumped across a 4" grizzly to a vibrating feeder. The feeder feeds a conveyor belt to the air and electrostatic plant. About 3 to 4 tons of concentrates are recovered from 100 yards of material.

I panned about 2 pounds of concentrate and recovered 18 pieces of free gold visible to the unaided eye. A 10 power loop showed a number of smaller particles. The largest visible particle was about 1mm x 2mm 1mm in diameter.

Operations currently consist of running test lots from the center of Muggins Wash from the surface to bed rock. They are being limited to testing the center of the wash because it is a "cherry stem" within a wilderness study area. Every plant and weed has been flagged and location recorded on video tape to prevent degradation of the wilderness potential. The operators are reportedly trying to prove both to themselves and the BLM that a profitable placer operation can be developed.

Date: April 24, 1990

Ken A. Phillips
(Signature) AzDMMR