



CONTACT INFORMATION

Mining Records Curator
Arizona Geological Survey
1520 West Adams St.
Phoenix, AZ 85007
602-771-1601
<http://www.azgs.az.gov>
inquiries@azgs.az.gov

The following file is part of the

Arizona Department of Mines and Mineral Resources Mining Collection

ACCESS STATEMENT

These digitized collections are accessible for purposes of education and research. We have indicated what we know about copyright and rights of privacy, publicity, or trademark. Due to the nature of archival collections, we are not always able to identify this information. We are eager to hear from any rights owners, so that we may obtain accurate information. Upon request, we will remove material from public view while we address a rights issue.

CONSTRAINTS STATEMENT

The Arizona Geological Survey does not claim to control all rights for all materials in its collection. These rights include, but are not limited to: copyright, privacy rights, and cultural protection rights. The User hereby assumes all responsibility for obtaining any rights to use the material in excess of "fair use."

The Survey makes no intellectual property claims to the products created by individual authors in the manuscript collections, except when the author deeded those rights to the Survey or when those authors were employed by the State of Arizona and created intellectual products as a function of their official duties. The Survey does maintain property rights to the physical and digital representations of the works.

QUALITY STATEMENT

The Arizona Geological Survey is not responsible for the accuracy of the records, information, or opinions that may be contained in the files. The Survey collects, catalogs, and archives data on mineral properties regardless of its views of the veracity or accuracy of those data.

PRINTED: 08/16/2002

ARIZONA DEPARTMENT OF MINES AND MINERAL RESOURCES AZMILS DATA

PRIMARY NAME: SWISSHELM MTN #6

ALTERNATE NAMES:

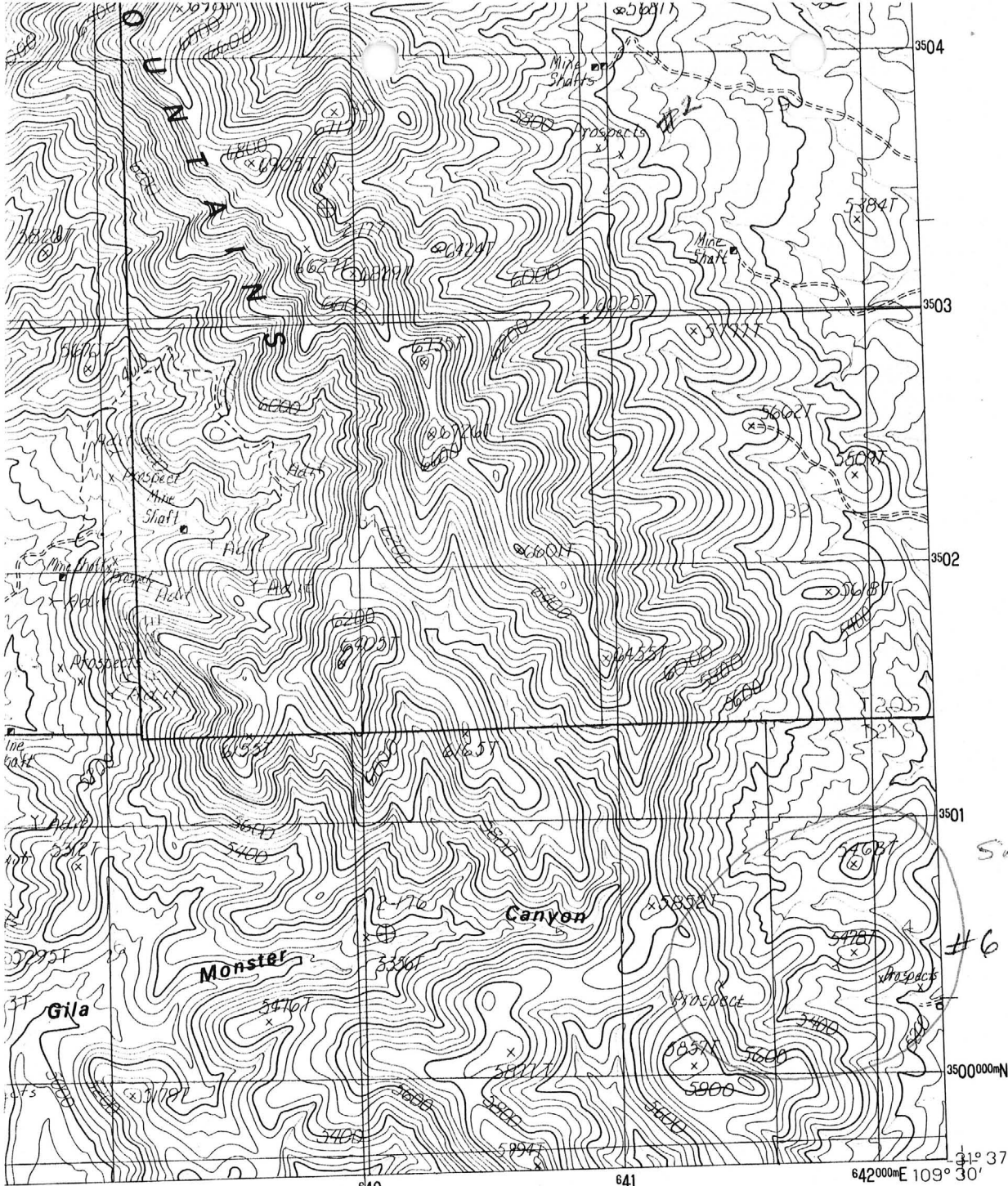
COCHISE COUNTY MILS NUMBER: 885

LOCATION: TOWNSHIP 21 S RANGE 28 E SECTION 4 QUARTER SW
LATITUDE: N 31DEG 37MIN 55SEC LONGITUDE: W 109DEG 30MIN 05SEC
TOPO MAP NAME: SWISSHELM MOUNTAIN - 7.5 MIN

CURRENT STATUS: RAW PROSPECT

COMMODITY:
GOLD
SILVER

BIBLIOGRAPHY:
ADMMR SWISSHELM MTN #6 FILE
GILLETTE R S, 1983 U OF A THESIS
CLAIMS EXTEND INTO SEC 5



Swisshelm Mtn #6

#6



QUADRANGLE LOCATION

1	2	3	1 Squarotop Hills West
			2 Squarotop Hills East
			3 Stanford Canyon
4		5	4 Efrida
			5 Bruno Peak
			6 McNeal
6	7	8	7 Letic Canyon
			8 Pedregosa Mountains West

ADJOINING 7.5' QUADRANGLE NAMES

INTERIOR-GEOLOGICAL SURVEY, RESTON, VIRGINIA-1986

ROAD LEGEND

- Improved Road
- Unimproved Road
- Trail
- Ⓜ Interstate Route Ⓜ U.S. Route Ⓜ State Route

SWISSHELM MOUNTAIN, ARIZONA

PROVISIONAL EDITION 1986

31109-F5-TF-024