



CONTACT INFORMATION

Mining Records Curator
Arizona Geological Survey
1520 West Adams St.
Phoenix, AZ 85007
602-771-1601
<http://www.azgs.az.gov>
inquiries@azgs.az.gov

The following file is part of the

Arizona Department of Mines and Mineral Resources Mining Collection

ACCESS STATEMENT

These digitized collections are accessible for purposes of education and research. We have indicated what we know about copyright and rights of privacy, publicity, or trademark. Due to the nature of archival collections, we are not always able to identify this information. We are eager to hear from any rights owners, so that we may obtain accurate information. Upon request, we will remove material from public view while we address a rights issue.

CONSTRAINTS STATEMENT

The Arizona Geological Survey does not claim to control all rights for all materials in its collection. These rights include, but are not limited to: copyright, privacy rights, and cultural protection rights. The User hereby assumes all responsibility for obtaining any rights to use the material in excess of "fair use."

The Survey makes no intellectual property claims to the products created by individual authors in the manuscript collections, except when the author deeded those rights to the Survey or when those authors were employed by the State of Arizona and created intellectual products as a function of their official duties. The Survey does maintain property rights to the physical and digital representations of the works.

QUALITY STATEMENT

The Arizona Geological Survey is not responsible for the accuracy of the records, information, or opinions that may be contained in the files. The Survey collects, catalogs, and archives data on mineral properties regardless of its views of the veracity or accuracy of those data.

PRINTED: 08/16/2002

ARIZONA DEPARTMENT OF MINES AND MINERAL RESOURCES AZMILS DATA

PRIMARY NAME: SUNRISE G6-11

ALTERNATE NAMES:

PIMA COUNTY MILS NUMBER: 1139

LOCATION: TOWNSHIP 21 S RANGE 10 E SECTION 8 QUARTER NE
LATITUDE: N 31DEG 37MIN 18SEC LONGITUDE: W 111DEG 20MIN 12SEC
TOPO MAP NAME: ARIVACA - 7.5 MIN

CURRENT STATUS: UNKNOWN

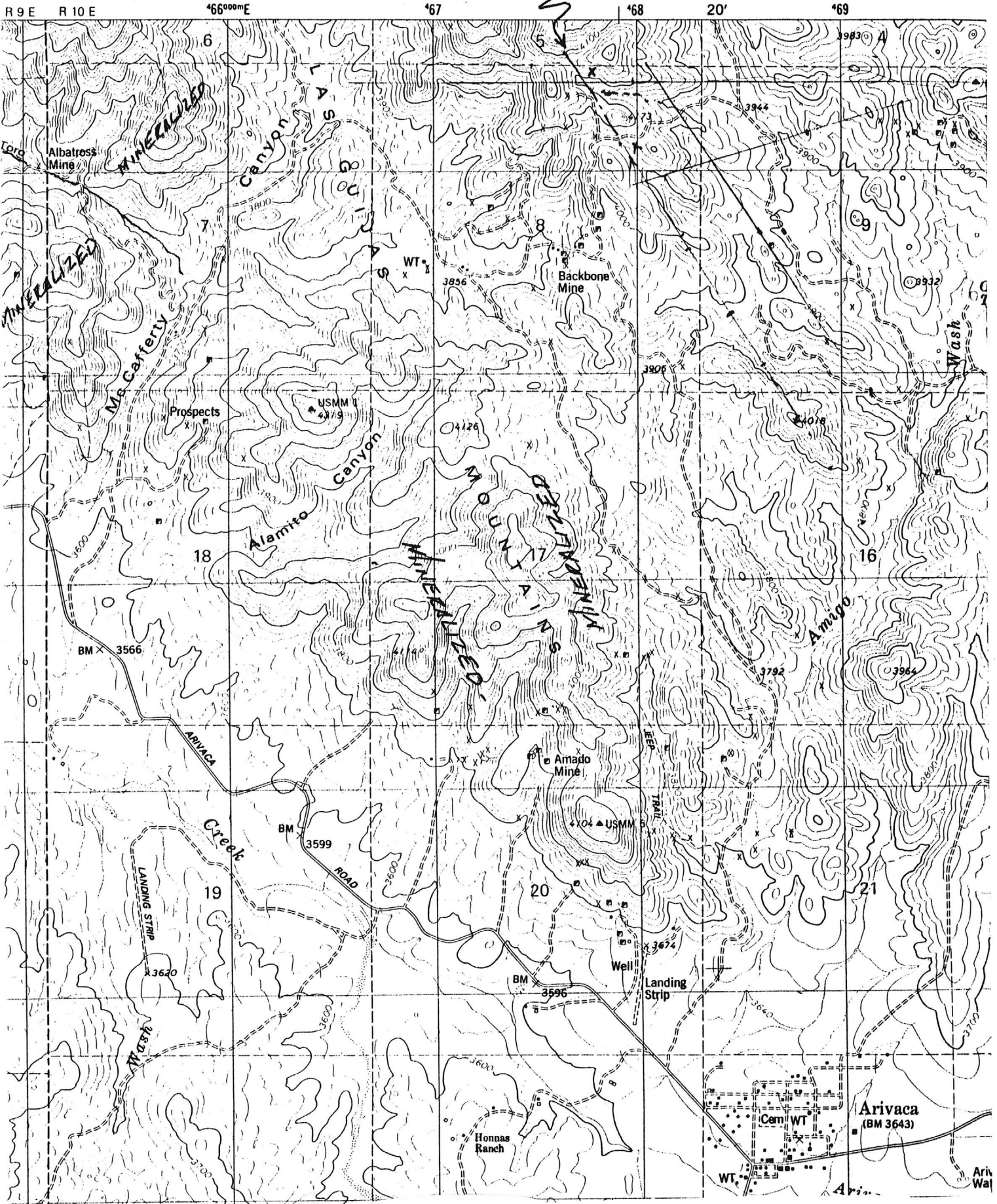
COMMODITY:
GOLD

BIBLIOGRAPHY:
ADMMR SUNRISE G6-11 FILE

UNITED STATES
DEPARTMENT OF THE INTERIOR
GEOLOGICAL SURVEY

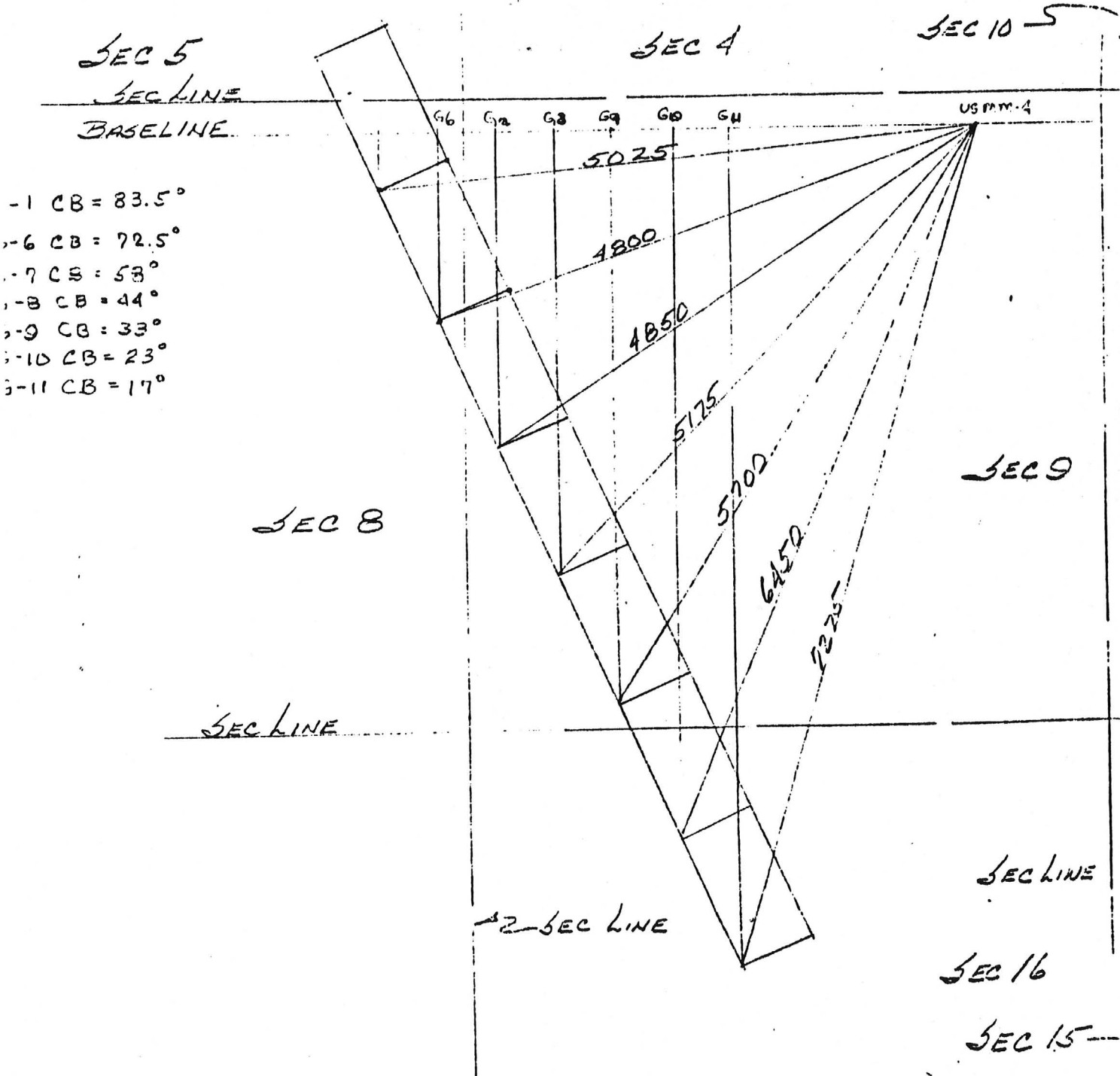
ARIVACA QUADRANGLE
7.5' SERIES -

☿ SUNRISE 91-911



PHASE

CLAIMS G-6 --- G-11 TOWNSHIP 30 S RANGE 10 E
 TRIVACA MINING DISTRICT PIMA CO. ARIZONA.



- 1 CB = 83.5°
- 6 CB = 72.5°
- 7 CB = 58°
- 8 CB = 44°
- 9 CB = 33°
- 10 CB = 23°
- 11 CB = 17°

SCALE 1" = 1200'

7800 1052

SUNRISE G6-11

PIMA COUNTY

CJH WR 7/11/86: Visitor: West Twohey, President, Geophase, Inc. 2700 Nielson Way #1736, Santa Monica, CA 90405, phone (213) 396-1096. Tucson phone 824-3371. Reinstated six Au claims, Sunrise G-6 thru G-11, in the Las Guijas district, Pima County (see attachments) in Sec 8, 9, 16, T20S R10E. Claimant is Geophase, Inc. at above address. Also discussed claim location on State land.
