



## **CONTACT INFORMATION**

Mining Records Curator  
Arizona Geological Survey  
1520 West Adams St.  
Phoenix, AZ 85007  
602-771-1601  
<http://www.azgs.az.gov>  
[inquiries@azgs.az.gov](mailto:inquiries@azgs.az.gov)

The following file is part of the

Arizona Department of Mines and Mineral Resources Mining Collection

## **ACCESS STATEMENT**

These digitized collections are accessible for purposes of education and research. We have indicated what we know about copyright and rights of privacy, publicity, or trademark. Due to the nature of archival collections, we are not always able to identify this information. We are eager to hear from any rights owners, so that we may obtain accurate information. Upon request, we will remove material from public view while we address a rights issue.

## **CONSTRAINTS STATEMENT**

The Arizona Geological Survey does not claim to control all rights for all materials in its collection. These rights include, but are not limited to: copyright, privacy rights, and cultural protection rights. The User hereby assumes all responsibility for obtaining any rights to use the material in excess of "fair use."

The Survey makes no intellectual property claims to the products created by individual authors in the manuscript collections, except when the author deeded those rights to the Survey or when those authors were employed by the State of Arizona and created intellectual products as a function of their official duties. The Survey does maintain property rights to the physical and digital representations of the works.

## **QUALITY STATEMENT**

The Arizona Geological Survey is not responsible for the accuracy of the records, information, or opinions that may be contained in the files. The Survey collects, catalogs, and archives data on mineral properties regardless of its views of the veracity or accuracy of those data.

04/07/88

ARIZONA DEPARTMENT OF MINES AND MINERAL RESOURCES FILE DATA

PRIMARY NAME: SUN LIMESTONE

ALTERNATE NAMES:

LA PAZ COUNTY MILS NUMBER: 821

LOCATION: TOWNSHIP 2 S RANGE 23 W SECTION 9 QUARTER ALL  
LATITUDE: N 33DEG 22MIN SEC LONGITUDE: W 114DEG 37MIN SEC  
TOPO MAP NAME: CIBOLA - 7.5 MIN

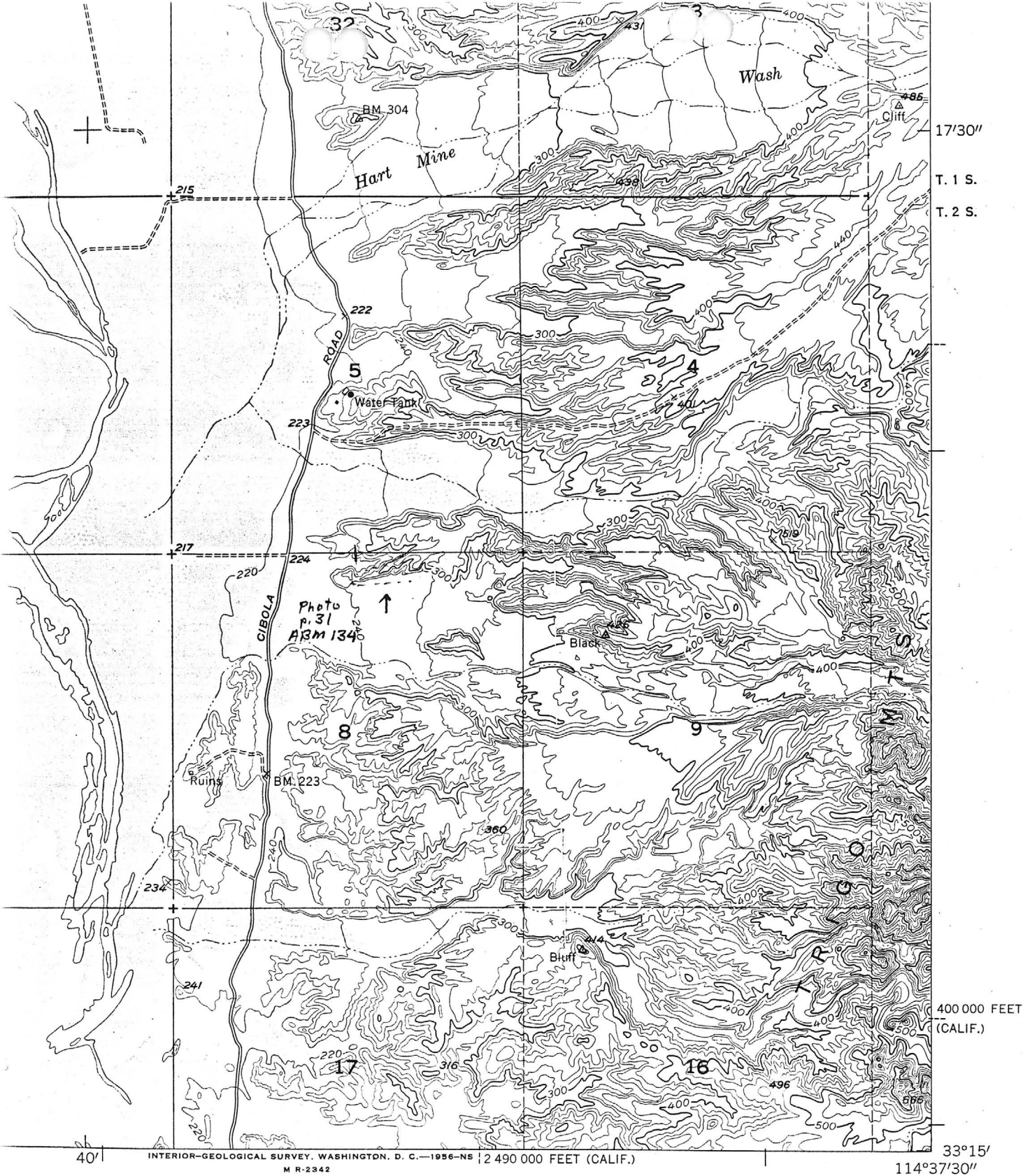
CURRENT STATUS: RAW PROSPECT

COMMODITY:

CALCIUM LIMESTONE

BIBLIOGRAPHY:

ADMMR SUN LIMESTONE FILE



INTERIOR-GEOLOGICAL SURVEY, WASHINGTON, D. C.—1956-NS 12 490 000 FEET (CALIF.)  
M R-2342

400 000 FEET  
(CALIF.)

ROAD CLASSIFICATION

- Heavy-duty.....—————
- Medium-duty.....—————
- Light-duty.....—————
- Unimproved dirt.....=====
- U. S. Route (Shield symbol)
- State Route (Circle symbol)



QUADRANGLE LOCATION

CIBOLA, ARIZ.—CALIF.  
SW/4 CIBOLA 15' QUADRANGLE  
N3315—W11437.5/7.5

(PICACHO 1:62,500)

35

SUN LIMESTONE

LA PAZ COUNTY

NJN WR 2/19/88: Provided information to M. L. West, 24323 County Road S6, Dolores, CO 81323 on staking of limestone deposits in Arizona. Mr. West is interested in acquiring some white, chalky limestone deposits west of the Trigo Mtn in La Paz County. These may be some of the "lost" limestone deposits we were unable to pin down for Industrial Minerals publication. Mr. West promised he would visit and provide additional information after acquiring his land position.

-----

NJN WR 3/4/88: M. L. West, 24323 Country Rd S6, Dolores, Colorado 81323, visited and reported he has staked the Sun Limestone (file) La Paz County. Included on the property is the outcrop shown in the picture in AZBM Bull 134, "Geology of Southern Yma County" page 31. Preliminary analysis on the white, fine grained chalky limestone indicates a content of 86% calcium carbonate, less than 1% MgO. Upper beds are fossiliferous, with shells up to 1/2 inch. Many exposures show the limestone to be 35' thick, limited exposures indicate it may be 70' thick. If work on samples Mr. West has taken are promising and he holds the property for a year, he will do some drilling for assessment work next year. His plans for the property will be to either mine and process, mone and sell it or joint venture with an established company.

-----