



## **CONTACT INFORMATION**

Mining Records Curator  
Arizona Geological Survey  
1520 West Adams St.  
Phoenix, AZ 85007  
602-771-1601  
<http://www.azgs.az.gov>  
[inquiries@azgs.az.gov](mailto:inquiries@azgs.az.gov)

The following file is part of the

Arizona Department of Mines and Mineral Resources Mining Collection

## **ACCESS STATEMENT**

These digitized collections are accessible for purposes of education and research. We have indicated what we know about copyright and rights of privacy, publicity, or trademark. Due to the nature of archival collections, we are not always able to identify this information. We are eager to hear from any rights owners, so that we may obtain accurate information. Upon request, we will remove material from public view while we address a rights issue.

## **CONSTRAINTS STATEMENT**

The Arizona Geological Survey does not claim to control all rights for all materials in its collection. These rights include, but are not limited to: copyright, privacy rights, and cultural protection rights. The User hereby assumes all responsibility for obtaining any rights to use the material in excess of "fair use."

The Survey makes no intellectual property claims to the products created by individual authors in the manuscript collections, except when the author deeded those rights to the Survey or when those authors were employed by the State of Arizona and created intellectual products as a function of their official duties. The Survey does maintain property rights to the physical and digital representations of the works.

## **QUALITY STATEMENT**

The Arizona Geological Survey is not responsible for the accuracy of the records, information, or opinions that may be contained in the files. The Survey collects, catalogs, and archives data on mineral properties regardless of its views of the veracity or accuracy of those data.

PRINTED: 08/16/2002

ARIZONA DEPARTMENT OF MINES AND MINERAL RESOURCES AZMILS DATA

PRIMARY NAME: SUNDAY ET AL

ALTERNATE NAMES:

PINAL COUNTY MILS NUMBER: 730

LOCATION: TOWNSHIP 5 S RANGE 2 E SECTION 8 QUARTER NE  
LATITUDE: N 33DEG 00MIN 36SEC LONGITUDE: W 112DEG 10MIN 08SEC  
TOPO MAP NAME: ENID - 7.5 MIN

CURRENT STATUS: UNKNOWN

COMMODITY:  
MICA

BIBLIOGRAPHY:  
ADMMR SUNDAY ET AL FILE

FIRST CHANCE #1

PINAL COUNTY  
T5S R2E Sec. 9

KAP WR 8/12/83: E. M. Industries was given a sample of mica from Nick Carter's claims in the Palo Verde Mtns. The claims are the Janice, First Chance #1, Second Chance and Ike. The claims are in T4S and T5S R2E. The sample did not pass the initial tests, however, the sample had been processed through his mill and it would be likely that the mica particle surfaces were very scratched. I recommended that he collect 10 unprocessed samples from the claim group.

In the 1983, July 14, BLM microfiche Mr. Carter was listed as Cartere.

JANICE CLAIM

PINAL COUNTY

KAP WR 8/12/83: E. M. Industries was given a sample of mica from Nick Carter's claims in the Palo Verde Mtns. The claims are the Janice, First Chance #1, Second Chance and Ike. The claims are in T4S and T5S R2E. The sample did not pass the initial tests, however, the sample had been processed through his mill and it would be likely that the mica particle surfaces were very scratched. I recommended that he collect 10 unprocessed samples from the claim group.

In the 1983, July 14, BLM microfiche Mr. Carter was listed as Cartere.

SECOND CHANCE CLAIM

PINAL COUNTY

KAP WR 8/12/83: E. M. Industries was given a sample of mica from Nick Carter's claims in the Palo Verde Mtns. The claims are the Janice, First Chance #1, Second Chance and Ike. The claims are in T4S and T5S R2E. The sample did not pass the initial tests, however, the sample had been processed through his mill and it would be likely that the mica particle surfaces were very scratched. I recommended that he collect 10 unprocessed samples from the claim group.

In the 1983, July 14, BLM microfiche Mr. Carter was listed as Cartere.

IKE CLAIM

PINAL COUNTY  
T4S R2E Sec. 2

KAP WR 8/12/83: E. M. Industries was given a sample of mica from Nick Carter's claims in the Palo Verde Mts. The claims are the Janice, First Chance #1, Second Chance and Ike. The claims are in T4S and T5S R2E. The sample did not pass the initial tests, however the sample had been processed through his mill and it would be likely that the mica particle surfaces were very scratched. I recommended that he collect 10 unprocessed samples from the claim group.

In the 1983, July 14, BLM microfiche Mr. Carter was listed as Cartere.



SUNDAY ET AL

6/84

PINAL COUNTY

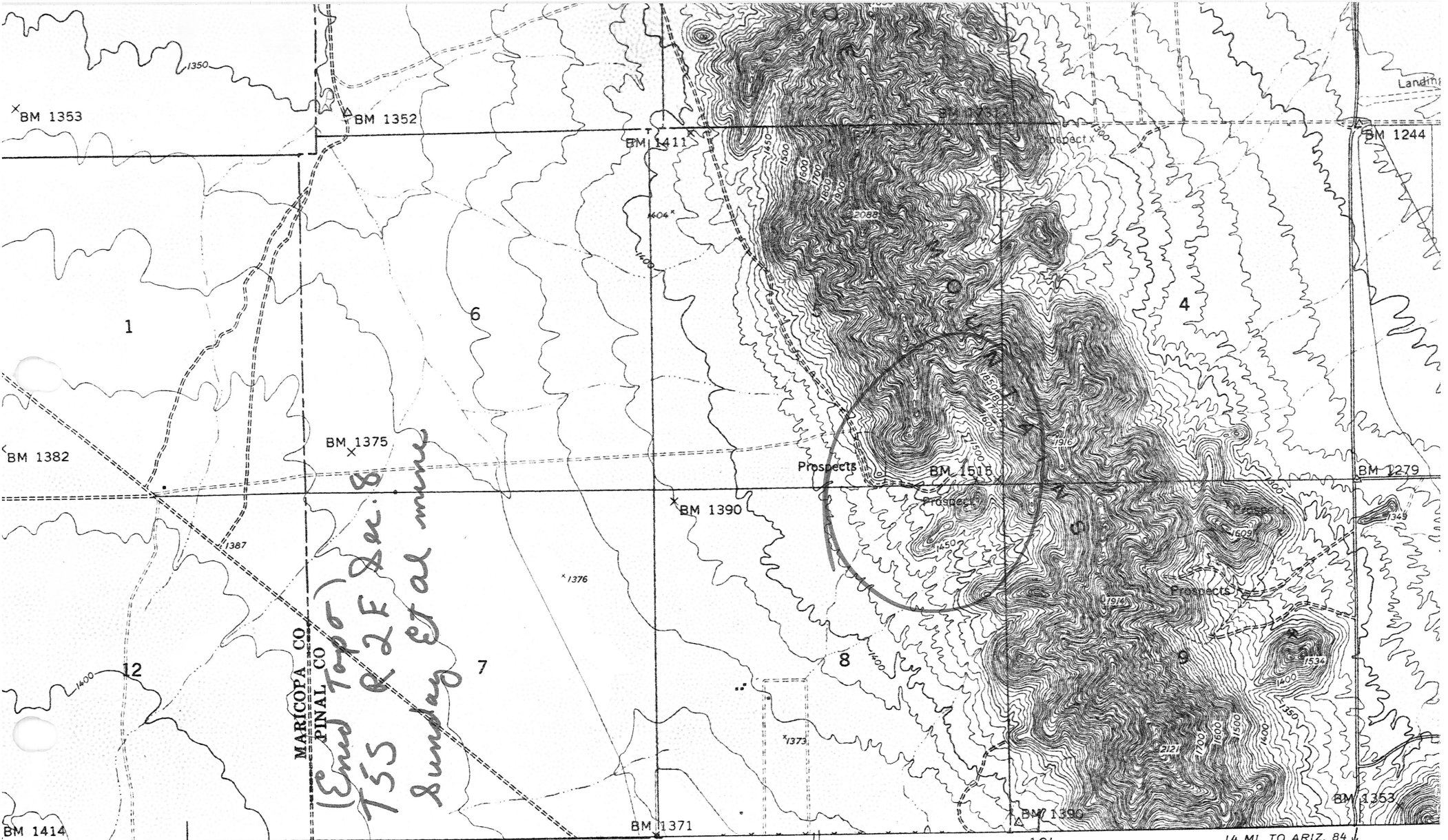
T5S R2E Sec 8

(Sunday, Monday, Tuesday, Wednesday, Thursday, Friday, Saturday Claims)

MILS Pinal County Index # 730

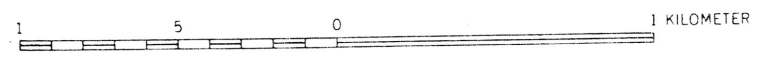
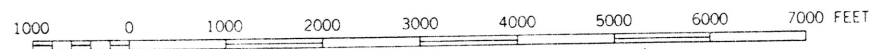
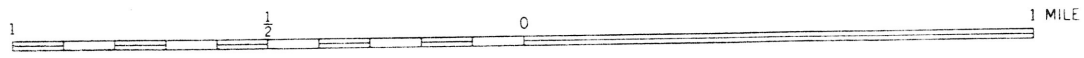
Enid topo map (Included in file)

See: Nicholas Carter (yellow card)

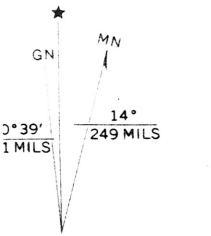


12'30" R.1.E. R.2.E. 388 (ANTELOPE PEAK 1:62 500) 390 10' 14 MI. TO ARIZ. 84

SCALE 1:24000



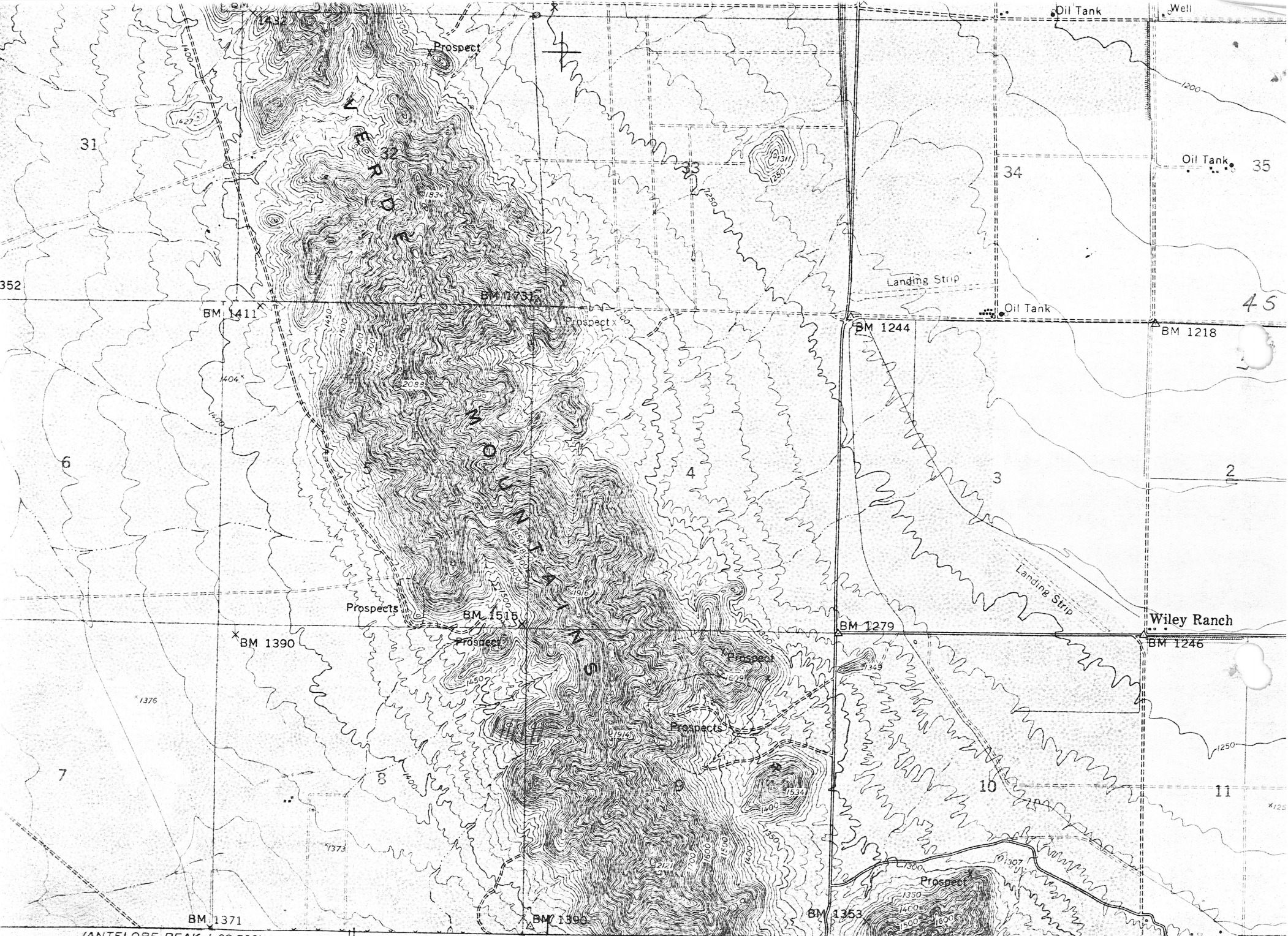
CONTOUR INTERVAL 10 FEET.  
DATUM IS MEAN SEA LEVEL



AND 1967 MAGNETIC NORTH



QUADRANGLE LOCATION



(ANTELOPE PEAK 1:62 500)  
3549 1

SCALE 1:24000

2E

14 MI. TO ARIZ. 84

393 ● INTERIOR—GEOLOGICAL SURVEY WASHINGTON, D. C.—1968

394000m. E.

112





STATE OF ARIZONA  
DEPARTMENT OF MINERAL RESOURCES  
MINERAL BUILDING, FAIRGROUNDS  
PHOENIX, ARIZONA 85007

602/271-3791

MEMORANDUM:

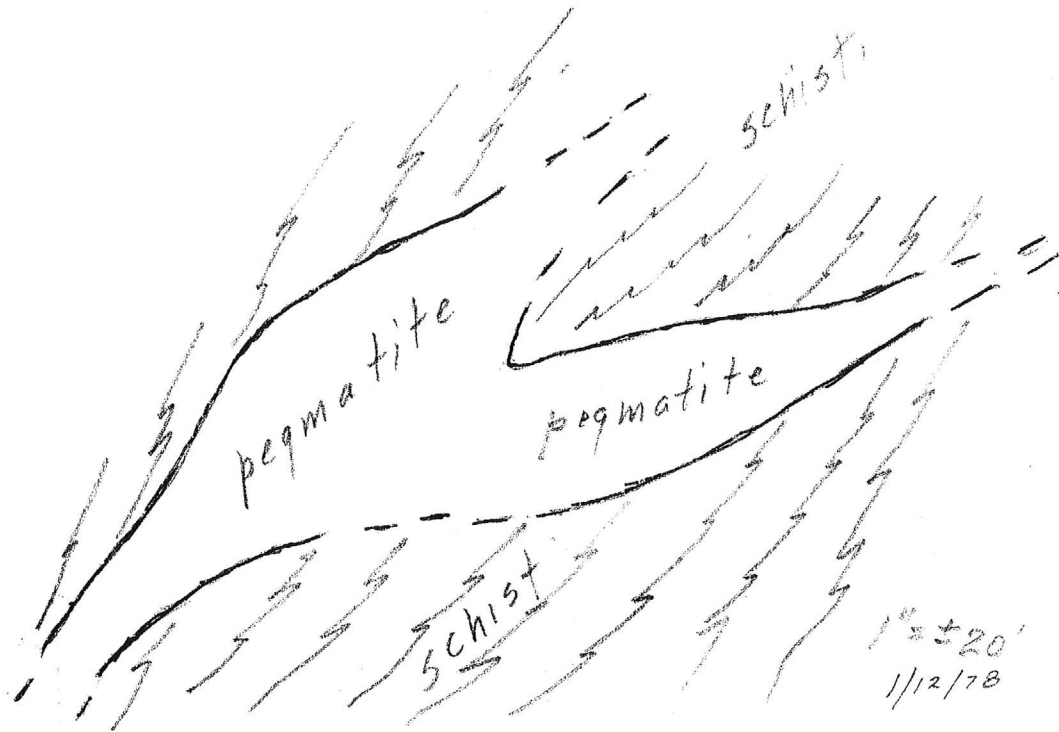
To: John H. Jett, Director  
From: Glen Walker, Field Engineer  
Subject: Nick Carter's Mica Property & Mill  
Date: January 13, 1978

*Maricopa  
Mica Mill  
(file)  
Pinal Co.*

Mr. Carter lives in Maricopa and during the past several years has built a 1 ton/hr. mica grinding and concentrating plant. It consists of a 10 x 16 jaw crusher, which discharges to a bucket elevator, to 3' x 6' cylindrical bin, to a 10" A. C.-hammer mill, to a homemade 18" x 6' rod mill, to a Humphrey spiral the con goes to another spiral the tail to waste, the con from the 2nd spiral is the finished product the tail is returned to the rod mill.

After making a suggestion or two on the milling circuit I accompanied Mr. Carter to his seven unpatented (Sunday, Monday, Tuesday, Wednesday, Thursday, Friday, Saturday) claims 14 miles southwest of Maricopa. They are on the west side of the Palo Verde Mountains in Sec. 8, T5S, R2E, Pinal County and are shown on the accompanying map which is a portion of the Enid, Arizona quadrangle.

The oldest formation noted is a schist striking, in general, N30° E, and dipping up to 60° both east and west. The schist is intruded by rather fine grained granite dikes containing quartz-albite-mica pegmatites. Although the granitic dikes are quite extensive the pegmatites are rarely more than 15 ft. wide and 200 ft. long. For a few feet on both sides of the pegmatites the granite contains up to an estimated 10% muscovite mica (not sericite) in flakes rarely exceeding 1/8". The pegmatites contain coarser muscovite books up to 2" across which occur closely associated with albite in limited zones and not disseminated as in the granite. In placer where the granite is narrow, 4 ft. or less, the schist also contains considerable small flakes of both muscovite and biotite. The sketch below shows the relations at one of the largest pegmatite outcrops on top of the ridge.



Recently Mr. Carter has been approached by a buyer of the mill and claims it was, therefore, suggested he start mining and milling on one of the better showings. He said he has a ready market in Phoenix, for - 100 mesh mica as an ingredient fo drywall cement.

Tucson Copy  
GW Copy

GW/ap