



CONTACT INFORMATION

Mining Records Curator
Arizona Geological Survey
1520 West Adams St.
Phoenix, AZ 85007
602-771-1601
<http://www.azgs.az.gov>
inquiries@azgs.az.gov

The following file is part of the

Arizona Department of Mines and Mineral Resources Mining Collection

ACCESS STATEMENT

These digitized collections are accessible for purposes of education and research. We have indicated what we know about copyright and rights of privacy, publicity, or trademark. Due to the nature of archival collections, we are not always able to identify this information. We are eager to hear from any rights owners, so that we may obtain accurate information. Upon request, we will remove material from public view while we address a rights issue.

CONSTRAINTS STATEMENT

The Arizona Geological Survey does not claim to control all rights for all materials in its collection. These rights include, but are not limited to: copyright, privacy rights, and cultural protection rights. The User hereby assumes all responsibility for obtaining any rights to use the material in excess of "fair use."

The Survey makes no intellectual property claims to the products created by individual authors in the manuscript collections, except when the author deeded those rights to the Survey or when those authors were employed by the State of Arizona and created intellectual products as a function of their official duties. The Survey does maintain property rights to the physical and digital representations of the works.

QUALITY STATEMENT

The Arizona Geological Survey is not responsible for the accuracy of the records, information, or opinions that may be contained in the files. The Survey collects, catalogs, and archives data on mineral properties regardless of its views of the veracity or accuracy of those data.

02/26/87

ARIZONA DEPARTMENT OF MINES AND MINERAL RESOURCES FILE DATA

PRIMARY NAME: SUNDAY CLAIM GROUP

ALTERNATE NAMES:

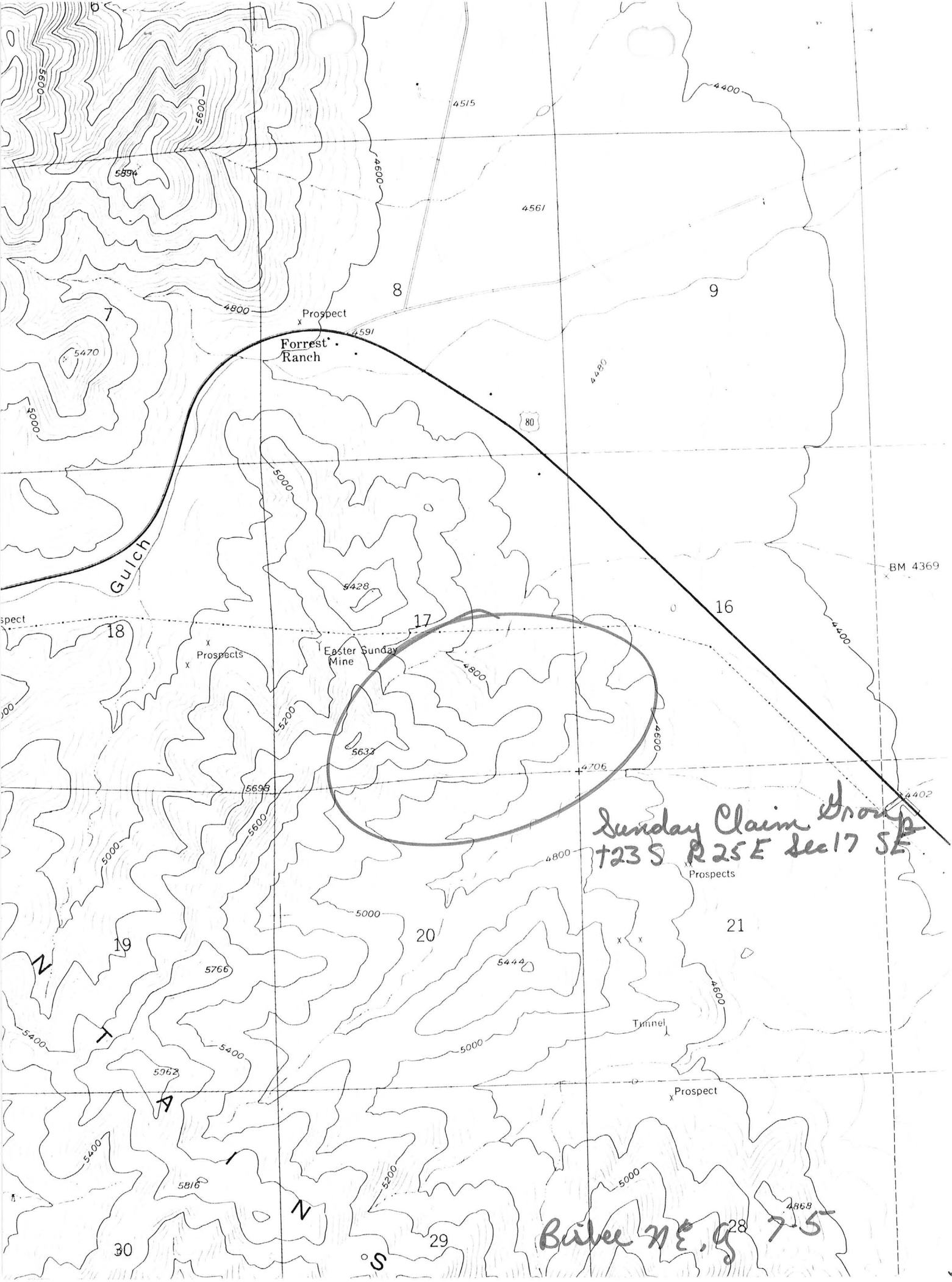
COCHISE COUNTY MILS NUMBER: 754

LOCATION: TOWNSHIP 23 S RANGE 25 E SECTION 17 QUARTER SE
LATITUDE: N DEG MIN SEC LONGITUDE: W DEG MIN SEC
TOPO MAP NAME: BISBEE NE - 7.5 MIN

CURRENT STATUS: UNKNOWN

COMMODITY:
GOLD

BIBLIOGRAPHY:
ADMMR SUNDAY CLAIM GROUP FILE



Sunday Claim Group
T23S R25E Sec 17 SE

Baker NE. of 7-5

PRINTED: 08/16/2002

ARIZONA DEPARTMENT OF MINES AND MINERAL RESOURCES AZMILS DATA

PRIMARY NAME: SUNDAY CLAIM GROUP

ALTERNATE NAMES:

COCHISE COUNTY MILS NUMBER: 754

LOCATION: TOWNSHIP 23 S RANGE 25 E SECTION 17 QUARTER SE
LATITUDE: N 31DEG 25MIN 36SEC LONGITUDE: W 109DEG 49MIN 11SEC
TOPO MAP NAME: BISBEE NE - 7.5 MIN

CURRENT STATUS: UNKNOWN

COMMODITY:
GOLD

BIBLIOGRAPHY:
ADMMR SUNDAY CLAIM GROUP FILE

SUNDAY CLAIM GROUP

COCHISE COUNTY

NJN WR 4/12/85: Harold and Beverly Best (c) visited and brought in reports and maps on three of their properties, the Sunday Claim Group (f) Cochise Co., Puppy Dog (Black Butte (f)) Maricopa County and Table Mtn. (f) Pinal County.



AMERICA WEST GEO-ASSOCIATES



EXPLORATION/DEVELOPMENT CONSULTANTS

850

GEOLOGICAL EVALUATION REPORT, SUNDAY CLAIM GROUP
COCHISE COUNTY, ARIZONA

PREPARED FOR CPEST RESOURCES,
BY RICHARD M. RENN

DEPARTMENT MINERAL RESOURCES

MINERAL BLDG. FAIR GROUNDS

PHOENIX, ARIZONA 85007

DONATED 4/85 BY HAROLD BEST

RICHARD RENN, CERTIFIED PROFESSIONAL GEOLOGIST
10817 CIELITO LINDO N.E., ALBUQUERQUE, NM 87111, (505) 292-3899

GEOLOGICAL EVALUATION REPORT
SUNDAY CLAIM GROUP
A Gold Prospect

INTRODUCTION

Crest Resources' Sunday claim group is located in Cochise County, southeastern Arizona in Township ²33 South, Range 25 East, Section 17 (Figure 1). The property consists of approximately 180 acres that underlie nine lode mining claims which are located in the southern Mule Mountains. The Sunday claims are situated one-half mile southeast of U.S. Route 80, four miles east of the town of Bisbee, Arizona and 19 miles northwest of Douglas, Arizona. Topography is comprised of moderate to steep, rolling hills. Vegetation around the Sunday claims is sparse and poorly developed, consisting of grease bush, various cacti and desert grasses. At present, cattle grazing is the primary use of the land.

HISTORY

The Sunday claims are contained within the Bisbee/Warren Mining District, which was established in 1876 with the discovery of extensive copper mineralization on Sacramento Hill, located about four miles west of the claims. Mining and development continued on many individual properties until 1900 when Phelps Dodge Corporation began consolidating the Bisbee/Warren District. By 1920, Phelps Dodge controlled most of the district and was in the process of open pit mining the mineralized portions of the Cretaceous quartz monzonite stock and the surrounding Paleozoic limestone country rock that has also received significant copper mineralization.

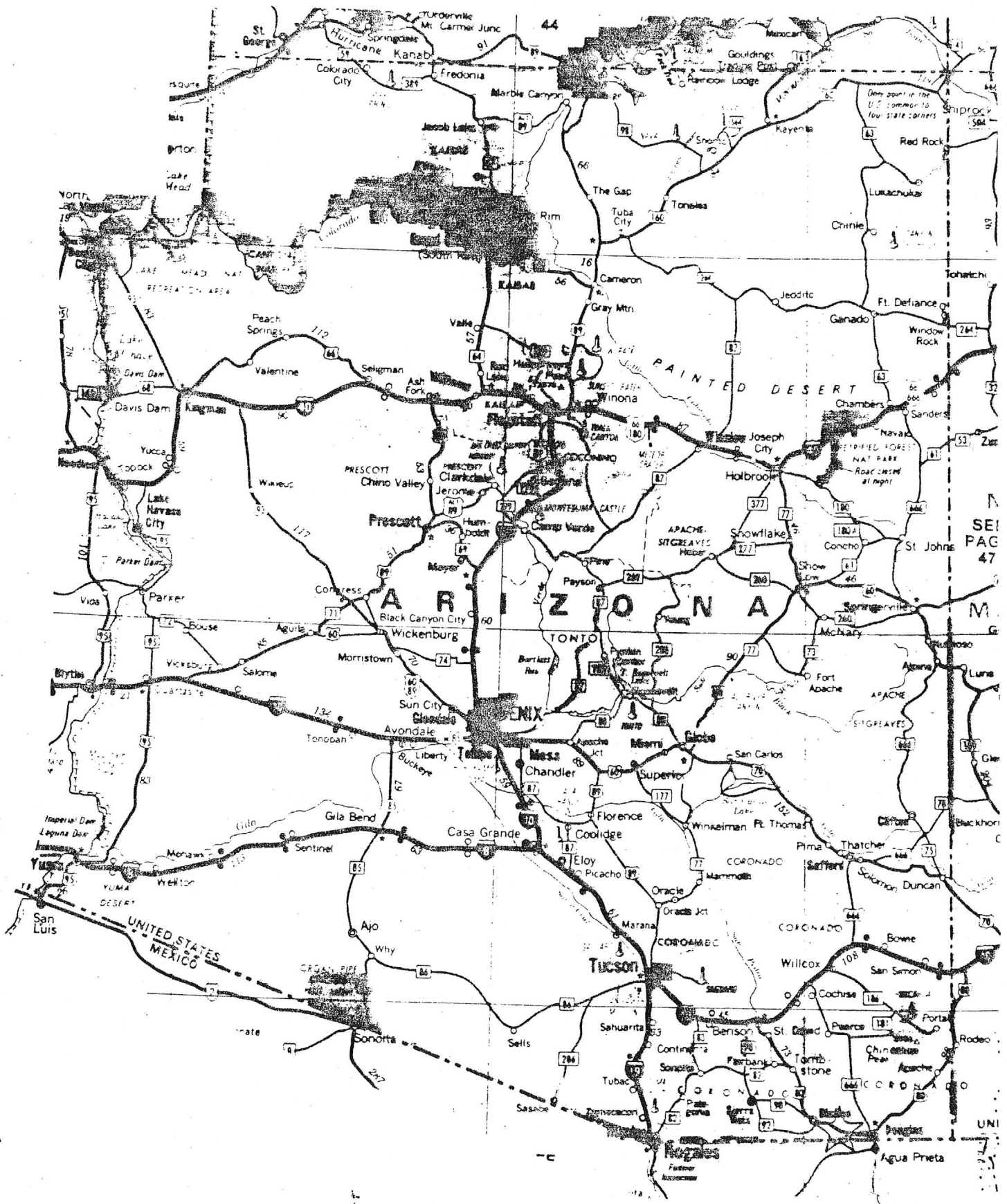


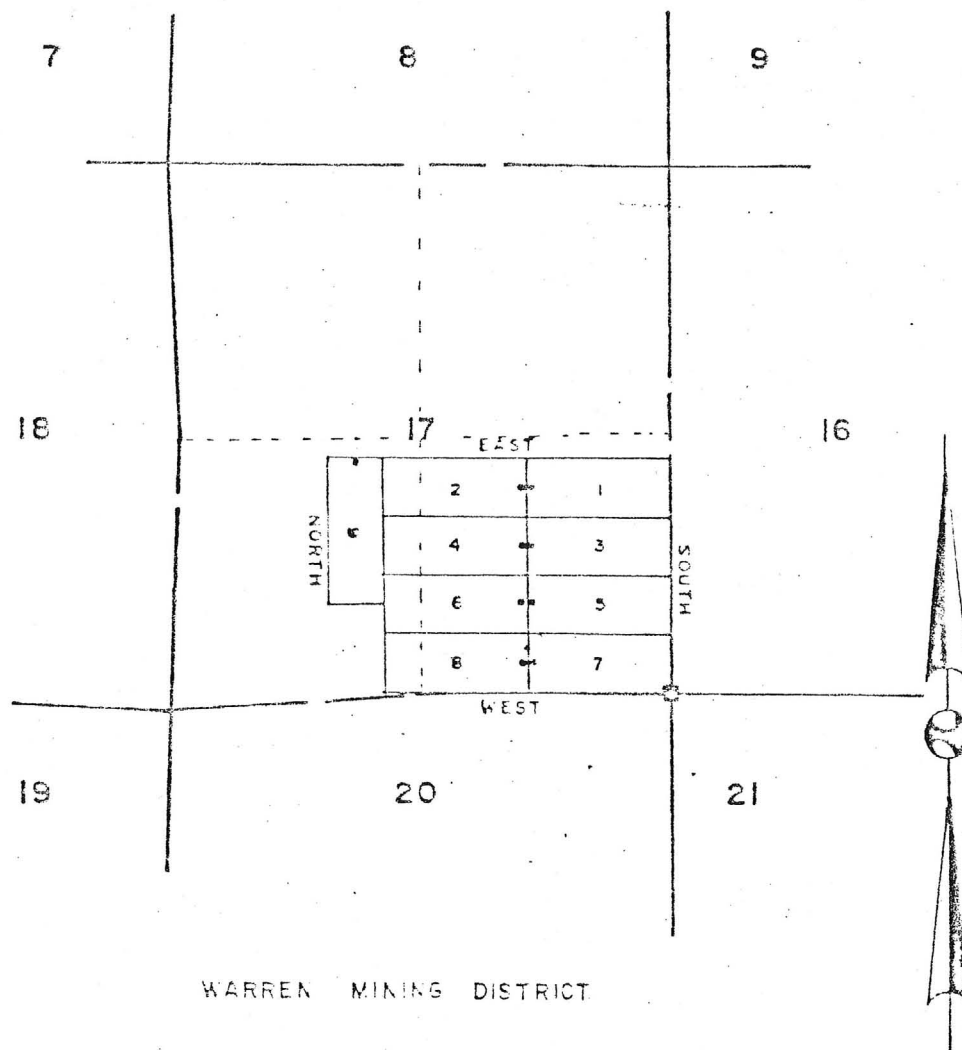
Figure 1. GENERALIZED LOCATION MAP SUNDAY TRUCKING, ARIZONA

ANDAY Claim Group
COCHISE COUNTY, ARIZONA

NOTES:

1. This survey was accomplished using a bruntion and chain.
2. All corners and end centers are marked by a 2" X 2" X 54" wooden post.
3. All location monuments are marked by a 4" X 4" X 54" wooden post set 25 feet to either side of end centers.
4. All claims are 600 feet in width by 1500 feet in length.

T23S, R25E



SCALE: 1"=2000'

SECTION 17

T 23 S, R 25 E

GILA AND SALT RIVER MERIDIAN

It was about 1900 that the silicified, pyritized, brecciated and vertically standing sandstones, located four miles east of Bisbee, were discovered to be auriferous. This resulted in the location of the Easter Sunday Mine, which lies immediately west of Crest Resources' Sunday claims. The Easter Sunday Mine produced approximately 2,000 tons of auriferous flux ore between 1900-1911. Mine developments include a haulage tunnel that is a few hundred feet in length and runs into a steep northern hill slope. Above the haulage tunnel are a series of irregular stopes and raises that extend to the surface. The mine has remained idle since 1911.

STRATIGRAPHY/STRUCTURE

Rocks outcropping in area of the Sunday claims include Cretaceous marine limestones, shales, and sandstones of the Morita, Mural, and Cintura Formations, late Tertiary Jasperoids and Quaternary alluvium. Structurally, the claim area lies in the late Cretaceous-Tertiary Overthrust Belt, in the Basin and Range Province and along a Cretaceous zone of weakness or linement that resulted in the localization of the nearby copper porphyry. All of these structures are present in the Sunday prospect area and each have had some effect on the localization of the mineralization found at the property. The Sunday claims lie along the crest of a monocline where the mineralization is localized along the hinge line and sediments dip near vertical. It was most probably this structural adjustment that fractured the host Morita sandstones and later allowed for the upward migration and invasion of siliceous, gold-bearing solutions.

MINERALIZATION

Mineralization in the Sunday prospect area occurs in one, possibly two, broad, parallel fracture zones situated in sandstones of the Morita Formation. These sandstones have been silicified and pyritized by auriferous solutions that migrated along the shear zones, which probably extend to the basement rocks. The age of this mineralization is late Tertiary. On outcrop, mineralization includes the introduction of silica, which fused sand grains to form a "sandstone jasper." Pyrite mineralization in the sandstone is also quite extensive with individual cubes attaining widths up to one inch, indicating the disseminated nature of the mineralization. Mineralized structures in the area are between 100 and 200 feet in width and trend from the portal of the Easter Sunday Mine at least 3,000 feet southeast, apparently onto the Sunday claims.

Geochemical sample data familiar to this author, taken from the portal of the Easter Sunday Mine and dump revealed a .515 and .9 oz/ton Au anomalies respectively.

CONCLUSIONS/RECOMMENDATIONS

Mineralized structures in the Morita sandstone apparently trend to the southeast onto Crest Resources' Sunday claims and present an excellent potential for economic grade, precious metals mineralization. Therefore, it is recommended that a detailed geologic mapping and geochemical sampling program of the Sunday claims be undertaken to determine the geometry of any shear zones present and evaluate the associated precious metals potential. At the conclusion of this initial, exploratory phase, appropriate drilling targets can be selected and evaluated.

JOB STATEMENT

On February 14, 1985, I was contacted by Mr. Harold Best of Crest Resources Inc. to prepare a preliminary geologic report for his Sunday claim group in Cochise County, Arizona. Mr. Best selected me because of my familiarization with the prospect, which I originally generated in 1981 for Energy Reserves Group.

GEOLOGIST CERTIFICATE

I, Richard M. Renn, a Certified Professional Geologist of Albuquerque, New Mexico, do hereby state:

1. I am a consulting Geologist. I graduated with honors from California State University of Pennsylvania in 1974 with a B.S. in geology.
2. My address is 10817 Cielito Lindo, Albuquerque, NM, 87111.
3. This report was prepared at the request of Crest Resources.
4. I have practiced mineral exploration geology for the past seven years.
5. Although a visit to the property was not made at the time of this report, I have previously visited the property on several occasions.
6. I have no direct or indirect interest in the Sunday claims or Crest Resources.
7. I am a member in good standing of the American Institute of Professional Geologist and hold the title of Certified Professional Geologist and Certification Number 6229.

Dated this 28th day of February, 1985, Albuquerque, New Mexico

Richard M. Renn


Certified Professional Geologist
#6229